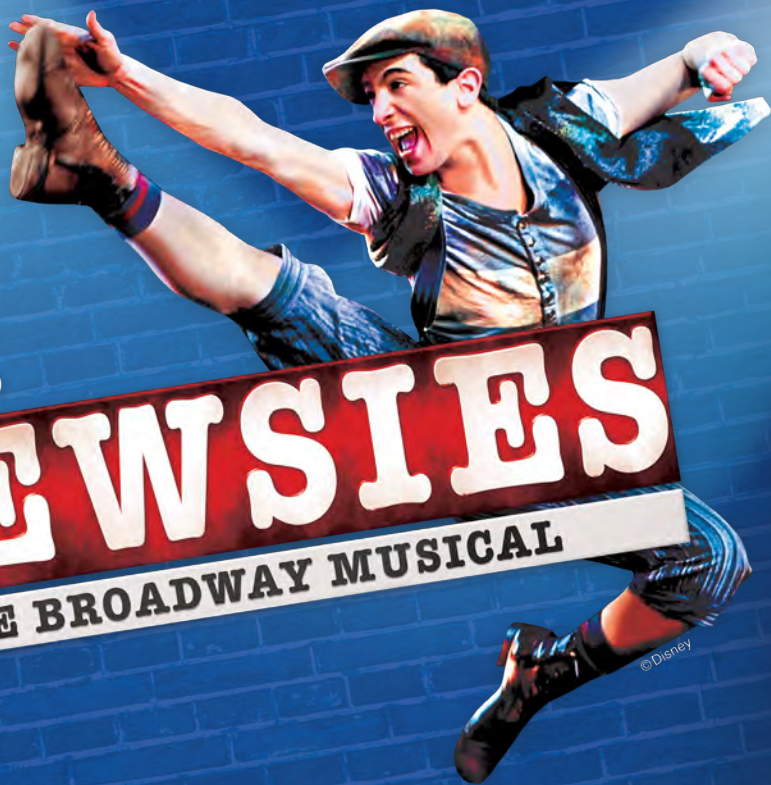



“Stop the Presses
and Seize the Day!”



Disney
NEWSIES
THE BROADWAY MUSICAL

AUG. 25 - SEPT. 11
at PATCHOGUE THEATRE

THE *Gateway*



**Your body
has 11
systems.
Our system
treats yours.**

Your body's 11 systems need to work in harmony to keep you healthy. That's why the Stony Brook Medicine healthcare system works in harmony too. With four hospitals, 1,500 providers at over 200 locations and telehealth services, we bring world-class care closer to you.

**Call (631) 444-4000 to make an appointment
or visit stonybrookmedicine.edu/locations to learn more.**



Stony Brook Medicine



PAINTERS'
Restaurant

Join us for
BRUNCH LUNCH DINNER

.....

Serving Brunch Saturday & Sunday
11am - 3pm

.....

FOR CATERED EVENTS
CALL OUR CATERING DIRECTOR
ZACH 631•923•8860

2 MILES EAST OF GATEWAY PLAYHOUSE
416 SOUTH COUNTRY RD. BROOKHAVEN, NY 11719
631-803-8593

DISCOVER THE FINEST IN SENIOR LIVING



The Bristol Assisted Living has been serving seniors and their families in the tri-state area since 2000, offering independent and assisted living, as well as state-of-the-art memory care programs. Discover a vibrant community, countless social events with new friends, and a luxurious lifestyle that you will only find at The Bristol.

SCHEDULE YOUR VISIT TODAY!

HOLTSVILLE
631-828-3600

The
Bristol
ASSISTED LIVING

SAYVILLE
631-563-1160

For a list of all locations in the tri-state area, visit: **THEBRISTAL.COM**



AN ENGEL BURMAN COMMUNITY

Licensed by the State Department of Health. Eligible for Most Long Term Care Policies. Equal Housing Opportunity.



Ready for the Right Move.

Ready. Set. Joe's®

St. Joseph's College offers academic programs developed by top industry leaders to prepare today's students to take center stage as tomorrow's leaders.

FIND OUT MORE

sjcny.edu

631.687.4500

St. Joseph's
College
NEW YORK



LONG ISLAND • BROOKLYN • ONLINE

AVINO'S



ITALIAN TABLE



NEIGHBORHOOD ITALIAN REDEFINED

PASTA | SEAFOOD | STEAK

OPEN DAILY FOR LUNCH & DINNER
SUNDAY BRUNCH

631-803-6416

108 SOUTH COUNTRY ROAD, BELLPORT VILLAGE
AVINOSITALIANTABLE.COM



LOBSTERFEST, EVERY MONDAY
SERVING BELLPORT SINCE 1985

Now there are 4 ways to “Listen to Lawrence” Davidow explain Elder Law, Special Needs and Estate Planning.

1



WATCH the
Listen to Lawrence
seminar in its entirety
on our website.

2



LISTEN to the *Listen to Lawrence* Podcast series, to find out the answers to commonly asked questions. Find it on our website or wherever you get your podcasts.

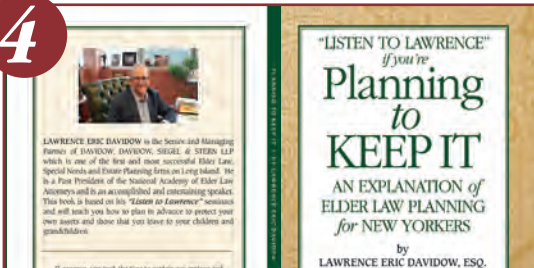
3



The Listen to Lawrence Letter

LEARN from the
Listen to Lawrence
Letters that are released
twice a week – sign up at
info@davidowlaw.com to
receive them in
your inbox.

4



READ
the *Listen to Lawrence*
Book: *Planning to Keep It*
now available
on Amazon.



DAVIDOW, DAVIDOW, SIEGEL & STERN, LLP

Long Island's Elder Law, Special Needs and Estate Planning Firm

1050 Old Nichols Road - Suite 100, Islandia, New York 11749 | Tel. (631) 234-3030

www.davidowlaw.com Additional office located in Mattituck

THE Gateway

Welcome back the theater!

In the 16 months since our stages were shuttered, Gateway has kept busy and active. Our school for the performing arts was in mid-session when the shutdown occurred, and after finishing with virtual classes, we offered a full schedule of acting and musical theater classes in summer 2020, held outdoors in three large tents. In addition, our popup cinema opened as "The Gateway Drive-In" where we offered over 100 movie titles including recent releases and all-time classics. In October we pioneered a drive-thru Haunted House at Southaven Park, concurrent with Brigands Run, an outdoor walk-thru haunted attraction here in Bellport. Then on New Year's Eve, we presented The Rat Pack is back - a live performance in Las Vegas, streamed exclusively to our 40' outdoor screen.

While social distancing and limited occupancy was mandated in June, we launched an outstanding production of A Chorus Line, featuring some of the top talent from Gateway's school for the performing Arts - and then as restrictions were being lifted, a powerful production of Songs for A New World. What an appropriate and exciting title as we looked forward to a bright tomorrow. It's was a show about hopes, dreams and aspirations - echoing some of the feelings and emotions we continue to encounter as we navigate through these difficult times. The power of the show was apparent as the final note echoed throughout the theater...

As the season moves forward, we will be making careful choices and decisions. As I am writing this, we are admitting only fully vaccinated patrons. The guidance we have received to date says this is the most responsible way to keep everyone safe in and around the theater. Thank you for being with us today, and please continue to help by spreading the word to your friends and associates.

Coming up after Newsies, the shows step aside to make way for Gateway's Haunted Playhouse - on site in Bellport and also back at Southaven Park during the month of October. After that, the musical productions for 2020 will finish out with A Gentleman's Guide to Love and Murder in November, and A Holiday Spectacular on Ice in December.

Thank you again for your patronage. As always, I appreciate your support

Sincerely



Paul Allan
The Gateway
Executive Artistic Director



FULLY VACCINATED AUDIENCE



Presents

NEWSIES

Music by **ALAN MENKEN** Lyrics by **JACK FELDMAN** Book by **HARVEY FIERSTEIN**

Based on the Disney film written by Bob Tzudiker and Noni White
Originally Produced on Broadway by Disney Theatrical Productions

Orchestrations by Danny Troob
Incidental Music and Vocal Arrangements by Michael Kosarin
Dance Arrangements by Mark Hummel

Starring
ALEX PRAKKEN MOLLY RUSHING

The Newsies
**ROREY CHAVARRIA ANTHONY DASILVA MAURICE DAWKINS
STEVEN ETIENNE JOSHUA KEEN NOAH LENTINI DARIO NATARELLI
MATTHEW SPARKS JONATHAN REYES RYAN RODIÑO BB STONE**

Featuring
**STEVE BRADY DAVID ENGEL LOGAN MARKS
ANDREW STEVENS PURDY AURELIA WILLIAMS**

With
**MAGGIE BERGMAN MIKE D'AMICO DAVID LAFLE TIMOTHY LEE
BRENDYN J. MOLNAR STEVEN ISAAC RICE BRIAN C. VEITH
MARK WOODARD TIM WEBB**

Executive Artistic Director
PAUL ALLAN

Production Manager
BRIAN LOESCH

Director of Business Operations
JEFF BELLANTE

Associate Artistic/
Casting Director
MICHAEL BAKER

Sound Designer
DON HANNA

Production Stage Manager
JAMES O. HANSEN

Director of Development
SCOT ALLAN

Projection Design
INFANTE MEDIA

Props Designer
BRITTANY LOESCH

Lighting Designer
DOUG HARRY

Music Director
ANDREW HAILE AUSTIN

Choreographed by
CHAZ WOLCOTT

Based on the original Broadway choreography by Christopher Gattelli

Directed by
LARRY RABEN

Disney's Newsies is presented through special arrangement with Music Theatre International (MTI).
All authorized performance materials are also supplied by MTI. 423 West 55th Street, New York, NY 10019.
Phone: 212-541-4684 Fax: 212-397-4684 www.MTIshows.com

Costumes for this production of Newsies Provided By Costume World
Set for this production of Newsies Provided By Front Row Theatrical Rental

CAST OF CHARACTERS

(In Order of Appearance)

Jack Kelly	ALEX PRAKKEN*
Crutchie	ANDREW STEVENS PURDY
Race	RYAN RODIÑO*
Albert	ANTHONY DASILVA
Specs	MATTHEW SPARKS
Henry	DARIO NATARELLI*
Finch	STEVEN ETIENNE*
Elmer	MAURICE DAWKINS*
Romeo	NOAH LENTINI*
Mush	JOSHUA KEEN
Katherine	MOLLY RUSHING*
Darcy	ROREY CHAVARRIA
Nuns	MAGGIE BERGMAN, BB STONE, AURELIA WILLIAMS*
Morris Delancey	TIM WEBB
Oscar Delancey	MIKE D'AMICO
Wiesel	MARK WOODARD
Davey	LOGAN MARKS
Les	DAVID LAFLER, BRENDYN MOLNAR
Joseph Pulitzer	DAVID ENGEL*
Seitz	TIMOTHY LEE
Bunsen	STEVEN RICE
Hannah	MAGGIE BERGMAN
Nunzio	STEVE BRADY*
Snyder	BRIAN C. VEITH
Medda Larkin	AURELIA WILLIAMS*
Stage Manager	STEVEN RICE
Mr. Jacobi	MARK WOODARD
Mayor	MARK WOODARD
Spot Conlon	MAURICE DAWKINS*
Bill	JOSHUA KEEN
Governor Roosevelt	STEVE BRADY*
Buttons	JONATHAN REYES
Tommy Boy	BB STONE

Production Stage Manager	JAMES O. HANSEN*
Assitant Stage Manager	ANNA K. RAINS*
Assistant Stage Manager	COURTNEY WIDGERSON
Dance Captain	RYAN RODIÑO*

UNDERSTUDIES

Katherine	MAGGIE BERGMAN
Spot, Davey	MIKE D'AMICO
Jack	LOGAN MARKS
Roosevelt, Nunzio	BRIAN C. VEITH
Darcy	TIM LEE
Crutchie	TIM WEBB
Joseph Pulitzer	MARK WOODARD



The Director/Choreographer is a member of the
Society of Stage Directors and Choreographers, Inc.,
an independent national labor union.



*Actors employed in this production are members of Actors' Equity Association,
the union of Professional Actors and Stage Managers in the United States.

MUSICAL NUMBERS

ACT I

Overture	Orchestra
Santa Fe [Prologue]	Jack, Crutchie
Carrying the Banner	Jack, Newsies, Nuns
The Bottom Line	Pulitzer, Seitz, Bunsen, Hannah
Carrying the Banner [Reprise]	Newsies
Chase	Orchestra
That's Rich	Medda
I Never Planned on You / Don't Come a-Knocking	Bowery Beauties, Jack
The World Will Know	Jack, Davey, Les, Crutchie, Newsies
The World Will Know [Reprise]	Jack, Davey, Les, Newsies
Watch What Happens	Katherine
Seize the Day	Davey, Jack, Les, Newsies
The Fight	Orchestra
Santa Fe	Jack

ACT II

Entr'acte	Orchestra
King of New York	Davey, Katherine, Les, Newsies
Letter from the Refuge	Crutchie
Watch What Happens [Reprise]	Davey, Jack, Katherine, Les
The Bottom Line [Reprise]	Pulitzer, Seitz, Bunsen
Brooklyn's Here	Spot, Newsies
Something to Believe In	Katherine, Jack
Seize the Day [Reprise]	Newsies
Once and for All	Jack, Davey, Katherine, Newsies
Seize the Day [Reprise 2]	Newsies
Finale Ultimo [Part 1]	Company
Finale Ultimo [Part 2]	Company

THE ORCHESTRA

Music Director/Keyboard 1	ANDREW HAILE AUSTIN
Keyboard 2	HOSUN MOON
Guitar	RAY SABATELLO
Bass	RUSS BROWN
Woodwinds	MICHAEL KENDROT
Drums/Percussion	ANDREW WARREN
Trumpet	JOSHUA GANCI
Trombone	JONATHAN DOWD



The Musicians employed in this production are members
of the American Federation of Musicians.

WARNING: The photographing or sound recording of any performance is strictly prohibited.

FIRE NOTICE: The exit indicated by a red light and sign nearest to the seat you occupy, is the shortest route to the outside. In the event of fire or other emergency, please do NOT run. WALK to that Exit. However, under normal circumstances, when leaving the Theatre, use the center rear exits. SMOKING is prohibited in the BUILDING, as required by the Suffolk County NO SMOKING Ordinance. Smoking in any area designated "No Smoking" renders the offenders subject to a fine, or imprisonment, or both.



**Yes! WE'RE
OPEN**



IT'S IN THE DETAILS

**EXPERT AUTO
COLLISION REPAIRS**

ALL INSURANCE ACCEPTED



1791 MONTAUK HIGHWAY
BELLPORT, NY 11713

286-2116



THE BELLPORT

Steps away from the Gateway Playhouse



New York Times Review

159 South Country Road, Bellport, New York 11713
(631) 286-7550 | www.bellport.com/thebellport



www.papanickspizzeria.com

Home of the Crispy Crust • Daily Specials

631-286-6400

117C South Country Road | Bellport Village

TOLA.

@TOLANEWYORK
TOLANEWYORK.COM

A SMALL BOUTIQUE WITH A BIG TIME VIBE

HARBOR WALK . FIRE ISLAND PINES
MAIN STREET . BELLPORT VILLAGE
MAIN STREET . WESTHAMPTON BEACH

TEMPERANCE HALL

164 S. Country Road
Bellport, New York 11713

The Historic Inn of Bellport Village

bellporthotel.com
bellporthotel@gmail.com
631-286-5654
@temperancehallbellport





SAVE THE DATE

BELLPORT DAY / SATURDAY JULY 31

AUGUST / Saturday 14th / live music
Scavenger Hunt / Sidewalk Sale

SEPTEMBER / September 4th and 5th
Labor Day weekend Sidewalk Sale

OCTOBER / Car Show, Sunday October 3rd



MVPAUTOMOTIVE
Service Center

152 SOUTH COUNTRY RD, BELLPORT VILLAGE, NY
631.776.1010

www.mvpautomotive.com

Complete Auto Care for Foreign & Domestic Vehicles



In the heart of Bellport Village

160 S. Country Rd., Bellport
631.677.1615 Bellportinn.com

Bellport Arts
& FRAMING STUDIO

@BellportFramer

DESIGN • PRINT • FRAME
CARDS + GIFTS



GALLERY, BOOKSTORE & BOUTIQUE

Featuring ever-changing inventory
curated by friends and family.

.....

139 South Country Road, Bellport, NY 11713
(631) 803-2190 • thestorefrontbellport.com



Is Your News Legit... or Totally Unfit?

*Trusted, Award Winning
Local News Since 1871*

THE LONG ISLAND
Advance

print • online • mobile- Serving Southern Brookhaven Town

PATCHOGUE VILLAGE • BELLPORT VILLAGE

*Mention this ad and receive
\$5.00 off a new subscription*

20 Medford Avenue, Patchogue

631-475-1000

longislandadvance.net



We're in Your Corner

People today can spend nearly half their lives over the age of 50. That's a lot of living. So, it helps to have a wise friend and fierce defender like AARP Long Island in your community so your money, health and happiness live as long as you do.

AARP offers tools, resources and local expertise to help you achieve your goals and stay connected.



Scan the QR
code or visit
aarp.org/nearyou
to learn more.

 /AARPLongIsland  @AARPLongIsland





STAGE DOOR

SCHOOL OF DANCE

LET'S DANCE

All ages. All abilities. All welcome.

2021-2022 SESSION NOW ENROLLING

CLASSES BEGIN SEPTEMBER 9, 2021

stagedoordancer.com

127 SUNRISE HWY. PATCHOGUE, NY

(631) 654-8858 • info@stagedoordancer.com

READY...SET...GROW

Ask About Our New Business Start-up Packages!



Logo Design • Website Design • Digital Advertising
Direct Mail Announcements • Brochures • Business Cards



www.searlesgraphics.com



www.searles.media

631-345-2202

We "Set the Stage" for civilized travel to New England!

• ROOM FOR OVER
90 VEHICLES
EACH CROSSING

• ON BOARD
FOOD SERVICE &
STEAMBOAT LOUNGE

• NUMEROUS
CROSSINGS DAILY

• ENCLOSED
PASSENGER CABIN

BRIDGEPORT & PORT JEFFERSON FERRY

www.88844ferry.com 1-888-443-3779



THE "NO FEE"

State-Of-The-Art Facility • Enclosed Service Drive
ALL TO SERVE



SAYVILLE FORD

**FAMILY OWNED
& OPERATED**

SINCE 1957

**LOW PRICE GUARANTEE • SALES STAFF WITH OVER 10 YEARS OF EXPERIENCE
SERVICE OPEN 6 DAYS A WEEK (MONDAY - FRIDAY)
DRIVE-IN RECEPTION AREA (NO APPOINTMENTS)**

**\$250
OFF**

**Any New or Pre-Owned
Vehicle Purchase or Lease!***

*Cannot be combined with any other offers. Coupon must be presented when order is written. Valid only at Sayville Ford.

Coupon Expires: 10/31/21

5686 SUNRISE HWY EXIT 50, SAYVILLE, NY



"BEST" DEALER!

• Free Pledge Plus Program w/ Every Purchase
YOU BETTER!



**OVER 150 YEARS OF COMBINED EXPERIENCE • FLEXIBLE FINANCING OPTIONS
(7 DAYS A WEEK) • NIGHT SERVICE HOURS TIL 1AM (MONDAY-FRIDAY)
(APPOINTMENT NECESSARY) • FACTORY CERTIFIED AND TRAINED TECHNICIANS**

**\$19.95
OIL CHANGE
SPECIAL**

*Up to 5 quarts, additional extra. Full Synthetic or Diesel oil extra. Coupon must be presented when service order is written. Cannot be combined with any other offers or previous purchases. Cost does not include taxes, shop supplies, and hazardous waste fees, if applicable. Valid only at Sayville Ford.

Coupon Expires: 10/31/21

**FREE
WHEEL ALIGNMENT
CHECK**

*Coupon must be presented when service order is written. Cannot be combined with any other offers or previous purchases. Cost does not include taxes, shop supplies, and hazardous waste fees, if applicable. Valid only at Sayville Ford.

Coupon Expires: 10/31/21

NY • SAYVILLEFORD.COM • 631.573.0543

WHO'S WHO



STEVE BRADY (*Nunzio / Guard / Policeman / Roosevelt / Ensemble*)

From Hercule Poirot to Horace Vandergelder and Scrooge, Steve has prowled the grounds of the Gateway for many years. He's also appeared on Broadway, Off-Broadway, in National

and International Tours, and at major and not so major regional theatres. It's great to be back!



MAGGIE BERGMAN (*Nun / Hannah / Bowery Beauties / Splasher, u/s Katherine*) (she/her) is thrilled to be making her Gateway debut! She recently graduated from Boston Conservatory with a BFA in Musical Theatre. Past regional credits include

A Chorus Line (Judy) at Interlakes Theatre, *Singin' in the Rain* and *Saturday Night Fever* at Theatre by the Sea. Many thanks to Larry, Chaz, Michael, Paul, and the entire Gateway team! All my love to family, friends, and mentors who make it all possible.

LINK '21 @maggie_rose_b



ROREY CHAVARRIA (*Jo Jo / Darcy*) has recently been on tour with the LA Dance Magic Company. He's featured in the music video "*Sit Me Back Down*" by Prince of Eden. Industrials include Amazon and KAR dance videos. On stage he's performed

at the Chapman University Choir Festival and has played Jafar in *Aladdin* and Danny in *Grease*. When home, Rorey is a gymnastics coach for several dance companies in the LA area.



MIKE D'AMICO (*Oscar Delancey, u/s Davey, u/s Spot*) is so grateful to return to Gateway having been seen previously in *Rent* and *A Chorus Line* (Mike). Regional credits: *The Man of La Mancha* (Engeman), *Happy Days* (Westchester Broadway), *Sister Act*

(Palace Theatre/Derby Dinner), *Saturday Night Fever* (Beef & Boards). Two years as a lead vocalist with Disney Cruise Lines (Quasimodo/Aladdin). Thanks to my family, the *Newsies* team, and everyone at ATB Talent. @mikedamiconyc



ANTHONY DASILVA (*Albert*) is absolutely thrilled to be making his Gateway debut with this incredible cast and crew. Anthony just graduated in June from Montclair State University with a B.F.A. in Musical Theatre.

LINK. @anththology



MAURICE DAWKINS (*Elmer / Spot*)

is a contemporary ballet dancer and musical theatre performer, born and based in NYC. His theatre credits include the *CATS* Broadway-Revival Tour, and regional and ship productions of *Newsies*, *CATS*,

Mamma Mia, and *South Pacific*. He's an alumni of Sarah Lawrence College and LaGuardia High School for the Arts, and trained at Manhattan Youth Ballet, LaGuardia, and with Rosie's Theatre Kids, where he began his journey in the arts. Maurice is so honored to perform in *Newsies* at The Gateway with such a wonderful team of artists!



DAVID ENGEL (*Joseph Pulitzer*) On Broadway Mr. Engel appeared in *La Cage aux Folles*, *Seussical: The Musical*, *Putting it Together* with Carol Burnett and in the original New York production of *Forever Plaid*, and again in *Plaid Tidings* and *Forever*

Plaid: The Movie. Gateway audiences may remember Mr. Engel as one of the "Dads" in *Mamma Mia!*, Gomez in *The Addams Family*, and Monsieur Bouc in *Murder on the Orient Express*. Feeling grateful to be back on the Gateway boards!



STEVEN ETIENNE (*Finch*) recently made the move to Atlanta, GA, but is grateful to be back on the New York stage! Some favorite theatre credits of his include *After Midnight* (NCL) and *The Scottsboro Boys* (The REP Pittsburgh Playhouse). On camera,

he's worked with Tyler Perry Studios, Todrick Hall, and several indie shorts in the film festival circuit! stevenetienne.com IG: @stevenatn



JOSHUA KEEN (*Mush / Bill*) is originally from Erwin, NC - now based in NYC. BFA Syracuse Univ. Class of 2020. Previous credits include: *The Sound of Music* (Rolf), *An American in Paris*, *A Chorus Line*, *Chicago* - Music Theatre Wichita; *Elf the*

Musical, *Beauty and the Beast*, *Home for the Holidays* - Syracuse Stage; *42nd Street* - Bucks County Playhouse; *Spamalot*, *Grease*, *The Little Mermaid* - NC Theatre. Joshua would like to thank his family, friends, and Chaz for all of their support.

@joshuakeen



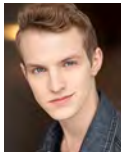
DAVID LAFLER (*Les, select performances*) is thrilled to join the cast of Gateway's production of *Disney's Newsies*. David's past credits include the role of Peter in *A Christmas Carol* and the Children's Choir in *Joseph* at T3, as well as

ensemble roles in Gateway's Children's Theatre productions of *Mary Poppins, Jr.*, *Aladdin, Jr.*, and *The Wizard of Oz*. David thanks his voice, acting, and dance teachers for giving him the tools that have allowed him to take the stage with this incredible cast. Thanks also to his parents, siblings, and grandparents for their love & support.



TIMOTHY LEE (*Seitz / Ensemble, u/s Darcy*) is ecstatic to make his Gateway Playhouse debut! Credits include, Nat'l tour *Rudolph the Red-Nosed Reindeer* (Swing), *Shrek* (Wizard), *Mamma Mia!* (Ensemble), *Evita* (Ensemble), *Children of Eden*

(Japheth). He is currently pursuing his MM in Vocal Performance at NYU. He earned his Musical Theatre BFA degree at CSUF. He wants to thank God and his family for always inspiring him to follow his heart. Special thanks to the FSE Talent family. IG: tim_haechanlee



NOAH LENTINI (*Romeo*) is thrilled to be making his Gateway Playhouse debut! Other regional credits include: *Beauty and the Beast*, *Elf The Musical*, *La Cage Aux Folles*, *The Wizard of Oz*. Film credits include *Unrequited*, *The Field Trip* and the upcoming Netflix movie, *Tick... Tick... BOOM!*, directed by Lin-Manuel Miranda. BFA Syracuse University. Huge thank you to Chaz, CESD, and mom and dad! @noahlentini



LOGAN MARKS (*Davey, u/s Jack*) Gateway debut!! Logan was last seen on stage as Mark Cohen in the *RENT 20th Anniversary Tour* and is thrilled to be playing Davey in his first show back since the COVID shutdown!

Other previous roles include Jack in *Newsies*, Seymour in *Little Shop*, and Emmett in *Legally Blonde*. Much love and thanks to his family, friends, TPG, and everyone else who helped get him here. As always, for my parents. BFA WCU MT. @loganalexmarks



BRENDYN J. MOLNAR (*Les, select performances*) is ecstatic to be back at the Patchogue Theatre. This is his third main stage production with The Gateway Playhouse. Other roles include Kurt in the *Sound of Music*, and ensemble in *Elf*. He has been

in many children's productions through Gateway and WHBPAC. He enjoys all aspects of performing, and looks forward to honing his craft. He would like to thank his friends, family, cast and everyone at the Gateway for their love and support.



DARIO NATARELLI (*Henry*) is honored to be joining the cast of *Newsies!* Some of his credits include: *Tappin' Thru Life* (Off-Bway), *Radio City Christmas Spectacular* (National Tour), *Vail Dance Festival* (Choreographer/

Performer/Asst. Choreographer), *Cabaret* (Emcee), national commercials, and more. He was most recently a Dance Captain for Justin Peck for several Broadway Labs. Thank you to family, friends, and mentors for the support! Respect the dance; go in rhythm. IG: @dario_natarelli



ALEX PRAKKEN (*Jack Kelly*) returns to *Newsies* after playing Oscar Delancey on the First National Tour, and Jack at Paramount, La Mirada, and White Plains Theatres. Favorite Regional: *Les Miserables* (Marius, MUNY), *1776* (Courier, MUNY), *Grease* (Roger,

PCLO), *Jesus Christ Superstar* (Jesus, CRT), *South Pacific* (Cable, Olney Theatre), *Next To Normal* (Gabe, Farmers Alley). Concerts: *102 Years of Muny Magic* (MUNY), *Gutenberg! The Musical!* (Green Room 42). Training: University of Michigan, London Academy of Dramatic Arts. @alprakken



ANDREW STEVENS PURDY (*Crutchie*) is incredibly grateful to be making his Gateway debut in *Newsies!* THEATRE: *Hair* (Woof) and *The Producers* (Carmen Ghia) at Forestburgh Playhouse, *Cats* (Mungojerrie) at Interlakes Theatre, *Crazy for You*

(Mingo) at Reagle Music Theatre, and *Hello, Dolly!* (Barnaby) at Elon University. FILM: *Unidentified Objects* and the upcoming rom-com *Meet Cute*, starring Pete Davidson and Kaley Cuoco. Proud alum of Elon Music Theatre and Walnut Hill School for the Arts. Huge love and gratitude to DGRW, MT20, and most of all, my family! For more info: www.andrewstevenspurdy.com // IG: @feelinpurdygood



JONATHAN REYES (*Buttons*) is beyond ecstatic to be making his regional theatre debut with the Gateway Playhouse! Born and raised in San Antonio, Texas, Jonathan attended The North East School of the Arts and studied at Texas State University

where he majored in Musical Theatre. Jonathan thanks his family, teachers, Chaz Wolcott, and everyone at the Gateway Playhouse for giving him this wonderful opportunity!

Continued on next page

WHO'S WHO



STEVEN ISAAC RICE (*Bunsen / Stage Manager / Ensemble*) is from Atlanta, GA and is a graduate of Samford University in Birmingham, AL (BFA in Musical Theatre). He has traveled the country with touring shows and performed at many regional theaters.

His favorite credit is portraying Jackie Robinson in the national tour of *Everybody's Hero*. He currently resides in NYC and feels blessed and honored to be performing at the Gateway Theater! Steven dedicates every performance to his family, who have always been there supporting him in everything he does. "To love another person is to see the Face of God." —*Les Misérables*



RYAN RODIÑO (*Race, Dance Captain*) is thrilled to be back home in Bellport. He was last seen at Gateway in their 2017 production of *On The Town*. Ryan has traveled the world with *A Chorus Line* on the recent National Tour, Japan Tour, in China's

original company, and worked closely with Antonio Banderas prior to his current production in Spain. NYC: *Christmas on Broadway*. Regional: The REV/ Merry-Go-Round Playhouse, Ogunquit Playhouse, Arts Center of Coastal Carolina, Engeman Theatre, Theatre By The Sea, Argyle Theatre, and many shows here at Gateway. TV: *Dickinson*. Montclair State University and Jimmy Awards alum. Thanks to Larry, Chaz and team! @ryrodino



MOLLY RUSHING (*Katherine*) is thrilled to return to the Gateway stage after performing the title role in *Cinderella* in 2015. She has performed lead roles at David Geffen Hall and with Disney Cruise Line and performed in the original Broadway cast of *Anastasia*

the Musical, understudying the role of Anya. It is nothing but a gift to share the magic of live theatre again with the wonderful people of Gateway, the *Newsies* team, and all of you.



BB STONE (*Tommy Boy / Bowery Beauties*) is thrilled to be making her Gateway Theatre debut in *Newsies*! From Greensboro, NC, BB has trained at Oklahoma City University and the Joffrey Ballet School's Jazz & Contemporary Trainee Program.

Recent Credits include *All Shook Up*, *South Pacific*, *Mamma Mia!* (Flat Rock Playhouse) and *The Marvelous Mrs. Maisel*. So much thanks to The Gateway Theatre and Chaz for this opportunity. Endless gratitude to her family, friends and mentors. @bbstone



MATTHEW SPARKS (*Specs*) is thrilled to make his NY and *Newsies* debut at The Gateway! Previous credits include flying to Neverland in the closing cast of *One Man's Dream II* at Tokyo Disneyland and dancing at sea with

Royal Caribbean Productions. He is a Texas native and proud dance graduate of Oklahoma City University. Many thanks to Chaz and everyone at The Gateway, his family, friends, fellow OCU stars and professors, & his Tokyo family! Instagram: @matthewasparks



BRIAN C. VEITH (*Snyder / Ensemble, u/s Roosevelt/Nunzio*) is so pleased to be back home at The Gateway for his 9th show, last appearing in *Murder On The Orient Express*. Favorite Shows: *Beauty And The Beast*, *Kinky Boots*,

Little Women, *Phantom*. Other favorite theatres: The Engeman Theatre, Alabama Shakespeare Festival, and Moonlight Amphitheatre. Upcoming: *In Emily's Words* at Emerging Artists Theatre Company. Marymount Manhattan alumnus. FB/Instagram @briancveith. Thank you Larry, Chaz, Andrew and the entire cast, crew and company here at The Gateway. For Xavier. Micah 6:8.



TIM WEBB (*Morris DeLancey, u/s Crutchie*) is so excited to be back on the stage in his first production post college! Tim graduated with a BFA in Musical Theatre from Pace University in 2020. Some of his favorite credits

there include: *Amélie* (Fluffy/Joseph), *Pete(her) Pan* (Lost Boy- U/S Peter), and *Sunday in the Park with George* (Mr.-U/S George). Tim would like to thank his whole family for their support and the whole team at BWA for believing in him!



AURELIA WILLIAMS (*Medda*): B'way: *Once On This Island* (Tony Award), *In Transit*. Off B'way: *First Date: The Virtual Broadway Musical*, *Sistas the Musical*, *They Wrote That*, *Ragtime* (Ellis Island). Nat'l Tours: *All Shook Up*, *Ain't Misbehavin'*. Regional: *Rock of Ages* (Justice), *Dreamgirls* (Effie White), *Once On This Island* (Asaka), *Hairspray* (Motormouth Maybelle), *Kiss Me Kate* (Hattie), *Best Little Whorehouse in Texas* (Jewel). TV/ Film: *Fosse/Verdon*, *Holiday For Heroes* (Hallmark), *Sopranos*. Aurelia would like to thank her family for their love and endless support.



MARK WOODARD (*Mr. Jacobi / Wiesel / Policeman / Mayor / Ensemble, u/s Joseph Pulitzer*) is thrilled to be making his Gateway debut, fresh from The REV Theatre's production of *42nd Street*! This fall he'll be appearing in The Palace Theatre's productions

of *Mamma Mia* and *A Christmas Carol*. Other credits include: Ogunquit Playhouse (*Oklahoma!*), Pittsburgh CLO (*The Producers*), Palace Theatre (*Spamalot*), Resident Theatre Co (*Dirty Rotten Scoundrels*), Arizona Broadway Theatre (*The Addams Family, La Cage Aux Folles*).

LARRY RABEN (*Director*) This marks his 9th show for The Gateway: *Murder On The Orient Express, Kinky Boots, Cabaret, Mamma Mia!*, *Nice Work If You Can Get It* (IRNE nomination), *R & H's Cinderella, The Producers, Sunset Blvd* and as an actor *Sugar* (Jerry Daphne). He directed Tony winner Joe DiPietro's *Falling For Eve* Off-Broadway (York Theatre). Recents: *School Of Rock* (currently running at Tuacahn Amphitheatre), *Jersey Boys* (Phoenix Theatre Company), *Buyer & Cellar* (Laguna Playhouse), *Catch Me If You Can* (Musical Theatre West), *Tru* (CSW), and *Titanic* (Moonlight). Ever grateful to Paul and the Gateway family!

CHAZ WOLCOTT (*Choreographer*) is delighted to return to The Gateway, this time as choreographer. Dir/Chor credits include: Broadway's *Red Bucket Follies* (New Amsterdam Theatre), *Broadway Backwards* (Al Hirschfeld Theatre) and *Gypsy of the Year*; Regional: *Priscilla Queen of the Desert, Me and My Girl, Altar Boyz, Crazy For You, Mary Poppins, Newsies* (5x), *Cats, Bright Star*, and *La Cage aux Folles*. Special thank you to Chris for trusting me with this inspiring show, and to the incredible ragamuffins up on that stage. Thanks to Paul, Larry, James, Michael, Scot, Andrew, and the Gateway team! www.chazwolcott.com / @dancinchaz.

ANDREW HAILE AUSTIN (*Music Director*) is a composer, pianist, and conductor currently living in Brooklyn. After graduating from college, he moved to NYC where he worked at several arts schools while free-lancing as a conductor for many theatres and universities in the New York area. Since that time, Andrew has music directed almost 100 productions of operas and musicals across the country most recently at Virginia Music Theatre, John Engeman Theatre, Virginia Stage Company, and Theatre Under the Stars. As a teacher, he has taught both high school and college-age students working at several schools in NYC including the American Musical and Dramatic Academy (AMDA) and ten years at the Governor's School for the Arts

in Norfolk, VA. As a composer, his works have been presented up and down the East Coast. In 2016, he was named composer-in-residence for the Tidewater Opera Initiative who presented his opera, *The Snow Maiden of Appalachia*. Andrew holds a Doctorate in composition from the Peabody Institute of Johns Hopkins University where he studied with composer Kevin Puts. This is his 15th production for Gateway, most recently music directing *On Your Feet, Kinky Boots*, and *Elf* during the 2019 season. www.andrewhaileAustin.com

JAMES O. HANSEN (*Production Stage Manager*) is thrilled to return to Gateway! Recent credits include: *Million Dollar Quartet* (Tuacahn); *Murder on the Orient Express* (Gateway), *Elf: The Musical* (Gateway), *Noises Off, Once, The Importance of Being Earnest* at The Cape Playhouse, *On Your Feet* (Regional Premiere-Gateway), *Beauty and the Beast* (Gateway & TBTS), *Flashdance: The Musical* (Regional Premiere-Gateway). James earned a Bachelor's Degree in Arts Management from Dean College. Special thanks to his family, Carina, and Osten for their love and support!

ANNA K RAINS (*Assistant Stage Manager*) Touring: *Blue Man Group, The Phantom of the Opera, An American in Paris*. Las Vegas: *Blue Man Group*. Regional: Tuacahn, North Carolina Theatre, Juilliard, Virginia Rep. Proud NC State University alum. Love and thanks to Mom, Dad, and the dogs at home.

DON HANNA (*Sound Designer*) is happy to be back home at The Gateway, where he started 15 years ago, for Disney's *Newsies*. Don is a freelance sound designer and engineer whose work can be seen (well, heard) in national tours, regional theaters, and concert productions alike. Touring Highlights: *An American In Paris* (Sound Design, Big League Productions), *The Wizard of Oz National/International Tour* (Sound Design, Apex Touring) *Pippin National Tour* (Associate Sound Design/Head Audio, Apex Touring), *Fame The Musical* (Sound Design). Regional Highlights: Regional Premier of *Rock of Ages* (Sound Design, Gateway Playhouse), the world premier of *Heartbreak Hotel* (Sound Design, Ogunquit Playhouse), *Mel Brook's Young Frankenstein* (Sound Design, North Shore Music Theatre, Gateway Playhouse, Ogunquit Playhouse), *In The Heights* (Sound Design, John W Engeman Theatre), among many more. A special thank you to my friends, family and Bethany for their continual love and support.

Patchogue Family Dental, PC

WHERE PATIENTS BECOME FAMILY



General Dentistry and
Cosmetic Dentistry
Orthodontics
Implants • Botox

2 LOCATIONS

East Quogue
631-653-5888

East Patchogue
631-475-1191

Please visit our website for complete services

phfamilydental.com

Confused by Medicare?

- Are you paying too much for your prescriptions?
- Are you turning 65 and still working?
- Are you getting everything you're entitled to?

Choosing a Medicare Advantage Plan, Medicare Supplement Plan or Part D Drug Plan can be overwhelming.

**Imagine a stress-free
experience with
NO COST TO YOU!**



Cindy Goldsher Insurance

Senior Services Specialist, NYS Licensed Agent & Broker

CALL: 516-578-8330 **EMAIL: medicarepro65@gmail.com**

WEBSITE: cindyinsurance.com



Moments away from the majestic Hamptons beaches and Westhampton Beach Performing Arts Center, The Villa at Westhampton is an exclusive assisted living community.

Independence and Sophistication – A Place You Call Home

- 24 Hour Supervision • Case Management
- Medication Management
- Restaurant Style Dining & Country Kitchen
- Social & Recreational Activities • Housekeeping & Laundry Services
- Personal Care Assistance • Nursing Services
- Legacy Memory Care Suites • Short Term Stays Are Welcome



68 Old Country Road, Westhampton, NY 11977
631.240.8100 | Email us: info@hamptonsvilla.com | hamptonsvilla.com



Relax Before or After The Show — Full Bar & Menu

Closed Sunday

70 North Ocean Avenue • Patchogue • (631) 289-1900 • www.reeses1900pub.com

BROOKHAVEN

HEALTH CARE FACILITY



5-STAR REHAB & NURSING CARE

WE OFFER — Subacute & Outpatient Rehabilitation

5-Star Physical, Occupational
& Speech Therapies for:

Injuries & Fractures
Joint Replacements
Cardiac &
Pulmonary Issues
Stroke Recovery
Wound Healing
Neuromuscular
Diseases

Offering Real-Time

ADVANCED CARDIAC TELEMETRY MONITORING

Identifies Issues Earlier
Improves Patient Outcomes
Helps Avoid Unnecessary
Hospital Readmissions

631-447-8800

www.BrookhavenHealthCareFacility.com

PROUDLY AFFILIATED WITH
Long Island
Community Hospital



SOUTH OCEAN GRILL

FINE CASUAL DINING BY THE BAY

Patchogue's Hidden Gem

Executive Chef Hirbin and his staff look forward to serving you!!!

**SPECIALTY COCKTAILS, SANGRIA,
WINE & BEERS**

ARTISAN BREAD MADE ON PREMISES | MARKET SALADS
FRESH VEGETABLES | FRESHLY GROUND BURGERS
HAND SELECTED STEAKS AND FRESH FISH
HOUSE MADE DESSERT SELECTIONS

MONDAY – CLOSED

TUE. – THU. 11-9PM | FRI. & SAT. 11-10PM | SUN. 12-8PM

567 S. OCEAN AVE | PATCHOGUE, NY | 631-307-9999

WWW.SOUTHOCEANGRILL.COM



*The Bellport Teachers' Association supports our schools,
local community services and local businesses!*



Member of the Bellport Chamber of Commerce



Ruland
FUNERAL HOME, Inc.

*Proudly Supporting The Arts
That Enrich Our Lives*

475-0098

500 N. OCEAN AVE, PATCHOGUE NY 11772

 **LONG ISLAND
PRECAST**
SM
20 Stiriz Road, Brookhaven, New York 11719

www.li-precast.com

631-286-0240

Classes
offered
for ages
3 and up!



Come make her dreams a reality

Relevé Dance Centre

33B MONTAUK HIGHWAY, BLUE POINT, NY 11715

www.relevedance.com

Swezey

FUEL CO., INC. - EST. 1919

Suffolk's Largest Family Owned Energy Company

- Heating & Air Conditioning
- Automatic Oil Delivery Service
- 24-Hour Emergency Service
- Budget Plans that Pay You Interest
- Expert Installations of Boilers, Burners, Hot Water Heaters & Air Conditioning Equipment



475-0270

51 RIDER AVE., PATCHOGUE

**PRODUCE | GIFT SHOP
BAKERY | PLANTS**

**Eastport Manor Rd.
Eastport, NY 11941**

631-325-0539

www.OLISHFARMS.com



SINCE 1979

SIGNS

& ADVERTISING

WWW.JSIGNSINC.COM



THE GREATER PATCHOGUE CHAMBER OF COMMERCE

VISIT PATCHOGUE.COM

FOR INFORMATION ON ALL THINGS PATCHOGUE!

The Killer Musical
Comedy with
Outrageous Gusto!

A
GENTLEMAN'S
GUIDE
TO
LOVE & MURDER



NOV. 17 - DEC. 4
AT THE GATEWAY PLAYHOUSE



Tickets Available at TheGateway.org
631.286.1133

THE Gateway

Holiday SPECTACULAR On Ice



DEC. 17 - JAN. 1

AT PATCHOGUE THEATRE



Tickets Available at TheGateway.org
631.286.1133

PERFORMING ARTS CENTER OF SUFFOLK COUNTY

BOARD OF DIRECTORS

Chair	Ken Searles	Treasurer	Jim Martinsen
Vice-Chair	Terry Tuthill	Directors	Paul Allan, Diane Giattino, Ann Nowak
Secretary	Gale Edwards		

ADMINISTRATIVE

Executive Artistic Director	Paul Allan
Director of Business Operations	Jeff Bellante
HR/Payroll	Gale Edwards
Associate Artistic Director	Michael Baker
Director of Development /Public Relations	Scot Patrick Allan
Company Manager	Bethany Sortman
Accounts Payable/Bookkeeping	Janet Caponi
Casting Director	Michael Baker
Assistant Casting Director	Rachel Armitstead
Casting Assistant	Kaitlyn LaGrega
Production Photographer	Jeff Bellante
Assistant Company Manager	Adam Koob
COVID Compliance Officer	Annmarié Allan

NEWSIES STAFF

Director	Larry Raben
Choreographer	Chaz Wolcott
Music Director	Andrew Haile Austin
Lighting Designer	Doug Harry
Sound Designer	Don Hanna
Scenic Coordinator/Prop Designer	Brittany Loesch
Costume Coordinator	Janine Loesch
Associate Lighting Designer	Elizabeth Marquis Silva

EDUCATION

Education Director	Michael Baker
Interim Acting School Manager	Kaitlyn LaGrega
Conservatory Stage Manager	Courtney Wigderson
Teaching Staff	Ray Ebarb, Matt Karris, Kaitlyn LaGrega, Jessica Norland, Amy Woschnik
Accompanist	Hosun Moon, Anthony Vetere

BOX OFFICE

Box office Manager/ Group Sales	Laurie Cole
House Manager/Group sales	Joanne Tambasco
Assistant House Manager	Abby Beodeker
Box office staff	Laurie Cole, Joanne Tambasco Abigail Beodeker, Phyllis Kaye, Janet Caponi, Erin Michelitsch

PRODUCTION

Production Manager	Brian Loesch
Production Stage Manager	James O. Hanson
Technical Director	Kelvin Doo
Prop Supervisor	Brittany Loesch
Audio Engineer	Sam Silva
Sound Supervisor	Rob McGarrity
Electrics Supervisor	Riley Noble
Costume Shop Manager	Janine Loesch
Video Supervisor/ Electrics Shop Manager	William Milligan
Wig & Makeup Supervisor	Tatiana Urusow
Assistant Production Manager/ Rentals Manager	Tony Tambasco
Assistant Stage Managers	Anna Rains, Courtney Wigderson
Assistant Technical Director	John-Paul Baker
Wardrobe Supervisor	Brenna Wiist
Lighting Programmer	Elizabeth Marquis Silva
Scenic Charge	Tracie VanLaw
Sound Assistant	Kyra McNeil
Staff Electrician	Chelsea Strebe
Props Assistants	Nicholas Bernard, Rebecca Xhajanka, Isabella Campins
Costume/Wardrobe Staff	Cambree Bailey
Carpenters	Paige Bergen, Nicolis Hall, Lauren McAuliffe, Lou Perrotta
Electrics Apprentice	Gerry Guerrero

FACILITIES

Cleaning Staff	Jasper Bailey
House Staff	Joe Kraus, Ralph Bianco, Daniel Parr Aaron Legros, Jack Burkhardt, Megan Fawcett, Caitlin Fawcett, Matt Fama, Luke Allan
Grounds Maintenance	HTM Landscaping

Some props provided by John Shorter
at PROP RENTALS NY

Gateway Playhouse would like to thank our volunteer staff for their dedication and support. It is much appreciated.

Annette Reeve, Barbara Keup, Beatrice Marelli, Camille Brideson, Carmela Aiosa, Cecilia Beda, Celmira Pachon, Cheryl Becker, Connie Merced, Diane Lovizio, Diane Warren, Eileen Maida, Emma Miele, Harold Schiffman, Jim Ficker, Joseph Warren, Joyce Gambina, Judy Onorato, Kathy Pernice, Kristina Farmer, Linda Gaimaro, Linda Good, Linda Okolowich, Linda Randolph, Lorrie Clifford, Lou Giudice, Mary Lanier, Mary Lou Cohalan, Melissa Donovan-Foglia, Missy Atchue, Nancy Connolly, Olivia Schilling, Pat Ely, Pat Santalone, Pat Ficker, Pete Pernice, Robert Koenig, Sandy Reifel, Steven Schilling, Sue Greenleaf, Suzette Ciminelli, Theresa Gabriel, Tim Cole, Violet Bezler

IF YOU WOULD LIKE TO JOIN OUR VOLUNTEER STAFF CALL 631-286-0555

Be on Stage!

THE *Gateway*
SCHOOL FOR THE

PERFORMING

ARTS

LEARN, LAUGH, SHINE!

FUN CLASSES FOR ALL AGES

- NEW STUDENTS WELCOME • MAKE NEW FRIENDS
- GREAT AFTER SCHOOL ACTIVITIES WITH CLASSES FOR ALL AGES
- MULTI CLASS DISCOUNTS • WE FOLLOW COVID SAFETY PROTOCOL

TECHNIQUE • MUSICAL THEATRE • PRODUCTION

CLASSES ALL YEAR LONG



TO LEARN MORE EMAIL: ACTINGSCHOOL@THEGATEWAY.ORG OR CALL (631) 286-0555, EXT 5000

THEGATEWAY.ORG



GATEWAY'S HAUNTED PLAYHOUSE

RETURNING THIS FALL

NOW HIRING ACTORS AND/OR
CREW AND BUILDERS

PLEASE EMAIL CASTING@THEGATEWAY.ORG FOR INFORMATION

CONTRIBUTE TO THE FUTURE OF THE ARTS

We invite you to lend your support
and become a bigger part of our
performing arts family.

- ★ **STAR BILLING**
\$25,000 +
- ★ **LEADING PLAYER**
\$10,000 +
- ★ **PRINCIPAL ROLE**
\$5,000 +
- ★ **DIRECTOR'S CIRCLE**
\$2,500 +
- ★ **FRONT ROW VIP**
\$1,000 +
- ★ **BACKSTAGE PASS**
\$500 +
- ★ **CAST MEMBER**
\$250 +
- ★ **STAGE HAND**
\$100 +
- ★ **FAN CLUB**
\$50 +

GO TO THEGATEWAY.ORG AND CLICK
ON SUPPORT OR CALL (631) 286-7027
FOR MORE INFORMATION

*The Performing Arts Center of
Suffolk County is a 501(c)3 non-profit
organization – all donations are 100%
tax-deductible. Thank you for your
contribution to the future of the arts!*

To adjust the way your name is
listed here, please email
Scot@TheGateway.org
or call **631-286-7027**.

BOARD MEMBERS

Paul Allan
Gale Edwards
Diane Giattino
Jim Martinsen
Ann Nowak
Ken Searles
Terry Tuthill

STAR BILLING

Ravenal Curry
The Knapp Swezey
Foundation
Suffolk County Economic
Development

LEADING PLAYER

Ingird Arneberg and
Will Marin
Small Business Association
New York State Council
on the Arts
The Dooner-Rockwell
Charitable Trust
Isabella Rossellini

PRINCIPAL ROLE

County of Suffolk
Arts Council

DIRECTORS CIRCLE

Cullen and Danowski, LLP
Thomas Gavin
Existence Media
Phylis Natoli
Frank and Ginny Palamara
The Timlin Family
Frank and Marie Trotta

FRONT ROW VIP

Bill Allan and
Mary Lou Maloney
The Ballan Family
Susan Blecher
John and Loree Bowcock
Estella and Robert Clasen
South Country Lions Club
John Shea Jr. and
Diane Crean
Linda and Charles Desjardin
Fiori Enterprises
The Flagg Family
Flanzer Construction
Judy Fortuna-Ince and
Peter Ince
Julie Lachman

Christopher Landy
Vincent and Linda Leuzzi
The John F. Kennedy for
the Performing Arts
Joe and Tricia Manno
Glenn and Louise Mehrrens
Dave and Debbie Morrissey
Mrs. Lisa Nenadich
Shoey Shoemaker
Cathy Siegel
Carol Wasnok

BACKSTAGE PASS

Kent and Connie Adee
Kristina Allen and
Steve Hayden
Michael and Jessica Baker
The Beehner Family
Dr. and Mrs. Chantal and
Richard Berman
Paul Bonfanti
Ellen Clyne and
Reiny Schumann
Thomas and
Sara Jane Corwin
John and Erna Cuenin
Brian and Mary Jane Cullen
Gloria Cummings
Alexandra Diamond
Patricia Dima
Raymond and Therese Ebarb
Lauren Edwards
Rich Fallon
Joanne Fawcett
Cheryl A. Felice and
Lorraine Kuehn
Ed Graziano and
Doug Carabe
Phil and Debbie Gucci
Tim Kana and Julie Lumpkin
Annmarie and Gary Loesch
Jane Love
Margie K Ludewig
J. Doc Maloney
Gloria Mancuso and
Glenn Dielmann
The Marra Family
Roe Agency
The Minutillo Family
Michael and
Hwasoon Mullaney
Mary Murphy
New Home with Nick
@ eXp Realty
Dr. Mary Koslap-Petraco
Joan Quarltre

Billy Rignola
 Barbara and Eric Russo
 and Family
 Ray W. Schiemel and
 Susan E. Coseglia
 Judith Steinberg
 Ms Michelle Stiriz
 Hans and Rita Tempel
 Frank and Marie Trotta -
 Fire News
 David Tobachnik and
 Alice Anne Humphrey
 Bob and LouAnn Tuzza
 Theodore Weinberg
 Joseph and
 Patricia Van de Wetering

CASST MEMBER

Mrs. Joanne Bennett
 Loralynn Buono
 Stanley & Geraldine Chrein
 Kathy and Tom Cullen
 Thomas Derby
 Lauren Edwards
 Andrew and Barbara Festa
 Anne Fichtner
 Anna Lou Fletcher
 Jane Potter Graham
 Chris Kelley
 Joan Kirtman
 Long Island
 Community Hospital
 Hosun Moon
 Zach Motl
 Jean Norland
 Martin J. Olsen
 Victoria Pegg
 Bob and Ann Quinn
 The Rasmussen Family
 Janet and John Taylor
 Allen and Angela Welcome
 Bruce Winant

STAGE HAND

Keith and Amy Andrews
 Ellen Beebe
 Mrs June Beuttenmuller
 Marianne Cambria
 Gary Carpenter
 Jean Coakley
 Anne Cohalan
 Nancy Cohen
 Kenneth Dobert
 Carol Dubin
 Nancy Duncan &
 Jamie Moog

Nicholas DVachio
 Morgen Forman
 Fran and Laurie Fosmire
 Ms Janet Foster
 Joe and Joan Fuoco
 Stewart Gaffan
 Joyce Gambina
 Adrienne Geraci
 Edward Gillule
 Kevin Glynn
 Ada Graham
 James Gordon
 Doreen Gruber
 James Hansen
 Barbara Harman
 Sally Harris
 DiGrace Hoiland
 Michael Hopewell
 Richard Hoshino
 Robert K. Irish
 Robert Judem-Cautin
 The Juvier Family
 Susan Kahl and
 Jim Vaughan
 Pam Kalaygian
 Tim Kana and
 Julie Lumpkin
 Francine Katzman
 Janice F. Klein
 Susanna Klein
 Susan Kramer
 Erin Kraus
 David and
 Peggy Kulakowski
 Tara Malone
 Claudia Manitta
 Beatrice Marelli
 Angela Marschall
 Peggy Mastroddi
 Maureen McBride
 Carolann Miley
 Michael Minarik
 Jessica Moller
 Marilyn Monteith
 Mrs. Vardi Mortellaro
 Donna Mossey
 Mrs. Marilyn Munson
 Gary Murphy
 Christina Obremski
 Kevin and Joy O'Brien
 Ann & Bill O'Shea
 Richard and
 Ruth Ann Otterstedt
 Jeanette and Louis Paolillo
 Lynn and Joe Pessalano

Anthony and
 Rachele Psaris
 Debra Pyle
 Jules Radino
 John Rand
 Sandy Reifel
 Helen Reineking
 Mrs. Kathleen
 Rignola-Ennesser
 Roe Agency
 Amanda Rofrano
 Mr Robert Rosenberg
 Frank Schmidt
 Mrs. Helen Schottenhamel
 Cathy Shulder
 Donald Steckler
 Joan Stong
 Mrs Carol Tambasco
 Kathleen Twomey-Hoge
 Nancy and
 Roy Vaillancourt
 Marna Varney
 Claudia Vazquez
 Peter Wagman
 Greg and Paula Warmuth
 Margaret Watro
 Mrs. Sandra Wegman
 Cindi and Robert Wellins
 Suzanne Whelan
 Katherine Whittaker
 Dave Winfield
 Linda Yakavonis
 Kathy and Ira Zankel
 Randee Zerner

FAN CLUB

Catherine Ambrosini
 Anastasia Baxter
 Mrs. Joanne Bennett
 Susan Berner
 Christopher Borbet
 Claudine Burhardt
 Terence Callahan
 Janet Caponi
 Louis Cappellini
 Lisa Caravella
 Ashley Cooke
 Laura Day
 Johnny DeVito
 Carrie Desmond
 Michael Dinkelman
 Heather Donahue
 Thomas Drew
 Mr. Daniel Feinstein
 Dan Fink
 Nicole Fisher

Theresa Foster
 Ms Elizabeth Gardiner
 Edward Gillule
 Ms Stacey
 Governale-Bloom
 Leonard Groopman
 Kathleen Irish
 Barbara Knowles
 Joseph Lieb
 Ely Logan
 Melissa Lund
 Joan Lund
 Runnell Lyons
 Claudia Manitta
 Dorothy McCormick
 Ms. Melanie Merrill
 Elizabeth
 Meyer-McKeown
 John and Elizabeth Morris
 Gerilyn Murphy
 Carlos O'Ferral
 Mrs. Stacey Parks
 Gwen Passaro
 Peter Pece
 J Perry
 Mr Donald Quigg
 Mark Rubin
 Mark Rosman
 Jeannetter Rossoff
 Rosaria Sasso
 Leonard Schnitzer
 Rebecca Siegel
 Stella Silverman
 Wendy Innes
 Mr. James Slattery
 Mary Ellen Smith
 Renee Smith
 Amy Szumczyk
 Peter Teofrio
 Assunta Tesoro
 Melissa Tourtoulis
 Terry Tuthill
 Michele Viccaro
 Timothy Watkins
 William and
 Janet Wrobleski
 Curtis Youngerman
 Richard Zuzzio

*All names listed reflect
 current FY donations

PORTERS

on the lane

COCKTAILS  RESTAURANT  CATERING



FOR RESERVATIONS *or* MORE INFO CONTACT US

phone ★ 631—803—6067

email ⚓ portersbellport@aol.com

NEW MENUS - SPECIALS - MUSIC - UPCOMING EVENTS

SUMMER HOURS  MORE VISIT ...

website ⚙ www.portersonthelane.com

Address - 19 Bellport Lane Bellport Village N.Y. 11713

SOMETHING SWEET FROM ACROSS THE STREET



Carla Marla's

ICE CREAM PARLOR & CANDY SHOP



one free topping w/ this coupon

CALL: 631-803-6630

email: carlamarlas@hotmail.com

8 BELLPORT LANE, BELLPORT VILLAGE, NY 11713