



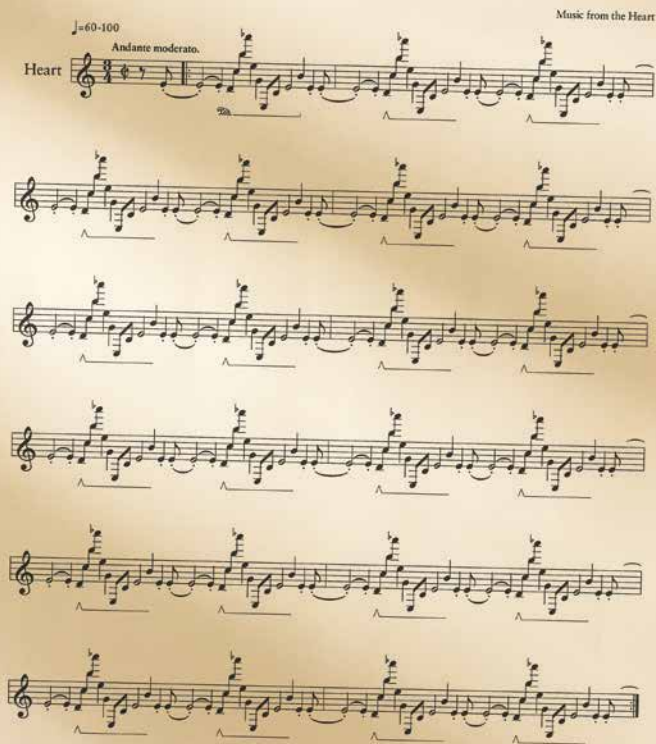
THE *Gateway* 30TH
ANNIVERSARY

ON YOUR FEET!

THE STORY OF EMILIO
& GLORIA ESTEFAN

2019

A Healthy Heartbeat



A healthy heartbeat is our favorite song.

NOTHING SOUNDS BETTER THAN A HEALTHY HEART. But when a heart develops an arrhythmia, causing it to beat too weakly, too fast or just irregularly, it can cause more than discord. It can endanger your life. That's why the electrophysiologists at the Stony Brook Heart Rhythm Center use the most advanced 3D mapping technology to locate the precise heart tissue causing the problem. So our team can perform accurate ablation procedures on even the most complex arrhythmias. And your heart can sound like music to your ears.





PAINTERS'
Restaurant

JOIN US FOR
BRUNCH LUNCH DINNER

.....
Serving Brunch Saturday & Sunday
11am - 4pm
.....

FOR CATERED
EVENTS

CALL OUR CATERING DIRECTOR
ZACH 631.923.8860

2 MILES EAST OF GATEWAY PLAYHOUSE
416 SOUTH COUNTRY RD. BROOKHAVEN, NY 11719

631-803-8593

PORTERS

on the lane

COCKTAILS  RESTAURANT  CATERING



FOR RESERVATIONS *or* MORE INFO CONTACT US

phone ★ 631 — 803 — 6067

email ⚓ portersbellport@aol.com

NEW MENUS - SPECIALS - MUSIC - UPCOMING EVENTS

SUMMER HOURS  MORE VISIT ...

website ⚙ www.portersonthelane.com

Address - 19 Bellport Lane Bellport Village NY 11713

SOMETHING SWEET FROM ACROSS THE STREET



Carla Marla's

ICE CREAM PARLOR & CANDY SHOP



one free topping w/ this coupon

CALL: 631-803-6630

email: carlamarlas@hotmail.com

8 BELLPORT LANE, BELLPORT VILLAGE, NY 11713



Listen to Lawrence! *...and learn how to plan* *the RIGHT way.*

FREE SEMINAR!

- Learn how to protect your assets from the high costs of Long Term Care
- Learn how to protect the money you leave to your children from their divorce
- Learn how to protect your children's inheritance from creditors, taxes and their own poor judgment

This informative program is FREE, but reservations are required.

Call 631-234-3030 or go online at: www.davidowlaw.com to find an upcoming seminar in your area!



Lawrence Eric Davidow
Senior and Managing Partner
DAVIDOW, DAVIDOW
SIEGEL & STERN, LLP
LONG ISLAND'S ELDER LAW,
SPECIAL NEEDS
AND ESTATE PLANNING FIRM



DAVIDOW, DAVIDOW, SIEGEL & STERN, LLP

Original Firm Founded 1913

Long Island's Elder Law, Special Needs and Estate Planning Firm

1050 Old Nichols Road - Suite 100, Islandia, New York 11749 | Tel. (631)234-3030

www.davidowlaw.com

Additional office locations: Garden City | Mattituck



It's been 70 years since our humble beginnings when the performances were in the barn and Daisy the cow roamed the area which is now the spot where this theater stands. Many years have gone by and dozens of shows have entertained and enthralled Long Island audiences since then. We have maintained the family spirit and drive that energizes each production and has made each Gateway show stand out in a unique way. I look forward to a sensational run with *On Your Feet*!!

And there is a lot more in store this summer: The hilariously funny off-Broadway smash hit *Forbidden Broadway* is next, followed by our second spectacular Long Island premiere this season - *The Bodyguard*, starring Kimber Sprawl. Next will be the fan favorite, *The Sound of Music*, which will be directed by Broadway legend Mitzi Hamilton. Finishing up our summer season at Patchogue Theater, the much anticipated – *Kinky Boots*. For the kids, we've got great shows all summer including *Frozen* and *Aladdin Jr.*, and for music fans we've got summer concerts on select nights. Make sure you are on our email list and stay in touch in whatever way works best for you – text alerts, social media etc. we love to hear from you!

I want to thank you for being here tonight and I invite you to be part of our 70th anniversary celebration on June 28th at Sunset Harbor. It will be an evening of music, dance and joy as we celebrate and honor the past and look forward to the future.

Sincerely,

A stylized, handwritten signature in white ink that reads "Paul Allan".

Paul Allan
Executive Artistic Director

THE BRISTAL ASSISTED LIVING • WHERE EVERY DAY MEANS MORE®

EXPERIENCE THE DIFFERENCE EXPERIENCE THE BRISTAL



Photos: Bistro, The Bristal at Holtsville; Dining Room & Game Room, The Bristal at Sayville

The
Bristal
ASSISTED LIVING

Call Us Today to Schedule Your Visit

HOLTSVILLE | 5535 Expressway Drive North | (631) 828.3600

SAYVILLE | 129 Lakeland Avenue | (631) 563.1160

thebristal.com



Licensed by the New York State Dept of Health • Eligible for Most Long Term Care Policies
Equal Housing Opportunity • Quality Communities by The Engel Burman Group



FROM BUSINESSES ON MAIN STREET TO YOUR FRIENDS DOWN THE STREET

Working **TOGETHER**
sets us apart.

Proud Supporter of
Gateway Performing
Arts Center



With community banking from Montauk to Manhattan, BNB Bank is committed to keeping neighborhoods strong. One of New York's fastest growing community banks, BNB works with our neighbors to help others in need – so together, we all succeed.



Member FDIC

COMMUNITY BANKING FROM MONTAUK TO MANHATTAN

631.537.1000 | WWW.BNBBANK.COM





Presents

ON YOUR FEET!

THE STORY OF EMILIO AND GLORIA ESTEFAN

Featuring Music Produced and Recorded by

EMILIO and GLORIA ESTEFAN & MIAMI SOUND MACHINE

Book By

ALEXANDER DINELARIS

Featuring

EDDIE NOEL

MARINA PIRES

With

KARMINE ALERS SYDIA CEDAÑO EMILEE HASSANZADEH RUBEN FLORES

ANDRÉS ACOSTA CARINA AVILA ANGELY CARUCCI LIESL COLLAZO

SHARLANE CONNER RONNY DUTRA HÉCTOR FLORES JR. CODY GERSZEWSKI

MIKI MICHELLE DANIEL J. O'CONNOR VINCENT ORTEGA ANTONY SANCHEZ

And

OLIVIA HYL

HALLE MORANA

JOHN PITOCO

HUNTER RASMUSSEN

Executive Artistic Director

PAUL ALLAN

Production Manager

BRIAN LOESCH

Director of Business Operations

JEFF BELLANTE

Associate Artistic Director

MICHAEL BAKER

Production Stage Manager

JAMES HANSEN

Lighting Designer

KIM HANSON

Director of Development

SCOT ALLAN

Video Design

DARREL MALONEY

Scenic Design

DAVID ROCKWELL

Costume Design

EMILIO SOSA

Musical Director

ANDREW HAILE AUSTIN

Associate Director/Choreographer

MARIA TORRES

Director

KEITH ANDREWS

Originally Produced by

James L. Niderlander Estefan Enterprises, Inc. Bernie Yuman

Roy Furman Terry Allan Kramer Catherine Adler Caoila Productions Reg Grove IPN/Albert Nocciolino

Stewart F. Lane/Bonnie Comley Pittsburgh CLO Eva Price Iris Smith Broadway Across America

Larry Hirschhorn/Double Gemini Productions Marc David Levine/Burnt Umber Productions Stella La Rue/Lawrence S. Toppall

ON YOUR FEET!

THE STORY OF EMILIO & GLORIA ESTEFAN

THE CAST

CAST OF CHARACTERS

GLORIA ESTEFAN.....	Marina Pires*
EMILIO ESTEFAN	Eddie Noel*
GLORIA FAJARDO.....	Karmine Alers*
JOSÉ FAJARDO	Ruben Flores*
CONSUELO.....	Sydia Cedeño*
REBECCA FAJARDO	Emilee Hassanzadeh
NAYIB ESTEFAN.....	Hunter Rasmussen
YOUNG GLORIA ESTEFAN.....	Olivia Hyl, Halle Morana
ENSEMBLE	Andrés Acosta*, Carina Avila, Angely Carucci, Sharlane Conner*, Liesl Collazo, Ronny Dutra, Emily Esposito, Héctor Flores Jr.*, Cody Gerszewski, Daniel J. O'Connor*, Miki Michelle, Vincent Ortega*, Antony Sanchez*
YOUTH ENSEMBLE.....	John Pitocco
PRODUCTION STAGE MANAGER.....	James O. Hansen*
ASSISTANT STAGE MANAGER.....	Elise Jenkins*
DANCE CAPTAIN.....	Vincent Ortega*

UNDERSTUDIES

GLORIA ESTEFAN.....	Emilee Hassanzadeh
EMILIO ESTEFAN	Andrés Acosta*
GLORIA FAJARDO/CONSUELO.....	Emily Esposito
JOSÉ FAJARDO.....	Vincent Ortega*
PHIL/DR. NEUWIRTH/ENSEMBLE	Scot Patrick Allan*
BIG PAQUITO/LATIN DJ/ENSEMBLE.....	Michael Edward Baker*

THE BAND

MD/KEYS	Andrew Haile Austin
WOODWINDS	George Cortes
TRUMPET	Kurt Marcum
TROMBONE	Peter Isaac
GIUITAR	Ray Sabatello
BASS.....	Jim Cammack
DRUMS	Peter Greco
PERCUSSION.....	Emedin Rivera



*Actors employed in this production are members of Actors' Equity Association, the union of Professional Actors and Stage Managers in the United States.



The Musicians employed in this production are members of the American Federation of Musicians.



The Director/Choreographer is a member of the Society of Stage Directors and Choreographers, Inc., an independent national labor union.

Stellar performances start here.

Be Ready.

St. Joseph's College offers innovative academic programs developed by top industry leaders and a rich, vibrant campus life to prepare today's students to take center stage as tomorrow's leaders.

FIND OUT MORE

sjcny.edu

631.687.5100

St. Joseph's
College
NEW YORK



Ready. Set. Joe's®

LONG ISLAND • BROOKLYN • ONLINE

SCENES and MUSICAL NUMBERS

ACT I

Washington, D.C.-1990	
<i>"Overture"</i>	Gloria, Ensemble
Vietnam, 1966	
<i>"Cuando Sali De Cube (When I Left Cuba)"</i>	Little Gloria, José
The Barracks, Miami	
<i>"Tradición"</i>	Little Gloria, Old Man, Gloria, Ensemble
Fajardo Apartment	
Emilio's Apartment	
<i>"Si Señor"</i>	Emilio, Kiki, Marquito
<i>"Anything for You"</i>	Gloria, Rebecca
Fajardo Living Room	
Emilio's Garage	
<i>"1-2-3"</i>	Gloria, Ensemble
<i>"I See Your Smile"</i>	Emilio, Gloria
Fajardo Kitchen	
Lounge, Havana	
<i>"Mi Tierra"</i>	Gloria Fajardo, Ensemble
Phil's Office	
Mexican Restaurant	
<i>"Con Los Años Que Me Quedan"</i>	Three Guitarristas
<i>"Dr. Beat"</i>	Gloria, Ensemble
José's Bedroom	
<i>"When Someone Comes Into Your Life"</i>	José, Gloria
Miami	
<i>"Conga"</i>	Gloria, Ensemble

ACT II

Executive's Offices, NYC	
<i>"Conga"</i>	Gloria, Ensemble
<i>"Get On Your Feet"</i>	Gloria, Ensemble
<i>"Live For Loving You"</i>	Gloria, Ensemble
<i>"You'll Be Mine (Party Time)"</i>	Gloria, Ensemble
Fajardo Kitchen	
Wembley Arena	
<i>"Oy Mi Canto"</i>	Gloria, Ensemble
Barajas Airport	
Kennedy Center	
<i>"Cuba Libre"</i>	Gloria, Ensemble
Dressing Room	
<i>"Famous"</i>	Gloria
Tour Bus	
Hospital Room	
<i>"If I Never Got to Tell You"</i>	Gloria Fajardo, Emilio
Going Into Surgery	
<i>"Wrapped"</i>	Gloria, Little Gloria, José, Emilio, Ensemble
Post-Surgery	
Hospital Press Conference	
Estefan Gym	
<i>"Don't Wanna Lose You"</i>	Emilio, Ensemble
<i>"Reach"</i>	Ensemble
American Music Awards	
<i>"Coming Out of the Dark"</i>	Gloria, Ensemble
Bows	
<i>"Megamix"</i>	Company

NOW ACCEPTING MEMBERS FOR THE

2019 SEASON



BELLPORT GOLF CLUB

20 South Country Road | Bellport, New York 11713 | 631-286-7206 | jimmy@bellportgolfclub.com
www.bellportgolfclub.com



ROYAL OAK DINER

BREAKFAST, LUNCH & DINNER DAILY

Complete Early Bird Dinners • 3:00-5:45pm

Complete Dinner Specials

Lunch Specials Daily • 11:00am-3:00pm

Sun-Thurs 6:30am-10pm • Fri 6:30am-11pm

Sat 6:30am-midnight

900 Station Road, Bellport

631-286-5757



THE BELLPORT

Steps away from the Gateway Playhouse

★★★★

New York Times Review

159 South Country Road, Bellport, New York 11713

(631) 286-7550 | www.bellport.com/thebellport



Your Trusted Reverse Mortgage Expert



Patricia Whitlock, CRMP®

631-873-8277

NMLS#64560

Disclaimer: Loans are subject to approval. Additional eligibility requirements, terms, conditions, fees & exclusions apply. **Quontic Bank is not affiliated with or acting on behalf of the Federal Housing Authority (FHA) or any government agency or government sponsored entity. Quontic Bank, 31-05 Broadway Astoria, NY 11106 NMLS ID: 403503 800-908-6600. Quontic Bank is a federally registered service mark owned by Quontic Bank Holdings Corp.



www.papanickspizzeria.com

Home of the Crispy Crust • Daily Specials

631-286-6400

117C South Country Road | Bellport Village

DON'T LET PAIN Interfere With Your Life!



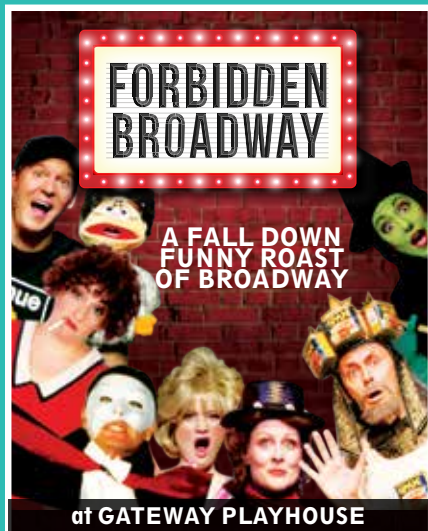
DR. JOSEPH R. MERCKLING

Providing Relief for: Postural Problems and Pregnancy Related Back Pain
We use Rock Tape Kinesio-Tape
Neck and Back Pain | Headaches
TMJ Pain | Sciatica | Scoliosis

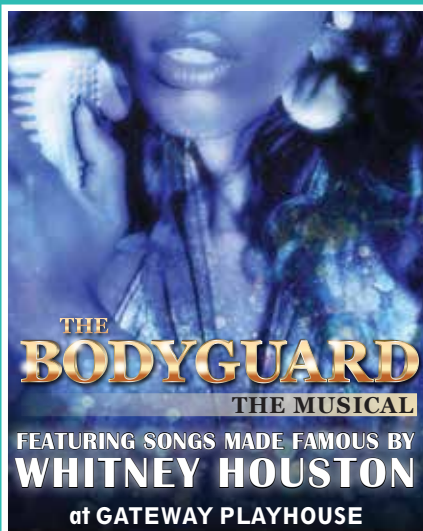
Merckling Family Chiropractic, P.C.

16 Station Road, Suite 2, Bellport Village

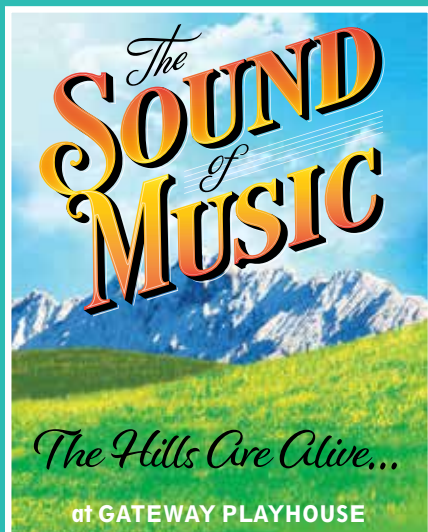
631-286-2300 | www.mercklingdc.com



JUN 5 - 22



JUL 3 - 20



JUL 31 - AUG 17



AUG 28 - SEP 14

GATEWAY'S **2019** SEASON
THEGATEWAY.ORG • 631.286.1133

CHILDREN'S THEATER

FUN FOR THE WHOLE FAMILY, TICKETS START AT \$15!



JULY 5-6 • 11am
at GATEWAY PLAYHOUSE



DINOSAURS

JULY 27 • 11am
at GATEWAY PLAYHOUSE



GATEWAY'S SCHOOL FOR
THE PERFORMING ARTS
PRODUCTION OF

JULY 12 & 19 • 11am & 2pm / JULY 13 & 20 • 11am
at GATEWAY PLAYHOUSE



AUGUST 2
11am & 1:30pm
at GATEWAY PLAYHOUSE



AUGUST 9, 16 & 23 • 11am & 2pm
AUGUST 10, 17 & 24 • 11am / AUGUST 18 • 2pm
at GATEWAY PLAYHOUSE

CONGRATULATIONS
HALLE, HUNTER,
JOHN, AND OLIVIA,
NOW APPEARING IN
ON YOUR FEET!

THE GATEWAY
SCHOOL FOR THE
PERFORMING
ARTS

Be on stage!

LEARN, LAUGH, SHINE!

ACTING CLASSES FOR ALL AGES

NOW ENROLLING
TECHNIQUE • MUSICAL THEATRE • PRODUCTION

TO LEARN MORE ABOUT GATEWAY SCHOOL FOR THE PERFORMING ARTS
EMAIL ACTINGSCHOOL@THEGATEWAY.ORG OR CALL (631) 286-0555, EXT 5000



Patchogue Family Dental, PC

WHERE PATIENTS BECOME FAMILY

General and Cosmetic Dentistry

TMJ and Facial Pain Management

Implants and Botox

Orthodontics

2 LOCATIONS

East Quogue
631-653-5888

East Patchogue
631-475-1191

Please visit our website for complete services
patchoguefamilydental.com



ANDRÉS ACOSTA (*Ensemble u/s Emilio*) is a NYC based actor making his Gateway debut. National Tours: *West Side Story* (Bernardo), *Flashdance* (Joe).

Regional: Paper Mill Playhouse, PCLO, Asolo Rep, North Shore Music Theatre, Merry Go Round Playhouse & Riverside Theatre. Favorite professional credits: *Evita* directed by Josh Rhodes and *In the Heights* with original Tony winning choreography by Andy Blankenbuehler. BFA Music Theatre from Florida State University & proud member of AEA. Special thanks to Maria Torres & MSA agency.



KARMINE ALERS (*Gloria Fajardo*) is delighted to be making her debut at The Gateway. Theatre credits include *On Your Feet!* (Broadway and 1st National Tour,) *In the*

Heights (Seattle Rep/Milwaukee Rep/Cincinnati Playhouse, *RENT* (Broadway and National tour), *Aida* (Barn Theater) Television/film credits include: *The Unbreakable Kimmy Schmidt*, *Rescue Me*, *The Following*, *Naked as We Came* and *Bloodline*. Album on iTunes "For You." To my Siblings and my Romeos! Seguirás en mis recuerdos para siempre Mami, Nene y Mamá.



CARINA AVILA (*Ensemble*) is excited to be making her musical debut in *On Your Feet!*. Carina was born and raised in California. She moved to New York City in 2015 to

pursue musical theater. In 2017 she graduated from Broadway Dance Center's Professional Semester. Carina has worked in film and TV appearing on Nickelodeon and in ads for Apple. She made her New York City stage debut in *Carmen: To Havana and Back* (Public Arts). Carina is thrilled to be a part of this cast and would like to thank her supportive family. @carinaballerina_



ANGELY CARUCCI (*Ensemble*) Professional Certifications : Multiple Venezuelan National Salsa Champion. Latin, Contemporary & Jazz Professional Dancer &

Choreographer. Federazione Italiana della Danza Master (FIPD) Television : *Q'Viva the Chosen*

Who's Who

(J.lo & Marc Anthony), *Quien Baila Mejor*, *Tierra de Reyes*, *Dueños del Paraíso*, *Premios Juventud*, *Premios Casandra*. Theater : Havana Music Hall, Actors's Playhouse, Coral Gables, FL. USA Multiple shows with artists, including: Gilberto Santa Rosa, Laura Pausini, Pitbull, Oscar de Leon, Jerry Rivera, and Gloria Gaynor, among others. International Dance Congresses: USA, Germany, Italy, Spain, Ireland, France and many more. Regional production of *On Your Feet!*. @Angely Carucci



SYDIA CEDEÑO (*Consuelo*) is over the moon making her debut with the Gateway Playhouse. Favorite credits include *In the Heights*, *The Producers*, *Gypsy*, *Pippin*, *Errol* and *Fidel* (NYMF/Premiere), and *Beyond Therapy*. Co-founder of the Runaway Theater Company where she served as Artistic Director as well as performer. Sydia was a reader for the "All Write" Selected Shorts program with Symphony Space NYC for many years recorded for NPR. Love to my husband and thanks to About Artists Agency. Para Mamá



LIESL COLLAZO (*Ensemble*) is a graduate of the musical theatre department at the University of Michigan, where she played roles such as Franca in *The Light in the*

Piazza and Stephano in *The Tempest*. She is a native of Guaynabo, Puerto Rico and thanks her family for their constant support. Liesl is excited to make her Gateway Playhouse debut! IG: @lieslcollazo. Special thanks to 44 West Entertainment.



SHARLANE CONNER (*Ensemble*) Regional credits include *In the Heights* at Olney Theatre Center (Marcos Santana). Past Experience: Actor's Fund Gala (Maria Torres),

Bare Opera's *Goyescas* (Liz Piccoli), *Apollo Club Harlem* (Maurice Hines). She has toured internationally with Catapult Entertainment

INTRODUCING LONG ISLAND'S FIRST TeliStat™ Restorative Care Unit

Brookhaven Health Care Facility is pleased to introduce a state-of-the-art **CARDIAC MONITORING UNIT**. The concept and associated proprietary technology was developed by Dr. Anthony Bacchi and is designed to treat higher acuity patients more effectively in a nursing home setting.

The unit is staffed with professionally trained nurses who are certified in advanced life support and have a 6-to-1 ratio with their patients. The unit's comprehensive real-time observation includes monitoring of:

- Blood pressure
- Pulse & pulse oximetry
- ST elevation/depression
- Systemic vascular resistance
- Stroke volume
- Cardiac rhythm
- Cardiac output
- Cardiac index

**NOW ACCEPTING
NEW PATIENTS.
CALL FOR A
TOUR TODAY.**



BROOKHAVEN
HEALTH CARE FACILITY

Gazzola Drive • East Patchogue • (631) 447-8800 • BrookhavenHealthCareFacility.com



THE NO FEE

New Showroom • Enclosed Service
ALL TO SERVE



SAYVILLE FORD
FAMILY OWNED
& OPERATED
SINCE 1957

LOW PRICE GUARANTEE • SALES STAFF WITH OVER 10 YEARS EXPERIENCE
SERVICE OPEN 6 DAYS A WEEK (MONDAY - SATURDAY)
DRIVE-IN RECEPTION AREA (NO APPOINTMENTS)

**\$250
OFF**

**Any New or Pre-Owned
Vehicle Purchase or Lease!***

*Cannot be combined with any other offers. Coupon must be presented when order is written. Valid only at Sayville Ford.

Coupon Expires: 12/31/19

5686 SUNRISE HWY EXIT 50, SAYVILLE, NY



ES DEALER!

Service Drives • Giant Selection
YOU BETTER!



ER 150 YEARS OF COMBINED EXPERIENCE • FLEXIBLE FINANCING OPTIONS
(7-SATURDAY) • NIGHT SERVICE HOURS TIL 1AM (MONDAY-FRIDAY)
ENT NECESSARY) • FACTORY CERTIFIED AND TRAINED TECHNICIANS

**\$19.95
OIL CHANGE
SPECIAL**

*Up to 5 quarts, additional extra. Full Synthetic or Diesel oil extra. Coupon must be presented when service order is written. Cannot be combined with any other offers or previous purchases. Cost does not include taxes, shop supplies, and hazardous waste fees, if applicable. Valid only at Sayville Ford.

Coupon Expires: 12/31/19

**FREE
WHEEL ALIGNMENT
CHECK**

*Coupon must be presented when service order is written. Cannot be combined with any other offers or previous purchases. Cost does not include taxes, shop supplies, and hazardous waste fees, if applicable. Valid only at Sayville Ford.

Coupon Expires: 12/31/19

NY • SAYVILLEFORD.COM • 855.783.7721

(seen on *America's Got Talent*) and her recent TV credits include *Pose* on FX (Ryan Murphy). She is thrilled to be joining the first regional production of *On Your Feet!* and cannot thank her husband enough for his continued love and support! IG: @sharlane_c



RONNY DUTRA (*Ensemble*) is elated to be part of the Gateway family! Most recently, he produced and starred in *WAVE*, his autobiographical show telling his journey from Brazil to NYC. Prior credits include *SWAY – A dance trilogy*, *Legally Blonde*, **II Foreign Exchange** and *RENT* (Mark Cohen). @ronnydutra www.ronnydutra.com



EMILY ESPOSITO (*Ensemble*, u/s *Gloria Fajardo*, u/s *Consuelo*) is thrilled to be back at Gateway! Other credits include *Fame*: *National Tour*, *Hello Dolly*, *Evita*, *A Christmas Story*, and *West Side Story* as well as the world premiers of off Broadway shows *Medicine the Musical* and *A Never Ending Line*. Thank you to Michael, Rachel, Scot and Paul for having her back. An infinite thank you to Keith, Maria, Andrew and the rest of the cast and crew for their insanely hard work especially Vince. Beyond thankful to Kris for making this possible, Matthew, the girls, GBM, Mom, Dad, and Nana. www.emilyesposito.com



HÉCTOR FLORES JR. (*Ensemble*) is thrilled to be making his Gateway debut in a show that celebrates Latino people! Muchas gracias a Mami, mi familia, The KOTU Collective, y Robbie! Favorite Regional Credits include *In the Heights*, *West Side Story*, *Sister Act*, *Ghost*, *Mamma Mia!*, *Altar Boyz*. He's also been seen on TV's *Full Frontal With Samantha Bee*, toured with boy-band, *Larger Than Life*, and placed top 5 in several categories at The FADS World Ballroom Championships. www.HectorFloresJr35.com @hectorfloresjr35



RUBEN FLORES (*José Fajardo*) is thrilled to join the Gateway Playhouse family, after originating the role of Enrique in *Havana!*

Who's Who

directed/choreographed by Warren Carlyle. NYC: *In the Heights* (Broadway), *Doctor Atomic* (Met Opera), *Two Gentlemen of Verona* (Public Theater), *Roller Derby*. Regional/International: *Evita*, *Cats*, *South Pacific*, *Beauty & the Beast*, *Kiss of Spider Woman*, *Grease*. TV: *L&O-CI*, *Caroline Rhea Show* (w/ Paula Abdul), *Picardia Mexicana*. Voiceover work: HBO Sports, Netflix, numerous commercials; solo shows at Joe's Pub. Share your light! Instagram/Twitter: @RubenFloresNYC



CODY GERSZEWSKI (*Chris*, *Ensemble*) Gateway Debut! Credits: *A Gentleman's Guide to Love and Murder* (The John W. Engeman Theater), *Jane Eyre* (Cleveland Musical Theatre [Revised World Premiere], 11th Hour Theatre), *Miracle on 34th Street*, *Show Boat* (Arizona Broadway), [...] *Trailer Park Musical* (Sierra Repertory), *South Pacific*, *Mamma Mia!* (Fireside Theatre). Thanks to his Fargo-Family, Keith Andrews and Michael Baker, and everyone at The Gateway. Love and gratitude to "Philly", my partner in crime. @cgerszewski www.codygerszewski.com



EMILEE HASSANZADEH (*Rebecca Fajardo*, u/s *Gloria Estefan*) is elated to tell this story and be a part of The Gateway's 70th anniversary season. A Minnesota native, Emilee has appeared regionally throughout Minneapolis and the Northeast. Favorite credits include: *Oklahoma* (Ado Annie), *Cats* (Bombalurina), *Beauty & the Beast* (Belle), *Beehive*, and *Kiss Me Kate* (under the direction of Lee Roy Reams). Emilee is a recipient of Hennepin Theatre Trust's Triple Threat Award. Training: BFA Musical Theatre Coastal Carolina University (2018). Big hugs to her family and mentors for their encouragement. www.emileehassanzadeh.com

Marketing Solutions for a Digital & Analog World



web • print • design

searlesgraphics.com | 631.400.3086



OLIVIA HYL (*Young Gloria Estefan*) is an 11 year old actress/singer/ and student who has been performing in children's theater productions since the age 8. Olivia is a student

at The Gateway Acting School where she has taken production, musical theater auditioning and advanced acting classes. She is a choir member at the New York Metropolitan Youth Orchestra who has performed at the iconic Carnegie Hall and a Suffolk County Music Educators Association Choir participant. Past shows include *Wizard of Oz*, *Seussical*, *Aristocats*, *Lion King*, *The Little Mermaid Jr.*, and *Mary Poppins Jr.* Olivia is excited to be playing Young Gloria for her first ever Mainstage Production at The Gateway. She looks forward to working with amazing talent and is thankful for this opportunity.



MIKI MICHELLE (*Robin, Ensemble*) is represented by Clear Talent Group. She received her formal training at the Boston Arts Academy, OriginNation Cultural Arts

Center, The Ailey School, and UMass Amherst where she earned dual degrees in Dance and Psychology. Miki was closely mentored by Rhapsody James and later joined her premiere company, Rhapsody En Dance, as a performer and rehearsal director. She has worked with such artists as Rihanna, Beyonce, Kelly Clarkson, Katy Perry, and completed a national tour with Hip Hop Icon Kurtis Blow. She played the lead role of Allie in the Off-Broadway show *iLuminate* and performed with legendary artists at Black Girls Rock! where First Lady Michelle Obama was honored. After returning from a solo, 5 month backpacking trip in Southeast Asia, Miki is honored to join the Gateway Playhouse family in its production of *On Your Feet!*



HALLE MORANA (*Young Gloria Estefan*) is thrilled to be joining the talented cast of *On Your Feet!* as her first main stage production at The Gateway. She is a proud student of the Gateway Acting School since 2016. Previous credits include: *Wonderland High* (Principal Cheshire), *Peter Pan* (Tiger Lily)

Who's Who

and *Xanadu Jr.* (Terpischore). Halle would like to thank Michael Baker and Rachel Colson for this amazing opportunity to learn and grow. She would also like to thank the entire cast and crew for their wisdom and advice and for making her feel like part of the family.



EDDIE NOEL (*Emilio Estefan*) is excited to continue playing the role of Emilio Estefan and join the "FAMILIA" of Gateway after being on the road for more than a year

with the national tour of *On Your Feet!* His growing career began more than 15 years ago at Gibaro, a national folkloric dance company in his natal Puerto Rico. Since then, he began an extensive parallel training as an actor and singer. Recent credits include: *Godspell* (Jeffrey), *Man of La Mancha* (Dr. Carrasco), *La Cage Aux Folles* (Hanna), *Footloose* (Willard), *Rent* (u/s Roger) and *Hair* (Ensemble). Feel free to visit www.eddienoel.net and follow him on IG/ Twitter/FB: @eddienoelr



DANIEL J. O'CONNOR (*Phil, Ensemble*) is a Long Island native and is thrilled to be making his Gateway debut with *On Your Feet!* Previous stage credits include: *The Producers*, *Cabaret*. Film: *Musical Chairs*, *Meet Up*. Thank you to the creative team, Boston Conservatory, and his friends and family for their unending love and support. www.therealdano.co



VINCENT ORTEGA (*Dance Captain, Ensemble, u/s José*) is excited to return to Gateway Playhouse in his 10th production. Broadway/Tours: *Mamma Mia*. Regional: (Gomez)

Addams Family, (Monty) *Saturday Night Fever*, (Black Stash) *Peter and the Starcatcher*, (Joe) *Flashdance*, (Joey) *Sister Act*, (Lord Farquaad) *Shrek*, (André) *Dirty Rotten Scoundrels*, (MC Phantom) *Rocky Horror Show*, (René) *Babes in Arms* (Theater Row NYC), the world premiere

SHOPPING FOR CAR INSURANCE? CALL ME FIRST.

AVERAGE
ANNUAL
SAVINGS:

\$356*

DRIVERS WHO SWITCHED FROM:

Geico	saved \$305* on average with Allstate
Progressive	saved \$478* on average with Allstate
State Farm	saved \$318* on average with Allstate

Put your policy to the test.

Drivers who switched to Allstate saved an average of \$356* a year. So when you're shopping for car insurance, call me first. You could be surprised by how much you'll save.



John Cuenin

631-758-7225

629 Route 112, Suite 10

Patchogue

jc@allstate.com



Allstate
You're in good hands.®

*Savings based on national customer reported data for new policies written in 2016. Actual savings vary. Discounts subject to terms, conditions and availability. Allstate Fire & Casualty Ins. Co., Allstate Vehicle & Property Ins. Co., Allstate Property & Casualty Ins. Co. & affiliates: 2775 Sanders Rd. Northbrook, IL 60062. © 2018 Allstate Insurance Co.

10012142

A PUB OF THE OLD STYLE

Since 1971



Relax Before or After The Show — Full Bar & Menu

Kitchen Open 11 AM to 11 PM (Mon. thru Sat.) Closed Sunday — Bar 'til 1 AM

70 North Ocean Avenue • Patchogue • (631) 289-1900 • www.reeses1900pub.com

of *A Wall Apart* a new rock musical, featuring original music by Lord Graham Russell of Air Supply. Film/TV: *Movie 43*, *Enchanted*, VMA's, AMA's, Netflix, and Disney Channel. He's had the privilege of working with pop artists such as Ricky Martin, Janet Jackson, Black Eyed Peas and many more. Follow Vince on all social media @VinceOrtega www.VincentOrtega.com



MARINA PIRES (*Gloria Estefan*) is a Brazilian-American actress/singer-songwriter best known for the First National Tour of *On Your Feet!* She's thrilled to be keeping up the tradition playing Gloria in her Gateway debut! Past shows: *Evita* directed by Josh Rhodes, *Into the Woods* with Tituss Burgess at The Arsht Center, and *In The Heights*. Thanks to my Sinclair, Kolker, Wygodny & Pires families! Follow @MarinaMPires & @TheHeartstringsProject for original music. MarinaPires.com



JOHN PITOCO (*Youth Dancer*) started competition dance at age 6 at Crazy Rhythms Dance School in Ronkonkoma, New York. His dedication and passion for dance and karate has been well shown through and through. His dance instructors, Miss Justine Scheller, Miss Stephanie Pitocco & Mrs. Gigi Monseratte have been his reason for his success in hip hop. He plans to continue to work hard and move forward in making dance his future career. The support of his parents, sister, brother and family have pushed him to pursue his passion. At only age 9, his accomplishments in the dance world proved his talent, discipline and love for dance!



HUNTER RASMUSSEN (*Nayib Estefan*) is a student at The Gateway School for the Performing Arts and local youth actor just beginning his journey in live productions. *On Your Feet!* is his very first professional performance, and he is thrilled to be a part of the US Regional premiere! Classes at Gateway: Three seasons of *Let's Pretend* and two seasons of *Page to Stage*. He is also currently preparing for his role as Jack from *Into*

Who's Who

the Woods at his local elementary school. He loves to put on a show and he loves to sing! He would like to thank his family, Ms. Rachel Colson, Mr. Michael Baker, and Director Mr. Keith Andrews!



ANTONY SANCHEZ (*Kiki/ Ensemble*) is excited to make his Gateway debut! Favorite stage credits: *West Side Story* (Nibbles), NCL's *Priscilla Queen of the Desert* (Swing), *Carousel* (Ensemble), *La Cage Aux Folles* (Mercedes u/s Hanna), *Chess the Musical* (Viigan). Also catch him on Comedy Central's new show *ALTERLATINO* this summer. Proud graduate of Edge Pac Scholarship Program. Endless thanks and love to family, friends, Bloc, Cyler and this incredible Company. @sanchez_antony_

KEITH ANDREWS (*Director*) is so excited to direct the Regional Premiere of *On Your Feet!* Last season at The Gateway, Keith directed and choreographed *Nunsense* and the Regional Premiere of the 80's hit *Flashdance- the Musical!* Other shows at Gateway include *Little Shop of Horrors*, *The Rocky Horror Show*, *Rock of Ages*, and *Avenue Q*, *Saturday Night Fever*, *The Addams Family*, *South Pacific*, *Spamalot*, *My Fair Lady*, *9 to 5- the Musical* (starring Sally Struthers), *The Full Monty*, *Dirty Rotten Scoundrels* (starring Joe Piscopo), *The Wedding Singer*, *My Way* (A Musical Tribute to Frank Sinatra), *Cold as Ice*, *Urinetown*, 2009's and 2016's *Holiday Spectacular on Ice*, and *Happy Days*. Previously, Keith has directed the National Tours of *The Full Monty* and *Hello Muddah, Hello Fadduh*. Other recent directing/choreography credits include: *The Buddy Holly Story*, *Million Dollar Quartet*, *Sister Act*, *Shrek*, *Young Frankenstein*, *The Drowsy Chaperone*, *The 25th Annual...Spelling Bee*, *Barnum*, *Pump Boys and Dinettes*, *The Pirates of Penzance*, and *Big River*, to name a few. Later this summer, Keith will be directing and choreographing- *A Wall Apart* - an original rock

ENROLL IN DANCE TODAY!

ALL AGES • ALL LEVELS • ALL STYLES



STAGE DOOR
SCHOOL OF DANCE

WWW.STAGEDOORDANCER.COM

655-19 MONTAUK HIGHWAY, E PATCHOGUE NY 11772 • 631.654.8858

We “Set the Stage” for civilized travel to New England!

• ROOM FOR OVER
90 VEHICLES
EACH CROSSING

• ON BOARD
FOOD SERVICE &
STEAMBOAT LOUNGE

• NUMEROUS
CROSSINGS DAILY

• ENCLOSED
PASSENGER CABIN

BRIDGEPORT & PORT JEFFERSON FERRY

www.88844ferry.com 1-888-443-3779

musical about the rise and fall of the Berlin wall, with music and lyrics by Lord Graham Russell of the rock group, Air Supply. Recently, Keith won three New Hampshire Theater Awards for Best Musical, Best Direction, and Best Choreography for his production of *Dirty Rotten Scoundrels*. In educational theater, Keith directs at SUNY Buffalo, and he has directed and/or choreographed over 70 student industry showcases at the American Musical and Dramatic Academy in NYC. Keith is thrilled to be back at The Gateway and to be working with Maria Torres on this fantastic show. Thanks so much to all who helped with this project, especially Vince, Andrew, Ruthy, and as Always, Paul and Michael. Keith is most excited to bring his 6 month-old daughter Melody into the Gateway family and happy first Mother's Day to his wonderful wife- Amy! KeithAndrewsonline.com

MARIA TORRES (*Choreographer*) is a world-renowned Director, Choreographer, Producer and Philanthropist whose contributions have led the way for Latinos and emerging artists in the arts. She is an active board member for SDC and the League of Professional Theater Women, serving as a consultant and advocate. She has won numerous awards and nominations for her work, and also sits on the committee for the Callaway Awards. TV and Stage credits include new musical *Havana Music Hall* (Director/Choreographer); *Pasion Immersive Theater* (Director/Choreographer); Broadway & National Tour of *On Your Feet!* (Assoc. Choreographer); Broadway & National Tour of *Swing!* (Featured Performer & Specialty Choreographer); *So You Think You Can Dance USA, Spain & Canada* (Choreographer); Global smash hit "Bailamos" Enrique Iglesias music video; Amazon's *The Tick* (Choreographer); AMC's TV show *Turn Washington's Spies* (Choreographer); *Latin Billboard Awards* (Grammy award winner Don Omar - *Telemundo* - Creative Director & Choreographer); Off- Broadway productions of *Four Guys Named Jose* (Choreographer), *The Donkey Show* -A.R.T.(Choreographer), *Mambo Kings* (Lead Dancer & Associate Choreographer); *Celia: The Life & Times of Celia Cruz* (Director & Choreographer); Don Omar's "King of Kings" USA Tour (Co-Director & Choreographer); and *Disney's Golden Mickey International Tour*

(Choreographer). Regional credits include Luis Valdez's "Zoot Suit" at The Mark Taper Forum (Choreographer); "Man Of La Mancha" at The 5th Avenue Theater (Choreographer). Film credits include *Disney's Enchanted* (Choreographer), *El Cantante* (Choreographer & Performer), *Fugly* (Choreographer). With a strong desire to develop aspiring artists, and create bridges to opportunity, Maria co-founded MTEAF, along with husband John OConnor and Vanessa Williams, with the goal of cultivating a reliable network that will uplift, inspire and pay it forward."

ANDREW HAILE AUSTIN (*Music Director*) is a composer, pianist, and conductor currently living in Brooklyn. After graduating from college, he moved to NYC where he worked at several arts schools while free-lancing as a conductor for many theatres and universities in the New York area. Since that time, Andrew has music directed almost 100 productions of operas and musicals across the country most recently at Virginia Music Theatre, John Engeman Theatre, Virginia Stage Company, and Theatre Under the Stars. As a teacher, he has taught both high school and college-age students working at several schools in NYC including the American Musical and Dramatic Academy (AMDA) and ten years at the Governor's School for the Arts in Norfolk, VA. As a composer, his works have been presented up and down the East Coast. In 2016, he was named composer-in-residence for the Tidewater Opera Initiative who presented his opera, *The Snow Maiden of Appalachia*. Andrew holds a Doctorate in composition from the Peabody Institute of Johns Hopkins University where he studied with composer Kevin Puts. This is his 13th production for Gateway, most recently music directing *Flashdance* and *Beauty and the Beast* during the 2018 season. www.andrewhaileaustin.com



ANHEUSER-BUSCH
FAMILY TALK
ABOUT DRINKING



**“STAY CONNECTED. TALK WITH YOUR
TEEN ABOUT UNDERAGE DRINKING.”**

-MJ CORCORAN
PARENT COACH

Parents are the number one influence on teens' decisions about drinking alcohol.*
Learn how to be a positive influence in your child's life.



Clare Rose Inc.



familytalkaboutdrinking.com

© 2011 ANHEUSER-BUSCH, ST. LOUIS, MO. GIP
SOURCE: 2007 SAN PABLO TOWN HALL, CONDUCTED UNDER THE RULES OF THE STATE OF CALIFORNIA

*The
Lake
Shore*

Assisted Living Residence

211 LAKE SHORE ROAD, LAKE RONKONKOMA, NY 11779
631.585.8800 | LAKESHORELI.COM



RATES STARTING AT \$2,500!
CALL US TODAY TO SCHEDULE A TOUR!

JAMES O. HANSEN (*Production Stage Manager*) is thrilled to be returning to Gateway after doing *Beauty & the Beast* and *Flashdance: The Musical* last season! Recent credits include: *Dirty Rotten Scoundrels* (Resident Theatre Company); *Million Dollar Quartet* (Park Playhouse); *Joseph...Dreamcoat* (Theatre by the Sea); *Ain't Misbehavin'* (TBTS); *Disney's Beauty and the Beast* (TBTS); *Beehive* (TBTS). James earned a Bachelor's Degree in Arts Management from Dean College in Franklin, MA. Many thanks to the Creative Team, Cast and Crew! Special thanks to his family and Gabby for their love and support!
JOHansenPSM.com

Who's Who

KIM HANSON (*Lighting Designer*) is happy to be returning for my 34th season here at The Gateway and to be working with Keith and Maria. So many great friends have been made here. And a huge thanks to Paul, Brian, and all the staff for always making my visits here so enjoyable. Here's to the opening of yet another great season!

WARNING: The photographing or sound recording of any performance is strictly prohibited.

FIRE NOTICE: The exit indicated by a red light and sign nearest to the seat you occupy, is the shortest route to the outside. In the event of fire or other emergency, please do NOT run. WALK to that Exit. However, under normal circumstances, when leaving the Theatre, use the center rear exits. SMOKING is prohibited in the BUILDING, as required by the Suffolk County NO SMOKING Ordinance. Smoking in any area designated "No Smoking" renders the offenders subject to a fine, or imprisonment, or both.

WATERSIDE DINING

The *oar*

Steak & Seafood Grill

THE FINEST & FRESHEST SEAFOOD

Enjoy Sunset Cocktails
Open Year Round Lunch & Dinner
Live Music Every Day • Brunch Saturday and Sundays from 11:00 AM – 2:30 PM



264 WEST AVENUE, PATCHOGUE (631) 654-8266 THEOAR.COM



McPeak's Proudly Supports The Gateway Playhouse

- Assisted Living with Supervision
24 Hours per Day, 365 Days per Year
- Post-Hospital/Rehab Care
- Medication Management
- Art Therapy, Music Therapy, and Yoga
- Transportation Services
- Special Diets Observed
- Programs to Increase Awareness for
Those with Cognitive Impairments
- Pet-Assisted Therapy

More than just a place to live... A better way of life.

286 North Ocean Avenue, Patchogue, NY 11772 • 631-475-0445 • www.mcpeaks.com



SOUTH OCEAN GRILL

FINE CASUAL DINING BY THE BAY

Patchogue's Hidden Gem

Executive Chef Hirbin and his staff look forward to serving you!!!

**SPECIALTY COCKTAILS, SANGRIA,
WINE & BEERS**

ARTISAN BREAD MADE ON PREMISES | MARKET SALADS
FRESH VEGETABLES | FRESHLY GROUND BURGERS
HAND SELECTED STEAKS AND FRESH FISH
HOUSE MADE DESSERT SELECTIONS

LUNCH: TUE. – SUN. 11AM-4PM

DINNER: TUE. – THU. & SUN. 4-9PM | FRI. & SAT. 4-10PM

567 S. OCEAN AVE | PATCHOGUE, NY | 631-307-9999

WWW.SOUTHOCEANGRILL.COM

PERFORMING ARTS CENTER OF SUFFOLK COUNTY

BOARD OF DIRECTORS

Chair Diane Giattino
Vice-Chair Ken Searles
Secretary/Treasurer Gale Edwards

Directors Paul Allan,
Jim Martinsen, Lisa Meyer-Fertal,
Ann L. Nowak, Terry Tuthill

ADMINISTRATIVE

Executive Artistic Director Paul Allan
Director of Business Operations Jeff Bellante
HR/Payroll Gale Edwards
Director of Development/
Public Relations Scot Patrick Allan
Company Manager Anthony Bartonik
Guest Services Tim Cole
Marketing Director Dave Cohen
Asst Company Manager Kenny Eng

ARTISTIC STAFF

Associate Artistic Director/
Casting Director Michael Edward Baker
Director Keith Andrews
Associate Director/Choreographer Maria Torres
Music Director Andrew Haile Austin
Asst Casting Director Rachel Armitstead
Asst Choreographer Ruthy Inchaustegui
Lighting Designer Kim Hanson
Musical Contractor Peter Pece
Production Photographer Jeff Bellante

FACILITIES

Facilities & Concessions Manager ..Blake Armitstead
Cleaning Staff Jasper Bailey
House StaffDavid Bellante, Ralph Bianco
Matthew Fama, Meghan Fawcett,
Lauren Hersh, Joe Kraus, Aaron Legros,
Dominic Mondì, Tim Montick,
Alex Pardo, Danny Parr, Tyler Pegg,
Savanah Ruiz, Lukas Varacek
Grounds Maintenance . HTM Landscaping Company
General Counsel Ann L. Nowak

EDUCATION

Education Director Michael Baker
Acting School ManagerRachel Armitstead
Teaching Staff Elijah Coleman,
Michelle Cosentino, Joseph Minutillo,
Megan Minutillo, Madison Mulvey,
Rich Walker, Amy Woschnik
Accompanists Peter Pece, Anthony Vetere

PRODUCTION

Technical Director Brandon Cheney
Costume Shop Manager/
Costume Coordinator Joe Greene
Master ElectricianRiley Noble
Sound EngineerRyan Chapman
Prop Master Mitch Domer
Wig Master Timothy Williams
Video Programmers Geordy Van Es,
Brian McMullen
Asst Stage Manager Elise Jenkins
Asst Technical Director John-Paul Baker
Shop Foreman Michele Ponton
Scenic Charge Tracie VanLaw
Wardrobe Supervisor Bryanna Godell
Asst Master Electrician William Milligan
Costume Shop Assistant Rachel Allison
Carpenters Imani McCants,
Breanna McNeal, Louis Perrotta

APPRENTICES

Electrics Apprentice Jessica Cuoghi
Wardrobe Apprentice Zoe Brantley

INTERNS

Costume InternEmily Greene
Carpentry Interns Christian Paris,
Zachary Tarwater

BOX OFFICE

Box Office Manager/Group Sales Laurie Cole
House Manager/Group Sales Joanne Tambasco
Assistant House Manager Abby Beodeker
Box Office Staff Judy Bianco,
Cooper Cannizzaro, Janet Caponi,
Beth Harrison, Phyllis Kaye, Tina Realmuto



**Assisted Living
Memory Care**

VillageWalkSeniorLiving.com

**VILLAGE WALK**
A CARLISLE COMMUNITY
Managed by Life Care Services® 

GATEWAY SUMMER CONCERTS



JUNE 1 - 8PM
BEGINNINGS - THE ULTIMATE
CHICAGO TRIBUTE BAND



JULY 27 - 8PM
BEST OF
THE EAGLES



THEGATEWAY.ORG
631.286.1133

***See and hear videos of the
bands at thegateway.org.***



**Protecting Your Family & Business
Like It's Our Own**



PERSONAL

Personal Auto • Homeowners • Watercraft • Flood

COMMERCIAL

Commercial Auto • Contractors • Restaurants • Worker's Compensation
Real Estate • Business Insurance

ADDITIONAL PRODUCTS

Life • Wedding • Travel • Defensive Driver Courses • Bonds • Cyber Insurance • EPLI

16 Station Rd. Suite 7 • Bellport, NY 11713
twinforksinsurance.com • info@twinforksinsurance.com



CALL TODAY FOR A FREE QUOTE! • 631-224-1000



www.li-precast.com

631-286-0240

Swezey

FUEL CO., INC. - EST. 1919

**Suffolk's Largest Family
Owned Energy Company**

- Heating & Air Conditioning
- Automatic Oil Delivery Service
- 24-Hour Emergency Service
- Budget Plans that Pay You Interest
- Expert Installations of Boilers, Burners, Hot Water Heaters & Air Conditioning Equipment



475-0270

51 RIDER AVE., PATCHOGUE



IT'S IN THE DETAILS

**EXPERT AUTO
COLLISION REPAIRS**

ALL INSURANCE ACCEPTED



1791 MONTAUK HIGHWAY
BELLPORT, NY 11713

286-2116



Ruland
FUNERAL HOME, Inc.

*Proudly Supporting The Arts
That Enrich Our Lives*

475-0098

500 N. OCEAN AVE, PATCHOGUE NY 11772



open 6 days
tuesday-sunday
11:30am-2am

your neighborhood
restaurant & pub
est. 1986

late night
kitchen open
until 10pm

255 Blue Point Avenue
Blue Point 631-363-2666

OPEN TUESDAY-SUNDAY 11:30-2AM
LATE NIGHT KITCHEN OPEN UNTIL 10PM

cavanaughbluepoint.com

Find us on facebook



Lessons, Intro Flights, Sightseeing & Aero Camps



MID ISLAND FLIGHT SCHOOL
LI MacArthur Airport 631-588-5400
Brookhaven Airport 631-281-5400
www.midislandair.com



THE GREATER PATCHOGUE CHAMBER OF COMMERCE
VISIT PATCHOGUE.COM
FOR INFORMATION ON ALL THINGS PATCHOGUE!

CONTRIBUTE TO THE FUTURE OF THE ARTS

We invite you to lend your support and become a bigger part of our performing arts family.

- ★ **STAR BILLING**
\$25,000 +
- ★ **LEADING PLAYER**
\$15,000 +
- ★ **PRINCIPAL ROLE**
\$5,000 +
- ★ **DIRECTOR'S CIRCLE**
\$2,500 +
- ★ **FRONT ROW VIP**
\$1,000 +
- ★ **BACKSTAGE PASS**
\$500 +
- ★ **CAST MEMBER**
\$250 +
- ★ **STAGE HAND**
\$100 +
- ★ **FAN CLUB**
\$50 +

GO TO THEGATEWAY.ORG AND CLICK ON SUPPORT OR CALL (631) 286-7027 FOR MORE INFORMATION

The Performing Arts Center of Suffolk County is a 501(c)3 non-profit organization – all donations are 100% tax-deductible. Thank you for your contribution to the future of the arts!

To adjust the way your name is listed here, please email Scot@TheGateway.org or call **631-286-7027**.

BOARD MEMBERS

Paul Allan
Gale Edwards
Diane Giattino
Frank Lento
Jim Martinsen
Lisa Meyer-Fertal
Ann Nowak
Ken Searles

STAR BILLING

Ingird Arneberg
County of Suffolk
The Knapp Swezey Foundation
AARP
The Dooner-Rockwell
Charitable Trust

LEADING PLAYER

The Kana Family
County of Suffolk Cultural Arts

PRINCIPAL ROLE

Boykin Curry
Thomas Gavin
Cecile Defforey
New York State Council
on the Arts

DIRECTOR'S CIRCLE

Cullen and Danowski, LLP
Maggio Environmental, LLC
Frank and Ginny Palamara
William J. Oneill Sales
Exchange, Inc.

FRONT ROW VIP

Susan Belcher
HSBC Bank
South Country Lions Club
Cheryl A. Felice and
Lorraine Kuehn
Firoi Enterprises Inc.
Flanzer Construction
Judy Fortuna-Ince and Peter Ince
Phil and Debbie Grucci
Dave and Debbie Morrissey
Phylis Natoli and
Debbie-Ann Chang
William J. O'Neill Sales
Exchange Co., Inc

Isabella Rossellini
Selma Rothstein
Cathy and Ken Weiss
Frank and Marie Trotta

BACKSTAGE PASS

Teresa Abramowski and
Everett Och
Myrna Basile
Susan Benincasa
Donald Bernstein
Alison Buck and Rob Wegener
Barry Buckland
Estella and Robert Clasen
Ellen Clyne
Thomas and Sara Jane Corwin
John Shea Jr. and Diane Crean
John and Erna Cuenin
Gloria Cummings
Dohn Dacey
Jeff Davies and Michael Mizrahi
Charles and Linda DesJardin
Kenneth Gobright
Steve Hayden and Kristy Allen
Judy Fortuna-Ince
and Peter Ince
Susan Kahl and Jim Vaughan
Vincent and Linda Leuzzi
Ann Marie and Gary Loesch
Gloria Mancuso and
Glenn Dielmann
Roe Agency
Joe and Tricia Manno
Glenn and Louise Mehrstens
Steve Mercurio
Lisa and George Meyer-Fertal
Michael and Hwasoon Mullaney
Catherine Oberg
Laura Orofino
The Sparklers
Maria Pierce
Patricia Polak
Karen Ritter
Jean-Marie and Selima Salaun
Brian Smith
George and Robin Smith
Judith Steinberg
Bill Stonehouse
Candace Leeds and
Jay H. Tanenbaum
Jay Tanenbaum
David Tobachnik and

Alice Ann Humphrey
Maureen Veitch

CAST MEMBER

Teresa Abramowski and
Everett Och
John and Connie Albin
Bill Allan
and Mary Lou Maloney
Luke and Elise Allen
Jimmy and Nancy Avino
Jo Bennett
Dr. and Mrs. Chantal and
Richard Berman
John and Loree Bowcock
Steve and Kate Browning
Alexsandra Buckner
Robert Budd
Lynn Burnett
Dr. Kym Carpentieri and
Mr. Mike Eller
Bob and Pat Chieffo
Joe and
Shana Conza Thomas
and Sara Jane Corwin
Susan Coseglia
The Cotter Family
Mary Jane and Brian Cullen
Gloria Cummings
Rich and Kathy Dallin
Dawn and Nikki DeMatteo
Thomas Derby
Dennis and Kathy Desmond
Alexandra Diamond
Susan Duggan
Marc Eron
Bob and Donna Esp
Ken and Tami Fehling
Anna Lou Fletcher
Fran and Laurie Fosmire
Joe Franco
Mike and Pat Garofola
Michael and Dara Gary
Mary Giattino
Ada Graham
Ed Graziano
and Doug Carabe
Johnny Devito
and Nick Gumas
Judith Hope
John Hulse

Joey and Merri Italiano
Susan Kahl and Jim Vaughan
Bob Koenig
Peggy Kulakowski
Harris Lefkon
Jeffrey Leibowitz,
Atlantic Agency Insurance
and Risk Management
Mr. Jeffrey Leibowitz
Carol and Gordon Lenz
Ann Marie and Gary Loesch
Jane Love
Margie K Ludewig
Christopher and
Dorothea Maloney
Lisa and
George Meyer-Fertal
Nancy Duncan and
Jamie Moog
Craig Morrison
Jack Moter and Jane Graham
Heather Mylonas
Renee Negron
Jamie and Mandi Neville
Mandi Neville
Susan Newton
Meredith Bain
and Eugene Nifenecker
Bob and Kathe Palermo
Kim Poppiti
June Potter
Ann and Bob Quinn
Sandy Reifel
Kevin Rienecker
Billy Rignola
Barbara and Eric Russo
and Family
Jean-Marie and
Selima Salaun
Ray Schiemel
Ray and Susan Schiemel
Laura Soper
Brett Steinberg
Judith Steinberg
Virginia Stone
Kelly Summers
Krista Svedberg
Janet and John Taylor
Joseph and
Patricia Van De Wetering
Fred and Marna Varenny

Virginia Waterman
Allen and Angela Welcome
Laura Zinnati

STAGE HAND

Steven and Madelon Alter
Susan Benincasa
Estella and Robert Clasen
Mary Lou Cohalan
Kathy and Tom Cullen
Nick and Julia Fasano
Katie Ford-Mehrken
Samara & Allene Goldberg
Joyce Hanly
Timothy and Laura Hawryluk
Jean Hebllich
DiGrace Hoiland
Richard Hoshino
Robert K. Irish
Janice F. Klein
Susanna Klein
Janice F. Klein
Vasili Kreatsoulas
William Vasili Kreatsoulas
Marilyn Hamilton and
Joseph LaGennusa
Vincent and Linda Leuzzi
Ann Lucas
Gail Mancuso
Mr. and Mrs. R. Mazzella
J. Signs Inc.
Jerome Morello
Emily Morton
Suzanne Niemeyer
Kevin and Joy O'Brien
Jeanette Paolillo
Lynn and Joe Pessalano
Paul Pohorelec
Jean Pokorny
Edwin and Joan Schultheis
Stephanie Schurmann
Patricia Sikorski
Donald Steckler
Judith Steinberg
Janet Tatum
Laura Terwilliger
Susan and Magnus Thorstenn
Lorelei Tuthill
George and Nancy Tvelia

FAN CLUB

Leonard and Eileen Astrin
Bisagni Family
Maureen Campanelli
June Cardenas
Shelley Case
Margaret Culhane
Kathie Davis
Wendy and Roy Erlandson
Patricia Flynn
Mr. and Mrs. Philip Gambino
Joseph and
Maryellen Gathard
Jean Hebllich
Kathy Scheverman and
Friends
PK Hopkins
Susan Karas
Joan Didio Kinsella
David and
Peggy Kulakowski
Connie Lipnicki
Susan Masciello
Mr. and Mrs. Daniel G.
McConnell
John E. Morris
Emily Morton
Mrs. Marilyn Munson
Barbara Navetta
Richard and
Ruth Anne Otterstedt
Dr. Mary Koslap-Petraco
Mary Petraco
Andrew and Jennifer Setzer
Mary Ellen Smith
Richard and
Denise Strothman
Patricia Tarasenko
Irwin and Susan Wein
William and
Janet Wrobleksi
Chuck and Karen Zahradka

***Listed names reflect
2019 FY donations**



O'NEILL'S
— SALES EXCHANGE —

Fine Jewelry and Watches • Short Term Collateral Loans
Expert Jewelry Repair and Design



1 EAST MAIN ST. PATCHOGUE, NY 11772
631-280-0800

VISIT US ON
Wojonwills.com



ROE AGENCY INC.

*Over A Century of Commitment
Since 1898*

ALL FORMS OF INSURANCE

PERSONAL & COMMERCIAL

Call us for a quote!

125 East Main St., Patchogue, NY 11772
p: 631.475.4000 f: 631.475.7648

THANK YOU TO OUR USHER GROUP 2019

Carmela Aiosa, Missy Atchue, Cheryl Becker, Cecilia Beda, Violet Bezler, Camille Brideson, Marie Chineia, Suzette Ciminelli, Lorrie Clifford, Mary Lou Cohalan, Nancy Connolly, Mario D'Amore, Melissa Donovan-Foglia, Pat Ely, Betty Entress, Kristina Farmer, Jim Ficker, Patti Ficker, Linda Gaimaro, Kaitlyn Gambina, Joyce Gambina, Lou Giudice, Linda Good, Sue Greenleaf, Connie Gulotti, Susan Hersh, Barbara Keup, Bob Koenig, Mary Lanier, Diane Lovizio, Eileen Maida, Bea Marelli, Connie Merced, Emma Miele, Sue Nemet, Judy Onorato, Linda Okolowich, Celmira Pachon, Cathy Pernice, Pete Pernice, Linda Randolph, Annette Reeve, Sandy Reifel, Pat Santalone, Harold Schiffman, Olivia Schilling, Steven Schilling, Cathy Steinkraus, Diane Warren, Joe Warren.



They have questions. We have answers.

And with more than 180 pediatric specialists at Stony Brook Children's Hospital, we also have the unique ability to treat even the most difficult health needs of your child, all in a kid-friendly environment made just for them.

Part of Stony Brook Medicine | stonybrookchildrens.org



Stony Brook
Children's

The best ideas in medicine for kids.

We treat boxers and ballerinas.



Location courtesy of Ovation Dance Studios.

We've served this richly diverse region as a community hospital for more than 60 years. And as the area has grown, so have we. But as Long Island doctors, nurses, and healthcare professionals, we've never outgrown our devotion to the health of the community we all call home.

That commitment can be seen in the Knapp Cardiac Care Center, a new surgical pavilion, our level III trauma center, our women's imaging, breast health, orthopedics, bariatrics, and so much more.

So while we've updated our brand to represent our growth, our quality improvements and the patient-first changes we've made, there is one thing that will never change: Our commitment to make you feel as comfortable in our home as you do in your own.

Your community. Your hospital.
LICommunityHospital.org

**Long Island
Community Hospital**

101 Hospital Rd, Patchogue, NY 11772 • 1.800.694.2440