

**THE** *Gateway*  
PERFORMING ARTS CENTER OF SUFFOLK COUNTY

NEW YORK, NEW YORK, IT'S A HELLUVA TOWN!

# ON THE TOWN



## A Healthy Heartbeat



## A healthy heartbeat is our favorite song.

**NOTHING SOUNDS BETTER THAN A HEALTHY HEART.** But when a heart develops an arrhythmia, causing it to beat too weakly, too fast or just irregularly, it can cause more than discord. It can endanger your life. That's why the electrophysiologists at the Stony Brook Heart Rhythm Center use the most advanced 3D mapping technology to locate the precise heart tissue causing the problem. So our team can perform accurate ablation procedures on even the most complex arrhythmias. And your heart can sound like music to your ears.

For more ideas, visit  
[hearhythm.stonybrookmedicine.edu](http://hearhythm.stonybrookmedicine.edu)



**Stony Brook Heart Institute**

The best ideas in medicine.



**PAINTERS'**  
Restaurant

*Join us for*  
**BRUNCH LUNCH DINNER**

.....  
Serving Brunch Saturday & Sunday  
11am - 4pm

.....  
**416 SOUTH COUNTRY ROAD  
BROOKHAVEN, NY 11919**

**2 MILES EAST OF GATEWAY PLAYHOUSE**  
*make your reservations*

**631-803-8593**



# Soar Into View

Aerial Photography and Videography



631 345 2202 :: [WWW.SEARLESGRAPHICS.COM](http://WWW.SEARLESGRAPHICS.COM) :: EST.1974





## NYC, Charters, Tours, & More!

Hampton Jitney offers year-round daily motorcoach service between Long Island's East End (the Hamptons and North Fork) and New York City. Board one of our luxurious motorcoaches and our experienced drivers will deliver you to your destination safely and on time!

In addition to our regulary scheduled service, Hampton Jitney offers:

**Charter Services, Guided Tours of the Hamptons,  
Weekend Getaways throughout the eastern seaboard,  
Show and Casino Tours,  
Limousine and Sedan Service,  
as well as NASCAR Race Tours, Overnight Excursions  
and much more!**



631.283.4600 | 212.362.8400 | [www.hamptonjitney.com](http://www.hamptonjitney.com)

# *Sponsor a Seat* at Gateway Playhouse



2016 saw the renovation of The Gateway's new exterior patio. To continue the progress in 2017, we invite you to be a part of our future...

Contribute to our  
*Beautification Campaign*  
and sponsor a seat plaque  
in our beautiful theater.

**Be a part of our legacy!**

\$250 per seat or \$500 for front 3 VIP rows.

**Call Scot (631) 286-7027**



Real Possibilities is a trademark of AARP.

# DISCOVER REAL POSSIBILITIES ACROSS LONG ISLAND.

From Mineola to Montauk, AARP is working on issues important to you and your family so you can get the most out of life. It's why we're connecting with you at fun, free events like movie screenings, financial seminars and fraud prevention workshops. You can even connect with others at discounted theater performances and at select sporting events.

Learn more and get to know us by calling **866-227-7442** or visit **[aarp.org/longisland](http://aarp.org/longisland)**





«URBAN DANCES, DARING STUNTS,  
AND DAZZLING ACROBATS »

# CIRQUE ELOIZE



Directed by  
**Jeannot Painchaud**

*August 9-13*

at Patchogue Theatre

Youth ages 5-16 get 50% Off Tickets to Cirque iD

*Sponsored By:* LONG ISLAND  
**PULSE**





*Presents*

# ON THE TOWN

**Music by**

**LEONARD BERNSTEIN**

**Book and Lyrics by**

**BETTY COMDEN and ADOLPH GREEN**

**Based on an Idea by**

**JEROME ROBBINS**

*Starring*

**NICK ADAMS**

*Featuring*

**SEAN EWING**

**DANIEL SWITZER**

**AMANDA HIGGINS**

**LEXI LYRIC**

**VIRGINIA PRESTON**

*With*

**MYCHAL PHILLIPS ANDY REDEKER MARY STOUT**

**RICHARD BIGLIA NICK CAYCE MONICA CIOFFI KEVIN PAUL CLARK BARRETT DAVIS DORIAN FELEPPA  
KIMBER HAMPTON AKINA KITAZAWA RYAN KOERBER JESSICA LAWYER KATIE MITCHELL ALICIA NEWCOME  
BRIAN RAY NORRIS DYLAN COLE PASSMAN ERIC RIVAS MICHAEL SANTORA THOMAS SUTTER  
HANNAH CREWS EVE DANZIGER MATTHEW FAMA AIDAN PASSARO**

**Executive Artistic Director**

**PAUL ALLAN**

**Director of Business Operations**

**JEFF BELLANTE**

**Production Manager**

**BRIAN LOESCH**

**Company Manager**

**AUBREY KYLER**

**Casting Director**

**MICHAEL BAKER**

**Production Stage Manager**

**JOHN "JP" POLLARD**

**Director of Development**

**SCOT ALLAN**

**Scenic Designer**

**MICHAEL BOYER**

**Costume Provided by**

**COSTUME WORLD  
THEATRICAL**

**Lighting Designer**

**MARCIA MADEIRA**

**Musical Director**

**JEFFREY BUCHSBAUM**

**Associate Director/Choreographer**

**BARRETT DAVIS**

**Director/Choreographer**

**SCOTT THOMPSON**

Costumes provided by COSTUME WORLD THEATRICAL, Deerfield Beach, FL. [www.costumeworld.com](http://www.costumeworld.com)

On The Town is presented by arrangement with Tams-Witmark Music Library, Inc., 560 Lexington Avenue, New York, New York 10022

GATEWAY PLAYHOUSE

## Cast of Characters

Gabey.....	Nick Adams*
Ozzie.....	Sean Ewing*
Chip.....	Daniel Switzer*
Ivy.....	Virginia Preston*
Hildy.....	Lexi Lyric
Claire De Loone.....	Amanda Higgins
Lucy Schmeeler.....	Mychal Phillips
Judge Pitkin.....	Andy Redeker*
Madame Dilly.....	Mary Stout*
Figment/Uperman/Rajah Bimmy/Emcee.....	Brian Ray Norris*
Delores Delores/Diana Dream.....	Katie Mitchell*
Ensemble.....	Richard Biglia, Nick Cayce, Monica Cioffi, Kevin Paul Clark Barrett Davis*, Dorian Feleppa, Kimber Hampton, Akina Kitazawa, Ryan Koerber Jessica Lawyer, Katie Mitchell*, Alicia Newcom, Brian Ray Norris*, Dylan Cole Passman* Eric Rivas*, Michael Santora, and Thomas Sutter
Youth Ensemble.....	Hannah Crews, Eve Danziger, Matthew Fama and Aidan Passaro
Production Stage Manager.....	John "JP" Pollard*
Dance Captain.....	Barrett Davis*

## Understudies

Gabey (Scenes).....	Nick Cayce
Gabey (Ballet).....	Dylan Cole Passman*
Ozzie.....	Eric Rivas*
Chip.....	Barrett Davis*
Ivy (Scenes).....	Alicia Newcom
Ivy (Ballet).....	Akina Kitazawa
Hildy.....	Jessica Lawyer
Judge Pitkin.....	Michael Edward Baker*
Madame Dilly.....	Aubrey Kyler
Figment/Uperman/Rajah Bimmy/Emcee.....	Michael Edward Baker*
Delores Delores/Diana Dream.....	Aubrey Kyler
Male Ensemble.....	Ryan Koerber

## Orchestra

Music Director/Keyboard.....	Jeffrey Buchsbaum
Keyboard 2.....	Hosun Moon
Keyboard 3.....	Sean Cameron
Reed 1.....	Mitch Kamen
Reed 2.....	Michael Kendrot
Trumpet.....	Charlie Clausen
Trombone.....	Peter Isaac
Bass.....	Ross Kratter
Drums.....	Pete Desalvo
Violin.....	Amanda Mohr



\*Actors employed in this production are members of Actors' Equity Association, the union of Professional Actors and Stage Managers in the United States.



The Musicians employed in this production are members of the American Federation of Musicians.



The Director/Choreographer is a member of the Society of Stage Directors and Choreographers, Inc., an independent national labor union.

THE BRISTAL ASSISTED LIVING • WHERE EVERY DAY MEANS MORE®

# EXPERIENCE THE DIFFERENCE EXPERIENCE THE BRISTAL



**Photos:** Bistro, The Bristal at Holtsville; Dining Room & Game Room, The Bristal at Sayville

*The*  
**Bristal**  
ASSISTED LIVING

**Call Us Today to Schedule Your Visit**

HOLTSVILLE | 5535 Expressway Drive North | (631) 828.3600

SAYVILLE | 129 Lakeland Avenue | (631) 563.1160

[thebristal.com](http://thebristal.com)



Licensed by the New York State Dept of Health • Eligible for Most Long Term Care Policies  
Equal Housing Opportunity • Quality Communities by The Engel Burman Group



# MUSICAL NUMBERS

## ACT I

"Star Spangled Banner" .....	Orchestra
"I Feel Like I'm Not Out of Bed Yet" .....	Workmen and Men's Quartet
"New York, New York" .....	Ozzie, Chip, Gabey
"Gabey's Comin'" .....	Ozzie, Chip, Gabey, Women's Chorus
"Presentation of Miss Turnstiles" .....	Announcer, Ivy Smith
"Come Up to My Place" .....	Hildy, Chip
"Carried Away" .....	Claire, Ozzie
"Lonely Town" .....	Gabey
"Carnegie Hall Pavane" .....	Ivy, Madame Dilly, Women's Chorus
"Carried Away Reprise" .....	Claire, Ozzie
"I Can Cook Too" .....	Hildy
"Lucky to Be Me" .....	Gabey, Chorus
Times Square Ballet .....	Company

## 15 MINUTE INTERMISSION

## ACT II

Entr'Acte .....	Orchestra
"So Long, Baby" .....	Diamond Eddie's Girls
"I Wish I Was Dead" .....	Diana Dream
"I Wish I Was Dead (Spanish)" .....	Dolores Dolores
"Ya Got Me" .....	Hildy, Claire, Ozzie, Chip
"I Understand" .....	Judge Pitkin
"Coney Island Ballet" .....	Ivy, Gabey, Male and Female Ensemble
"Some Other Time" .....	Claire, Hildy, Chip, Ozzie
"The Real Coney Island" .....	Rajah Bimmy
Finale .....	Company



# FROM THE BIG APPLE TO THE WORLD'S BEST BEACHES



*Many Success Stories.  
One Bank.*



Member FDIC

With an expanded branch network from Montauk to Manhattan, count on Bridgehampton National Bank whether you're growing your business in the city . . . or putting down roots on the East End. No wonder BNB is one of New York's fastest growing community banks. Isn't it time we became yours?

COMMUNITY BANKING FROM MONTAUK TO MANHATTAN  
631.537.1000 | BRIDGENB.COM



Saturday, July 29<sup>th</sup>  
**BELLPORT DAY – 11AM-4PM**

Saturday, September 2<sup>nd</sup>  
**SIDEWALK SALE**

Saturday, October 28<sup>th</sup>  
**HALLOWEEN PARADE – 12PM-1PM**



Saturday, November 25<sup>th</sup>  
**SHOP SMALL SATURDAY &  
SOUP CONTEST – 12PM-2PM**

Saturday, December 2<sup>nd</sup>  
**BELLPORT VILLAGE TREE LIGHTING – 6PM**



# DISCOVER Historic BELLPORT

Check out our *New Website!*  
[www.bellportchamberofcommerce.com](http://www.bellportchamberofcommerce.com)  
for more information and added events!



## THE BELLPORT

Steps away from the Gateway Playhouse

★★★★

New York Times Review

159 South Country Road, Bellport, New York 11713

(631) 286-7550 | [www.bellport.com/thebellport](http://www.bellport.com/thebellport)



**RICE REALTY  
GROUP**

**RESIDENTIAL • COMMERCIAL  
SALES & RENTALS**

Tel: (631) 624-1200

117 South Country Rd. | Bellport Village  
[ricerealty1.com](http://ricerealty1.com) | [@bellportrice](https://www.instagram.com/bellportrice)



*Celebrating over 33 years  
of business, since 1984*



*An Established  
Tradition of Service*

322 S. Country Rd., East Patchogue  
(631) 289-5550 | [www.swanproperties.com](http://www.swanproperties.com)

## DON'T LET PAIN Interfere With Your Life!



DR. JOSEPH R. MERCKLING

Providing Relief for: Neck and Back  
Pain | Headaches | TMJ Pain  
As seen on News 12 Long Island for  
Pregnancy Related Back Pain

**Merckling Family Chiropractic, P.C.**  
16 Station Road, Suite 2, Bellport Village  
**631-286-2300 | [www.mercklingdc.com](http://www.mercklingdc.com)**



[www.papanickspizzeria.com](http://www.papanickspizzeria.com)

Home of the Crispy Crust • Daily Specials

**631-286-6400**

117C South Country Road | Bellport Village

**playcrafters**  
THEATRE COMPANY



Fall 2017 **Readers Theatre**  
Winter 2018 **Other Desert Cities**  
Spring 2018 **Moon Over Buffalo**

[www.bellport-playcrafters.com](http://www.bellport-playcrafters.com)  
(631) 748-7863



GIFTS • HOME DECOR • CHILDREN'S DEPARTMENT

120 S. COUNTRY RD. • BELLPORT • 631-803-8790

WWW.REDBENCHGIFTS.COM

## Bellport Arts & FRAMING STUDIO

Get those photos off your PHONE!!!  
We'll print them ANY SIZE!

CUSTOM PICTURE FRAMING  
Stationery | Fine Art Restoration

137 South Country Rd., Bellport, NY • 631.803.6076



CLOTHING, JEWELRY & GIFTS

136 S. Country Road, Bellport  
Harbor Walk, Fire Island Pines  
tolanewyork@gmail.com • FEEL THE LOVE. @tolanewyork

# YOUR AD HERE

ADVERTISE IN THE NEXT GATEWAY PLAYBILL  
VISIT [WWW.GATEWAYPLAYBILL.COM](http://WWW.GATEWAYPLAYBILL.COM)  
OR CALL 631.345.2202 AND  
RESERVE YOUR AD SPACE TODAY!



## MVPAUTOMOTIVE

WE PROUDLY SUPPORT *The Gateway*



## 2 LOCATIONS! BELLPORT & BROOKHAVEN

152 SOUTH COUNTRY RD, BELLPORT 631.776.1010

2515 MONTAUK HWY, BROOKHAVEN 631.803.8778

INSPECTIONS ■ CHECK ENGINE LIGHTS ■ EXHAUSTS ■ OIL CHANGES ■ TUNE-UPS  
BRAKES ■ TIRES ■ DEALER SERVICES & SO MUCH MORE...

[www.mvpautomotive.com](http://www.mvpautomotive.com)

Complete Auto Care for Foreign & Domestic Vehicles







**NICK ADAMS** (*Gabey*) originated and starred as Adam/Felicia in the Tony winning Broadway musical *Priscilla Queen of the Desert* (Two Broadway Audience Choice Awards, American Theater Hall of Fame Honoree, Astaire Award nominee) and was the final actor to star as Fiyero in the First National Tour of *Wicked*. Other Broadway: *A Chorus Line* (Larry), *Guys and Dolls*, *Chicago* (Mary Sunshine standby), *La Cage Aux Folles* (2010 Tony Winning Revival), and *The Pirate Queen*. TV/Film: *Sex and the City 2*, *An Englishman in New York*, "Smash," "As the World Turns," "Guiding Light," "Dancing with the Stars," "Rosie Live," "It Could Be Worse," "The Kennedy Center Honors," "Regis and Kelly," "Good Morning America," "The View," "The Macy's Thanksgiving Day Parade," "Best Time Ever," multiple telecasts of "The Tony Awards," and Keith on season two of "Go-Go Boy Interrupted." BFA Boston Conservatory @ thenickadams



**RICHARD BIGLIA** (*Ensemble*) is originally from Brazil and he is thrilled to join Gateway's cast of *On The Town*. Off-Broadway credits include *Anything Goes* (*Ensemble*). Regional Credits include *Dirty Rotten Scoundrels* (*Ensemble*), and *Peter Pan* (Pirate/Indian). Brazilian credits include *Spring Awakening* (Hanschen Rilow) and *Verdi's Aida* (Slave/Dance Ensemble). A huge thanks to my mother Leura for all of her love and support. [www.richardbiglia.com](http://www.richardbiglia.com)



**NICK CAYCE** (*Ensemble*) is thrilled to be returning to Gateway and joining this HELLUVA cast! National tours: *Elf the Musical*. Regional: R&H's *Cinderella* (Gateway Playhouse), *The Music Man* (Cape Playhouse), *Cats* (Mistoffelees.) Cruise ships: *Hairspray* (Royal Caribbean.) Dance Companies: Alabama Ballet, Nashville Ballet II. BFA, Point Park University. Many thanks to Gateway, the creatives and my amazing friends and family!

# Who's Who



**MONICA CIOFFI** (*Ensemble*) is so excited to be making her regional theater debut at Gateway Playhouse! Various workshops: *For Madmen Only*, *Dance, Dance, Dance: Heartbeat!*, *Quadratic*. Westchester Ballet Company soloist roles: *The Nutcracker*, *Pas de Quatre*, *Peter and the Wolf*, *La Bayadere* among others. TV/Film: *Real Housewives of NY*, "Because I Love You" (short), *Long Island Love Story* (feature). Many thanks to Mom, Dad, Brian and Nick as well as Lucille! [www.moniacioffi.com](http://www.moniacioffi.com)



**KEVIN PAUL CLARK** (*Ensemble*) Gateway Playhouse Debut! National Tour: Disney's *Beauty and the Beast* (Swing, Assistant Dance Captain). Regional includes Portland Center Stage and Merry Go Round Playhouse. Company member alum of Nevada Ballet Theatre. Gratitude to Scott and Barrett. Love to SFH! For mom.



**HANNAH CREWS** (*Youth Ensemble*) is 17 years old and is thrilled to be in her fourth Gateway production! Previous productions: *Holiday Spectacular On Ice!* ("Where Are You Christmas" Soloist), *Peter Pan* (title role), *Shrek Jr.* (Mama Ogre). Other credits: R&H *Cinderella* (Roger Rees Award Nom. and IAC Teeny Award Scholarship Winner), *The Little Mermaid* (IAC Teeny Nom.). Special thanks to her supportive family, the Gateway Acting School, Kelley Nassief Voice Studio, Seiskaya Ballet, and especially to Michael Baker for this opportunity and so many others. For Robin Joy Allan. Hannah will be attending the University of Southern California in the fall for a BA in Acting and Musical Theatre.

**WARNING:** The photographing or sound recording of any performance is strictly prohibited.

**FIRE NOTICE:** The exit indicated by a red light and sign nearest to the seat you occupy, is the shortest route to the outside. In the event of fire or other emergency, please do NOT run. WALK to that Exit. However, under normal circumstances, when leaving the Theatre, use the center rear exits. SMOKING is prohibited in the BUILDING, as required by the Suffolk County NO SMOKING Ordinance. Smoking in any area designated "No Smoking" renders the offenders subject to a fine, or imprisonment, or both.



# PORTERS

*on the lane*

COCKTAILS  RESTAURANT  CATERING



FOR RESERVATIONS *or* MORE INFO CONTACT US

phone ✱ 631—803—6067

email ⚓ [portersbellport@aol.com](mailto:portersbellport@aol.com)

NEW MENUS - SPECIALS - MUSIC - UPCOMING EVENTS

SUMMER HOURS *AND* MORE VISIT ...

website ⚓ [www.portersonthelane.com](http://www.portersonthelane.com)

Address - 19 Bellport Lane Bellport Village NY 11713

**SOMETHING SWEET FROM ACROSS THE STREET**



*Carla Marla's*

ICE CREAM PARLOR & CANDY SHOP



one free topping w/ this coupon

CALL: 631-803-6630

email: [carlamarlas@hotmail.com](mailto:carlamarlas@hotmail.com)

8 BELLPORT LANE, BELLPORT VILLAGE, NY 11713



**EVE DANZIGER** (*Youth Ensemble*) is incredibly excited to join the cast of *On The Town*. She has previously performed at the Gateway with the children's ensemble in the 2016 *Holiday Spectacular on Ice*, and also as a munchkin in *The Wizard of Oz Young Performer's Edition*. She is a student at the Gateway School for the Performing Arts, most recently starring as Alice in the school's *Alice in Wonderland* production class. She will also be playing Ladahlord in *James and the Giant Peach* with Kids For Kids Productions in Oakdale, NY. She would like to thank her parents, her sister Autumn, and the Gateway for all their support in pursuing her dreams.



**BARRETT DAVIS** (*Ensemble/Dance Captain*) Gateway Playhouse debut! Barrett was most recently seen in NYC Opera's production of *Candide* directed by Hal Prince. Broadway: *Mary Poppins* (Robertson Ay/Dance Captain). Other favorite regional productions: *The Music Man* (Tommy Dijas), *The Secret Garden* (Dickon), *Bye Bye Birdie* (Hugo Peabody), & *Woyzeck* (Barker, Doctor, Pawn Broker). BFA from Carnegie Mellon University (College & University Honors, Charles Willard Memorial Award.) Barrett would like to thank Scott, Paul, and Michael for this wonderful opportunity!



**SEAN EWING** (*Ozzie*) Thrilled to be making his Gateway debut! Broadway: *West Side Story Revival*, *Amazing Grace*. New York: *Encores!*: *Fanny, Zorba*. New York Philharmonics Company with Patti Lupone. Regional: Received a Helen Hayes nomination for his portrayal of Bernardo in Signature's *West Side Story*. Multiple companies of Susan Stroman's *Contact*, *Avenue X*. Thank you to my saving graces at CGF. And much love to my Mom, Dad, Sis friends and family for their endless love and support. @seanrewing

**NOTICE ABOUT PARKING:** We strongly encourage our patrons to always park on Gateway grounds. Parking is not allowed on Maplewood Drive north of the back Gateway exit. Parking is also prohibited on the east side of the street (Gateway side). Observe the No Parking signs. The Village of Bellport has advised us that cars parked in these areas will be ticketed. Please park on the west side of the street, opposite the Gateway fence, between the back exit and South Country Road. We appreciate your cooperation in making your visit to Gateway as pleasant as possible.

# Who's Who



**MATTHEW FAMA** (*Youth Ensemble*) is thrilled to be making his Gateway Main stage debut. Matthew has recently graduated from Babylon High School, and will be attending L.I.U. Post this fall to further his studies in Musical Performance. Some of his favorite credits, both in high school and local theaters, include Hines in *The Pajama Game* (BACCA Teen Theatre Award Winner), Lumiere in *Beauty And The Beast*, Grandpa Vanderhof in *You Can't Take It With You*, Rev. Shaw in *Footloose*, King Triton in *The Little Mermaid*, Cinderella's Prince in *Into The Woods*, and Javert in *Les Misérables*. Matthew would like to thank his Mom, Dad, Allison, Aunt Maria, Grandma, and Grandpa for their constant love, support, and chauffeuring. Special thank you to Micahel Baker for all his training and for giving him this extraordinary opportunity. Enjoy the show!



**DORIAN FELEPPA** (*Ensemble*) a Long Island native, athlete and MMA. Studied at Long Island Dance Academy. Certified in Fitness Nutrition for twenty years she's been a Personal Trainer from ISSA and DSW. Masters in Secondary Ed from Dowling College, minor in Sociology, Bachelors of Technology in Visual Communications from Farmingdale State University. Enjoyed doing background work for *Gossip Girl*, *When In Rome*, *Fighting*, *Ghost Town*. Special thanks to Michael Baker without him she would not be here today. He has encouraged her to go further than she's ever thought. She's thrilled to be part of *On The Town* at the Gateway.



**KIMBER HAMPTON** (*Ensemble*) is thrilled to be a part of *On The Town* and the Gateway Playhouse family! Favorite credits include; *Funny Girl* (North Shore Music Theatre), *Sugar Babies* (NY Workshop), *Will Rogers Follies* (Arrow Rock Lyceum), Holland America & Carnival Cruise Lines, Spirit Productions, and *Sesame Street Live* (National/International tour). Endless gratitude to Scott and the entire Gateway team! Loads of love & thanks to God, my family, and beloved husband! Grandpa - this one's for you!

---

NOW ACCEPTING MEMBERS FOR THE

# 2017 SEASON

---



## BELLPORT GOLF CLUB

20 South Country Road | Bellport, New York 11713 | 631-286-7206 | [jimmy@bellportgolfclub.com](mailto:jimmy@bellportgolfclub.com)  
[www.bellportgolfclub.com](http://www.bellportgolfclub.com)



**AMANDA HIGGINS** (*Claire de Loone*) is thrilled to be joining the Gateway family! With origins in NC, she proudly received her BFA as an ECU pirate. Favorite credits include *In the Mood* (nat'l tour), *Kiss Me, Kate!* (Kate/Lilli), *Return to the Forbidden Planet* (Gloria), and *The Great God Brown* (Cybel). Film: *Through a Class Darkly*. Amanda is also a budding writer/composer and hosts a new YouTube/Instagram series called #acapellaFridays. She owes her greatest thanks to God and to her loving parents. Follow: @higginsinreallife



**AKINA KITAZAWA** (*Ensemble*) Recently seen in Gateway's *Swing!* She was born and raised in Tokyo, where she won the prestigious NBA All Japan Ballet competition. After coming to America via the Steps on Broadway International Student Program she performed as a dancer with the Cecilia Marta Dance Company. Akina then served as the dance captain for *Carnival!* in Austin, Texas directed by Scott Thomson and performed in *Broadway on the Hudson* and in *American Showstoppers* with the Fred Barton Orchestra multiple times.



**RYAN KOERBER** (*Ensemble*) is overjoyed to return to The Gateway! NYC: *Nederlander Tribute* and *Jimmy Awards* (Minskoff Theatre), *Parade* (Lincoln Center). Regional: *Thoroughly Modern Millie* (Engeman Theatre), *Beauty and the Beast* and *Singin' in the Rain* (Gateway). TV/Film: *Fan Girl* (ABC Family/Netflix), "Shadow of Doubt" (Investigation Discovery). Up next, Ryan is heading to Theatre By The Sea for *The Producers!* Current BFA Musical Theatre student at Montclair State University. Thanks to the entire Gateway family! For Ricky. www.Ryan-Koerber.com



**JESSICA LAWYER** (*Ensemble*) Jessie Lawyer could not be more proud to make her Gateway debut and share the stage with this cast of amazing friends! Regional credits include: *Annie Get Your Gun*, *Addams Family*, *Wizard of Oz* (Fulton Theatre) *Footloose*, *Seven Brides for Seven Brothers* (MSMT) *West Side Story* (HLTC, STONC) *Legally Blonde* (Norwegian Cruise Line) and various hip hop and ballet companies throughout New York! Thank you so much to Scott Thompson, Lucille Dicampli, and my beautiful family for their unconditional

# Who's Who

support in doing what I love to do. Have a "helluva" good time! [www.jessicalawyer.com](http://www.jessicalawyer.com)



**LEXI LYRIC** (*Hildy*) is jazzed to be returning to THE Gateway!! Regional: *The Full Monty* (Estelle, Georgie U/S \*Perf) John W. Engeman Theatre, premiere of *The Hunchback of Notre*

*Dame* (Ogunquit Playhouse), premiere of *Sister Act!* (Ogunquit and Gateway Playhouse), *Sister Act!* (Fulton Theatre), *A Christmas Carol* (Drury Lane Oakbrook), *Rent* (Wagon Wheel Theatre), *How To Succeed...* ( Ensemble U/S Smitty/Krumholtz), *Pal Joey* (Terry U/S Vera Simpson) at Porchlight Music Theatre, and *The Kiss* (Chicago Dramatists Theater). BFA in Musical Theatre from Chicago College of Performing Arts. Up next for Lexi is the empowering musical *Ragtime* at Ogunquit playhouse. Love and thanks to the Daniel Hoff Agency, Mom, Dad, Chaz, Nana, the Frus. SPREAD THE LOVE!



**KATIE MITCHELL** (*Ensemble*) is thrilled to be joining this production of *On The Town!* Raised in Miami, Florida, Katie moved to New York to pursue her dance career after

graduating from Southern Methodist University with a BFA in Dance Performance. Katie has performed in regional musical theater productions across the country and is a Radio City Rockette. When she is not performing, Katie teaches and is a Master Teacher Trainer at Physique 57 in New York City and can be seen in many fitness videos. She would like to thank her agents, mom, dad, sister, and husband for their support and patience, and her Norwegian heritage for making her 5'10.5". [www.katiemitchellnyc.com](http://www.katiemitchellnyc.com)



**ALICIA NEWCOM** (*Ensemble*) is thrilled to be making her Gateway Playhouse debut in *On the Town!* Credits include Radio City's *Christmas Spectacular* (Rockette), *42nd Street*

(National Tour), *Saturday Night Fever* (Finger Lakes MTF) *Sweet Charity* (Arizona Broadway Theatre), and *The Will Rogers Follies* (Lyric Theatre of Oklahoma). Proud OCU alum. Endless love to my family and my husband James, and thanks to Scott, Michael, and everyone at the Gateway for this opportunity! [www.alicianewcom.com](http://www.alicianewcom.com)



# AVINO'S



## ITALIAN TABLE



NEIGHBORHOOD ITALIAN REDEFINED

PASTA | SEAFOOD | STEAK

OPEN DAILY FOR LUNCH & DINNER  
SUNDAY BRUNCH

631-803-6416

108 SOUTH COUNTRY ROAD, BELLPORT VILLAGE

AVINOSITALIANTABLE.COM



LOBSTERFEST, EVERY MONDAY  
SERVING BELLPORT SINCE 1985



**BRIAN RAY NORRIS** (*Ensemble*) is thrilled to be returning to Gateway Playhouse for his fourth production. Brian was most recently seen in Yale Reps production of *Assassins* and before that in *A Dog Story* at The Davenport Off Broadway as Guy Lassiter the Third. Brian was also featured in Paul Gordon's *Sense & Sensibility* as Lord Middleton at The Old Globe. Favorite roles include: Mr Bumble/*Oliver*, Chef Louis/*Little Mermaid* at TUTS, Jean-Michael/*Cinderella*, Big Davey/*Billy Elliot* at Gateway Playhouse, Billis/*South Pacific*, Beadle Bamford/*Sweeney Todd* and toured North America in *MammaMia!!!*



**AIDAN PASSARO** (*Youth Ensemble*) is excited to be back on stage at The Gateway! Broadway and National Tours: *Kinky Boots* (Young Charlie) Regional: *Billy Elliot* (Small Boy), *Pricilla*, *Queen of the Desert* (Benji) *Miracle on 34th Street* (Tommy Jr.) Thanks to Michael Baker, Rachel Colson, and the entire team at *On the Town*. Love to his parents, brothers, family, and friends.



**DYLAN COLE PASSMAN** (*Ensemble*) is thrilled to be making his Gateway debut! He is originally from Baton Rouge, LA and recently obtained his BFA in Musical Theatre from Ball State University. Regional: The Kennedy Center, Maine State Music Theatre, Fulton Theatre, Lyric Stage, and more. He wants to send much love to his Mom, Dad, Mrs. Melissa, Maddy, as well as his awesome and supportive friends, agents (CESD), and teachers, especially Ron! Proud AEA member. For Nessa. @dpass5678



**MYCHAL PHILLIPS** (*Lucy Schmeeler*) is delighted to return to The Gateway, after being seen as Columbia in *The Rocky Horror Show* and Erma in *Anything Goes* last season. Other recent credits include the National Tour of *Anything Goes* directed by Kathleen Marshall (Erma), Ogunquit Playhouse's *White Christmas* (Rhoda), and Ocean City Theatre Company's *Shrek* (Gingy). Thanks to Scott & the wonderful folks at Gateway, and to SW Artists! Love to my family & Mario. www.MychalPhillips.com

# Who's Who



**VIRGINIA PRESTON** (*Ivy*) Gateway debut! Virginia most recently appeared in the Broadway-bound production *Sousatzka* originating the role of Sarah McDougal. Her first national tour credits include *Dirty Dancing* (u/s Penny, Vivian). She is a recent graduate of the Alvin Ailey/Fordham University BFA program (summa cum laude). Much love to my family, friends, and agents at *The Mine*. @virginia.preston



**ANDY REDEKER** (*Judge Pitkin*) is the proud holder of a Bachelor of Music degree from the Indiana University School of Music. He is thrilled to be back at Gateway for the third time! He has been a studio singer for The Disney Company, Warner Music Publishing and has been a host/emcee for countless live events including The Tribeca Film Festival in New York and Doha, Qatar. As an Actor/Singer, he has been in: *Les Miserable* (Marius, Nat'l Tour); *Big!* (Josh u/s, Nat'l Tour); *Titanic* (Swing, Nat'l Tour); *The Music Man* (Olin Britt, Ogunquit Playhouse), *Beauty & The Beast* (Lumiere, Gateway Playhouse); *42nd Street* (Pat Denning, Gateway Playhouse). Thanks to Family & Friends for continued love and support. This (and every) show is dedicated to Mom & Dad!



**ERIC RIVAS** (*Ensemble*) is so excited for *On The Town*! Recently performed in Disney's new Castle show, *Mickey's Royal Friendship Faire* at Magic Kingdom. Favorite Regional credits: Dick in *Dames At Sea* (Theatre Zone), *West Side Story* (Signature Theatre), Al in *A Chorus Line* (NBFT), Coricopat in *CATS* (CMH), *Hello Dolly!* (CMH), *42nd Street* (Jersey Shore Ent.) and *Cabaret* (Palace Theatre). Showboy in *JUBILEE!* at Bally's Las Vegas. Cruise Line: Dancer/Singer/Aerialist for Disney and Norwegian. Alumni of The School at Jacob's Pillow (Jazz/Musical Theatre, Tap program) and Full Sail University: BFA in Filmmaking. Proud AEA member. Special thanks to our Director, Scott!

THE LONG ISLAND MUSEUM PRESENTS

# Midnight Rum

LONG ISLAND ~~AND~~ PROHIBITION

MAY 5-SEPTEMBER 4, 2017

JUNE 23-SEPTEMBER 17, 2017



Lumen Martin Winter  
AN ARTIST REMEMBERED



1200 ROUTE 25A • STONY BROOK, NY  
(631) 751-0066 • [longislandmuseum.org](http://longislandmuseum.org)  
THURS. - SAT. • 10 A.M. - 5 P.M. SUN. NOON - 5 P.M.



**MICHAEL SANTORA** (*Ensemble*) grew up in New Orleans and graduated with a BFA in Theatre. National Tours: *Annie* (Rooster), *Flashdance* (Joe), *Anything Goes* (Sailor Quartet). Regional credits:

*The Music Man* (Harold Hill), *Carousel* (Billy Bigelow), *Singin' in the Rain* (Don Lockwood), and *Forever Plaid* (Francis). Special thanks to Scott and Michael for letting me be a part of this amazing show!



**MARY STOUT** (*Madame Dilly*) How wonderful to be at beautiful Gateway! Mary is a seasoned theatre veteran with 7 Broadway shows under her belt as well as Off-Broadway and many

regional venues. She most recently has appeared in the pilot of *Nunsense* (TV series) as Reverend Mother, *Unbreakable Kimmy Schmidt* and *Odd Mom Out*. Mary is featured in several Disney movies - *Aladdin* and *Hunchback*. Last seen onstage as Duchess Maria in *Me And My Girl* at the Maltz Jupiter Theatre for which she was nominated for a Carbonell Award.



**THOMAS SUTTER** (*Ensemble*) hails from Upstate New York. He later attended a three-year program at The Ailey School and received a Certificate in Dance. While still in school, Thomas

began to perform professionally with Cats Paying Dues, a tap company directed by Andrew Nemr. After graduating in 2012, Thomas went on to perform in *White Christmas* at Westchester Broadway Theater, directed and choreographed by Randy Skinner, and *West Side Story* at Harbor Lights Theater Company, where he had the honor of learning the original Jerome Robbins choreography. Other regional credits include *Mamma Mia*, *Guys and Dolls*, and *Man of La Mancha* at Weston Playhouse.



**DANIEL SWITZER** (*Chip*) is grateful to be making his Gateway debut in *On the Town*. Film: *Newsies LIVE*. Tours: *Wicked* 1st Nat'l, *Newsies* 1st Nat'l and *CATS*. He's also had the pleasure to work

at Musical Theatre West, 3-D Theatricals, Hollywood Fringe Festival, The Muny and many others. Originally from St. Louis, MO, he now resides in New York City. "Much love to all who come to the theater. Thank you for your continued support!" @danyoswitzer

**SCOTT THOMPSON** (*Director/Choreographer*) will direct and choreograph. Mr. Thompson returns to Gateway having previously directed and choreographed *Sugar*, *The Some Like it Hot*

*Musical*. Scott has won numerous awards, including five Connecticut Critics Circle Awards, two San Francisco Critic's Awards, and the Los Angeles Ovation Award for his Direction and Choreography. His work has been seen on HBO television and worldwide via his work for Princess Cruises. He has directed and choreographed for both New York's Town Hall and Jazz at Lincoln Center. Scott directed Tony Award winner Betty Buckley in her first *Gypsy*, country music legend Larry Gatlin in *The Music Man* and Tony Award winner Cady Huffman in *Damn Yankees*. For the Library of Congress, he choreographed an all-star Gershwin Gala starring five-time Tony Award winner Audra McDonald, recording star Dawn Upshaw and Tony Award nominees Lara Teeter, David Garrison and Wanda Richert. Scott also created, directed and choreographed all the musical numbers for the HBO's *Cathouse – The Musical*, a documentary special shot in a genuine, active brothel outside Carson City Nevada. For his production of *Dames at Sea* at the Marines Memorial Theatre, Scott won the prestigious San Francisco Theatre Critics Award for Best Director and Choreographer, and the show was honored as Best Musical. Scott founded Austin Musical Theatre and served as its Producing Artistic Director for eight seasons, winning numerous Austin Critics Table Awards for producing and directing twenty Broadway scale productions featuring acclaimed performances from New York and Los Angeles luminaries. He is co-author and Director/Choreographer of the new Broadway bound musical hit *One for My Baby*.

**JEFFREY BUCHSBAUM** (*Music Director*) Jeffrey has been Musical Director Off-Broadway *On Second Avenue* (2 Drama Desk nominations) and *Tallulah's Party*, numerous National tours (*Titanic*, *Damn Yankees*) and International tours (*A Chorus Line*, *Phantom of the Opera*). He was also Director of National tours of *Camelot*, *Mame*, and *Phantom of the Opera* in Jakarta, Indonesia, and Assistant Director of the new musical film *Welcome To Harlem* (12 National film festival awards). He has also taught at NYU, LaGuardia High School for the Performing Arts, Middlesex and Mercer Colleges. Jeffrey is a voice teacher and audition coach in Manhattan. On *The Town* marks Jeffrey's 22nd show at The Gateway.



# PERA BELL

*Food Bar* ★

PATCHOGUE ★ RIVERHEAD



## The Restaurant for Every Occasion

We take pride in being a neighborhood style restaurant with globally inspired food in a casual yet refined setting.

---

Weekly Chalkboard Specials • Happy Hour Specials  
Seasonal Specialty Cocktail Menu • Farm to Table Menu  
Live Music • Outdoor Sidewalk Cafe



### **PeraBell Food Bar Riverhead**

Brick Oven Pizza • Large Outside Deck & Dining Area

PeraBell Patchogue  
69 E Main Street • 631.447.7766

PeraBell Riverhead  
65 E Main Street • 631.740.9494

**Visit Us Online at [PeraBellFoodBar.com](http://PeraBellFoodBar.com)**

**JOHN (JP) POLLARD** (*Production Stage Manager*) joins us for his 11th production at Gateway. Favorites include *Nice Work If You Can Get It*, starring Sally Struthers and *Anything Goes* starring Sally Struthers and Andrea McArdle. JP recently stage managed the West Coast tour of *An Act of God*, starring Sean Hayes, as well as *Carrie: The Musical Experience* in Los Angeles. He got his start in the theatre over 35 years ago working at Earl Holliman's Fiesta Dinner Playhouse, in his hometown of San Antonio, TX. Previous career highlights: the SRO San Francisco run of *The Search for Signs of Intelligent Life in The Universe* starring Lily Tomlin, four seasons at New Jersey's Paper Mill Playhouse, and an International production of *Grease - Das Musical* which toured Germany and Switzerland. In addition to theatre, he has also spent time as personal assistant to actress Sarah Jessica Parker. Proud Equity member since 1983.

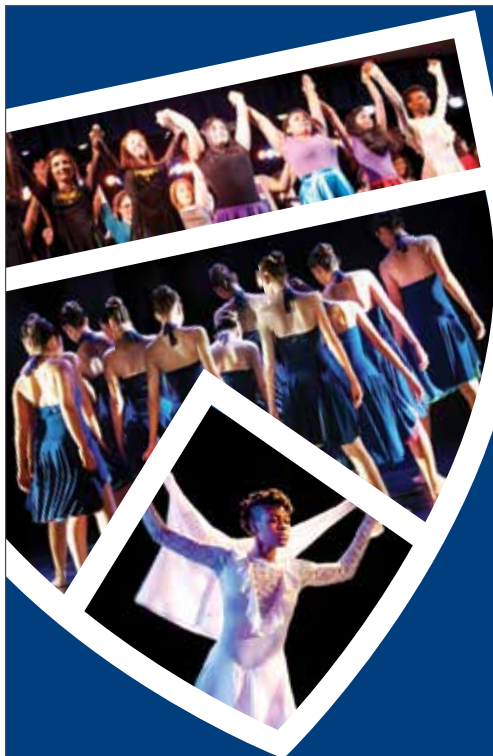
**MARCIA MADEIRA** (*Lighting Design*) is thrilled to be back at Gateway with Paul, Brian, Scott, Jeff, Bill and JP. Her favorite designs here include *Nice Work*, *42nd Street*, *Singing in the Rain*, *Dirty Rotten Scoundrels*, *West Side Story*, *Sugar*, *Thoroughly Modern Millie*, *On The Town* (2003), *Gypsy* and *The Fantastics*. She won the Shellie Award for *Les Miserables*, and for *Joseph...Dreamcoat* at the Contra Costa Musical Theatre. She has designed ice shows for all eleven RCCL cruise ships with rinks, including the new Harmony of the Seas. Previously Ms. Madeira received a Tony nomination and won The Drama Desk Award for the original *NINE* directed by Tommy Tune with Raul Julia. Other Broadway designs include *My One and Only* with Tommy Tune and Twiggy; and *The Music Man* with Dick van Dyke, directed and choreographed by Michael Kidd. ([www.mtmdesigns.org](http://www.mtmdesigns.org))

**MICHAEL BOYER** (*Scenic Design*) worked at Gateway Playhouse for 17 years, starting in 1983. He is pleased to be returning to Gateway for this production of "On The Town". At the same time he was working at Gateway during the summer, he started working in Key West in the winter. In Key West he first worked at the Tennessee Williams Theatre and more recently for the past 13 years at the Waterfront Playhouse, which for those of you who have been to Key West, is next to Mallory Square where the sunset celebration happens every night. Mike has also taught technical theatre at Florida Keys Community College, Jacksonville University in Florida, and Southwest Missouri State

University. His favorite shows in Key West are: *Twelve Angry Men*, and *The Producers*. At Gateway his favorite shows were: *Grand Hotel*, *Cabaret*, *Into the Woods*, and *Secret Garden*. He has also worked with children's theatre including Keys Kids and Camp Bravo. His scenery has been seen from Key West to Alaska and from Munich to Singapore. He attended Western Illinois University and Wayne State University and has a Master's degree in theatre. He was named most outstanding theatre student four years in a row at Western and received a full scholarship for his senior year. He is a member of United Scenic Artist, the designer's union. He would like to thank the crew for their hard work on this production. In addition he would like to thank the Gateway family especially Paul Allan.

**KEITH LEVENSON** (*Orchestrations and Keyboard Programming*) has conducted Broadway and National Touring productions of *Annie*, *The Best Little Whorehouse in Texas* (with Ann-Magret), *Grease*, *Jesus Christ Superstar*, *The Who's Tommy*, *Annie Warbucks*, *Big River*, *Chess*, *Peter Pan*, *She Loves Me* and *Dreamgirls*. Keith recently was Musical Director/Conductor of Jason Robert's Brown's *The Bridges of Madison County* on its First National Tour, and he recently completed the National Tour of *Annie* as Music Supervisor/Conductor and Orchestrator. As a Music Supervisor/Orchestrator/Arranger, Keith has worked on the National Touring Productions of *Oliver*, *Love Janis*, *Dirty Rotten Scoundrels*, *Camelot*, *Joseph and the Amazing Technicolor Dreamcoat*, and Franco Dragone's *India!*. Mr. Levenson's work as a composer/lyricist or librettist includes the musicals *Starcrossed* with Jeanine Tesori, *Winchell* with Martin Charni and Broadway's *The Flowering Peach*.

**BILL STONEHOUSE** (*Associate Lighting Designer*) is happy to return to the Gateway Playhouse this season. His work has found him all over the world designing national tours, opera, dance, corporate/special events, drama, and musical theatre. He's also worked as an assistant/associate designer in Off-Broadway, Regional Theatre, and Regional Opera. He is currently working full time in the Architectural Lighting world and designing for theatre whenever his schedule permits.



## SJC LONG ISLAND: WHERE TOMORROW'S LEADERS TAKE CENTER STAGE.

At St. Joseph's College, we combine our long-standing tradition of value-centered academic excellence with innovative programs and a rich, vibrant campus life – all at one of Long Island's most affordable colleges. No wonder *Washington Monthly* ranks us #7 in the Northeast as a “Best Bang for the Buck” college.



**The highest graduation rate**  
of any public or private  
institution on Long Island



Home to the **Clare Rose  
Playhouse** for theater  
courses and stage  
productions



Small, engaging classes  
with a **15:1 student to  
faculty ratio**



**Numerous clubs to  
foster your creativity**  
including dance, drama, show  
choir and the SJC Sharps,  
a female a capella group



**TRADITION.  
INNOVATION.  
EXCELLENCE.**

[sjcny.edu/long-island](http://sjcny.edu/long-island)  
631.687.5100

# Gateway Children's Theatre

JEFF BOYER PRODUCTIONS PRESENTS

**BUBBLE TROUBLE**

An Interactive Bubble Show

June 30 & July 1  
at Gateway Playhouse



DREAMWORKS

**MADAGASCAR**

A MUSICAL ADVENTURE JR.

July 7, 8, 14, 15  
at Gateway Playhouse



**Pinkalicious**

The Musical

July 21  
at Patchogue Theatre



Disney

**THE LION KING JR.**

July 28, 29, Aug 4, 5  
at Patchogue Theatre



**The Amazing Max**

Off-Broadway Illusionist

August 11  
at Patchogue Theatre



**Tickets at TheGateway.org**



NOW SHOWING at a Branch Near You!



AUTO LOANS



HOME EQUITY



CREDIT CARDS



PERSONAL LOANS



**SuffolkFederal**

*Better Banking For Long Island*

[www.suffolkfcu.org](http://www.suffolkfcu.org)  
(631) 213-6729



Commack • Eastport • Islandia • Medford • Miller Place  
Riverhead • Sayville (2016) • Southampton • West Babylon





# ACTING CLASSES

PROFESSIONAL  
INSTRUCTORS TEACH

Acting | Musical Theatre | Improv  
and our popular **Production Classes**  
with final performances of



ENROLL  
NOW!

**TheGateway.org**  
**(631) 286-0555 ext 5000**  
**Bellport, NY**

NIKE EYEWARE • COACH • NINE • TORY BURCH • LAFONT • DOLCE & GABANA • LACOSTE



## THE EYECARE CENTER OF BELLPORT

Dr. Edward Deneve, *Optometrist*  
Pam Beckerman, *Optician*

**5 Bellport Lane, Bellport Village**  
**Phone: 631.286.4014**

DIGITAL • PROGRESSIVE • NO-LINE LENSES

WIDER FIELD OF VISION, SUPERIOR CLARITY  
COMPARED TO REGULAR PROGRESSIVES

**FREE DESIGNER FRAME\***

**FREE EXAM  
EVERYDAY**

WITH PURCHASE\*\*

**WE ACCEPT ALL INSURANCE PLANS**

\*Select Frames. \*\*Bring in this Playbill Ad for discounts. Not valid with any other offers, plans or packages.



RALPH LAUREN • LACOSTE • ADIDAS • SILHOUETTE • VERSACE • NINE WEST

PRADA • LACOSTE • ADIDAS • SILHOUETTE • VERSACE • COACH • NINE

ADRIENNE VITTADINI • NINE WEST • COLORS IN OPTICS, LTD. • VALENTINO • VERSACE • LAFONT

# A PUB OF THE OLD STYLE

*Pub Fare That Will Make Your Tongue Smile*



*Relax Before or After The Show — Full Bar & Menu*

Kitchen Open 11 AM to 11 PM (Mon. thru Sat.) — Bar 'til 1 AM

70 North Ocean Avenue • Patchogue • (631) 289-1900 • [www.reeses1900pub.com](http://www.reeses1900pub.com)



Indoor & Outdoor dining available

1 First Street  
East Patchogue, 11772  
631-569-5719  
631-475-9843

Waterfront views create the ideal setting  
for a fine dining experience.

5 minutes from the Theater or Playhouse



Happy Hour



Specialty Drinks



Steaks



Seafood

Convenient Parking - Daily Food Specials - [www.ThePineGroveInn.com](http://www.ThePineGroveInn.com)

# CHET MITRANI PLASTERING, LLC

*Four Generations of Quality Craftmanship*

TRADITIONAL 3 COAT PLASTER | VENETIAN PLASTER

ORNAMENTAL PLASTER | CEMENT STUCCO

SPRAY FIREPROOFING | VENEER PLASTER | LATHING | EIFS

## CHET MITRANI

Office: 631.468.3150 Fax: 631.468.3152 Email: chet@cmitraniplastering.com

1039 Waverly Avenue, Holtsville, NY 11742

**WATERSIDE DINING**

**The** ***Oar***

**Steak & Seafood Grill**

**THE FINEST & FRESHEST SEAFOOD**

**Enjoy Sunset Cocktails**

Live music Friday and Sunday • Open Year Round Lunch & Dinner



**LATITUDE 121**  
— COASTAL GRILL —

**Come Visit Us at Our Second Location • Latitude 121 Coastal Grill**  
121 Main Street • Stony Brook, NY 11790 • (631) 675-9264



**264 WEST AVENUE, PATCHOGUE (631) 654-8266 THEOAR.COM**



# Protect your world

**Auto • Home • Life • Retirement**



## Call me today to discuss your options.

Some people think Allstate only protects your car. Truth is, Allstate can also protect your home or apartment, your boat, motorcycle - even your retirement and your life. And the more of your world you put in Good Hands®, the more you can save.



**John Cuenin**  
**631-758-7225**

629 Route 112, Suite 10  
Patchogue  
jc@allstate.com



**Allstate**

You're in good hands.

Auto Home Life Retirement

Insurance subject to terms, qualifications and availability. Allstate Property and Casualty Insurance Co., Allstate Fire and Casualty Insurance Co., Allstate Indemnity Co., Allstate Vehicle and Property Insurance Co., Northbrook, IL. Life insurance offered through Allstate Life Ins. Co. & Allstate Assurance Co. Northbrook, IL; Lincoln Benefit Life Co., Lincoln, NE; and American Heritage Life Insurance Co., Jacksonville, FL. In New York, life insurance offered through Allstate Life Insurance Co. of New York, Hauppauge, NY. Securities offered by Personal Financial Representatives through Allstate Financial Services, LLC (LSA Securities in LA and PA). Registered Broker-Dealer. Member FINRA, SIPC. Main Office: 2920 South

212187

## PREFERRED PRICING FOR PATRONS OF GATEWAY PLAYHOUSE

**HP**  
**HARVEST**  
**POWER**  
**SOLAR**

NOW IS THE TIME FOR

**SOLAR POWER**

Mention this ad and  
receive a \$25 gift card free with your  
in-home solar consultation



*Harvest the Sun... Reap the Rewards!*

Harvest Power LLC | 57A Saxon Avenue, Bay Shore, NY 11706

Office: 631-647-3402 | [www.harvestpower.net](http://www.harvestpower.net)

HP016-17B

# How do you tell someone their baby's ugly?



Maybe your "baby" is a logo that your friend designed 10 years ago, or a website your nephew built when he was in high school. We know how hard it is to admit that you have an ugly baby, but we call 'em like we see 'em...

## We fix ugly.



631 345 2202 :: [WWW.SEARLESGRAPHICS.COM](http://WWW.SEARLESGRAPHICS.COM) :: EST.1974



## SOUTH OCEAN GRILL

FINE CASUAL DINING BY THE BAY

### *Patchogue's Hidden Gem*

*Executive Chef Hirbin and his staff look forward to serving you!!!*

### SPECIALTY WINE & CRAFT BEERS

ARTISAN BREAD MADE ON PREMISES | MARKET SALADS

FRESH VEGETABLES | FRESHLY GROUND BURGERS

HAND SELECTED STEAKS AND FRESH FISH

HOUSE MADE DESSERT SELECTIONS

**TUESDAY -SUNDAY – LUNCH 11:30-3:00 – DINNER 5-10**

567 S. OCEAN AVE | PATCHOGUE, NY | 631-307-9999

**WWW.SOUTHOCEANGRILL.COM**

*The  
Lake  
Shore*

## *Assisted Living Residence*

211 LAKE SHORE ROAD, LAKE RONKONKOMA, NY 11779

631.585.8800 | LAKESHORELI.COM



**RATES STARTING AT \$2,700 PER MONTH!  
CALL US TODAY TO SCHEDULE A TOUR!**



## WILLIAM J. O'NEILL SALES EXCHANGE

Short Term Collateral Loans | Antique & Contemporary Jewelry  
 Expert Watch & Jewelry Repairs & Redesigns | Musical Instruments & Rentals  
 Written Appraisals | Bridal & Corporate Gifts

One East Main Street, Patchogue, New York | 631-289-9899 | [www.wmjoneills.com](http://www.wmjoneills.com)

*Plaza* CINEMA &  
 MEDIA ARTS CENTER

20 Terry Street, Suite 121  
 Patchogue, NY 11772 (631) 438-0083  
[www.plazamac.org](http://www.plazamac.org)



**Critically Acclaimed Films**



**Filmed Plays & Operas**



**Guest Speakers & Seminars**



**Animation & Filmmaking Classes**

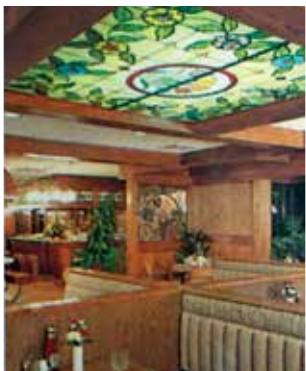


**Media Literacy & Field Trips**



**Blue Velvet Lounge Wine Bar**





## • ROYAL OAK DINER •

**Seafood • Steaks • Chops • Baking on Premises**  
***Daily Specials for Breakfast, Lunch & Dinner***

900 Station Road, Bellport, NY  
(minutes from Theaters • Off Sunrise Hwy. (Ext. 56) Station Rd.)  
Sun. - Thurs. 7am-10pm • Fri.-Sat. 6am-12am

**631-286-5757**

**EARLY BIRD  
SPECIAL**  
3 - 5:45 pm  
7 Days



# STAGE DOOR

## SCHOOL OF DANCE

**Check out Our Amazing Class  
Schedule and Register ONLINE Today!**

Owned by **Broadway & Gateway** veteran, Mary Giattino-Styles, Stage Door has classes for everyone! From Pre-Schoolers to Adults, from Beginners to Advanced Dancers, we have every genre of dance you can think of! Call or email us today and let us help you find the perfect class for your dancer!

**Start your school year the healthy way  
and join our dance family!**

### STAGE DOOR SCHOOL OF DANCE

655-19 Montauk Hwy, E Patchogue NY 11772

631.654.8858

[www.StageDoorDancer.com](http://www.StageDoorDancer.com)

**IN OUR  
42<sup>ND</sup> YEAR!**

THE SMASH HIT MUSICAL BASED ON THE SONGS OF ABBA®

# MAMMA MIA!



Featuring  
Broadway, Film, & TV Star  
**Patrick Cassidy**  
as Sam

*July 19-August 5*

at Patchogue Theatre

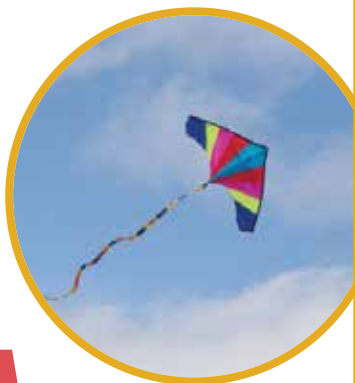
Teens ages 13-19 get 50% Off Tickets

# LITTLE SHOP OF HORRORS



*Aug 23-Sept 9*

at Gateway Playhouse



Where I grew up every young boy needed to master the art of kite flying.

The thread in your hands, guiding the kite as it soars, lifting your spirit.

Makes you feel part of something bigger than yourself.

You feel that at a community hospital... especially Brookhaven.

We know our patients.  
Their families. Their stories.

**Our work is to save their lives.**

The new Knapp Cardiac Care Center will help us save even more.

**My spirit is soaring."**

- Dr. Waqas Khan  
*Interventional Cardiologist*  
Knapp Cardiac Care Center



A more heartfelt approach to cardiac care.  
[brookhavenhospital.org/knapp](http://brookhavenhospital.org/knapp)

# Swezey

**FUEL CO., INC. - EST. 1919**

## Suffolk's Largest Family Owned Energy Company

- Heating & Air Conditioning
- Automatic Oil Delivery Service
- 24-Hour Emergency Service
- Budget Plans that Pay You Interest
- Expert Installations of Boilers, Burners, Hot Water Heaters & Air Conditioning Equipment



# 475-0270

**51 RIDER AVE., PATCHOGUE**



## ROE AGENCY INC.

*Over A Century of Commitment  
Since 1898*

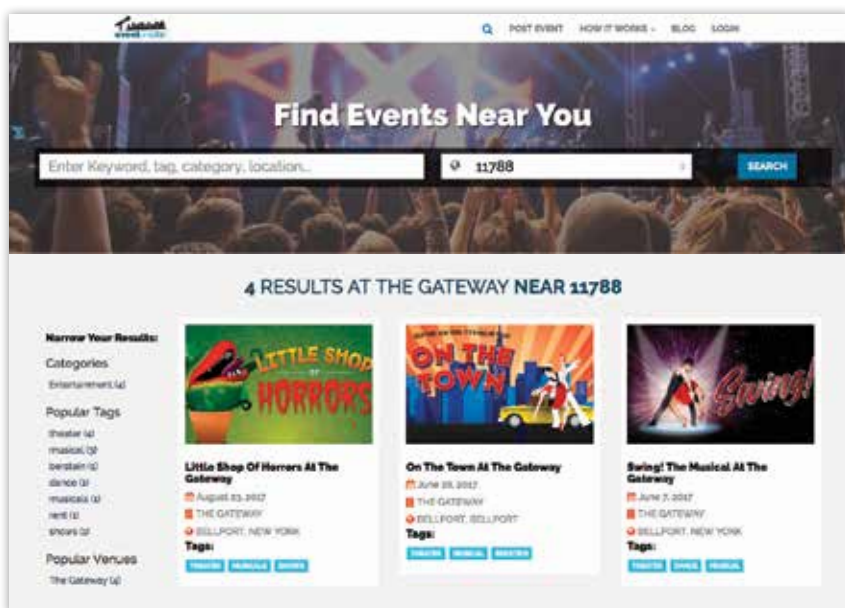
**ALL FORMS OF INSURANCE**  
*PERSONAL & COMMERCIAL*

*Call us for a quote!*

125 East Main St., Patchogue, NY 11772  
p: 631.475.4000 f: 631.475.7648



# FIND EVENTS NEAR YOU!



Search Events by Zip Code,  
Category, Venue, and more.

[www.eventincite.com](http://www.eventincite.com)



## Releve' Dance Centre

33B Montauk Hwy, Blue Point, NY  
www.relevedance.com

Hip Hopping  
Tots



Princess  
Ballerinas

rdc889@aol.com  
631-472-9322

Classes for all ages offered in Acro,  
Ballet, Hip Hop, Jazz, Lyrical, Tap  
& our NEW Toddler Programs Hip  
Hopping Tots & Princess Ballerina!



**MONTI'S**  
AUTO WORKS

**IT'S IN THE DETAILS**

**EXPERT AUTO  
COLLISION REPAIRS**

ALL INSURANCE ACCEPTED



1791 MONTAUK HIGHWAY  
BELLPORT, NY 11713

**286-2116**



**Ruland**  
FUNERAL HOME, Inc.

*Proudly Supporting The Arts  
That Enrich Our Lives*

**475-0098**

500 N. OCEAN AVE, PATCHOGUE NY 11772

**ANTOS AGENCY INC.**  
Insurance Services  
**AUTO \* HOME \* BUSINESS**  
*Insurance Protection Since 1979*  
*You can count on us!*

**INSURANCE YOU CAN TRUST!**

**CALL US FOR A FREE QUOTE**  
**631-360-3737**  
158 Terry Road  
Smithtown, NY 11787  
**antosagencyinc.com**

# PERFORMING ARTS CENTER OF SUFFOLK COUNTY

## BOARD OF DIRECTORS

Chair ..... Diane Giattino  
Vice-Chair ..... Ann L. Nowak

Secretary/Treasurer ..... Gale Edwards  
Directors ..... Paul Allan, Frank Lento  
Lisa Meyer Fertel

## ADMINISTRATIVE

Executive Artistic Director ..... Paul Allan  
Director of Business Operations ..... Jeff Bellante  
Casting Director ..... Michael Baker  
Company Manager ..... Aubrey Kyler  
Director of Development  
/Public Relations ..... Scot Patrick Allan  
Casting Assistant ..... Rachel Colson  
Asst. Company Manager ..... Ming-Shiuan Pu  
Payroll ..... Gale Edwards  
HR/Contracts Coordinator ..... Ada Graham  
Marketing Director ..... Jodi Giambrore  
Guest Services ..... Tim Cole

## ARTISTIC STAFF

Director/Choreographer ..... Scott Thompson  
Associate Director/Choreographer ..... Barrett Davis  
Music Director ..... Jeffrey Buchsbaum  
Scenic Designer ..... Michael Boyer  
Lighting Designer ..... Marcia Madeira  
Orchestrations and  
Keyboard Programming ..... Keith Levenson  
Costumes by ..... Costume World  
Wig Design ..... Lauren McCoy  
Associate Lighting Designer ..... Bill Stonehouse  
Musical Contractor ..... Peter Pece  
Production Photographer ..... Jeff Bellante  
Season Understudies ..... Scot Patrick Alan  
Michael Edward Baker

## FACILITIES

Facilities & Concessions Manager .. Blake Armitstead  
Cleaning Staff ..... Jasper Bailey  
House Staff ..... David Bellante, Dave Cohen  
Denise Croke, Brianna Coccia, Meghan Fawcett  
Lauren Hersh, Kjell Houghtalen, Joe Kraus  
Alex Pardo, Tyler Pegg, Lindsay Press  
Marissa Riuz, Zoey Smith, Emily Vaeth  
Grounds Maintenance .. HTM Landscaping Company  
General Counsel ..... Ann L. Nowak

## EDUCATION

Acting School Director ..... Michael Baker  
Acting School Manager ..... Rachel Colson  
Teaching Staff ..... Rachel Colson, Bethany Dellapolla  
Matt Karris, Brooke Turner, Amy Woschnik  
Accompanists ..... Peter Pece, Anthony Vetere

## PRODUCTION

Production Manager ..... Brian Loesch  
Production Stage Manager ..... John "JP" Pollard  
Rentals Manager/Assistant  
Production Manager ..... Tony Tambasco  
Technical Director ..... Michael Martineau  
Master Electrician ..... Ryan Shepard  
Sound Engineer ..... Robert McGarrity  
Props Master ..... Mitch Domer  
Wardrobe/Wig Supervisor ..... Megan Reed  
Wigmaster ..... Lauren McCoy  
Scenic Artist ..... Janelle Mosovsky  
Assistant Technical Director ..... Michele Ponton  
Asst Master Electrician ..... Matthew Brehm  
Asst Stage Manager ..... Christopher Lossie  
Shop Foreman ..... John Paul Baker  
Wardrobe Shop Assistant ..... David McKell  
Props Assistant ..... Zach Thomas  
Wardrobe Crew Chief ..... Katrina Blankenship  
Staff Electrician ..... Josh Furth  
Carpenters ..... Gregory Pitts, Megan Ruskey  
Patrick St. John

## APPRENTICES

Stage Management Apprentice ..... Taylor Gulotta  
Carpentry Apprentices ..... Megan Bolander  
Darrion Dockins  
Electrics Apprentice ..... Lana Roff  
Wardrobe Apprentice ..... Meagan Coomer  
Wig and Makeup Apprentice ..... Amber Martin

## INTERNS

Stage Management Intern ..... Melissa Dillion  
Carpentry Interns ..... Colin Nickel, Luke Raines  
Kyra Love Smiley, William Vogel  
Electrics Intern ..... Tia Fields  
Sound Intern ..... Kyra McNeil  
Wardrobe Intern ..... Anna Barge

## BOX OFFICE

Box Office Manager/Group Sales ..... Laurie Cole  
House Manager/Group Sales ..... Joanne Famiglietti  
Box Office Staff ..... Abigail Beodeker  
Cooper Cannizzaro, Julia Bellante  
Janet Caponi, Judy Bianco, Melanie Hamilton  
Phyllis Kaye, Tina Realmuto

# SMALLCAKES

CUPCAKERY AND CREAMERY

CUPCAKES | CAKES | ICE CREAM  
COFFEE | GLUTEN FREE CHOICES

OUR ICE CREAM IS MADE IN HOUSE



CUSTOM ORDERS | SPECIAL OCCASIONS  
CORPORATE ACCOUNTS

**WE BAKE & FROST 12 SIGNATURE  
FLAVORS & SEASONAL SPECIALS**

PATCHOGUE, NY

**631.500.9300**



open 6 days  
tuesday-sunday  
11:30am-2am

your neighborhood  
restaurant & pub  
est. 1986

late night  
kitchen open  
until 11pm

L.I.E.

Nichols Rd. Waverly Ave. Patchogue Theatre

Capital One Bank Blue Point Ave. Cavanaugh's Main Street Montauk Highway Gateway Playhouse South Country Rd.

**255 Blue Point Avenue**  
**Blue Point** 🍀 **631-363-2666**

OPEN TUESDAY-SUNDAY 🍀 11:30-2AM  
LATE NIGHT KITCHEN OPEN UNTIL 11PM  
**cavanaugh'sbluepoint.com**

📘 Find us on facebook

*Richard York*   
OF PATCHOGUE



## SHOES

From Patchogue Theatre  
entrance, 1 block west  
and four stores south

Caring & Knowledgeable Service  
Sizes & Widths up to EEEEE

**Quality Footwear Since 1927**

Comfortable Shoes, Sneakers, Sandals, Boots,  
Slippers & Socks for Men Women & Children  
**www.richardYorkofpatchogueshoes.com**

14 South Ocean Ave • Patchogue, NY 11772  
**631-475-1047**

Rockport, Easy Spirit, Florsheim, New Balance, Stride Rite,  
Teva, Timberland, Skechers, Ros Hommerson, Hoffer,  
Keds, Reebok, Dyeables, Topsisider, Soft Spots, Clarks,  
Naturalizer, Hush Puppies, Daniel Green, Foamtreads,  
Toe Warmer Boots, Fittlop, Walking Cradles, etc.

**10% OFF ANY PURCHASE  
WITH AD ONLY**

Excludes Dr. Martens & other offers. Expires 12/31/17

**IMAGINE WHAT YOU COULD BE  
DOING THIS WEEKEND...**



*if you had your pilot license!*  
**Learn to fly.**

SERVING THE LONG ISLAND AVIATION COMMUNITY SINCE 1948



## MID ISLAND FLIGHT SCHOOL

Lessons, Intro Flights & Sightseeing Rides  
Gift Certificates available  
Weeklong Aero Camps, Grades 6-12

**LI MacArthur Airport 631-588-5400**  
**Brookhaven Airport 631-281-5400**

**www.midislandair.com**

# CONTRIBUTE TO THE FUTURE OF THE ARTS

We invite you to lend your support  
and become a bigger part of our  
performing arts family.

- ★ **STAR BILLING**  
**\$25,000 +**
- ★ **LEADING PLAYER**  
**\$15,000 +**
- ★ **PRINCIPAL ROLE**  
**\$5,000 +**
- ★ **DIRECTOR'S CIRCLE**  
**\$2,500 +**
- ★ **FRONT ROW VIP**  
**\$1,000 +**
- ★ **BACKSTAGE PASS**  
**\$500 +**
- ★ **CAST MEMBER**  
**\$250 +**
- ★ **STAGE HAND**  
**\$100 +**
- ★ **FAN CLUB**  
**\$50 +**

GO TO [THEGATEWAY.ORG](http://THEGATEWAY.ORG) AND CLICK  
ON SUPPORT OR CALL (631) 286-7027  
FOR MORE INFORMATION

*The Performing Arts Center of  
Suffolk County is a 501(c)3 non-profit  
organization – all donations are 100%  
tax-deductible. Thank you for your  
contribution to the future of the arts!*

To adjust the way your name is  
listed here, please email  
[Scot@TheGateway.org](mailto:Scot@TheGateway.org)  
or call **631-286-7027**.

## BOARD MEMBERS

Paul Allan  
Gale Edwards  
Diane Giattino  
Frank Lento  
Lisa Meyer-Fertal  
Ann Nowak

## STAR BILLING

Ingird Arneberg and Will Marin  
AARP  
The Knapp Swezey Foundation  
County of Suffolk

## LEADING PLAYER

The Kana Family  
Suffolk Federal Credit Union

## PRINCIPAL ROLE

Avinos Italian Table  
The Bellport Restaurant  
The Brickhouse Brewery  
Cecile Defforey  
New York State Council on the Arts  
Frank and Ginny Palamara  
Painters Restaurant  
Porters on the Lane  
Mr. and Mrs.  
Richard D. Rockwell  
Searles Graphics, Inc.  
South Country Tavern  
Sunset Harbour  
County of Suffolk -  
Cultural Arts Council

## DIRECTOR'S CIRCLE

Estella and Robert Clasen  
Catherine Ann Conneally  
Cullen and Danowski LLP  
Fiori Enterprises  
MVP Automotive  
William J. O'Neill Sales  
Exchange Co., Inc.

## FRONT ROW VIP

Teresa Abramowski  
and Everett Och  
Kent and Connie Adee  
John and Loree Bowcock  
John Shea Jr. and Diane Crean  
Cheryl A. Felice and  
Lorraine Kuehn  
Judy Fortuna-Ince and  
Peter Ince

J. and Robert Klingler  
Robert Koenig  
Frank, Diane and Jill Lento  
Gloria Mancuso and  
Glenn Dielmann  
Mediterranean Manor  
Jay Merullo  
Dave and Debbie Morrissey  
Michael and  
Hwasoon Mullaney  
Phylis Natoli and  
Debbie Ann Chang  
Papa Nicks Pizzeria  
Barbara and Eric Russo and Family  
South Country Lions Club

## BACKSTAGE PASS

Bill Allan and Mary Lou Maloney  
Ken and Helen Budny  
Linda Carr Relethford  
Tom Connelly  
Thomas and Sara Jane Corwin  
John and Erna Cuenin  
Mary Jane and Brian Cullen  
Gloria Cummings  
Charles and Linda DesJardin  
Carol Dubin  
Ken and Tami Fehling  
Flanzer Construction  
Anna Lou Fletcher  
Fran and Laurie Fosmire  
James and Diane Giattino  
Ed Graziano and Doug Carabe  
Susan Kahl and Jim Vaughan  
Titus Kana  
Timothy Kana  
Joan and Irwin Kirtman  
Ed and Barbara Knowles  
Vasili Kreatsoulas  
Jeffrey Leibowitz, Atlantic Agency  
Insurance and Risk Management  
Vincent and Linda Leuzzi  
Ann Marie and Gary Loesch  
Jane Love  
Margie K Ludewig  
Roe Agency  
Joe and Tricia Manno  
Jim Martinsen and Robin Stevens  
Glenn and Louise Mehrtens  
Veronica K. O'Connor  
Bob and Kathe Palermo  
Maria and Richard Pierce  
Bob and Ann Quinn  
Peg and Al Rand



Jean-Marie and  
Selima Salaun  
Matthew and  
Alison Scollan  
Diane Sherman  
Judith Steinberg  
Frank and Marie Trotta  
John and Lorelei Tuthill  
Alison and Rob Wegener,  
TOLA.  
Joseph and Patricia  
Van De Wetering  
James and Ellen Vlachos  
Peter E. Williams

### CAST MEMBER

Michael Baker and  
Jessica Baker  
JoAnn and Horst Boettcher  
Robert and  
Claudia Connors  
Kathy and Tom Cullen  
Alexandra Diamond  
Susan DiBernardo  
Melissa Donovan-Foglia  
Kim Dooney  
Bob Durkin  
Marjorie Feeney  
Guy Gagliano  
Anthony Gandolfo  
and Sal Rosa  
Robert and  
Allene Goldberg  
Alfred and Eleanor Hobbs  
Judith Hope  
Todd Kana  
Chris Kana  
Austin and Hannah Kana  
Carolann LaFountain  
Nikki Lint  
Brian and Brittany Loesch  
Andrea McCabe  
Murray and Quarletore  
Fuel Oil  
Lauri Murray  
Renee Negron  
Daniel and  
Michele O'Keefe  
Fred Ordower  
Ann and Bob Quinn  
Swan Bakery  
John and Janet Taylor  
Susan and  
Magnus Thorstenn

David Tobachnik and  
Alice Ann Humphrey  
Terry and Joanne Tuthill  
Bob and LouAnn Tuzza  
Reverend and  
Mrs. John Wallace  
Carolyn and  
Francis G. Walsh  
F. George and  
Carolyn Walsh  
Ginny and Pres Waterman  
Scott York and Don White

### STAGE HAND

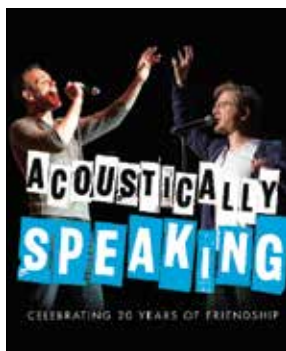
Leonard and Eileen Astrin  
Ion and Miana Azzola  
Kevin and Patrice Beach  
Troy Beard  
Mr. and Mrs. Jeff Bellante  
E. L. Bergen  
Bisagni Family  
Janet and Fred Braun  
June Cardenas  
Mary Lou Cohalan  
Elaine and Irwin Cooper  
Rich and Kathleen Dallin  
Mr. and Mrs.  
Edward Dankievitch  
Judith Drange  
Nancy Duncan and  
Jamie Moog  
Elizabeth Entress  
Wendy and Roy Erlandson  
Nick and Julia Fasano  
Lorraine Fey  
Katie Ford-Mehrken  
Mr. and Mrs.  
Philip Gambino  
Carl Goodwin  
Jane Potter Graham  
Gladys Gregnoli  
Felix and Madeline Grucci  
Marilyn Hamilton and  
Joseph LaGennusa  
Sally Harris  
Timothy and  
Laura Hawryluk  
Jean Heblich  
Richard Hoshino  
Richard Jacoby  
Janice F. Klein  
Michael and Gae La Salle  
Carol and Giacomo LaFata  
Richard and Janet Loehr

Dominick LoSquadro  
Ann Lucas  
Gail M. Mancuso  
Susan Masciello  
Ellen J. Masterson  
Nancy McGovern-Halloran  
John Morris  
Suzanne Niemeyer  
Terence Noonan and  
Matthew Gray  
Kevin and Joy O'Brien  
Mrs. Allison O'Keefe  
Ann and Bill O'Shea  
Karen and Sal Palacino  
Jeanette Paolillo  
Dennis and Sharon Pape  
Lynn and Joe Pessalano  
Rev. Thomas Philipp  
Jean Pokorny  
Alyse Porsella  
Anthony and  
Rachelle Psaris  
Sandy Reifel  
Ruth and Stanley Resnick  
Bill and Monica Rignola  
Hank and Sonny Rotella  
Frank and Judith Russo  
Ray W. Schiemel and  
Susan E. Coseglia  
Donald and Iva Sheehan  
Geri and Joe Skelly  
Michele Smith  
Donald Steckler  
Don and Ann Stonebridge  
Lawrence J. Strickland  
Denise and  
Richard Strothman  
Patricia Tarasenko  
Laura Terwilliger  
Patricia A. Trainor  
and Taylor O. Alonso  
Nancy and Roy Vaillancourt  
Diana Voorhees  
Irwin and Susan Wein  
Genie and Carol Weisman  
Allen and Angela Welcome  
Cindi and Robert Wellins  
William and  
Janet Wroblecki  
Kathy and Ira Zankel

### FAN CLUB

Richard and Evelyn Brody  
Hat and Stachery  
Leslie Cook  
The Cotter Family  
Kathie Davis  
Tracey Davis  
Dennis and  
Kathleen Desmond  
Carol Drechsler  
Myrna Einbinder  
Phil and Patricia Faicco  
Thomas and  
Jo-Ann Gilhuley  
Joseph and  
Tara Graskemper  
Elizabeth and Lee Harrison  
Kathy Scheuermann  
and Friends  
Kathleen Irish  
Frances Iwanicki  
Robert Judem-Cautin  
David and  
Peggy Kulakowski  
Maxine Maher  
Barbara Mazzella  
Lewis and Karen Miller  
Mr. Murray Naviloff  
Stan and Joan Novack  
Susan and  
Michael O'Grady  
Richard and  
Ruth Ann Otterstedt  
Ronny Pliszak  
Janet Rate  
Andrew and Jennifer Setzer  
Mary Ellen Smith  
Gary and Diane Zanazzi  
Dr. Paul and Ingrid Zola

*\*Listed names reflect 2017  
FY donations*



## ADAM PASCAL & ANTHONY RAPP ACOUSTICALLY SPEAKING

Staller Center, Stony Brook University  
**SUN, MARCH 25, 2018 / 7 PM**

The original RENT stars  
celebrating 20 years  
of friendship

Tickets \$42  
**stallercenter.com**  
(631) 632-ARTS [2787]

Complete Staller Center  
season now on sale



## PATCHOGUE EVENTS 2017

**LIVE AFTER FIVE • 7/6 7/20 8/3 & 8/17**  
**PATCHOGUE BLOCK PARTY • 7/7**  
**FAMILY FUN NIGHT • 8/11**  
**IST. LIBERATA ITALIAN FESTIVAL • 9/16**  
**CHILI & CHOWDER FESTIVAL • 10/21**  
**HALLOWEEN HAPPENINGS • 10/31**  
**IDIA DE LOS MUERTOS GALA • 11/4**  
**CHRISTMAS HOLIDAY BOAT PARADE • 11/19**  
**CHRISTMAS PARADE • 11/25**  
**MIDNIGHT ON MAIN STREET • 12/31**

ALL EVENTS LISTED ARE LOCATED ON MAIN STREET,  
OPEN TO THE PUBLIC AND FREE TO ATTEND.  
For more information, visit [PATCHOGUE.COM](http://PATCHOGUE.COM)



NorthForkCreative.com  
Logos • Branding

## YOUR AD HERE

ADVERTISE IN THE NEXT

*Gateway* **PLAYBILL**



Visit

[www.gatewayplaybill.com](http://www.gatewayplaybill.com)  
for more information or call us  
at **631-345-2202** to speak to  
an account manager.

*Breathe it! Feel it! Love it!*



We offer Separate Adult & Children's Salt Therapy  
Sessions as well as a Private Salt Booth.

**631 • 472 • SALT (7528)**

**569 Middle Rd. • Bayport, NY 11705**

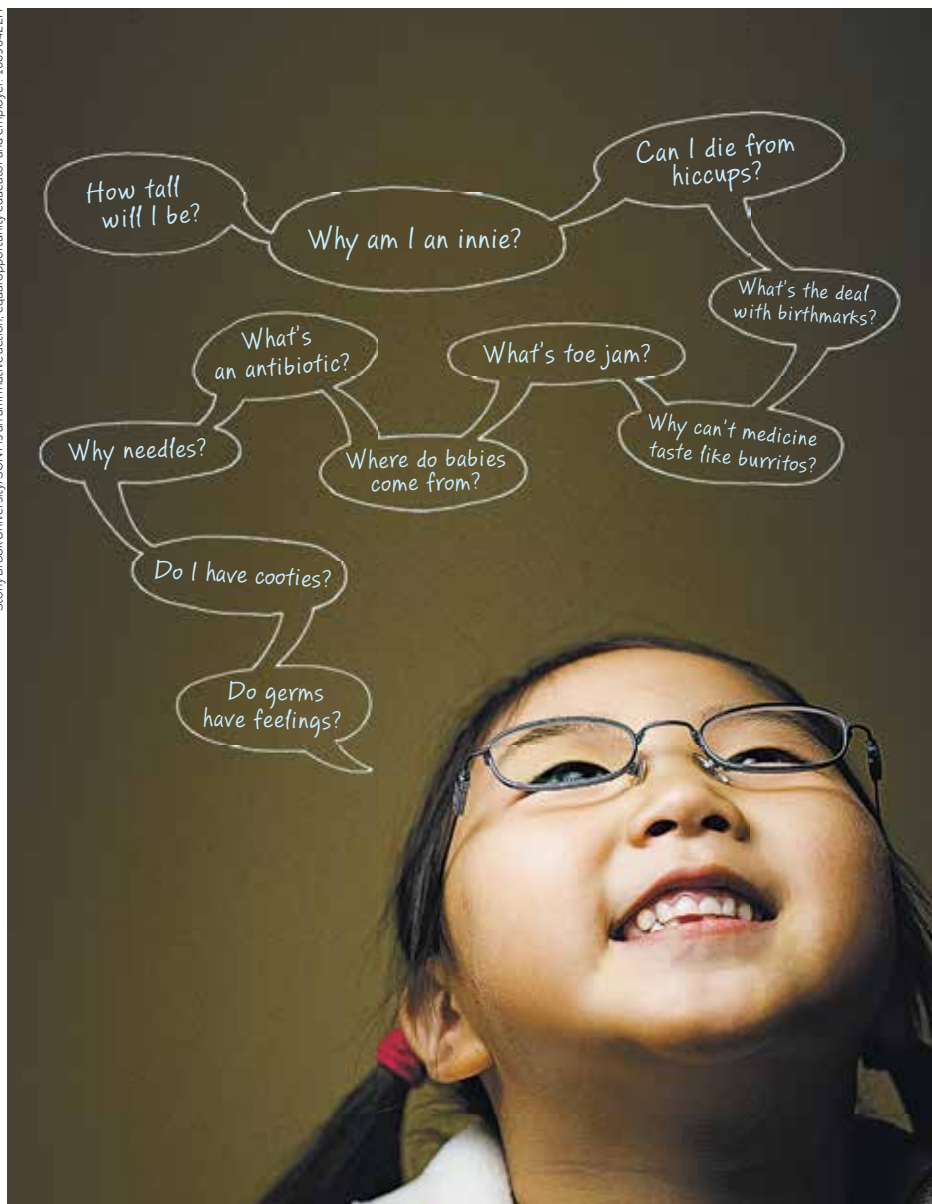
[www.salthaveninc.com](http://www.salthaveninc.com)



Gift Certificates Available

## Thank You To Our Volunteers

Carmela Aiosa, Missy Atchue, Violet Bezler,  
Camille Brideson, Mary Lou Cohalan, Nancy Connolly,  
Millie D'Agostino, Pat Ely, Betty Entress, Kristina Farmer,  
Linda Gaimaro, Joyce Gambina, Kaitlyn Gambina,  
Linda Gomez, Linda Good, Mary Hubner, Barbara Keup,  
Bob Koenig, Mary Lanier, Jo Livote, Beatrice Marelli,  
Andrea McCabe, Connie Merced, Sue Nemet, Judy Onorato,  
Peter Pernice, Bea Peters, Linda Randolph, Sandy Reifel, Pat  
Satalone, Harold Schiffman, Cathy Steinkraus,  
Nancy Wierzbowski, Mary Wirth, and Joyce Wowak.



### **They have questions. We have answers.**

And with more than 180 pediatric specialists at Stony Brook Children's Hospital, we also have the unique ability to treat even the most difficult health needs of your child, all in a kid-friendly environment made just for them.

**Part of Stony Brook Medicine** | [stonybrookchildrens.org](http://stonybrookchildrens.org)



**Stony Brook**  
**Children's**

The best ideas in medicine for kids.

Coming Soon to  
our Patchogue  
community



## Coming this July Northwell Health Physician Partners at Patchogue

Comprehensive multispecialty care at one location in the Patchogue community.

- Cardiology
- Gastroenterology
- Pulmonary Medicine
- Rheumatology
- Nephrology
- Ophthalmology

205 South Ocean Avenue, Patchogue, NY 11772



**Northwell**  
Health®

**Physician Partners**

Over 350 convenient locations. Most insurance accepted.  
Learn more about Northwell Health Physician Partners at:  
[Northwell.edu/PhysicianPartners](http://Northwell.edu/PhysicianPartners).