

# SUNSET BLVD.

**AUGUST 3 - AUGUST 20**  
**IN BELLPORT**



# Wm. J. O'Neill

*Sales Exchange Co., Inc.  
Jewelers and Collateral Loanbrokers*

Classic and  
Contemporary

Platinum  
and Gold



Jewelry designs  
that will excite your senses.

## Loans On Personal Property

Fast & Confidential • No Maximum Loan • No Credit Check  
Excellent Buys On Unredeemed Pledges

LICENSED & BONDED

*Jewelry • Diamonds • Watches • Sterling Flatware • Musical Instruments*

## We Buy Gold

### Expert Jewelry Repairs

Licensed By Suffolk County Consumer Affairs

*Serving Long Island For Over 60 Years*

One East Main St., Patchogue

631.289.9899 [www.wmjoneills.com](http://www.wmjoneills.com)

Mention this ad for 10% discount on purchase



Veronica O'Neill, President

Jewelry items subject to availability.

*Musical  
Instrument  
Rentals*



It has been more than 60 years since Daisy, our family cow was pushed out of the barn to make space for scenery, props and dressing rooms. Robert Duvall, John Carradine, Gene Hackman and a long list of future stars came to Bellport to perfect their craft and take part in a tradition called summer stock. Summer stock theatres thrived throughout the 1950's and '60's and Gateway was no exception. In the 1970's, the public's taste for theatre became more sophisticated. Instead of coming to see up and coming artists, people wanted to see fully seasoned performers in slick and professional productions. Gateway adapted to those changes and continued to thrive through the 80's and '90's while many of the original summer stocks closed their doors.

The tumbling economy has affected the whole country. We have struggled to stay afloat during these past few tumultuous years and now know that ticket sales alone do not sufficiently cover the cost of the productions. Other regional theaters generate 15-50% of their revenue from public and private sponsorship. We also need this type of support to continue.

The Performing Arts Center of Suffolk County has been formed as a non-profit corporation that will produce The Gateway 2011 Season, and future seasons. We will pursue funding through foundation grants, corporate sponsorships and private donors as well. This is where we need you. We would appreciate any donation, small or large, that you are able to make at this time. Our future does depend on the support we are asking for. If you are not in a position to give additional financial support, please know your patronage is vital to our survival.

We will be using this summer as a huge period of transition. The Performing Arts Center will begin to enable the community to work with us in our pursuit to present quality theater at affordable prices. It will help our acting school thrive and continue to inspire young artists.

Our longtime commitment and effort in providing theatrical excellence is unequalled on Long Island. We need you and your love of the arts to keep us alive and energized to bring you the quality of theater you have come to expect. Membership at The Gateway will now be a more interactive experience that can include "meet and greets" with the casts of the shows; an invitation to dress rehearsal, and special social nights exclusively for members. We look forward to working with you to continue our legacy.

We truly appreciate your continued support and loyalty to The Gateway Playhouse.

Yours truly,

Paul Allan

Executive Director/Producer

**The Show Goes On...  
Before The Play & After The Matinee,**

# Bellport Village Welcomes You



## THE BELLPORT

Steps away from the Gateway Playhouse



New York Times Review

159 South Country Road, Bellport, New York 11713  
(631) 286-7550



**Creative Framing  
Preserves Memories**

**631.803.6076**

147 South Country Rd., Bellport  
www.BellportArts.com

**Marylou Swan Realty Corp.**

www.swanproperties.com

322 South Country Rd.  
East Patchogue, NY 11772

**631-289-5550**  
**631-286-1222**

*An Established Tradition of Service*

FOR ALL YOUR REAL ESTATE NEEDS  
CALL YOUR LOCAL BROKER  
SERVING THE AREA FOR  
OVER 20 YEARS!

- Residential
- Commercial
- Free Market Analysis
- Notary Public

Deborah L. Galligan  
*Broker/Owner*

**Carla Morla's**

**ICE CREAM PARLOR  
& OLD FASHIONED CANDY SHOP**

COUPON COUPON COUPON

*Buy 1 Get 1 Half Price*

COUPON COUPON COUPON

8 Bellport Lane, Bellport Village, NY 11713  
631-803-6108

Located across the street from Porters on the Lane  
email us at CarlaMarlas@hotmail.com

## Don't Let Pain Interfere With Your Life!

Dr. Joseph Merckling can treat your problems giving you relief so you can live a more complete and full life.

**You and your body deserve it! Pain can become a thing of the past!**

**Providing Relief For:** Neck and Back Pain/Stiffness • Headaches • TMJ Pain  
Sciatica • Scoliosis • Shoulder and Knee Pain/Stiffness • Postural Problems

**Digital Spinal X-Rays - Custom Digital Orthotic scanning available**

Most Insurances accepted • Auto Accidents/No Fault • Worker's Comp

**Merckling Family Chiropractic, P.C.**

Dr. Joseph R. Merckling, 16-2 Station Road, Bellport Village - 631-286-2300

Find us on Facebook

Massage Therapy  
and Acupuncture  
by Anthony  
Cerabino



Presents  
**LONI ACKERMAN**  
in

# SUNSET BOULEVARD

Music By  
**ANDREW LLOYD WEBBER**

Book and Lyrics By  
**DON BLACK and CHRISTOPHER HAMPTON**

Based on The Film By  
**BILLY WILDER**

With  
**ROBERT J. TOWNSEND**  
**PHILIP HOFFMAN**  
**ROBERT ANTHONY JONES**

**JOEL ROBERTSON**  
**ANDREW PANDALEON**

Producer  
**PAUL ALLAN**

Associate Producer  
**JEFF BELLANTE**

General Manager  
**DOM RUGGIERO**

Production Manager  
**BRIAN LOESCH**

Artistic Director  
**ROBIN JOY ALLAN**

Company Manager  
**MICHAEL BAKER**

Lighting Design  
**DOUG HARRY**

Set Design  
**TODD IVANS**

Costume Design  
**TREVOR BOWEN**

Production Stage Manager  
**JOHN "JP" POLLARD**

Musical Direction by  
**JEFFREY BUCHSBAUM**

Associate Choreographer  
**DAVID ENGEL**

Directed and Choreographed by  
**LARRY RABEN**

TM © 1992 The Really useful Group Limited  
The Really useful Group, Ltd. Gratefully acknowledges the role of Amy Powers in the lyric development of *Sunset Boulevard*.  
*Sunset Boulevard* is presented through special arrangement with R & H Theatricals and The Really useful Group, Ltd. www.mhttheatricals.com



# CAST OF CHARACTERS

(in order of appearance)

Norma Desmond ..... LONI ACKERMAN\*  
 Joe Gillis ..... ROBERT J. TOWNSEND\*  
 Max Von Mayerling ..... JOEL ROBERTSON\*  
 Betty Schaefer ..... GAIL BENNETT\*  
 Cecil B. DeMille ..... PHILIP HOFFMAN\*  
 Artie Green ..... ANDREW PANDALEON\*  
 Sheldrake ..... STEVE LUKER\*  
 Manfred ..... ROBERT ANTHONY JONES\*  
 Salesmen ..... STEVE LUKER\*, NATHAN ANDERSON, DEREK BASTHEMER, PEYTON CRIM,  
 JOEL INGRAM, MATTHEW NOWAK, BRIAN C. VEITH  
 Astrologer ..... CHELSEY WHITELOCK  
 Masseur ..... CAITLIN FISCHER  
 Beauticians ..... KAREN WEBB, MEGAN WEAN  
 Analyst ..... RACHEL RHODES-DEVEY  
 Doctor ..... KRISTINE BENNETT  
 Ensemble ..... NATHAN ANDERSON, DEREK BASTHEMER, KRISTINE BENNETT,  
 PEYTON CRIM, CAITLIN FISCHER, KEVIN GUTCHES,  
 JOEL INGRAM, MATTHEW NOWAK, RACHEL RHODES-DEVEY,  
 BRIAN C. VEITH, MEGAN WEAN, KAREN WEBB, CHELSEY WHITELOCK  
 Dance Captain ..... MEGAN WEAN

## UNDERSTUDIES

Norma Desmond ..... CHELSEY WHITELOCK  
 Joe Gillis ..... ANDREW PANDALEON\*  
 Max Von Mayerling ..... ROBERT ANTHONY JONES\*  
 Betty Schaefer ..... RACHEL RHODES-DEVEY  
 Cecil B. DeMille ..... MICHAEL EDWARD BAKER\*  
 Artie Green ..... JOEL INGRAM  
 Sheldrake ..... MICHAEL EDWARD BAKER\*  
 Manfred ..... KEVIN GUTCHES

## MUSICIANS

Conductor / Keyboard 1 ..... JEFFREY BUCHSBAUM  
 Keyboard ..... JUSTIN F. FISCHER  
 Keyboard ..... JOHN P. MURPHY  
 Keyboard ..... KATIE DUKE  
 Reed # 1 ..... MICHAEL KENDROT  
 Reed # 2 ..... MITCHELL KAMEN  
 Drums ..... KEVIN MORAN



The Musicians employed in this production are members of the American Federation of Musicians.



\*Actors employed in this production are members of Actors' Equity Association, the union of Professional Actors and Stage Managers in the United States.



The Director/Choreographer is a member of the Society of Stage Directors and Choreographers, Inc., an independent national labor union.

**WARNING** – The photographing or sound recording of any performance is strictly prohibited. Gateway Playhouse offers a wireless sound enhancement system for the hearing impaired. Inquire at the box office for more information.

**FIRE NOTICE** — The exit indicated by a red light and sign nearest to the seat you occupy, is the shortest route to the outside. In the event of fire or other emergency, please do NOT run. WALK to that Exit. However, under normal circumstances, when leaving the Theatre, use the center rear exits. SMOKING is prohibited in the BUILDING, as required by the Suffolk County NO SMOKING Ordinance. Smoking in any area designated "No Smoking" renders the offenders subject to a fine, or imprisonment, or both.



LONI ACKERMAN



NATHAN ANDERSON



DEREK BASTHEMER



GAIL BENNETT



KRISTINE BENNETT



PEYTON CRIM



CAITLIN FISCHER



KEVIN GUTCHES



PHILIP HOFFMAN



JOEL INGRAM



ROBERT ANTHONY JONES



STEVE LUKER



MATTHEW NOWAK



ANDREW PANDALEON



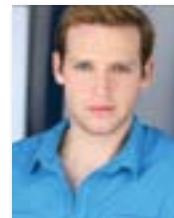
RACHEL RHODES-DEVEY



JOEL ROBERTSON



ROBERT J. TOWNSEND



BRIAN C. VEITH



MEGAN WEAN



KAREN WEBB



CHELSEY WHITELOCK

# BROOKHAVEN MEMORIAL HOSPITAL MEDICAL CENTER



## THE BROOKHAVEN PROMISE

Brookhaven Memorial Hospital Medical Center will provide our patients and their families with personalized health care from a team of highly skilled professionals in a comforting environment, using advanced technologies to deliver the highest levels of quality and safety.



Memorial Hospital Medical Center

Physician/Dental Referral Service (800) 694-2440

BROOKHAVEN MEMORIAL HOSPITAL MEDICAL CENTER

631-654-7100

101 Hospital Road • Patchogue, New York 11772 [www.BrookhavenHospital.org](http://www.BrookhavenHospital.org)

## MUSICAL NUMBERS

### ACT I

Overture.....	Orchestra
Scene 1: Exterior / Dawn: The House on Sunset	
"Prologue" .....	Joe
Scene 2: Exterior / Day: Paramount Studios	
"Let me Take You Back Six Months" .....	Joe
"Let's Have Lunch" ..Joe, Betty, Artie, Sheldrake, & Ensemble	
"Betty's Pitch" .....	Betty & Joe
Scene 3: Exterior / Day: On the Road	
Car Chase .....	Orchestra
Scene 4: Exterior / Day: The Garage On Sunset	
After Car Chase .....	Joe
Scene 5: Interior / Day & Evening: The House on Sunset	
"Surrender" .....	Norma
"Once Upon a Time" .....	Norma
"With One Look" .....	Norma
After "With One Look" (Underscore) .	Orchestra
"Salome" .....	Norma & Joe
After "Salome" (Underscore) .....	Orchestra
Scene 6: Interior / Night: Norma's Guest House	
"The Greatest Star of All" .....	Max
After "The Greatest Star" .....	Orchestra
Scene 7: Interior / Evening: Schwab's Drugstore	
"Schwab's Drugstore" .....	Joe, Betty, Artie, & Ensemble
"Girl Meets Boy (Part 1)" .....	Joe & Betty
"Girl Meets Boy (Part 2)" .....	Joe, Betty, & Artie
Scene 8: Exterior / Night: The Terrace on Sunset	
Terrace Underscore .....	Orchestra
"I Started Work" .....	Joe & Max
Scene 9: Interior / Day : The House on Sunset	
"New Ways To Dream" .....	Joe & Norma
December (Underscore) .....	Orchestra
Organ Music .....	Orchestra
"Today's The Day" (Underscore) .....	Orchestra
Transition to "The Lady's Paying" .....	Joe
Scene 10: Interior / Day: The House on Sunset	
"The Lady's Paying" .....	Norma, Manfred, Joe, & Salesmen
Scene 11: Interior / Night: The House on Sunset	
New Year Tango.....	Joe & Max
"The Perfect Year" .....	Norma & Joe
After "The Perfect Year" .....	Orchestra
(Underscore) .....	Orchestra
"I Had to Get Out" .....	Joe
Scene 12: Interior / Night: Artie Green's Apartment	
"This Time Next Year" .....	Joe, Betty, Artie, & Ensemble
After "This Time Next Year" .....	Orchestra
(Underscore).....	Orchestra
"Auld Lang Syne".....	Artie, Betty, & Ensemble
Scene 13: Interior / Night: The House on Sunset	
End Of Act One .....	Orchestra

### ACT II

Entr'Acte.....	Orchestra
Scene 1: Exterior / Day: Norma's Swimming Pool	
"Sunset Boulevard" .....	Joe
"There's Been a Call" .....	Norma & Joe
Scene 2: Exterior / Day: Transition to Paramount Studios	
"It Took Her Three Days" .....	Joe
Scene 3: Exterior / Day: Paramount Studios	
Norma in The Studio .....	Orchestra
"As If We Never Said Goodbye" .....	Norma
"Paramount Conversations" .....	Betty, Joe, Sheldrake, Max, Norma, & DeMille
"Was That Really Norma Desmond" .....	DeMille
Scene 4: Interior / Night: Betty's Office at Paramount	
"Girl Meets Boy (Reprise)" .....	Joe & Betty
Scene 5: Interior / Day: The House on Sunset	
"A Little Suffering" .....	Astrologers, Masseurs, Beauticians, Analyst, & Doctor
Underscore into "I Should Have Stayed There" .....	Orchestra
"I Should Have Stayed There" .....	Joe
Scene 6: Interior / Exterior / Night: Betty's Office/ Paramount Backlot	
Script Completed Underscore .....	Orchestra
Water Cooler Underscore.....	Orchestra
"Too Much In Love To Care" .....	Betty & Joe
After "Too Much In Love To Care" .....	Orchestra
Scene 7: Exterior / Night: The House on Sunset	
Max & Joe Underscore .....	Orchestra
"New Ways To Dream (Reprise)" .....	Max
"Phone Call" .....	Norma
Scene 8: Exterior / Interior / Night: The House on Sunset	
Betty On The Road .....	Orchestra
"What's Going on Joe?" .....	Betty, Joe, & Norma
Scene 9: Exterior / Interior / Dawn : The House on Sunset	
Start of The Final Scene .....	Norma
The Final Scene .....	Norma & Max
"Curtain Calls" .....	Orchestra

### Special Thanks To

### Michelle's Auntie Q's In Barntique Village

327 MONTAUK HIGHWAY,  
MORICHES, NY  
[www.auntieqsbarntique18.blogspot.com](http://www.auntieqsbarntique18.blogspot.com)  
(516) 314-1162





## It's in the Details

Expert Auto Collision Repairs

All Insurance Accepted

1791 Montauk Hwy, Bellport, NY 11713

**286-2116**



Quality Service, Diagnostics and Repair

11 Station Rd., Bellport, NY 11713

**803-6935**



Norman Orsinger Woodworking Ltd.

631.289.0846 - Showroom

516.449.0986 - Cell

*The finest in custom furniture,  
cabinets, and millwork.*

*For more information visit our  
website or call us today!*

[www.NormanOrsingerWoodworking.com](http://www.NormanOrsingerWoodworking.com)

## Theatre Special - 10% OFF Dinner

### For The Good Times!

Enjoy the warm, welcoming atmosphere and fine food at the BrickHouse Brewery & Restaurant and **SAVE 10% OFF your entire dinner bill.**

Just present your tickets for before dinner dining, or your stub for after dinner dining, and receive 10% Savings.

10% savings valid 2 hours prior or after show date and time at the Gateway Playhouse or Patchogue Theatre. Cannot be combined with any other discount offer. Valid for lunch or dinner.



Open Daily 11 AM

67 W. Main St., Patchogue (631) 447-2337 • (631) 447-BEER

[www.brickhousebrewery.com](http://www.brickhousebrewery.com)



**LONI ACKERMAN** (*Norma Desmond*) turned 19 years old while making her Broadway debut in *George M!* She went on to appear in leading roles on Broadway including, *Evita*, *Cats*, *So Long 174th Street*, *The Magic Show*, and *No No Nanette*. She is proud to work with such an exciting team of cast and crew during her Gateway debut in *Sunset Boulevard*. Most recently Loni was a Member of the Marvell Rep Company in New York City (Artistic Director Lenny Lebowitz). Loni is married to Broadway sound designer Steve Canyon Kennedy and together have two sons- Jack and George. This performance is dedicated to the late Tony Stevens.

**NATHAN ANDERSON** (*Salesman, Ensemble*) is thrilled to be returning to the Gateway Playhouse. Previously with Gateway he was in the ensemble of *A Christmas Carol* and understudied Mr. Fezziwig/Jacob Marley. Regional and tour credits as follows: *The Mayor of Whoville*, in *Seussical the Musical*, Marcelus Washburn, in *The Music Man*, and Mr. Fezziwig in the tour of *Scrooge the Musical!* with the New York Stage Originals. He would like to dedicate this show to Booch, and the Candices! Here's to saying 'Yes' to the Universe!

**DEREK BASTHEMER** (*Salesman, Ensemble*) Derek's love of Wisconsin cheese is only eclipsed by his passion for musical theater. A Manhattan School of Music graduate, he is thrilled to make his Gateway Playhouse debut with *Sunset Boulevard* and *Sweeney Todd*. Additional studies: The New England Conservatory and HB Studio. A big thanks to his friends, teachers and especially his family for their support and love.

**GAIL BENNETT** (*Betty Schaefer*) Played the title role in *Mary Poppins* over 65 times on the National Tour and Usherette/ Lick-me Bite-me in the Las Vegas company of Mel Brooks' *The Producers*. Other regional favorites: Eliza (*My Fair Lady* opposite Tony winner Jefferson Mays), Maria (*The Sound of Music*), Janet (*The Drowsy Chaperone*), Irene (*Hello, Dolly*), Claudia (*NINE*), Annie (*Annie*,

*Get Your Gun*), Jellylorum (*Cats*). Gail has also starred in several feature films, adores voice-over work, speaks French, and runs marathons.

**KRISTINE BENNETT** (*Doctor, Ensemble*) is thrilled to be returning to Gateway after appearing as a Silly Girl in 2008's production of *Beauty and the Beast*. Earlier this year Kristine was on the National Tour of *The Music Man*. Other favorite credits include: *Oklahoma* (Ocean City Theatre Company and LaComedia), *The Fantasticks* and *A Fireside Christmas* (The Fireside Theatre), and *Miracle on 34th Street* (Jersey Shore Productions.) Kristine is a graduate of the Cincinnati Conservatory of Music. Thanks to the Gateway family and loved ones. Romans 5 1-5. [www.KristineBennett.blogspot.com](http://www.KristineBennett.blogspot.com)

**PEYTON CRIM** (*Salesman, Ensemble*) is grateful to settle down for a few months and perform with Gateway! A Dallas native, he graduated from Oklahoma City University before making the move to New York. Since then, he has been seen in *The Music Man* (National Tour), *Ring of Fire*, *The Mikado*, *La Boheme*, *Oh Coward!*, and *Into The Woods*. Thanks to his Family and Friends for their support, and The Waffle Cart for its motivation.

**RACHEL RHODES-DEVEY** (*Analyst, Ensemble, U/S Betty Schaefer*) is thrilled to be back at Gateway after appearing in last summer's production of *Hello, Dolly!* NYC: Mary Arena in *The Human Comedy* and *Children of Eden* (APAC). Regional: The John Engeman Theatre, Maine State Music Theatre, Arts Center of Coastal Carolina, and Forestburgh Playhouse. Next, Rachel will be shipping off on that national tour of The Lincoln Center Theater's production of *South Pacific*. Proud graduate of Oklahoma City University. Many thanks to Dustin and Judy Boals Inc, and much love to my family for their never-ending support.

## SHIRLEY SLEEP SHOPPE

*We're Not Just Beds Anymore!*

Furniture  
for the  
entire  
house



618 Montauk Highway • Shirley • 281-0376



LANDSCAPE SERVICES

*Design • Patios • Ponds*

Matt Palermo

PO Box 652 • Bellport, NY 11713  
631.286.0941 • [www.lawntasia.com](http://www.lawntasia.com)

# We've been expecting you.

Ready to be recognized as a Premier client around the world?

Local and global recognition. Dedicated Relationship Manager. Seamless global banking.  
Start a Premier relationship today.

[us.hsbc.com](http://us.hsbc.com) 1-800-975-HSBC

HSBC PREMIER

Deposit products in the United States offered by HSBC Bank USA, N.A. or HSBC National Bank USA. Both are Member FDIC. ©2007 HSBC Bank USA, N.A.

**Patchogue Office**  
325 E. Main St.  
Patchogue, NY 11772  
631-475-2600

**Bellport Office**  
20 Station Road  
Bellport, NY 11713  
631-286-3800

**Mastic Office**  
1718 Montauk Hwy.  
Mastic, NY 11950  
631-281-6400

## Now is the time for a fiscal check-up

No more excuses for not knowing how your finances and investments line up with your life goals and retirement expectations.

Call today for a free consultation, and we'll explore strategies for protecting yourself and helping you prosper today, tomorrow and into the future.

Together we'll go far



**Richard B. Miller**

Assistant Branch Manager

First Vice President - Investment Officer

500 W. Main St., Ste. 105, Babylon, NY 11702

631-893-1322

Investment and Insurance Products: ► NOT FDIC Insured ► NO Bank Guarantee ► MAY Lose Value

Wells Fargo Advisors, LLC Member SIPC, is a registered broker-dealer and a separate non-bank affiliate of Wells Fargo & Company. ©2009 Wells Fargo Advisors, LLC. All rights reserved. 0509-2351 [74021-v1]A1266

# NEXTSTOP magazine

The best resource for events  
and activities from  
Manhattan to Montauk!



NextStop Magazine...  
*we'll get you there.*

[www.NextStopMagazine.com](http://www.NextStopMagazine.com)  
**631 995 3024**

**CAITLIN FISCHER** (*Masseur, Ensemble*) is excited to be making her debut at Gateway Playhouse! Regional credits include *Magnolia* in *Show Boat*, *Lily* in *The Secret Garden*, and Mrs. Crachit in *A Christmas Carol*. Other favorite roles are Eliza in *My Fair Lady*, Maria in *West Side Story*, Catherine in *A View from the Bridge*, and Susanna in *Le nozze di Figaro*. She received her Master of Music from the Peabody Conservatory and her Bachelor's degree from Syracuse University.

**KEVIN GUTCHES** (*Ensemble, U/S Manfred*) is thrilled to be returning to Gateway for the summer! He was previously seen at Gateway in *Legally Blonde*, *Spamalot!* and in last summer's *Happy Days*. Other Credits: 30<sup>th</sup> Anniversary Tour of *Annie* (Rooster u/s), *The Full Monty* (Ethan Girard), *Mystery of Edwin Drood* (Deputy). Kevin holds a B.A. in Theatre from Wagner College. He would like to thank his family and friends for all the love and support; loves those who support live theatre!

**PHILIP HOFFMAN** (*Cecil B. Demille*) Philip has appeared in the original casts of nine Broadway productions, including *Into The Woods*, *Falsettos*, *Fiddler On The Roof* (2004), *The Scarlet Pimpernel* and *A Catered Affair*. Off-Broadway credits range from *All In The Timing* to *Yiddle With A Fiddle*. National tours: *Jekyll & Hyde* (Utterson) and *Titanic* (Ismay). He appears on several cast albums. A proud member of Actors' Equity Association since 1979. Website: [www.1philiphoffman.com](http://www.1philiphoffman.com)

**JOEL INGRAM** (*Salesman, Ensemble, U/S Artie Green*) - is very excited to be performing at Gateway Playhouse this summer! Earlier this season, Joel was seen as Warner in *Legally Blonde*. A recent grad from University of Oklahoma, Joel just finished the national tour of *Legally Blonde*. Regional Credits: *The Who's Tommy* (Lover), *Jesus Christ Superstar* (Bartholomew), *Bye Bye Birdie* (Conrad), *Noises Off* (Tim), *Little Me*, *Fiddler on the Roof*, *Chess*. Special thanks to my amazing Parents, Family, Friends, and MTXers for all their love and support!

# WHO'S WHO

**ROBERT ANTHONY JONES** (*Manfred, U/S Max Von Mayerling*) is thrilled to be returning to Gateway for his very first summer season. His recent Gateway credits include double rounds of *A Century of Christmas* and Mr. Fezziwig in *A Christmas Carol*. He was last seen in NYC at Madison Square Garden in the National Tour of *The 101 Dalmatians Musical*, where he originated the role of Jinx Baddun (directed by Jerry Zaks, with choreography by Warren Carlyle). He also originated the roles of the dresser/hermit/grammer Canty in the hit off-Broadway musical *The Prince and the Pauper*, and can be heard on the Original Cast Recording on Jay Records and iTunes. Regional favorites include: Max in *The Producers* (West Virginia Public Theatre), Amos in *Chicago* (Riverside Theatre), and Sancho in *Man of La Mancha* (Theatre by The Sea, playing opposite Bruce Winant, who he will happily play opposite again in *Sweeney Todd* at Gateway this summer). RAJ is also the host of a children's television series, "Drew's Famous Magical Jukebox," "Sing A Long and Dance A Long." [www.robertanthonyjones.com](http://www.robertanthonyjones.com)

**STEVE LUKER** (*Sheldrake*) Delighted to return to Gateway for his 6th production, Steve's been in over 100 legit shows from Broadway (*42nd Street*) to National and International Tours (*Footloose*, *42nd Street*, *Radio City*) to Off-Broadway (the *P Monologues*) to Regional Theatres (North Shore Music Theatre, Goodspeed, The Engeman Theatre, Theatre by the Sea, Vero Beach Riverside, New Harmony Theatre, Mill Mountain Playhouse, Mt. Gretna Theatre, Theatre Under the Stars, Cross Roads Theatre, and many more. He was recently nominated for a Barrymore Award for Best Actor for the role of Sewerman in Bristol Riverside's *Dear World*. On TV, he's been a principal in such shows as "Cosby," "Law and Order," "Hope and Faith," "One Life to Live," "As the World Turns," etc. and in dozens of commercials and voice overs. Much thanks to the Luker and Noona families, especially wife, Susie.



## ROE AGENCY INC.

*Insurance Since 1898*

*Personal & Commercial  
Life & Health*

- \* Homeowners \* Automobile \*
- \* Flood \* Boat \* Umbrella \*
- \* Commercial Property \*
- \* Liability \* Business Auto \*

*All Forms of Insurance  
Call us for a quote!*

♦ 125 East Main Street ♦  
♦ Patchogue, New York 11772 ♦  
Phone: 631.475.4000  
Fax: 631.475.7648

*Richard York*  
OF PATCHOGUE



631-475-1047  
14 South Ocean Ave.  
Patchogue

From Patchogue Theatre  
entrance, 1 block west  
and four stores south

**Quality Footwear for Men, Women  
and Children Since 1927**

- Friendly, Caring & Knowledgeable Service
- Areas Largest Selection of Sizes & Widths AA-EEEE

Rockport, Easy Spirit, Florsheim, New Balance, Stride Rite, Teva, Timberland, Skechers, Ros Hommerson, Hotter, Keds, Reebok, Dyeables, Topsider, Soft Spots, Clarks, Naturalizer, Hush Puppies, Daniel Green, Foamtreads, Toe Warmer Boots, Shape-Ups, Fitflop, etc.

**10% OFF** any purchase with ad only  
Excludes Easy Spirit, Dr. Martens  
& other offers. Expires 12/31/11

*A night out at*  
**THE THEATRE**  
MAKE IT UNFORGETTABLE...



**ROSE**  
JEWELERS

Patchogue 74 E. Main St.  
631.475.1441  
Southampton 57 Main St.  
631.283.5757  
www.rosejewelersny.com

**PANDORA™**  
UNFORGETTABLE MOMENTS

**MATTHEW NOWAK** (*Salesmen*) is a Long Island native who is excited to be returning to the Gateway stage! Past seasons include *Miss Saigon* and *Dirty Rotten Scoundrels*. He has worked on numerous readings, workshops and concerts including *Rags* in concert with Carolee Carmello and Eden Espinosa. Matthew holds a BFA in musical theatre from The Boston Conservatory. Many thanks to the Gateway family for this opportunity! And of course Matthew wouldn't be here without the support and love from his mom.

**ANDREW PANDALEON** (*Artie Green, U/S Joe Gillis*) is honored to be returning to Gateway Playhouse after playing Richie Cunningham in last year's production of *Happy Days*. Past credits include: *City Club* (Chaz), *The History of War* (Titus), *The History Boys* (Scripps), *Laughter on The 23rd Floor* (Brian), and *Play it Cool* (Will). This fall he will be at Northern Stage for *Romeo & Juliet* (Paris). Andrew holds a BA in theater from UCLA. Thank you to Bill, Ben and Jeffrey @ Peter Strain & Associates and most of all to Mom and Dad for their unyielding love and support!

**JOEL ROBERTSON** (*Max*) was featured in the Broadway production of *Jekyll & Hyde* as the Bishop of Basingstoke, directed by Robin Phillips, and the Movie starring David Hasselhoff, directed by Gerry Zaks. He was in the original production of *Parade* directed by Hal Prince at the Vivian Beaumont Theatre at Lincoln Center and received standing ovations for nine years in *Les Misérables*, six years in the original cast of *Cats*, both directed by Trevor Nunn, and played Fyedka in the Broadway and National Touring production of *Fiddler on the Roof* at the NY State Theatre starring Herschel Bernardi, directed by Jerome Robbins. He has been seen on *All My Children* as Mort Greenway, and thrilled audiences as Santa Claus in *Radio City Music Hall's Christmas Spectacular* in Chicago. Mr. Robertson also performs in many benefits throughout the year and has been featured in Lincoln

## WHO'S WHO

Center's Meet the Artist series. With his wife and Co-founder he created ATC Studios, a Clifton New Jersey Non-Profit Conservatory ([www.atcstudios.org](http://www.atcstudios.org)) for the Dramatic Arts in 1990 and continues to bring vision and quality to those programs, launching the careers of hundreds who dare to dream.

**ROBERT J. TOWNSEND** (*Joe Gillis*) is thrilled to make his Gateway debut. Most recently, Robert toured the country with the *Radio City Christmas Spectacular*, and has also toured in the national and international tours of *Mamma Mia!* (Father Alexandrios), *Grease* (Kenickie), and *Camelot* (Sir Sagamore). Recent regional performances include Man #1 in *My Way* (Music Theatre of Connecticut), Thomas Weaver in *The Story of My Life* (Havok Theatre Company-Los Angeles Stage Alliance Ovation Award), Edward Rutledge in 1776 (Musical Theatre West-Broadway World Award), The Pharaoh in *Joseph...* (CLO of South Bay Cities), and Michael in *Smokey Joe's Cafe* (San Diego Musical Theatre). Robert's other selected regional credits include *The Seafarer* (Nicky Giblin-San Diego Rep), *Thoroughly Modern Millie* (Trevor Graydon-Sacramento Music Circus), *Jekyll and Hyde* (Title Role-Cabrillo Music Theatre-Ovation Award), *I Love You, You're Perfect...* (Man #1), *Anything Goes* (Billy Crocker) and *Miss Saigon* (Chris). TV/Commerical-The One Minute Soap Opera, The Chronicle, Tom's of Maine, Time Warner Cable. As always, love to his wife Jill without whom none of this would be possible... [www.jillandrobert.com](http://www.jillandrobert.com)

Dave's  
**Bellport**  
Cold Beer & Soda

Over 900  
Varieties of Beer  
Regular Beer  
Tastings  
Propane Refills

8-Tap Growler Station • Knowledgeable Staff • Beer • Soda  
Kegs • Ice • Snacks • Cigarettes • Fine Cigars • Home Delivery

417 Station Road • Bellport NY  
**631.286.0760**  
[www.bellportbeer.com](http://www.bellportbeer.com)

**10% Off**  
with this ad  
not including tobacco products  
or sale items



# WHO'S WHO

**BRIAN C VEITH** (*Salesman, Ensemble*) is thrilled to be working at Gateway on *Sunset Boulevard* and *Sweeney Todd*. Originally from California, he feels lucky to be spending his summer performing near the beach. Past shows include *Little Women*, *Ring of Fire*, *Follies*, *Annie Get Your Gun* and *Secret Garden*. Thanks to Mom, Dad, family (both real and theatre), everyone at Gateway and the cast and crew. Marymount Manhattan College graduate. For more, check out [BroadwayDemo.com/BrianCVEith](http://BroadwayDemo.com/BrianCVEith). Psalms 103:1-5 Bless the Lord!

**MEGAN WEAN** (*Dance Captain, Beautician, Ensemble*) An Ohio Native and a proud graduate from Wright State University with a B.F.A in Musical Theatre/Dance, Megan is honored to be back at Gateway. Previous Gateway credits include *A Christmas Carol* and *Happy Days*. She was just recently seen on the National Tour of *A Chorus Line*. Some regional credits: North Shore Music Theatre, Ogunquit Playhouse, Maine State Music Theatre, Arrow Rock Lyceum Theatre, Beef and Boards, The Palace Theatre, The Barn Theatre. Love to Dad, Kandis and Scott. It will always be for you Mom!

**KAREN WEBB** (*Beautician, Ensemble*) is thrilled to be a part of the *Sunset Blvd.* cast, making it her sixth show with the Gateway family! Recent credits include: *Singin' in the Rain*, *Jekyll & Hyde*, *Nine* (Westchester Broadway), *Spamalot!*, *Will Rogers Follies*, *Hairspray*, *Hello Dolly*, *A Christmas Carol* (Gateway Playhouse), *Joseph...*, *Cats*, and *The Producers* (Beef and Boards). Making her journey from Ga to NYC she wants to thank her family and friends, old and new, for their continuous support and inspiration. Enjoy the show y'all!

**CHELSEY WHITELOCK** (*Astrologer, Ensemble, U/S Norma Desmond*) *Sunset Blvd* marks Chelsey's seventh show at Gateway. You may have seen her in past Gateway productions *Drowsy Chaperone*, *Dirty Rotten Scoundrels*, *Hairspray*, *Hello Dolly*, *Legally Blonde* and *Spamalot!*. She was seen in the 30th anniversary national tour of

*Annie*. Other favorite roles include Roxie in *Chicago*, Brooke in *Noises Off*, Ado Annie in *Oklahoma!* and Lois in *Kiss Me Kate*. "Love and thanks to the Gateway family, my wonderful husband Mikey and our adorable new additions Banzo and Chickpea."

**JEFFREY BUCHSBAUM** (*Musical Director*) Though Jeffrey is thrilled *Sunset Boulevard* marks his 20<sup>th</sup> production at The Gateway, he does not know where the years have gone. Recent work includes *Man of La Mancha* on Hilton Head Island, Off-Broadway productions of *On Second Avenue* (2 Drama Desk nominations) and *Tallulah's Party* with Tovah Feldshuh. Tours include *A Chorus Line* (Europe/National), *Titanic*, *My One And Only*, *George M*, *Damn Yankees* starring Jerry Lewis and *Phantom of the Opera* (Europe/South America). Jeffrey conceived and arranged *Broadway Rhythm* in Macao, China and *The Magic Of Musicals* in Athens, Greece. He also directed the National tours of *Camelot* and *Mame*, and is the composer of the new musical, *Tupperware!*, which is presently in development. He has taught at NYU and LaGuardia High School for the Performing Arts. Jeffrey spent this season as assistant director and dramaturg on the new independent musical film, *Welcome To Harlem*, which will have its theatrical release this Thanksgiving at the Apollo Theater. Jeffrey is a voice teacher and vocal coach in Manhattan.

**DAVID ENGEL** (*Associate Choreography and Film Sequence Director*) directed and choreographed *The Andrews Brothers* (Actor's Theatre Of Indiana) and *Forever Plaid* (Moonlight Amphitheatre), *I Love You, You're Perfect, Now Change* (The Welk), *Seussical* (Moonlight). Other choreographic credits include *Singin' In The Rain* (LA Ovation Nomination), *More Magic* (Canadian Tour), *STAGE Benefit* Los Angeles. He is an award winning actor, dancer and film editor.

**LARRY RABEN** (*Director*) returns to The Gateway after previously directing Mel Brooks' *The Producers*. In NY, he directed last summer's world premiere of Tony winner

## CLARE ROSE PLAYHOUSE

**Come and enjoy a comedy or  
a drama in our intimate theater  
on the picturesque Long Island Campus  
of St. Joseph's College.  
Stay tuned for a full list of  
performances for the 2011-12 year.**

**The Clare Rose Playhouse**  
St. Joseph's College  
155 West Roe Boulevard  
Patchogue, NY 11772

**Shows run throughout scheduled weekends  
and tickets for most shows are \$15 per person;  
\$12 for students and seniors. Group rates and dinner  
and theater packages are also available.**

**For more information, call the Playhouse box office at 631.654.0199  
or visit [www.sjcny.edu](http://www.sjcny.edu).**

Joe DiPietro's *Falling For Eve* Off-Broadway at The York Theatre. Most recently he directed *The Wedding Singer* for Musical Theatre West. He won the LA Ovation Award for Best Direction for *Singin' In The Rain* (Cabrillo Music Theatre). He wrote and directed *Rodger & for Reprise!*. A founding member of Coyote StageWorks in Palm Springs, he directed *Greater Tuna* (Desert Star Award Best Direction) and *A Tuna Christmas*. Other credits: *Sweet Charity* in Buenos Aires (Best director Ace nominee), *Bark!* (Inland Empire Award Best Direction), *Always Patsy Cline* (Welk), *The Velveteen Rabbit* (Promenade Theatre NY). *Never Gonna Dance* (with Tony winner Harriet Harris), *The Thing About Men*, and *I Love You, You're Perfect, Now Change*. He was the assistant director on the original NY production of *Forever Plaid* and has directed numerous regional and international stagings as well as *Plaid Tidings*. He directed and co-authored

*Hollywood's Heyday* (Welk) and *More Magic* (Canadian Tour). Proud member of SDC.

**JOHN "JP" POLLARD** (*Production Stage Manager*) returns for his third show of the 2011 Season here at Gateway, having previously stage managed the critically acclaimed productions of *West Side Story* and *Legally Blonde – The Musical*. JP got his start in the theatre over 30 years ago while working alongside the likes of Kaye Ballard, Imogene Coca, Cesar Romero, Betty Garrett and many others at Earl Holliman's Fiesta Dinner Playhouse, in his hometown of San Antonio, TX. Since those early years, he has stage managed from the East Coast to the West Coast and everywhere in between. Career highlights include the seven-month, SRO San Francisco run of *The Search For Signs of Intelligent Life In The Universe* starring Tony and Emmy Award-winning actress Lily Tomlin, four seasons at New Jersey's own Paper Mill Playhouse, and an International

tour of *Grease* which toured both Germany and Switzerland. In addition to theatre, he has also spent time as personal assistant to actress Sarah Jessica Parker. Proud Equity member since 1983. "My work, as always, is dedicated to my family and friends." [www.johncourtneypollard.com](http://www.johncourtneypollard.com)

**ROBIN JOY ALLAN** (*Artistic Director*) In her life bio, Robin includes 40 years performing, casting, teaching and directing, with much of that overlapping, taking her from one coast to the other and back. The films "When Harry Met Sally," "Lord Of The Flies," "Parenthood," and "Ghost" are on her casting resume as well as one-hundred and thirty-nine Main Stage productions for Gateway. She feels blessed and hopes to continue to give back to the universe as much as she has been given. Robin lives in Brookhaven Hamlet with her amazing daughter Hayley and constant companions Lucy Dog, Mopsy and Momma Kitty.

**PAUL ALLAN** (*Producer*) has been producing the seasons here at Gateway since the 1980's. Paul's grandfather (Harry Pomeran) was the first producer of Gateway in 1950, followed by his uncle (David Sheldon), his parents (Ruth and Stan Allan), and together with his sister Robin. Paul has been able to work in NYC on various shows in different capacities, run a touring company with shows traveling around the country and abroad, operate a sister theatre in Connecticut, act as consultant and facilitator for the restoration and reopening of the Patchogue Theatre, and maintain a set rental business - where Gateway scenery is used in theatres across the country after appearing on the Gateway stage. Paul appreciates, admires and honors his family's dedication to the arts and is proud to help continue the legacy. Paul lives in Bellport with his wife Annmarie and their 2 children - Luke 6 and Alexa 4. ■



**A PUB OF THE OLD STYLE**  
*Pub Fare That Will Make Your Tongue Smile*

*Relax Before or After The Show — Full Bar & Menu*  
 Kitchen Open 11 AM to 11 PM (Mon. thru Sat.) — Bar 'til 1 AM

70 North Ocean Avenue • Patchogue • (631) 289-1900 • [www.reeses1900pub.com](http://www.reeses1900pub.com)



**Swezey**  
 FUEL CO., INC. - EST. 1919

**Suffolk's Largest Family Owned Oil Company**

- Automatic Oil Delivery Service
- 24-Hour Emergency Service
- Budget Plans That Pay You Interest
- Expert Installation Of Boilers, Burners, Hot Water Heaters & Pool Heaters

VISA MasterCard

**475-0270**  
 51 RIDER AVE., PATCHOGUE



**PERA BELL**  
*Food Bar*

**New Location!**  
 69 E. Main Street, Patchogue Village  
 right next door to the Theatre

*Everything is the same but the size.*

Happy Hour M-F 4-7 pm  
 Half Price Draught Beer • Half Price Glass Wine  
 \$6 Chop House Burger (bar area only)

Daily Chalkboard Specials  
 All cocktails made with fresh squeezed juices

Live Music Friday & Saturday 9pm - 12am

Reservations online at  
[www.perabellfoodbar.com](http://www.perabellfoodbar.com) • 631-447-7766



## MANY SUCCESS STORIES. ONE BANK.



*Let us put you  
in the picture.*



41 East Main St. | Patchogue, NY 11772 | 631.923.1495 | www.bridgenb.com

Begin with a refined palate,  
pair with the showmanship of  
our Nakama hibachi chef  
and experience...

*The art of dining*

CIRCLE OF FRIENDS  
友

**NAKAMA**

Japanese Steakhouse, Sushi Bar and Lounge

14 Station Road, Bellport, NY 11713 (in the heart of Bellport Village)

631.803.8236



**\$5 OFF**

any two lunch entrees

Dine in only please  
With this coupon  
Not valid on holidays or  
with other offers  
Good thru 9/1/11



**\$10 OFF**

any two dinner entrees

Dine in only please  
With this coupon  
Not valid on holidays or  
with other offers  
Good thru 9/1/11

The Gateway To The Future...

A *Gala* EVENT  
July 23rd

Guests mingled and Broadway stars Dan Cooney and Luann Aronson entertained, as they crooned by the grand piano in the lobby. Then, an emotional tribute was held on the Gateway Playhouse stage to honor founders and siblings, Ruth Pomeran Allan, Sally Pomeran Harris, and David Sheldon with an historical video narrative, documenting the family and early days at Gateway. They were given a Certificate of Achievement by the new Board of Directors and the presentation was followed by a rousing performance of the student production of *The Who's Tommy*. The party went on into the night with an exciting silent auction full of priceless items, a sit down dinner catered by executive chef John Vaeth, with more Broadway performances, and the evening culminated with music and dancing under the grand tent featuring Long Island's own big swing band, *Black Tie Affair*. Don't miss out on next year's event!

**Thanks to all who attended our first annual Fundraising Gala, "Gateway to the Future" which was held Saturday, July 23 2011 in order to celebrate our new non-profit status.**

Ruth Pomeran Allan, Sally Pomeran Harris, Jimmy and Nancy Avino, Meredith Avino, Roy and Elaine Bradbrook, Joseph Cestaro, Thomas Connelly, Erna and John Cuenin, Alun Davies, Alexandra Diamond and Jeff Fuiz, Laurel Durenberger, Bob Durkin, Therese Ebarb, Gale Edwards, Judy Fortuna-Ince, Joe Franco, Marianne Gelber, Jim and Diane Giattino, Jane Graham and Husband, Nancy Hollander, William Johnson, Jessica Kelly, Edward & Barbara Knowles, Steven Laird and Suzanne Donaldson Party, Raymond Lecuyer, Frank and Diane Lento, Pamela Lerner, Linda Leuzzi, Pat Mankowski, Michele OKeefe, Dan and Carol Rieb, Billy and Monica Rignola, Matt and Alison Scolin, Kristen Rohde, Bob and Louann Tuzza, Joseph & Patricia Vandewethering, Frederick and Marna Varney, Sean Varney

## CONTRIBUTE TO THE FUTURE OF THE ARTS

"Thanks to all of our friends in the community who have already made generous contributions to the Performing Arts Center of Suffolk County. It is people like you who will keep the arts alive in Bellport!"

### FAN CLUB \$25 - \$50

Joseph Grinere  
Anthony Psaris

### CAST MEMBER \$250 - \$500

Isabella Rossellini  
Patricia Trainor  
Michael and Hwasoon Mullaney

### TALENT SCOUT \$50 - \$100

Joyce Gambina  
Robert Falco  
Joan Mathie  
Ellen Masterson

### BACKSTAGE PASS \$500 - \$1000

Catherine Ann Conneally  
Sue Carlacci

### FRONT ROW VIP \$1000+

Francis J. Palamara  
Carol Esler  
Tom Connelly

### STAGE HAND \$100 - \$250

Gregory and Marilyn Munson  
Connie and Kent Adee  
Cindi and Robert Wellins  
Kerry Golde  
Kathy Palermo  
Diana and Michael Maniscalco  
Gloria Mancuso



Pictured - Gateway Playhouse 2010 Production,  
*I Love A Piano* - Jody Madaras, Kristen Maloney,  
Ashley McKay and Ryan Lammer.

Go to [gatewayplayhouse.org/donate](http://gatewayplayhouse.org/donate) or Call (631) 286-1133 For More Information



# WE HELP CLIENTS CATCH THE BIG FISH!



POP coupon display for Atlantis Marine World. Original oil **painting**, **scanning**, box **design & printing**, and coupon design & printing done for one of our favorite clients!

Mention this ad for a **FREE** marketing consultation.

631 345 2202 :: [INFO@SEARLESGRAPHICS.COM](mailto:INFO@SEARLESGRAPHICS.COM)  
[WWW.SEARLESGRAPHICS.COM](http://WWW.SEARLESGRAPHICS.COM)

## RELEVÉ DANCE CENTRE

*Where everyone is a Star*



- Acro
- Break Dance
- Ballet/Pointe
- Hip-Hop
- Jazz (Funk & Cont.)
- Lyrical
- Pre-School Programs
- Kindergarten
- PreJazz/Tap 1st grade
- Tap (Rhythm & Trad.)

AM & PM CLASSES  
Birthday Parties  
Family Discounts  
**FREE TRIAL CLASS**

33B Montauk Hwy., Blue Point, NY  
**631.472.9322**  
[www.relevedance.com](http://www.relevedance.com)

*Professional training in a nurturing environment*

Music.  
Theatre.  
Drama.  
Comedy.  
Dance.  
Education.

Gateway Playhouse. A treasure trove.

30 branch locations throughout  
Suffolk County.



SUFFOLK COUNTY  
NATIONAL BANK  
[scnb.com](http://scnb.com)

Member FDIC

631.208.2200

## South Country Inn

### Fine Italian Restaurant

Large Variety of Fresh Seafoods  
Steaks • Veal • Chicken • Pasta

Parties for up to 65 people  
& theatre groups.

Open Tuesday - Sunday, Noon-10p.m.  
Reservations recommended

Moderately Priced Entrees  
Prix Fixe Dinners  
Daily Lunch Specials - Tuesday-Sunday  
Daily Dinner Specials

Only 1.9 miles West of The Gateway  
668 South Country Rd., East Patchogue

**758-1919**

[www.SouthCountryInnRestaurant.com](http://www.SouthCountryInnRestaurant.com)



**Complimentary  
Glass of Wine**

with your lunch or dinner when you present  
show tickets or this ad. Not to be combined.

OR

**\$10 Off Any  
Dinner Check Over \$80**

When you present your show tickets or this ad. 1 coupon per couple.  
Not to be combined. Not valid on Holidays. Expires 12/31/11.

# THE GATEWAY PERFORMING ARTS CENTER OF SUFFOLK COUNTY

SUNSET BLVD. — AUGUST 3-20

## BOARD OF DIRECTORS

President..... Paul Allan  
Vice-President..... Bob Durkin  
Secretary..... Gale Edwards

## ADMINISTRATIVE

Executive Producer..... Ruth Allan  
Producer..... Paul Allan  
Associate Producer..... Jeff Bellante  
General Manager..... Dom Ruggiero  
Company Manager..... Michael Baker  
Director of Development/  
Assistant to the Producer..... Scot Patrick Allan  
Administrative Assistant..... Lauren Windsor

## ARTISTIC

Artistic/Casting Director..... Robin Joy Allan  
Associate Casting/Artistic Director..... Jessica Harrison  
Director/Choreographer..... Larry Raben  
Assistant Director/Associate Choreographer..... David Engel  
Musical Director..... Jeffrey Buchsbaum  
Assistant Musical Director..... John P. Murphy  
Lighting Designer..... Doug Harry  
Scenic Design..... Todd Ivans  
Costume Design..... Trevor Bowen  
Resident Wig Designer..... Trent Pcenicni  
Production Photographer..... Jeff Bellante  
Musical Contractor..... Jeff Hoffman  
Sound Consultants..... Dominic Sac, Cody Spencer

## BOX OFFICE

Box Office Manager..... Laurie Hunter  
House Manager..... Joanne Famiglietti  
Box Office Staff..... Beth Harrison, Nadine Hazard,  
Diane Koerber, Christina Lydy-Mills,  
Christina Montaldo, Don Rebar,  
Kyle Reitan, Francesca Welhous

## A Notice About Parking

We strongly encourage our patrons to always park on Gateway grounds. Parking is not allowed on Maplewood Drive north of the back Gateway exit. Parking is also prohibited on the east side of the street (Gateway side). Observe the No Parking signs.

The Village of Bellport has advised us that cars parked in these areas will be ticketed. Please park on the west side of the street, opposite the Gateway fence, between the back exit and South Country Road.

We appreciate your cooperation in making your visit to Gateway as pleasant as possible.

## PRODUCTION

Production Manager..... Brian Loesch  
Production Stage Manager..... John "JP" Pollard  
Technical Director..... Mo G. Guiberteau  
Wardrobe Supervisor..... Marianne Dominy  
Master Electrician..... Rev. Jose "El Jefe" Santiago  
Sound Engineer..... Adam Shubert  
Media Supervisor..... Spencer Padilla  
Prop Master..... Robert Bursztyn  
Wigs & Makeup Supervisor..... Trent Pcenicni  
Assistant Production Manager..... Justin Hoffman  
Assistant Technical Director..... Dennis R. Berfield  
Assistant Master Electrician..... Matthew Daurio  
Shop Foreman..... Charlie J. Bell  
Flyman..... AJ Lebenns  
Scenic Artist..... Keeley Dorwart  
Wardrobe Assistant/Stitcher..... Natalie Ferris  
Technicians..... Alix Claps, Mark Frederick, Don Hanna,  
Maxx Henry, Greg Marullo, Elizabeth Nosewicz

## INTERNS

Company Management Intern..... Cassandra Levey  
Stage Management Interns..... Emma Slaney,  
Bethany Sortman  
Electrics Interns..... Keelia Liptak, Justin Michel,  
Kenneth Nicholas  
Sound Intern..... Zach Ireson  
Wardrobe Interns..... Amber Mallon,  
Samantha Abbott, Grace Czerniawski  
General Technician Interns..... Rob Brey, Max Fehr,  
Eddie Massari, Sean McConaughy,  
Michael Vultaggio

## FACILITIES

Facilities Manager..... Mark Frederick  
Concessions and Hospitality Manager..... Blake Armitstead  
Cleaning Staff..... Elio Sanchez, Maria Sanchez  
Grounds Maintenance..... HTM Landscaping Company  
House Staff..... Ethan Bellante, Julia Bellante, Ryan Hudak,  
Ajay Persaud, Jonathan Smaldone,  
Kevin Spellman, Ed Wecera  
General Counsel..... Ann L. Nowak

Playbill Designed and Printed by  
Searles Graphics, Inc., Yaphank, NY  
www.searlesgraphics.com



is the official  
landscaper of

*Gateway Playhouse*

all work done by owner

Nicholas J. Harding

**631-475-0636**



Reach for HOPE  
Quannacut

Where Recovery Happens

**Eastern Long Island Hospital**

**477.8877** Inpatient **369.8966** Outpatient

# Swan Bakery

All Occasion Cakes

Guy Gagliano

The Official Bakery of Gateway Playhouse

15 South Country Rd., East Patchogue, NY 11772  
(631) 475-9626

# Avino's Italian Table

Lobster fest Every Monday Night!  
Starting at \$21.95

Pre- Theater Early Bird Special  
3 Course dinner seated by 5:30

Happy Hour served every day until 7!

108 South Country Road, Bellport Village  
Phone: 631-803-6416 Fax: 631-803-6418



**Don't Miss the Final Main Stage  
Production of the Season...**

# SWEENEY TODD

**AUGUST 24 - SEPTEMBER 11**

**IN BELLPORT**

Group Discounts Available. Please call the Box Office for more information.

**631-286-1133 • 1-888-4TIXNOW**  
**WWW.GATEWAYPLAYHOUSE.ORG**



**OUR FUTURE DEPENDS ON THE DREAMS OF OUR YOUTH –  
INSPIRE YOUR KIDS AND GIVE THEM A CULTURAL FOUNDATION...  
CHILDREN'S THEATRE YOU'LL BE GLAD YOU DID**



**NICKELODEON'S DORA THE EXPLORER – PIRATE ADVENTURE**  
Friday, August 5, 12 & 19 at 10:30am  
Saturday, August 6, 13 & 20 at 10:30am  
Presented at the Gateway Playhouse in Bellport

Come aboard with Dora, her best pal Boots, cousin Diego and all of their friends as they set sail for Treasure Island!

**TALES FROM THE FOREST**  
Goldilocks and the Three Bears  
Hansel and Gretel  
Friday, August 26th,  
10:30am and 1pm  
Yates Musical Theater  
in Bellport



All Seats: \$12.00 • 25 or more: \$10.00 • 100+: \$6.00  
(Certain restrictions apply)

RESERVED SEATING   

**631.286.1133 • 1.888.4TIXNOW**

Sorry, children aged 2 or older only. No infants please, as they disturb others from enjoying the performance. Every child must enter with a purchased ticket.

\*Shows subject to change without notice

*...extends its gratitude to the following local restaurants and shops for  
participating in the 'gift certificate/coupon book to subscribers' promotion:*

**Participating Restaurants:** Avino's Italian Table, The Bellport, Bobbique, BrickHouse Brewery and Restaurant, Café Gia, Chachama Grill, La Margherita Pizzeria & Restaurant, Main Street Café, The Oar Steak & Seafood Grill, Painters, Papa Nicks, Pine Grove Inn, Porters on the Lane, Sicilia D'Oro Family Restaurant and South Country Inn.

**Participating Businesses Include:** Bellport Arts and Framing Studio, Bellport Jewelers, Carla Marla's, Circa Something Antiques, Pamela Lerner and Kate Carmel Antiques and Summer Salt Beach House.

**Gateway Playhouse would like to thank our volunteer staff  
for their dedication and support. It is much appreciated.**

HEAD USHER- Marie Racheck

Missy Atchue, Carmela Aiosa, Olga Belz, Millie Diagostino, Betty Entress, Kristina Farmer, Joyce Gambina, Linda Good, Peter Haustein, Mary Hubner, Barbara Keup, Mary Lanier, Josephine Livote, Connie Merced, Sue Nemet, Peter Pernice, Bea Peters, Linda Randolph, Sandy Reifel, Allan Ritchie, Terry Seng, Jack Stein, Mary Wirth, Alexis Sheridan

**IF YOU WOULD LIKE TO JOIN OUR VOLUNTEER STAFF CALL 286-0555**

# ACTING SCHOOL DIVISION

**Real Acting...  
Real Training...**

at **THE Gateway**  
PERFORMING ARTS CENTER OF SUFFOLK COUNTY

A school built by  
Casting Director Robin Joy Allan,  
(PARENTHOOD, LORD OF THE FLIES)  
to afford Long Islanders  
industry guidance and connections.

**Emphasis on skill training: listening, focus, awareness of others, honest  
communication, spontaneous reaction and creative expression.**

**All levels of Acting, Musical Theater Performance,  
TV & Film Auditioning. Ages 6 and up!**  
Call the Box Office to enroll – 631-286-1133

Sunday, August 14th or Monday, August 15th  
**TALENT SEARCH!**  
Agent and Casting Director  
Audition and  
Career Workshop





# PORTERS

— on the lane —

RESTAURANT • BAR • CATERING



Check out our  
new Menu &  
Chalkboard Specials  
and expanded  
raw bar!

*Happy Hour Mon.-Fri. 4-7 p.m.*

*1/2 Price Beer, Wine & Appetizers*

*Live Music Wed. 7 p.m.-10 p.m. Fri. 9 p.m.-12 a.m.*

*Beer & a Burger \$10 – Sun.-Thurs. at the bar only*

Now accepting reservations online at:  
**[www.portersonthelane.com](http://www.portersonthelane.com)**

**19 Bellport Lane • Bellport Village NY 11713**

**phone: 631-803-6067 fax: 631-803-6069**