

*Gateway*  
PLAYHOUSE **PLAYBILL**



**JULY 14 - JULY 31**

**Long Island's Premier Professional Theater**

# W<sup>m</sup>. J. O'Neill

*Sales Exchange Co., Inc.  
Jewelers and Collateral Loanbrokers*

Classic and  
Contemporary



Platinum  
and Gold

Jewelry designs that will  
excite your senses.

Expert Jewelry Repairs

One East Main St., Patchogue 631.289.9899 [www.wmjoneills.com](http://www.wmjoneills.com)

Mention this ad for 10% discount on purchase



## At Work, At Play or After The Play

- Excellent** ▶ Located in Holbrook, Just Minutes From Gateway Playhouse.
- Exquisite** ▶ Enjoy lunch or dinner at Frederick & Co. Restaurant.
- Elegant** ▶ Schedule your next affair at Trio's refurbished catering facility.

700 Patchogue-Holbrook Road  
Holbrook, New York 11741

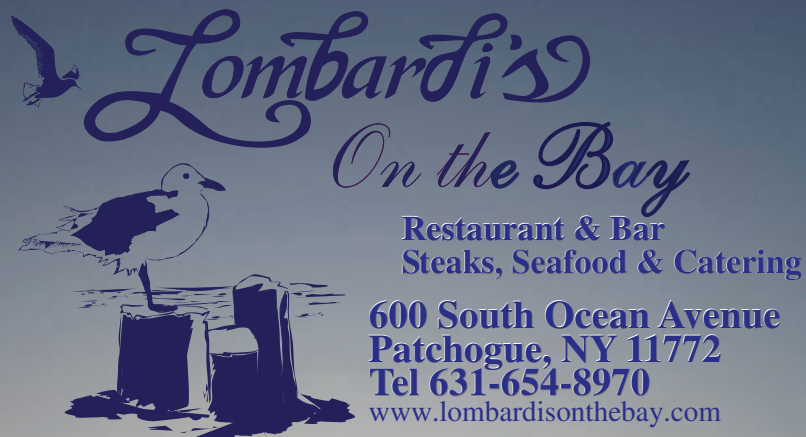
**(631) 585-4433**

[www.triofinefood.com](http://www.triofinefood.com)



*Catering ▼ Fine Dining ▼ Golf*





Experience the Lombardi Family Tradition of Fine Cuisine, Elegant Dining and Ultimate Catering that has extended for almost Four Decades. This is where...

*"Reputation is Everything"*

**Full Service  
WATERFRONT**  
Bar, Restaurant & Patio Dining  
Open 7 Days for Lunch & Dinner

**HAPPY HOUR**  
Monday to Thursday  
4:00 to 6:00 p.m.

**Friday**  
4:00 to 7:00 p.m.

Serving complimentary Hors d'oeuvres  
Call for Information on Live Music Entertainment

*Perfection is  
our Promise...*  
We cater to one  
wedding at a time.

**Brunch On  
The Bay**  
Every Sunday

Two Seatings: 11:00 a.m. and 1:00 p.m.

**\$27.95 per Person**  
Children 1/2 Price Ages 2-11  
Plus Service Charge\* and Tax  
\*Gratuity Included

# The Show Goes On... Before The Play & After The Matinee, Bellport Village Welcomes You



## THE BELLPORT

Steps away from the Gateway Playhouse



New York Times Review

159 South Country Road, Bellport, New York 11713  
(631) 286-7550

**MVP Automotive**  
Service Center  
HONEST PROFESSIONAL SERVICE



Foreign & Domestic  
24 Hour Towing

**10% OFF Service**  
with this Ad

152 South Country Rd. • Bellport Village, NY 11713  
Phone: (631) 776-1010

www.mvpautomotive.com



An Established  
Tradition of Service

FOR ALL YOUR  
REAL ESTATE NEEDS  
CALL YOUR LOCAL BROKER  
SERVING THE AREA FOR  
OVER 20 YEARS!

www.swanproperties.com  
322 South Country Rd.  
East Patchogue, NY 11772

- Residential
- Commercial
- Free Market Analysis
- Notary Public

**631-289-5550**  
**631-286-1222**

Deborah L. Galligan  
Broker/Owner

## South Shore Wines & Liquors



- Over 250 Different Wines
- Special Orders
- 10% Off Case Purchases

Present this ad  
for 10% off  
6 bottles of wine.

440A South Country Rd.  
East Patchogue

**(631) BUY-WINE**  
2 8 9 - 9 4 6 3

southshorewine@gmail.com

**Carla Morla's**  
ICE CREAM PARLOR  
& OLD FASHIONED CANDY SHOP

COUPON COUPON COUPON  
**Buy 1 Get 1 Half Price**  
COUPON COUPON COUPON

8 Bellport Lane, Bellport Village, NY 11713  
631-803-6108

Located across the street from Porters on the Lane  
email us at CarlaMarlas@hotmail.com

## Sign up today for your **FREE** Bellport Discount Card!

Save money by supporting your local businesses!  
To receive your card just fill out this form and mail to:  
Bellport Chamber of Commerce, PO Box 246 Bellport NY 11713  
Check our website [www.bellportchamber.com](http://www.bellportchamber.com) for the latest  
discounts and offers!

Name: \_\_\_\_\_

Address: \_\_\_\_\_

State: \_\_\_\_\_ Zip: \_\_\_\_\_

E-mail: \_\_\_\_\_



# Pine Grove Inn



## Prix Fixe

3 Fabulous Courses  
**\$24.95**

Includes Soup or Salad,  
5 Chef Special Entrees,  
Dessert & Coffee

Available Sun.-Thurs.  
Fri. Dinner until 6pm

Excluding holidays

German Classics, Prime Steak, Local Seafood & Sunday Brunch

## Waterfront Dining

*Live Reggae Music Every Thursday all summer long*

- **Outdoor Pavilion** - Open for the summer
- **Happy Hour** - Tuesday-Friday - Complimentary buffet on Friday
- **Live Music** - Friday & Saturday



**1 First Street • East Patchogue • 631-475-9843**  
Check our website: [www.pinegroveinn.com](http://www.pinegroveinn.com) for the current  
entertainment schedule. Closed Mondays

Present this voucher for

## \$5 OFF LUNCH

on checks of \$35 or more

Expires August 14, 2010. Reservations suggested. Not valid on  
prix fixe menu. With this voucher. Not valid with other offers.  
One voucher per couple. Not valid on holidays.

Present this voucher for

## \$10 OFF DINNER

on checks of \$80 or more

Expires August 14, 2010. Reservations suggested. Not valid on  
prix fixe menu. With this voucher. Not valid with other offers.  
One voucher per couple. Not valid on holidays.

ROLEX, BAUME & MERCIER,  
HEARTS ON FIRE, EBEL,  
CASATO, SWATCH, TISSOT  
FINE WATCHES & JEWELRY

JEWELRY, WATCH &  
AUTHORIZED ROLEX REPAIRS  
DONE ON PREMISES

APPRAISALS, CUSTOM DESIGN,  
WE PURCHASE GOLD

GIFT CARDS AVAILABLE,  
FINANCING AND ALL MAJOR  
CREDIT CARDS ACCEPTED

CONTACT US FOR MORE INFO AT:  
[ROSEJEWELERS@HAMPTONS.COM](mailto:ROSEJEWELERS@HAMPTONS.COM)

**ROSE**  
JEWELERS  
CELEBRATING LIFE'S EVENTS SINCE 1945

SOUTHAMPTON

57 MAIN STREET

(631) 283-5757

PATCHOGUE

74 E. MAIN STREET

(631) 475-1441

[WWW.ROSEJEWELERS.NET](http://WWW.ROSEJEWELERS.NET)



WE OFFER A FULL SELECTION OF

**PANDORA**™



# Gateway PLAYHOUSE

Presents

## Altar Boyz

Music and Lyrics By

**Gary Adler & Michael Patrick Walker**

Book By

**Kevin Del Aguila**

Vocal Arrangements By

**Gary Adler & Michael Patrick Walker**

Conceived By

**Marc Kessler & Ken Davenport**

Orchestrations By

**Doug Katsaros & Lynne Shankel**

Dance Music and Additional Arrangements By

**Lynne Shankel**

**Original production produced by Ken Davenport & Robyn Goodman**

**Original Off-Broadway production directed by Stafford Arima**

**Original Choreography by Christopher Gatelli**

Featuring:

**WADE ELKINS, SPIRO GALIATSATOS, JOEY KHOURY,  
JEFF LEATHERWOOD, RYAN NEARHOFF**

Producer

**PAUL ALLAN**

Associate Producer

**JEFF BELLANTE**

General Manager

**GALE EDWARDS**

Artistic Director

**ROBIN JOY ALLAN**

Production Manager

**BRIAN LOESCH**

Company Manager

**MICHAEL BAKER**

Set Designer

**DAVID KORINS**

Lighting Design

**DOUG HARRY**

Wardrobe Supervisor

**MARIANNE DOMINY**

Musical Direction by

**JUSTIN S. FISCHER**

Original Choreography Recreated by

**CARLOS L. ENCINIAS**

Directed by

**Carlos L. Encinias**

*Altar Boyz is presented through special arrangement with R & H Theatricals: [www.rnhtheatricals.com](http://www.rnhtheatricals.com)*



# CAST OF CHARACTERS

(in alphabetical order)

Abraham ..... WADE ELKINS  
 Juan ..... SPIRO GALIATSATOS  
 Matthew ..... JOEY KHOURY\*  
 Mark ..... JEFF LEATHERWOOD\*  
 Luke ..... RYAN NEARHOFF\*  
 Announcer/Voice of God ..... SCOTT MILLER

## MUSICIANS

Musical Director / Keyboard I ..... Justin S. Fischer  
 Keyboard II ..... Jeff Hoffman  
 Guitar ..... Ray Sabatello  
 Drums ..... Josh Endlich



The Musicians employed in this production are members of the American Federation of Musicians.



\*Actors employed in this production are members of Actors' Equity Association, the union of Professional Actors and Stage Managers in the United States.



The Director/Choreographer is a member of the Society of Stage Directors and Choreographers, Inc., an independent national labor union.

**WARNING** – The photographing or sound recording of any performance is strictly prohibited. Gateway Playhouse offers a wireless sound enhancement system for the hearing impaired. Inquire at the box office for more information.

**FIRE NOTICE** — The exit indicated by a red light and sign nearest to the seat you occupy, is the shortest route to the outside. In the event of fire or other emergency, please do NOT run. WALK to that Exit. However, under normal circumstances, when leaving the Theatre, use the center rear exits. SMOKING is prohibited in the BUILDING, as required by the Suffolk County NO SMOKING Ordinance. Smoking in any area designated "No Smoking" renders the offenders subject to a fine, or imprisonment, or both.



[www.theoar.com](http://www.theoar.com)

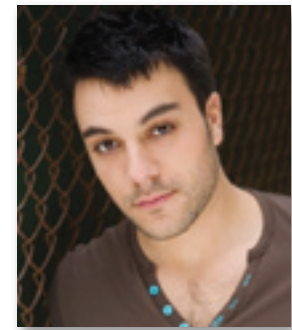
- Casual Waterfront Dining
- Happy Hour 4-7
- Check out our Daily Specials at [www.theoar.com](http://www.theoar.com)

Enjoy Live Music Wednesday thru Sunday Evenings  
 Open for Lunch & Dinner 7 Days a Week

Located on the Patchogue River - 264 West Avenue, Patchogue • 654-8266



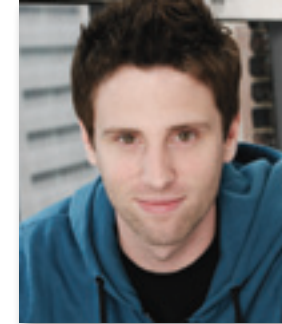
WADE ELKINS



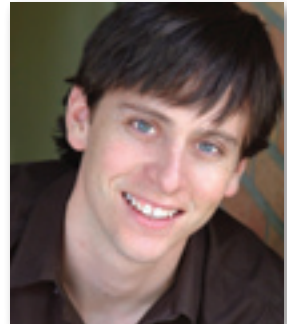
SPIRO GALIATSATOS



JOEY KHOURY



JEFF LEATHERWOOD



RYAN NEARHOFF

## Theatre Special - 10% OFF Dinner

### For The Good Times!

Enjoy the warm, welcoming atmosphere and fine food at the BrickHouse Brewery & Restaurant and **SAVE 10% OFF your entire dinner bill.**

Just present your tickets for before dinner dining, or your stub for after dinner dining, and receive 10% Savings.

10% savings valid 2 hours prior or after show date and time at the Gateway Playhouse or Patchogue Theatre. Cannot be combined with any other discount offer. Valid for lunch or dinner.



Open Daily 11 AM

67 W. Main St., Patchogue (631) 447-2337 • (631) 447-BEER  
[www.brickhousebrewery.com](http://www.brickhousebrewery.com)



# South Country Inn

*Fine Italian and Continental Cuisine*

*A short drive from both theatres on South Country Road.*

Special packages for parties & theatre groups.  
Open Tuesday - Sunday, Noon-10p.m.  
Reservations recommended

**Moderately Priced Entrees**  
**Prix Fixe Dinners**  
**Daily Lunch Specials - Tuesday-Sunday**

668 South Country Rd., East Patchogue  
**758-1919**

**www.SouthCountryInnRestaurant.com**

**Complimentary Glass of Wine**

with your lunch or dinner when you present show tickets or this ad. Not to be combined.

**OR**

**\$10 Off Any Dinner Check Over \$80**

When you present your show tickets or this ad. 1 coupon per couple. Not to be combined. Not valid on Holidays. Expires 10/17/10.

*Waterfront Dining • Exotic Cocktails • Tropical Paradise*

## Off Key Tikki!

### Restaurant • Beachbar • Resort

On The Beautiful Patchogue River  
"Always 30 and over at the bar"

**7 Days a Week!**  
**Lunch & Dinner** **475-1723**

*Rain or Shine... Heated Jumbrella Deck!*

**www.offkeytikki.com**  
32 Baker Place, Patchogue

## MUSICAL SYNOPSIS

Book I: In The Beginning...	
WE ARE THE ALTAR BOYZ .....	The Altar Boyz
Book II: What Up, Everybody?	
RHYTHM IN ME .....	The Altar Boyz
Book III: Soul Sensing	
SOUL SENSOR 1 .....	The Altar Boyz
CHURCH RULEZ .....	The Altar Boyz
Book IV: Check It	
SOUL SENSOR 2 .....	The Altar Boyz
THE CALLING .....	The Altar Boyz
Book V: Banded Together	
THE MIRACLE SONG .....	The Altar Boyz
Book VI: Look Within	
EVERYBODY FITS .....	Abraham
Book VII: Confession Sessions	
CONFESSION SESSIONS .....	The Altar Boyz
SOMETHING ABOUT YOU .....	Matthew
Book VIII: Contest Winner	
BODY, MIND & SOUL! .....	Luke
Book IX: Surprise Party	
SOUL SENSOR 4 .....	The Altar Boyz
LA VIDA ETERNAL .....	Juan
Book X: Life Goes On	
SOUL SENSOR 5 .....	The Altar Boyz
EPIPHANY .....	Mark
Book XI: God In The Machine	
NUMBER 918 .....	The Altar Boyz
Book XII: Exorcized	
I BELIEVE .....	The Altar Boyz
WE ARE THE ALTAR BOYZ (REMIX) .....	The Altar Boyz

## Don't Let Pain Interfere With Your Life!

Dr. Joseph Merckling can treat your problems giving you relief so you can live a more complete and full life.



**You and your body deserve it! Pain can become a thing of the past!**

**Providing Relief For:** Neck and Back Pain/Stiffness • Headaches • TMJ Pain  
Sciatica • Scoliosis • Shoulder and Knee Pain/Stiffness • Postural Problems

State of the Art Technology - Custom Digital Orthotic scanning available

Most Insurances accepted • Auto Accidents/No Fault • Worker's Comp



Massage Therapy  
and Acupuncture  
by Anthony  
Cerabino



**Merckling Family Chiropractic, P.C.**

Dr. Joseph R. Merckling, 16-2 Station Road, Bellport Village - 631-286-2300





**It's in the Details**

Expert Auto Collision Repairs  
All Insurance Accepted

1791 Montauk Highway  
Bellport, NY 11713

**286-2116**



Quality Service,  
Diagnostics  
and Repair

11 Station Road  
Bellport, NY 11713

**803-6935**

**WADE ELKINS** (Abraham) is thrilled to be poppin' it out on the Gateway stage! In NYC, he has been seen at New York Theatre Workshop and The Public Theater. Regionally, he has performed roles including Frankie (*Forever Plaid*), Motel (*Fiddler on the Roof*), Amos (*Battlecry*), and Michael (*Smokey Joe's Cafe*). Upcoming projects include Harry in the NYMF success *Gay Bride of Frankenstein* and the film *Jake and the Man Purse*. Much love and thanks to God, my wonderful family, beautiful friends, Diesel, and Joan Lader.

**SPIRO GALIATSATOS** (Juan) Spiro is thrilled to be in his first performance at Gateway Playhouse. New York: Cat in *Cat Gets a Card*. Regional: Tribe Hair, Ethan u/s & Ensemble *The Full Monty*, both with ReVision Theatre. Favorite roles: Jonathan in *tick, TICK...BOOM*, Angel in *Rent*, Simon in *Jesus Christ Superstar* feat. Constantine Maroulis, and Paul in *A Chorus Line*. Thank you to KK for all the love and support, and thanks to the wonderful cast and crew here at Gateway Playhouse who made this such a wonderful, and welcoming first experience. [www.spirogaliatsatos.com](http://www.spirogaliatsatos.com)

**JOEY KHOURY** (Matthew/Dance Captain) Gateway debut! Joey performed Off Broadway in *Altar Boyz* where he eventually played all five roles. National Tour: *Altar Boyz*. Favorite New York and Regional: *Hurricane* (Nicky), *Into the Woods* (Jack), *Fiddler on the Roof* (Motel), *Little Shop of Horrors* (Seymour), and *Pirates Of Penzance* (Frederick). Originally from Kaysville, Utah, studied music and theatre at Weber State University. Love to Mom and Dad.

**JEFF LEATHERWOOD** (Mark) Jeff cannot believe his good fortune. Not only does he get to 'raise the praise' again, he gets to do his 5<sup>th</sup> show with Mr. Nearhoff, and make his debut here at the wonderful and renowned Gateway Playhouse! Jeff was most recently seen in Los Angeles in the world premier of *Life Could Be A Dream*, the follow-up musical to Roger Bean's wildly successful *Marvelous Wonderettes*. Other credits include *The 25<sup>th</sup> Annual Putnam County Spelling Bee* (Leaf Coneybear), *A Year With Frog And Toad* (Snail), *Breaking Up Is Hard To Do* (Gabe), *Bat Boy: The Musical* (Edgar), *Altar Boyz* (Matthew), *South Pacific* (Lt. Cable), *Baby* (Danny), the Kidz Bop World Tour, and *The Diviners* (Dewey).

**LARGE STEAKS  
LOW PRICES  
BIG VALUE**

**MORE THAN  
15 MEALS  
FOR UNDER \$15**  
INCL: SOUP OR SALAD & 2 SIDES

**SENIOR CITIZENS DAY  
(ALL DAY TUESDAY)**  
INCLUDES SOUP OR SALAD,  
ENTREE, DESSERT,  
COFFEE OR TEA.  
**FROM \$12.99**

**#1 STEAKHOUSE  
IN SUFFOLK COUNTY**  
FOR BEST BEEF FOR THE BUCK BY NEWSDAY  
4/16/09 PART 2 - "DEALS THAT SIZZLE"

**OVER 25 LUNCHES  
JUST \$8.99**  
INCL: SOUP OR SALAD & 2 SIDES

**EARLY BIRD ITEMS  
MON.-FRI 3-7 PM  
STARTS AT \$12.99**

**BLACK BOARD  
SPECIALS DAILY**

**KIDS EAT FREE SUN-THURS**  
ONE WITH EACH FULL PAYING ADULT

**WWW.JANDRSSTEAKHOUSE.COM**

**CHOOSE #1 STEAKHOUSE  
IN SUFFOLK COUNTY**

CALVERTON	ROCKY POINT	PATCHOGUE	MEDFORD	STONY BROOK	ISLIP
727-7218	744-2101	475-9200	475-3839	689-5920	277-5677

631-475-1047  
14 South Ocean Ave.  
Patchogue

From Patchogue Theatre  
entrance, 1 block west  
and four stores south

**Quality Footwear for the Entire  
Family Since 1927**

- Friendly, Caring & Knowledgeable Service
- Areas Largest Selection of Sizes & Widths AA-EEEEEE

Rockport, Easy Spirit, Florsheim, New Balance, Stride Rite, Teva, Timberland, Skechers, Ros Hommerson, Hotter, Keds, Reebok, Dyeables, Topsider, Soft Spots, Clarks, Naturalizer, Hush Puppies, Daniel Green, Foamtreads, Toe Warmer Boots, Shape-Ups, Fittlop, etc.

**10% OFF** any purchase with ad only  
Excludes Easy Spirit, Dr. Martens, Shape-Ups, Fittlop & other offers. Expires 12/31/10

Don't let your  
banking relationship  
RUN ON EMPTY.

Serving eastern Long Island since 1890,  
the Suffolk County National Bank offers  
an exceptional banking relationship and  
the products and services you need.

Member FDIC      631.208.2200      [www.scnb.com](http://www.scnb.com)

Maples at The Kennedy Center). Special thanks to friends, family, and Sharon for endless support and general awesomeness.

**RYAN NEARHOFF** (*Luke*) Ryan is pleased to be joining the company of *Altar Boyz* in his first show at Gateway Playhouse. Ryan was last seen as Luke in the Sacramento Music Circus production of *Altar Boyz* last summer. Other credits include: *High School Musical* (Atlanta TOTS), *Breaking Up Is Hard To Do* (Cabrillo Music Theater), *Anything Goes* (Williamstown Theater Festival), and the national tour of *Almost Heaven: The Songs of John Denver*. Ryan is originally from Southern California where he received his BFA in Musical Theater from California State University Fullerton. "Thank you to my loving and supportive family, the great production team at Gateway, and to Lolly...the pinch of my passion."

**SCOTT MILLER** (Announcer/Voice of God) Scott is pleased to be making his return to the Gateway stage more than 2 decades after appearing here in "Rumors." After years as one of Long Island's most-listened-to radio personalities, at

stations such as WBLI and WALK, Scott is now a full time voice over artist, and can be found at [www.scottmillerproductions.com](http://www.scottmillerproductions.com).

**CARLOS L. ENCINIAS** (Director) is thrilled to be back at Gateway Playhouse after almost 10 years!! He is originally from Albuquerque, New Mexico and studied Theatre in Utah at BYU. He has been living in New York City since 2000. Directorial and choreographic credits include associate director/choreographer of the Adirondack Theatre Festival's production of *ALTAR BOYZ*, the DC premiere of *ALTAR BOYZ*, choreographer and associate director for *BIG RIVER* at Tuachan Center for the Arts, associate choreographer for *FLUTE PLAYER'S SONG* for the New York Musical Theatre Festival, choreographer for *CRAZY FOR YOU* at the Scera Theatre, and selected choreography for the New Mexico Ballet Company's production of the *Nutcracker*. As an actor, Carlos made his Broadway debut in *MAMMA MIA* and then left to act in and supervise the short lived Broadway production of *GOOD VIBRATIONS*, a musical based on the Beach Boys music. Carlos spent some time off-Broadway in the award winning, *ALTAR BOYZ*,

where he was dance captain and standby for the show, and was privileged to be in the final company of *LES MISERABLES* on Broadway. This past year he was seen in the world premiere of *VICES: A LOVE STORY* at the Caldwell Theatre. Carlos loves teaching theatre and dance, and is a resident teacher for the Broadway Dreams Foundation! PURA VIDA!

**JUSTIN S. FISCHER** (Musical Director) just completed playing the 2009-10 National Tour of *Hairspray*, after serving as the Assistant Music Director for the 2009 National Tour of *I Love a Piano*. He also served as the AMD for *Trip of Love*, a new dance musical, which had its international premiere in Osaka, Japan in April 2008, with plans for a New York transfer in 2010. As a composer/lyricist, his most recent work includes an adaptation of *Pinocchio* for the Random Farms Kids Theater (Elmsford, NY), and the original musical *The Princess of Riverside Drive* for the Vital Theatre Company (New York, NY). In addition, Justin has received musical theatre commissions from the Erie Playhouse (Erie, PA), and the Seagle Music Colony (Schroon Lake, NY), and choral commissions from organizations across the country.

**DOUG HARRY** (Lighting Designer) If you have reached the point where you are reading the Lighting Designer's Bio then may I suggest it is time to buy another drink, or maybe some M&Ms. However if you choose to read on. This is about Doug's 15th show for Gateway including, *Cats*, *Miss Saigon*, *Fosse*, *Titanic* & *DreamGirls*. He has also designed numerous shows and events in the UK & USA, most of which he can't remember.

**ROBIN JOY ALLAN** (*Artistic Director*) Not knowing what would sound interesting enough for a read, Robin would just like to give credit to the creative spirits and "way-showers" in her life who inspired her, taught her, supported her, lived a great example for her, and lit the journey as she sang, danced, played, taught, directed, cast and twirled herself through her varied life in the arts. Jane Jenkins, Denise Chamian, Michael Cutler, Jessica (O'S) Kelly, Bob Durkin, Chuck Carter, David and Joan Sheldon, Sally and Les Harris, Ruth and Stan Allan, Harry and Libby Pomeran and her brother, Paul Allan with whom she works daily to run the family business known as The Gateway. From her hands on theatrical experience on stage and off to her behind

## Bellport Country Club

Ala carte dining and price fixed dinners available Tuesday - Sunday

Reservations recommended

[www.bellportcc.com](http://www.bellportcc.com)  
286-4227

40 South Country Road, Bellport



is the official  
landscaper of

*Gateway Playhouse*

all work done by owner  
Nicholas J. Harding

**631-475-0636**



**Quannacut**

**EASTERN LONG ISLAND HOSPITAL**

Alcohol? Substance Abuse? Give us a call ...

**631.477.8877** Inpatient  
**631.369.8966** Outpatient

[www.ELIH.org](http://www.ELIH.org)

Member East End Health Alliance — Eastern Long Island Hospital  
Peconic Bay Medical Center Southampton Hospital

Applebee's  
Exciting Supports

**Gateway Playhouse**

Applebee's

**Carside To Go**

**DAVID COLE**  
Sunrise Highway  
(Route 27)  
& Waverly Ave  
**631-207-5900**

**You Call It In. We Bring It Out.™**  
Available at select locations.

**It's a whole new neighborhood.™**

## Now is the time for a fiscal check-up

No more excuses for not knowing how your finances and investments line up with your life goals and retirement expectations.

Call today for a free consultation, and we'll explore strategies for protecting yourself and helping you prosper today, tomorrow and into the future.



Together we'll go far

**Richard B. Miller**  
Assistant Branch Manager  
First Vice President - Investment Officer  
500 W. Main St., Ste. 105  
Babylon, NY 11702  
631-893-1322

Investment and Insurance Products: ► NOT FDIC Insured ► NO Bank Guarantee ► MAY Lose Value  
Wells Fargo Advisors, LLC, Member SIPC, is a registered broker-dealer and a separate non-bank affiliate of Wells Fargo & Company.  
©2009 Wells Fargo Advisors, LLC. All rights reserved. 0509-2151 (7/02/11) A1206

## The Official Winery of Gateway Playhouse Duck Walk Vineyards

231 Montauk Highway - Watermill, NY - 726-7555  
44535 Main Road - Southold, NY - 765-3500

**Buy 1 Tasting get the 2nd One FREE**

Expires 12/31/2010. Not redeemable for cash.



# CLARE ROSE PLAYHOUSE AT 25

**St. Joseph's College  
commemorates the**

**25TH ANNIVERSARY**

**of the**

# CLARE ROSE PLAYHOUSE

**1985 – 2010**

**Celebrating 25 years of  
community theater.**

**155 West Roe Boulevard, Patchogue, NY 11772  
631.654.0199 • www.sjcny.edu**

the scenes work in Film and TV as a Casting Director on both coasts, Robin has been fortunate to work with actors, directors, writers, and producers from today's celebrities to tomorrow's future stars. In her life bio she includes 16 years performing, 25 years casting and 30 years teaching, much of that overlapping, from her teens, on. The films "When Harry Met Sally," "Lord Of The Flies," "Parenthood," and "Ghost" are on her casting resume as well as one-hundred and thirty six Main Stage productions for Gateway. She feels blessed and hopes to continue to give back to the universe as much as she has been given. Robin lives in Brookhaven Hamlet with her amazing daughter Hayley and constant companions Lucy Dog, Mopsy and Momma Kitty.

**PAUL ALLAN** (*Producer*) Has been producing the seasons here at Gateway since the 1980's. It's hard to believe the number of shows, performers, staff, technicians, etc. he has come in contact with over the years, and the number of personal and professional friendships that developed and remain strong today. Paul's grandfather (Harry Pomeran) was the first producer of Gateway in 1950, followed by his uncle (David Sheldon), his parents (Ruth and Stan Allan), and

together with his sister Robin. Gateway has always been a family business, and each era has brought significant challenges particularly in the 80's and 90's when shows became more complicated and technically challenging. Additionally, the grounds changed, the buildings were modernized, and the facilities updated. In the most recent decade, the caliber of the artistic staff, performers, musicians, and technicians has risen to a level equaling and sometimes surpassing many Broadway shows. It has been difficult to find time to do other projects outside of Gateway seasons, but over the years Paul has been able to work in NYC on various shows in different capacities, run a touring company with shows traveling around the country and abroad, operate a sister theatre in Connecticut, act as consultant and facilitator for the restoration and reopening of the Patchogue Theatre, and maintain a set rental business - where Gateway scenery is used in theatres across the country after appearing on the Gateway stage. Paul appreciates, admires and honors his family's dedication to the arts and is proud to help continue the legacy. Paul lives in Bellport with his wife Annmarie and their 2 children - Luke 5 and Alexa 3. ♦

## PUBLIC HOUSE



**HAPPY HOUR MON.-FRI. • 1/2 OFF ALL DRINKS**  
Private Parties and Catering Available

**"3 Stars"**  
- *Newsday*

Open 7 Days a Week  
Lunch 12-5 • Dinner 5-11 • Late Night Menu

49 East Main St., Patchogue, NY 11772  
Phone 631-569-2767 • Fax 569-2768  
Email us at publichouse49.com

## ROE AGENCY INC.

*Insurance Since 1898*

*Personal & Commercial  
Life & Health*

- \* *Homeowners* \* *Automobile* \*
- \* *Flood* \* *Boat* \* *Umbrella* \*
- \* *Commercial Property* \*
- \* *Liability* \* *Business Auto* \*

*All Forms of Insurance*

♦ 125 East Main Street ♦  
♦ Patchogue, New York 11772 ♦  
Phone: 631.475.4000  
Fax: 631.475.7648

# Swezey

FUEL CO., INC. - EST. 1919

**Suffolk's Largest Family  
Owned Oil Company**

- Automatic Oil Delivery Service
- 24-Hour Emergency Service
- Budget Plans That Pay You Interest
- Expert Installation Of Boilers,  
Burners, Hot Water Heaters &  
Pool Heaters



## 475-0270

**51 RIDER AVE., PATCHOGUE**



## Lawntasia

LANDSCAPE SERVICES

*Design • Patios • Ponds*

Matt Palermo

PO Box 652 • Bellport, NY 11713  
631.286.0941 • [www.lawntasia.com](http://www.lawntasia.com)

### SHIRLEY SLEEP SHOPPE

*We're Not Just Beds Anymore!*

Furniture  
for the  
entire  
house



618 Montauk Highway • Shirley • 281-0376

# Avino's italian table



108 South Country Road, Bellport Village

Phone: 631-803-6416 Fax: 631-803-6418



★ ★  
**Summer  
Classes Enrolling  
Now.**

## ACTING AND MUSICAL THEATRE TRAINING

all levels of acting for all ages thru adult



## GATEWAY ACTING SCHOOL

LEARN FROM THE PROFESSIONALS!

## 286-9014

## WESTHAMPTON PINES

Westhampton Pines, the

brilliant gem of the Hamptons, is located just minutes from the pristine ocean beaches, fine dining, shopping and entertainment of the vibrant village of Westhampton Beach. This gated community provides a fully-amenitized lifestyle, including a state-of-the-art clubhouse, fitness center, indoor and outdoor pools, tennis and bocce.

For those 55 +! Taxes from \$3,000!



## LIVE YOUR VACATION ALL YEAR LONG!



Single level condominium residences with gourmet kitchens, wood flooring, large paver patios, basements and more.

Priced from \$570,000. Over 75% sold! Sales Center and fully decorated models are open 10 am to 6 pm daily. 631.653.7400

Visit [TRHomesLI.com](http://TRHomesLI.com) for our beautiful communities across Long Island.

## TIMBER RIDGE HOMES

YOUR BEST INVESTMENT FOR YOUR FUTURE AWAITS.

[TRHomesLI.com](http://TRHomesLI.com)



The complete offering terms are in an  
Offering Plan available from Sponsor.  
File Nos. CD04-0269/CD06-0250



# GATEWAY PLAYHOUSE STAFF

## ADMINISTRATIVE

Executive Producer.....Ruth Allan  
 Producer.....Paul Allan  
 Associate Producer.....Jeff Bellante  
 General Manager.....Gale Edwards  
 Company Manager.....Michael Baker  
 Assistant Company Manager.....Keith Llewellyn  
 Administrative Assistant.....Sarah Innes

## ARTISTIC

Artistic/Casting Director.....Robin Joy Allan  
 Director/Choreographer.....Carlos L. Encinias  
 Musical Director.....Justin S. Fischer  
 Set Design.....David Korins  
 Lighting Designer.....Doug Harry  
 Assistant to Lighting Designer.....Ivy Conyers  
 Associate Casting/Artistic Director.....Jessica Harrison  
 Production Photographer.....Jeff Bellante  
 Musical Contractor.....Jeff Hoffman  
 Sound Consultants.....Dominic Sac, Cody Spencer

## BOX OFFICE

Box Office Manager.....Laurie Parr  
 House Manager.....Joanne Famiglietti  
 Group Sales.....Claire Ward  
 Box Office Staff.....Ashley Cooke, Nadine Hazard,  
 Diane Koerber, Christina Montalato, Don Rebar,  
 Kyle Reitan, Linda Unger, Francesca Welhous

Playbill Designed and Printed by Searles Graphics, Inc.,  
 Yaphank, NY • www.searlesgraphics.com

## PRODUCTION

Production Manager.....Brian Loesch  
 Technical Director.....Jeff Taylor  
 Wardrobe Supervisor.....Marianne Dominy  
 Master Electricians.....Spencer Padilla, Jose Santiago  
 Scenic Artist.....Dennis Berfield  
 Props Master.....Scott Rygalski  
 Sound Engineer.....Don Hanna  
 Sound Technician.....Shane Bourgeois  
 Assistant Production Manager.....Taylor Milne  
 Assistant Stage Manager.....Megan Danielson  
 Assistant Technical Director.....Steve Haase  
 Technicians.....Charlie Bell, Jacob Forstein, AJ Lebenns,  
 Alex Olsen, Brendan Smith  
 Wardrobe Assistants.....Patrick Herb, Vanessa Pynn, Cee-Cee Swalling  
 Wigs.....Trent Pcenicni

## INTERNS

Company Management/Admin Intern.....Cassandra Levey  
 Stage Management Interns.....Avianna Meck, Lindsey Sigler  
 Electric Interns.....Jennifer Atkinson, Colin Chauche, Justin Keenan Miller  
 Sound Interns.....Sara Brown, Zach Ireson  
 Wardrobe Interns.....Rachel Filbeck, Ariel Marcus, Amber Mallon  
 General Technician Interns.....Nick Jacobs, Kendell McNichols,  
 Brian Freeman

## FACILITIES

Facilities Maintenance.....Mark Frederick  
 Cleaning Staff.....Eleodoro Sorto, Ray Tobia  
 Landscaping.....HTM Landscaping Company  
 House Staff.....Eric Burt, Ryan Hudack, Martin Maningo,  
 Michael Ray, John Smaldone, Ed Wecera  
 Hospitality Consultant.....Mike Taylor  
 General Counsel.....Ann L. Nowak & Associates

**"It's my job to make the stars on stage look terrific.  
 I can do the same for you."**

**from alterations to dressmaking**

**- Marianne Dominy -**  
 Costume Supervisor  
 Gateway Playhouse



**MARIANNE'S ALL SEWN UP 631-286-1074**

# Swan Bakery

All Occasion Cakes

Guy Gagliano

The Official Bakery of Gateway Playhouse

15 South Country Rd., East Patchogue, NY 11772  
 (631) 475-9626

## A Notice About Parking

We strongly encourage our patrons to always park on Gateway grounds. Parking is not allowed on Maplewood Drive north of the back Gateway exit. Parking is also prohibited on the east side of the street (Gateway side). Observe the No Parking signs.

The Village of Bellport has advised us that cars parked in these areas will be ticketed. Please park on the west side of the street, opposite the Gateway fence, between the back exit and South Country Road.

We appreciate your cooperation in making your visit to Gateway as pleasant as possible.

**Gateway Playhouse would like to thank our volunteer staff  
 for their dedication and support. It is much appreciated.**

HEAD USHER- Marie Rachek

Miss Atchue, Carmela Aiosa, Olga Belz, Betty Entress, Joyce Gambina,  
 Linda Good, Peter Haustein, Mary Lanier, Connie Merced, Sue Namet, Peter Pernice, Sandy Reifel,  
 Allan Ritchie, Terry Seng, Raymond Tobia, Alexis Sheridan, Mary Wirth

**IF YOU WOULD LIKE TO JOIN OUR VOLUNTEER STAFF CALL 286-0555**

*Gateway Playhouse extends its gratitude to the following local restaurants and shops  
 for participating in the 'gift certificate/coupon book to subscribers' promotion:*

**Participating Restaurants:** Avinos, The Bellport, Bobbique, The Brick House, Café Gia, Chachama Grill, La Margherita, Main Street  
 Café, Meritage, The Oar House, Painters, Papa Nicks, The Pine Grove Inn, Porters, Pura Vida, Sicillia D'Oro and South Country Inn.

**Participating Businesses Include:** Bellport Arts and Framing Studio, Bellport Jewelers, Bellport Paint, Carla Marla's, Circa  
 Something Antiques, Pamela Lerner and Kate Carmel Antiques and Summer Salt Beach House.

*Special Thanks to The Boy Scouts Council of Suffolk County, The Piano Clearance Center, and Family Melody in Patchogue.*



Norman Orsinger Woodworking Ltd.  
 631.289.0846 - Showroom  
 516.449.0986 - Cell

*The finest in custom furniture,  
 cabinets, and millwork.  
 For more information visit our  
 website or call us today!*

[www.NormanOrsingerWoodworking.com](http://www.NormanOrsingerWoodworking.com)



*"I pride myself in  
 providing the best  
 quality dental care  
 at affordable fees."*

**Complete Family & Cosmetic Dentistry**

**Shawn P. Shannon**  
 DMD

- Friendly, Gentle, One Dentist Practice
- Your dental needs and concerns are handled with the care you will appreciate.
- New Patients Welcome

285 Sills Road, Bldg. 15F  
 East Patchogue • Brookhaven Professional Park

**654-1040**

*For appointments or questions, ask for Ginger*

[www.shannondentistry.com](http://www.shannondentistry.com)

*Thanks to all our Patients  
 who have referred Family & Friends*

Call to see if we take your insurance  
 Sorry, Medicaid not accepted

OUR FUTURE DEPENDS ON THE DREAMS OF OUR YOUTH –  
INSPIRE YOUR KIDS AND GIVE THEM A CULTURAL FOUNDATION...

## CHILDREN'S THEATRE YOU'LL BE GLAD YOU DID



### BEAUTY AND THE BEAST

Friday, July 16 at 10:30 and 1:00  
Presented by the Yates Musical Theater on the Patchogue Stage

The Beast and Beauty laugh, cry, dance and sing in this whimsical classic!



### SNOW WHITE

Friday, August 20 at 10:30 and 1:00  
Presented by the Yates Musical Theater on the Patchogue Stage

The dwarves and friendly animals all see to it that Snow White finds her prince and lives happily ever after!



### PETER PAN AND WENDY

Friday, August 27 at 10:30 and 1:00  
Presented by the Yates Musical Theater in Bellport

The enchanting story of the boy who won't grow up and the children who love stories and adventures!

## NICKELODEON'S DORA THE EXPLORER PIRATE ADVENTURE

Friday July 23, 30,  
August 6 and 13 at 10:30  
Saturday July 24, 31,  
August 7 and 14 at 10:30  
Presented by the  
Gateway Playhouse  
on the Patchogue Stage

Come aboard with Dora,  
her best pal Boots, cousin  
Diego and all of their friends  
as they set sail for Treasure  
Island!



**All Seats: \$10.00**  
**25 or more : \$9.00 • 100+: \$5.00**  
(Certain restrictions apply)

### RESERVED SEATING

**631.286.1133 1.888.4TIXNOW**

Sorry, children aged 2 or older only. No infants please, as they disturb others from enjoying the performance. Every child must enter with a purchased ticket.

\*Shows subject to change without notice

## AUGUST 11 - AUGUST 21 IN BELLPORT

Announcing a first time event!

# Les Misérables<sup>®</sup>

School Edition

This will be a ground breaking event for us at Gateway! We will be featuring students who excel in the Performing Arts, in a world class musical with the same production values as you have come to expect from our Main Stage productions. With industry professionals directing, a beautiful set, costumes and lighting; our students will showcase their amazing talents in a crème de la crème setting, (we are practicing our French!) This will be no high school musical!



Wednesday, August 11	8:00pm
Thursday, August 12	2:00pm, 8:00pm
Friday, August 13	7:00pm
Saturday, August 14	4:00pm, 8:00pm
Sunday, August 15	2:00pm, 7:00pm

Tuesday, August 17	11:00am
Wednesday, August 18	8:00pm
Thursday, August 19	2:00pm, 8:00pm
Friday, August 20	7:00pm
Saturday, August 21	4:00pm, 8:00pm

**TICKETS**  
**\$25/\$20 Students**

Group Discounts Available. Please call the box office for more information.

**Our 2010 Lineup Continues...**

**AUGUST 4 - AUGUST 22**  
**AT THE PATCHOGUE THEATRE**

**AUGUST 25 - SEPTEMBER 19**  
**IN BELLPORT**

[www.gatewayplayhouse.com](http://www.gatewayplayhouse.com) (631) 286-1133 1-888-4TIXNOW

## A PUB OF THE OLD STYLE

*Pub Fare That Will Make Your Tongue Smile*

*Relax Before or After The Show — Full Bar & Menu*

Kitchen Open 11 AM to 11 PM (Mon. thru Sat.) — Bar 'til 1 AM

**70 North Ocean Avenue • Patchogue • (631) 289-1900 • [www.reeses1900pub.com](http://www.reeses1900pub.com)**



# PORTERS

— *on the lane* —

RESTAURANT • BAR • CATERING



Check out our  
new Menu &  
Chalkboard Specials  
and expanded  
raw bar!

*Happy Hour Mon.-Fri. 4-7 p.m.  
1/2 Price Beer, Wine & Appetizers  
Live Music Fri. & Sat. 9 p.m.-12 a.m.*

Now accepting reservations online at:  
**[www.portersonthelane.com](http://www.portersonthelane.com)**

19 Bellport Lane • Bellport Village NY 11713  
phone: 631-803-6067 fax: 631-803-6069