

2009 PLAYBILL

Gateway
PLAYHOUSE *60*
*Years of
Theater*

DUKE ELLINGTON'S
SOPHISTICATED LADIES

MAY 27 - JUNE 13



Gateway Theatre circa 1950

W^m. J. O'Neill

Sales Exchange Co., Inc.
Jewelers and Collateral Loanbrokers

Classic and
Contemporary



Platinum
and Gold

Jewelry designs that will
excite your senses.

Expert Jewelry Repairs

One East Main St., Patchogue 631.289.9899 www.wmjoneills.com

Mention this ad for 10% discount on purchase

Pine Grove Inn RESTAURANT

Established In 1910. Famous for almost 100 Years.

Visit the Pine Grove Inn and Experience its Old World Charm

Pine Grove Inn
overlooks the lovely Swan
River in Patchogue



- Open for Lunch and Dinner
Tuesday through Sunday
- Join us every Friday from 4-6pm for
Happy Hour & Complimentary Buffet
- Live Music Friday & Saturday Evenings

Now Serving Sunday Brunch 11am-2pm

New Prix Fixe Menu \$24.95 Lunch & Dinner

Soup or Salad • Entrée • Dessert • Coffee • Tea
Available Sunday through Thursday
Not available on holidays or for parties greater than fifteen.

- Extensive menu is filled with
something for everyone
- Fresh Local Seafood • Prime Steaks
- Traditional German Classics
- Catering for all occasions –
(3 separate rooms)



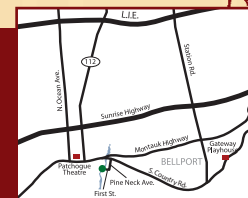
Tuesday &
Wednesday
Lobsterfest

Thursday
Prime Rib
Night



1 First Street, East Patchogue • 631-475-9843

Check our website: www.pinegroveinn.com
for the current entertainment schedule.
Closed Mondays



PRESENT THIS VOUCHER FOR
\$5 OFF LUNCH
on checks of \$35 or more

Expires June 20, 2009. Reservations suggested. Not valid on prix fixe menu.
With this voucher. Not valid with other offers. One voucher per couple. Not valid on holidays.

PRESENT THIS VOUCHER FOR
\$10 OFF DINNER
on checks of \$80 or more

Expires June 20, 2009. Reservations suggested. Not valid on prix fixe menu.
With this voucher. Not valid with other offers. One voucher per couple. Not valid on holidays.

TRIO

at the
Holbrook
Country
Club

At Work, At Play or After The Play

Excellent ▶ Located in Holbrook,
Just Minutes From
Gateway Playhouse.

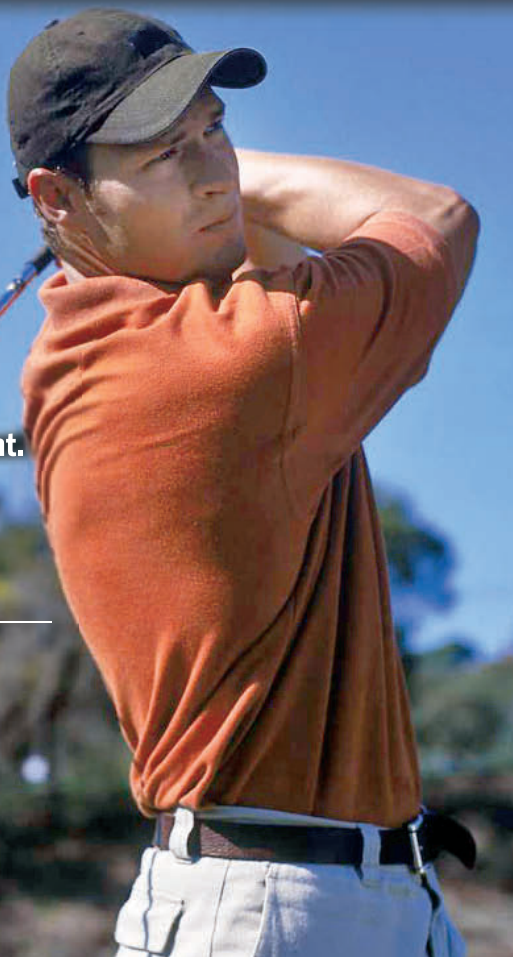
Exquisite ▶ Enjoy lunch or dinner at
Frederick & Co. Restaurant.

Elegant ▶ Schedule your next affair
at Trio's refurbished
catering facility.

700 Patchogue-Holbrook Road
Holbrook, New York 11741

(631) 585-4433

www.triofinefood.com



Catering ▼ Fine Dining ▼ Golf

**Celebrating
10 Years
in Bellport**

BELLPORT JEWELERS & GALLERIES

Master goldsmith, gemologist, numismatist & watch experts on staff
Visit us in Bellport Village before the show or schedule a house call!

*Pietro Romano of Bellport Jewelers & Galleries
has been named the exclusive designer of the
Leonard's of Great Neck wedding jewelry line!
Let Master craftsman Pietro Romano create for you!
He can use your old gold & stones.
Personal service is our number one priority.*

**Buying ALL Gold, Silver,
Platinum Jewelry
& Watches**

.925 Silver Flatware
10K, 14K, 18K, 22K, 24K
.925 Sterling
dental gold

WE EVALUATE & BUY IT ALL!

Diamonds

1/4 ct	up to \$225
1/2 ct	up to \$1,500
1 ct	up to \$6,000
2 ct	up to \$19,000
3 ct	up to \$40,000
5 ct	up to \$60,000

**We buy all styles and shapes.
Even broken stones.**

Pre-1965 US SILVER Coins
All proof sets and mint sets/ingots.
Paying 850% over Face Value!

Silver Nickels	1942-1945 .35 & up
Silver Dimes	1964 & before .85 & up
Silver Quarters	1964 & before \$2.12 & up
Silver Halves	1964 & before \$4.25 & up
Silver Clad Halves	1965-1970 \$1.35 & up
Silver Dollars	1878-1904 \$14.00 & up
Silver Dollars	1921-1935 \$12.00 & up

US Gold Coins Before 1933
Also Maple Leafs, Eagles, Pesos,
Pandas, Kruggerands

\$1 Gold	\$160 and up
\$2.5 Gold	\$185 and up
\$3 Gold	\$700 and up
\$5 Gold	\$300 and up
\$10 Gold	\$500 and up
\$20 Gold	\$900 and up
\$50 Gold	\$12,000 and up

Prices are for undamaged, XF and better coins
Certified PCGS and NGC coins wanted



MEMBER
JEWELERS OF
AMERICA



All prices quoted are subject to market fluctuation

5 BELLPORT LANE, BELLPORT, NY 11713
631-286-7700 • WWW.BELLPORTGALLERIES.COM

Pamela Lerner ANTIQUES

*Pam and Kate
invite you...*

In honor of your
patronage of the arts,
*to a complimentary
glass of wine**
at the legendary
*Bellport
Country Club.*
Experience unique
Bellport Village and visit
Pamela Lerner Antiques
to pick up your gift card.

*Complimentary glass of wine
with purchase of lunch or dinner.
Gift card must be presented.

145 South Country Road Bellport, New York 11713 PAMELALERNERANTIQUES.COM 631.776.2183



A PUB OF THE OLD STYLE

Pub Fare That Will Make Your Tongue Smile



Relax Before or After The Show — Full Bar & Menu

Kitchen Open 11 AM to 11 PM (Mon. thru Sat.) — Bar 'til 1 AM

70 North Ocean Avenue • Patchogue • (631) 289-1900 • www.reeses1900pub.com

Welcome to our 60th Season Celebration!

In our PLAYBILLS this summer, we are planning a pictorial.....
a nostalgic look back at the six decades in our theater's history.

60
*Years of
Theater*

Here's what we looked like in

the 1950's...

TAMING OF THE SHREW 1950

First Show In The Barn
Sally Pomeran
and "suits."



LAUGHTER IN THE STARS 1952

David Sheldon Pomeran,
Ruth Pomeran Allan and
Robert Duvall



BUS STOP, 1956

Ruth Pomeran Allan,
Robert Duvall,
and ensemble

TIME OUT FOR GINGER 1955

Jim Martin, Ruth Pomeran Allan
and Robert Duvall



Looking back to how we began. An article reprinted from *THE CHRISTIAN SCIENCE MONITOR*, written in 1951, describes the forward thinking and initial inspiration of Sally Pomeran Harris, who, along with her two siblings, founded the Gateway Playhouse. Sally, David and Ruth Pomeran Allan's vision and commitment to theater that would "not only entertain, but as a medium for world understanding" has propelled the Gateway Playhouse all these years. Like their talented family predecessors, PAUL ALLAN, Ruth's Son and his sister Robin, along with an incredible staff of devoted and hard working individuals still manage to pick up the posters, meet the deadlines, stay up into the wee hours to ensure that the legacy continues. Read on...

Summer Theater on a Shoestring

By Sally Pomeran

It is a summer evening. The dog lies panting at the large barn door. Within minutes the activity will begin. Moving figures will cast dancing shadows on the walls as they swing into the cowstalls carrying bits of colored fabric. Lights will be switched on, and the barn swallows will flutter about their nests. The hum of motors will fanfare the arrival of the cars; bright headlights will illumine the large red building.

People will casually amble toward the spark in the vast redness. They will congregate and chat under the old straw hat. They will sit in a circle under the rafters. The music will start as the lights dim. A hush falls, and the actors enter. The audience will laugh and weep and exclaim en masse, but few will be conscious of the excitement which heralded the creation of the phenomenon only 10 short days before.

The idea was born when a small group of us, deploring the commercial stage, realized the need to spread good theater to small towns. There seemed present the need to decentralize the theater, and in so doing provide the starved movie-fed audience with a quality of production above the average run-of-the-mill stock play.

Previously, I had considered using our own barn at Long Island for such a venture; I had even planned out an entire project, complete with blueprints. A stage would have to be built, lights and plumbing



installed, insurance obtained, and scads of other details which would run into capital we could not possibly obtain. However, we felt our idea was a sound one, the project a needed one.

We had three willing people and an empty barn with which to start-why not try? With this incentive, we proceeded.

We drove from Illinois to Bellport, N.Y., our destination. From New York City came the fourth to join our group; we wired Kalamazoo for the fifth. Thus, with a prospective company of five, we launched

out. The first two days we scouted around town getting local merchants interested in advertising in our program. We sent out hundreds of letters to organizations who might be interested in sponsoring benefit performances.

We chose a play to open with-the Shakespearean comedy, "The Taming of the Shrew," which we decided to produce in-the-round-arena style, thereby eliminating the cost of stage, sets, and curtains. Arena style would also provide for the informal actor-audience contact that we wished to establish.

We would rehearse the play in the mornings, wait on tables and do outdoor work at noon to pay room and board, rehearse some more, and then jaunt off to town to have posters printed, props collected, fliers and handbills made, and answer mail. In the evenings we would rehearse again.

The cast of almost 25 had been cut to 14, but even doubling in parts, we only had half the required number of people in the cast. Thus one day when we were attending to the details of purchasing burlap and painting props, the director decided he could not possibly go on in this manner with rehearsals in such shape. Opening date was only a few days off. It looked like no theater for a while.

The posters had been printed, however, announcements distributed and we couldn't disappoint the public at this stage. That night we found four volunteers helpers. The next day another local community actor volunteered and still another who could commute from the city and rehearse with us in the evenings. The next day our Kalamazoo partner arrived and we were set.

Since we had no scenery, a necessary and important item for color was the costuming. We could not possibly, even with all our enthusiasm, sew 14 costumes in four days. A Broadway costume house gave us a special rate of \$110 for the complete rental... which we promised to pay as soon as we had our first audience.

Thus we arrived at our last day: grand opening. The hay was removed from the rafters, the walls were decobwebbed and sprayed: mirrors and make-up were installed in the modified cowstalls, and a box-office sign was placed over the tool shed. Straw hats were placed over the light bulbs and glossy photos of the actors were placed on a bulletin board in the makeshift lobby.

The actors were climbing into their costumes when we suddenly realized that no one had picked up the programs and the printer's shop had closed at 5 o'clock. A coat was thrown around a costumed actor. As he drove frantically to the printer's home, we quickly patched and stitched the leading actor's tights, which had split in dress rehearsal.

Our mascot puppy, now weary after 10 days of running in and out of rehearsals and yapping at each activity, yawned and fell asleep at the barn door. As the volunteer usherettes folded the last of the programs, the cars began to arrive. The Gateway Theater was an actuality.

Much to our gratitude we received a grand response and carried on the rest of the summer with "The Importance of Being Earnest," "Marriage Proposal," "Physician in Spite of Himself," and "The Skin of Our Teeth." Toward the end of the summer, we were turning away cars. Needless to say, we covered all expenses.

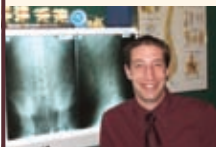
We found that working for a good production demanded that many people work together cooperatively to achieve a common purpose. When so many differences were dividing the world, we found unity in oneness. We realized moreover that theater possesses the influence and power to link larger groups of the world's peoples.

This summer we shall open the barn doors for our second season using the theater not only to entertain, but as a medium for world understanding. We welcome with open arms those who feel as we do to join us. ■

The Show Goes On... Before The Play & After The Matinee, Bellport Village Welcomes You

Don't Let Pain Interfere With Your Life!

Dr. Joseph Merckling can treat your problems giving you relief so you can live a more complete and full life.



You and your body deserve it! Pain can become a thing of the past!
Massage Therapy and Acupuncture by Anthony Cerabino.

Providing Relief For: Neck and Back Pain/Stiffness • Migraines • Sciatica
Shoulder and Knee Pain/Stiffness • Low Level Laser Therapy Offered
Headaches • Foot Pain/Plantar Fascitis

Most Insurances accepted • Auto Accidents/No Fault • Worker's Comp



Merckling Family Chiropractic, P.C.

Dr. Joseph R. Merckling, 16-2 Station Road, Bellport - 631-286-2300 Fax 286-4615



THE BELLPORT

Steps away from the Gateway Playhouse

★★★★

New York Times Review

159 South Country Road, Bellport, New York 11713
(631) 286-7550

Carla Marla's
ICE CREAM PARLOR
& OLD FASHIONED CANDY SHOP

COUPON COUPON COUPON

Buy 1 Get 1 Half Price

COUPON COUPON COUPON

8 Bellport Lane, Bellport Village, NY 11713
631-286-0044

Located across the street from Porters on the Lane
email us at CarlaMarlas@hotmail.com

Creative Framing

Bellport Arts
& FRAMING STUDIO
Inc.

147 South Country Rd.,
Bellport
803-6076

Preserves Memories

Bellport Festival July 25th

THE BELLPORT GAZEBO
Arts & Concerts Series

Presented by the Bellport Chamber of Commerce
& the Village of Bellport

Sign up today for your **FREE**
Bellport Discount Card!
For Event Schedule & Discount Card
go to: www.bellportchamber.com



Presents

Duke Ellington's Sophisticated Ladies

Based on the Music of Duke Ellington

Concept by **Donald McKayle**

Musical and Dance Arrangements by
Lloyd Mayers

Vocal Arrangements
Malcom Dodds
Lloyd Mayers

Originally Produced on Broadway by Roger S. Berlind, Manheim Fox,
Sondra Gilman, Burton Litwin and Louise Westergaard

In Association with Belwin Mills Publishing Corp. and Norzar Productions, Inc.

Original Musical Direction by **MERCER ELLINGTON**

Starring

JENNIFER BYRNE EUGENE FLEMING FRANCESCA HARPER
CARLY HUGHES JON PETERSON

Producer
PAUL ALLAN

Associate Producer
JEFF BELLANTE

General Manager
GALE EDWARDS

Artistic Director
ROBIN JOY ALLAN

Production Manager
BRIAN LOESCH

Company Manager
MICHAEL BAKER

Costume Design
B.G. FITZGERALD

Lighting Design
BRIAN LOESCH

Scenic Design
BRITTANY LOESCH

Wardrobe Supervisor
MARIANNE DOMINY

Production Stage Manager
DOM RUGGIERO

Musical Direction
JEFF HOFFMAN BRENDAN WHITING

Directed and Choreographed by
CHET WALKER

Sophisticated Ladies is presented through special arrangement with R & H Theatricals: www.rnhtheatricals.com.
Playbill Designed and Printed by Searles Graphics, Inc.

CAST OF CHARACTERS

PRINCIPALS

Eugene EUGENE FLEMING*
 Francesca FRANCESCA HARPER*
 Carly CARLY HUGHES*
 Jennifer JENNIFER BYRNE*
 Jon JON PETERSON*

ENSEMBLE

ELLIOTT BRADLEY*, JULIUS CHASE*, ZAK EDWARDS*, BRITTNEY GRIFFIN, TIMOTHY KASPER*,
 VASTHY MOMPOINT*, ANNE OTTO, LIZ PATEK*, DEVERE ROGERS*

UNDERSTUDIES

Eugene Fleming JON PETERSON*
 Francesca Harper VASTHY MOMPOINT*
 Carly Hughes VASTHY MOMPOINT*
 Jennifer Byrne BRITTNEY GRIFFIN
 Jon Peterson ZAK EDWARDS*

MUSICIANS

Conductor/Piano BRENDAN WHITING
 Trumpet I CHARLIE SARLING
 Trumpet II TOM MANUEL
 Trumpet III MICHAEL GIRESI
 Reed I MIKE KENDROT
 Reed II BOB DALPIAZ
 Bass CATHERINE O'MALLEY
 Percussion DAVID VINCOLA
 Trombone GARY JONES



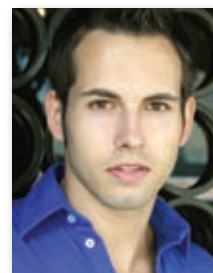
The Musicians employed in this production are members of the American Federation of Musicians.



*Actors employed in this production are members of Actors' Equity Association, the union of Professional Actors and Stage Managers in the United States.

ssdc

The Director/Choreographer is a member of the Society of Stage Directors and Choreographers, Inc., an independent national labor union.



ELLIOTT BRADLEY



JENNIFER BYRNE



JULIUS CHASE



ZAK EDWARDS



EUGENE FLEMING



BRITTNEY GRIFFIN



FRANCESCA HARPER



CARLY HUGHES



TIMOTHY KASPER



VASTHY MOMPOINT



ANNE OTTO



LIZ PATEK



JON PETERSON



DEVERE ROGERS

We've been expecting you.

Ready to be recognized as a Premier client around the world?
 Local and global recognition. Dedicated Relationship Manager. Seamless global banking.
 Start a Premier relationship today.

us.hsbc.com 1-800-975-HSBC

PREMIER

Deposit products in the United States offered by HSBC Bank USA, N.A. or HSBC National Bank USA. Both are Member FDIC. ©2007 HSBC Bank USA, N.A.

Patchogue Office
 325 E. Main St.
 Patchogue, NY 11772
 631-475-2600

Bellport Office
 20 Station Road
 Bellport, NY 11713
 631-286-3800

Mastic Office
 1718 Montauk Hwy.
 Mastic, NY 11950
 631-281-6400

ROLEX, BAUME & MERCIER,
HEARTS ON FIRE, EBEL,
CASATO, SWATCH, TISSOT
FINE WATCHES & JEWELRY

JEWELRY, WATCH &
AUTHORIZED ROLEX REPAIRS
DONE ON PREMISES

APPRAISALS, CUSTOM DESIGN,
WE PURCHASE GOLD

GIFT CARDS AVAILABLE,
FINANCING AND ALL MAJOR
CREDIT CARDS ACCEPTED

CONTACT US FOR MORE INFO AT:
ROSEJEWELERS@HAMPTONS.COM

ROSE
JEWELERS
CELEBRATING LIFE'S EVENTS SINCE 1945

SOUTHAMPTON
57 MAIN STREET
(631) 283-5757
PATCHOGUE
74 E. MAIN STREET
(631) 475-1441
WWW.ROSEJEWELERS.NET



WE OFFER A FULL SELECTION OF

PANDORA™



MUSICAL NUMBERS

ACT I

Overture.....	Orchestra
"I've Got To Be A Rug Cutter".....	Devere, Elliott, Julius, Tim, Zak
"Music Is A Woman".....	Eugene, Francesca
"The Mooch".....	Ensemble
"Hit Me With A Hot Note".....	Jennifer
"Love You Madly/Perdido".....	Francesca, Jon, Elliott
"Everything But You".....	Jon
"Don't Mean A Thing If You Ain't Got That Swing".....	Carly, Elliott, Zak, Anne Devere, Julius, Liz, Tim
"A Train Segment".....	Orchestra
"Bli-Blip".....	Jennifer, Jon
"Cotton Tail".....	Ensemble
"Take the 'A' Train".....	Carly, Eugene
"Solitude".....	Francesca, Vasthy
"Don't Get Around Much Anymore/I Let A Song Go Out Of My Heart".....	Eugene, Francesca
"Caravan/Dance (Plane)".....	Ensemble
"Something To Live For".....	Eugene
"Drop Me Off In Harlem (Ink Spots)".....	Eugene, Devere, Elliott, Julius, Zak
"Rockin' In Rhythm (Dance)".....	Ensemble

— INTERMISSION —

ACT II

Entr'acte.....	Orchestra
"In A Sentimental Mood".....	Carly
"I'm Beginning To See the Light".....	Eugene, Francesca
"A Satin Doll/Just Squeeze".....	Jennifer, Jon
"Dancers In Love (Dance)".....	Elliott, Liz, Zak
"Echoes of Harlem (Dance)".....	Anne, Brittney, Devere, Julius, Tim, Vasthy
"I'm Just A Lucky So and So".....	Eugene, Elliott, Julius, Tim, Zak
"Imagine My Frustration".....	Jennifer, Anne, Brittney, Devere, Elliott, Julius, Liz, Tim
"Kinda Dukish (Tap Dance)"*.....	Eugene
"Ko-Ko".....	Orchestra
"I'm Checkin Out/Do Nothin'...".....	Carly, Eugene
"I Got It Bad.../Mood Indigo".....	Carly, Jennifer
"Sophisticated Lady".....	Eugene, Francesca, Anne, Brittney, Devere, Elliott, Francesca, Julius, Liz, Vasthy, Tim, Zak
"It Don't Mean A Thing (Finale)".....	Full Company

*Choreographed by Eugene Fleming

WARNING – The photographing or sound recording of any performance is strictly prohibited. Gateway Playhouse offers a wireless sound enhancement system for the hearing impaired. Inquire at the box office for more information.

FIRE NOTICE — The exit indicated by a red light and sign nearest to the seat you occupy, is the shortest route to the outside. In the event of fire or other emergency, please do NOT run. WALK to that Exit. However, under normal circumstances, when leaving the Theatre, use the center rear exits. SMOKING is prohibited in the BUILDING, as required by the Suffolk County NO SMOKING Ordinance. Smoking in any area designated "No Smoking" renders the offenders subject to a fine, or imprisonment, or both.

**South
Country
Inn**

Fine Italian and Continental Cuisine

*A short drive from both theatres
on South Country Road.*

Special packages for parties &
theatre groups.

Open Tuesday - Sunday, Noon-10p.m.
Reservations recommended



Moderately Priced Entrees

Prix Fixe Dinners - 3-6 PM Tues-Sun – \$22.95

Daily Lunch Specials - Tuesday-Sunday

668 South Country Rd., East Patchogue

758-1919

www.SouthCountryInnRestaurant.com



**Complimentary
Glass of Wine**

with your lunch or dinner when you present
show tickets or this ad. Not to be combined.

OR

**\$10 Off Any
Dinner Check Over \$80**

When you present your show tickets or this ad. 1 coupon per couple.
Not to be combined. Not valid on Holidays. Expires 10/17/09.

DebraCanavan
CLASSICS

- Michael Stars
- Milly
- Free People
- Shoshanna
- Susana Monaco
- Roxy
- Havaianas



Casual, Career & Cocktail

53 Main Street, Sayville – 631.563.9385



**MONTI'S
AUTO WORKS**

It's in the Details

Expert Auto Collision Repairs
All Insurance Accepted

1791 Montauk Highway
Bellport, NY 11713

286-2116

Theatre Special - 10% OFF Dinner

For The Good Times!

Enjoy the warm, welcoming atmosphere and fine food at the BrickHouse Brewery & Restaurant and **SAVE 10% OFF your entire dinner bill.**

Just present your tickets for before dinner dining, or your stub for after dinner dining, and receive 10% Savings.

10% savings valid 2 hours prior or after show date and time at the Gateway Playhouse or Patchogue Theatre. Cannot be combined with any other discount offer. Valid for lunch or dinner.



Open Daily 11 AM

67 W. Main St., Patchogue (631) 447-2337 • (631) 447-BEER

www.brickhousebrewery.com



ELLIOTT BRADLEY (*Ensemble*) This is Elliott's first production at Gateway Playhouse. Most recently he was in *The Radio City Christmas Spectacular* in NYC. Elliott has performed internationally in *West Side Story*, *We Will Rock You*, and on Holland America's *Oosterdam*. Regional U.S. credits include *Kiss Me Kate* (Paper Mill Playhouse), *Music Man* (Kansas City Starlight), *Crazy For You* (Ogunquit Playhouse). Proud member of AEA.

JENNIFER BYRNE (*Jennifer*) is thrilled to be returning to the Gateway after performing the role of Louise in *Gypsy* back in 2004. Recent credits include: *Evil Dead the Musical* (Linda, Original Cast recording; Toronto, Choreographer), *It's Karate, Kid! the Musical* (NYIT Outstanding Lead Actress Nomination), *The Rocky Horror Show* (Columbia), *The WaterCoolers* (Judy), *Smokey Joe's Café* (Patti), *Seven Brides for Seven Brothers* (Milly), *Singin' in the Rain* (Zelda), *Godspell* (UK, Sonia), *Pirates of Penzance* (Ruth) and *Side By Side By Sondheim* (Sally). This fall she will be recreating her role as Patti in the Depot Theatre's production of *Smokey Joe's Café*. She has her BA in theatre from PSU and a musical theatre degree from RAPA in Toronto. Thanks to family and friends and to Chet – third time's a charm!

JULIUS CHASE (*Ensemble*) is extremely enthusiastic to be joining the Gateway family! A native of New Orleans, Louisiana; Julius has appeared as Speedy Valenti in *Wonderful Town*, danced in Andrew Palermo's *Two Gentlemen of Verona* (musical) (founder of dre.dance) and featured dancer in Disney POPS with Ashley Brown from Broadway's *Mary Poppins*. Regional: Curtis (*Dreamgirls*), Zeke (*HSM*), Skeets Miller (*Floyd Collins*) and *All Shook Up* (The New Theatre). Sincere thanks to Friends, Family, Brother "Without your support I wouldn't be who and where I am today." Julius will be a Senior at CCM, graduating with a BFA in Musical Theatre in Spring 2010. Peace & Much Love!!

ZAK EDWARDS (*Ensemble u/s Jon Peterson*) is a proud OU graduate and Equity member. His favorite credits include *No, No, Nanette*

(with Rosie O'Donnell and Beth Leavel), *Wizard of Oz* (Tin Man), *Joseph...Dreamcoat* (Benjamin), *Hello, Dolly!* (Ambrose Kemper, with Sally Struthers), *The Wild Party* (Oscar), *Jesus Christ Superstar* (Simon/Jesus U.S.), and three productions of *Thoroughly Modern Millie*, at theatres including New York's City Center, Casa Manana, Lyric of Oklahoma, Music Theatre of Wichita, Stages St. Louis, the Arvada Center, and North Shore. Thanks as always to his incredible family, fantastic friends, and Jon.

EUGENE FLEMING (*Eugene*) Broadway credits include: *Never Gonna Dance*, *Look of Love*, *One Mo' Time*, *Kiss Me Kate*, *Fosse*, *Street Corner Symphony*, *Swingin' on a Star*, *High Roller Social and Pleasure Club*, *Black and Blue*, *The Tap Dance Kid*, *Sophisticated Ladies* and *A Chorus Line*. His National Tours include: *Smokey Joe's Café*, *The Wiz* and *Song and Dance*. Film credits include Stephen Spielberg's *Catch Me If You Can*. Eugene dedicates his performance to Samaria.

BRITTNEY GRIFFIN (*Ensemble u/s Jennifer Byrne*) is a New York native and received her BFA in Dance from the University at Buffalo. Credits: Asian Tour of *42nd Street* (Anytime Annie), National Tour: *Hairspray* (Dynamite), Regional: *Smokey Joe's Café* (Brenda). She would like to thank her Mom, Dad, family, and Jaesyn for their love & support.

FRANCESCA HARPER (*Francesca*) was raised in New York City, where she studied at the School of American Ballet, the Joffrey Ballet School, The Ailey School, and under Madame Darvash and Barbara Walczak. After performing with the Dance Theater of Harlem, she danced as a principal in William Forsythe's Ballet Frankfurt from 1994-1999. Since returning to the USA in 2000, Harper has performed in several Broadway productions including *Fosse*, *The Producers*, *The Frogs* and *The Color Purple*. She most recently played Helene, opposite Molly Ringwald in a national tour of *Sweet Charity*. She premiered her critically-acclaimed one-woman show *The Fragile Stone Theory* at the 2002 Jacob's Pillow Dance Festival. As a singer and lyricist Harper

Who's Who

has released singles in Europe and Japan. In November 2003, her single *Would I?* was released on Powerhouse Records. In 2006, she released her debut solo album *Modo Fusion* with 10 original tracks of soul-inspired R&B and electronica. Francesca thanks Chet for this amazing opportunity and thanks her Mother, Eric, Mama, and Margo for their love, support, and inspiration. Please visit www.francescaharper.com for more information.

CARLY HUGHES (*Carly*) Is happy to be joining the Gateway family! Credits include Broadway: *How the Grinch Stole Christmas* (Trixie Who, u/s Mama Who), *Putnam County Spelling Bee* (u/s for Marcy Park, Rona Luisa Peretti). Off-Broadway: *SIDD: The Musical*. Fav' Regional: *Dessa Rose* (Dessa Rose, West Coast Premiere, Theatre Works Palo Alto), *Footloose* (Rusty), *AIDA* (Aida), *Constant Star* (Ida One), *Ragtime* (Sarah), *Smokey Joe's Cafe* (Brenda), *Mrs. Miller Does Her Thing* (Denise, James

Lapine workshop), *Dreamgirls* (Michelle). She has a BFA in Musical Theater and received the Princess Grace Award for Acting & Excellence in the Arts, 2003-2004, (www.pgfsusa.com).

TIMOTHY KASPER (*Ensemble/Dance Captain*) is excited to join the Gateway family in celebrating its anniversary with this refreshing production of *Sophisticated Ladies*. Timothy is a teacher, director/choreographer, and performer. He has traveled the world collaborating on Baroque and classical operas, concert dance works, master class/dance intensives, and of course Musical Theater Productions. He has choreographed productions of *A Chorus Line*, *West Side Story*, *Brigadoon*, *World Goes Round*, *Phantom of the Opera*, and more. He is most grateful to have met Chet Walker 18 years ago, who remains a constant source of inspiration and Friend.


VASTHY MOMPOINT (*Ensemble u/s Francesca Harper and Carly Hughes*) is excited to be returning to the Gateway Playhouse after performing *Ragtime*, *Annie Get Your Gun*, and *Jesus Christ Superstar* in the 2002 season! Broadway credits include: *Good Vibrations*, *Hot Feet*, and most recently, *Mary Poppins!*. Select Regional/National tours: *Aida* (Aida), *Hair* (Dionne), *Smokey Joe's Cafe* (Brenda), *Sweet Charity* (Helene), *42nd Street* (Gladys) National Tour of *Ragtime* (dance captain, Pas de deux dancer). She has performed with Micheal Jackson, Destinys Child, Gloria Gayner among others! She is currently the voice of Layla on Fox Tv's the "Winx Club". Thanks to God, Family, Friends, Teachers, and Michael!

ANNE OTTO (*Ensemble*) is very excited to be joining the cast and crew of *Sophisticated Ladies* at the Gateway Playhouse. Her past credits include *Sweet Charity*, Donn Arden's *Jubilee and Singin' in the Rain* as the "Green Dress". Anne was also in the "Victoria's Secret Fashion Show" this past fall and is a member of Chet Walker's "Walkerdance". She would love to thank the love of her life for his love and support no matter the distance.

LIZ PATEK (*Ensemble*) - Proud member of Actors Equity. Liz is thrilled to join the cast of *Sophisticated Ladies* at Gateway. Other credits include: *A Celebration of Women in the Arts*, w/ Chita Rivera (Kennedy Center) *Candide* (NYC Opera), *Sugar Babies* (Downtown Cabaret), *Cabaret* (Arkansas Rep and La Comedia), *A Chorus Line*. Former Radio City Rockette. TV and film credits include "The David Letterman Show", *Stepford Wives* (2004) and *Little Manhattan*. Proud member of "Walkerdance", she is grateful to Chet to keep dancing in Jonathan's memory. Love always to her husband, Brendan.

JON PETERSON (*Jon u/s Eugene Fleming*) Broadway: *Cabaret* (Emcee). Off Broadway: *Song Man Dance Man*, *George M. Cohan Tonight!* (George M-Drama Desk Award nominee, Best Solo Performance, 2006 Drama League Honoree, Connecticut Critics' Circle Award, (Outstanding Actor in a Musical), *Have A Heart* (Henry), *The George M. Cohan Revue* (George-Bistro Award Best Performer in a Revue). National Tour and Regional: *Half A Sixpence* (Arthur Kipps) - Goodspeed Opera House. *The*


World Goes Round (Man #1), *The Rocky Horror Show* (Frank 'n' Furter), *Cabaret* (National Tour-Emcee-nominee National Broadway Theatre Award Best Actor in a Musical), *A Chorus Line* (Paul). West End and UK National Tours: *The Sound of Music*, with Petula Clark (Rolf), *A Chorus Line* (Paul), *Sophisticated Ladies*, *Cavalcade* (Joey), *Whoop-Dee-Do!* (Revue), *Cats* (Skimbleshanks, then Mistofolees, then Shimbleshanks again...), *On Your Toes*, *Blitz!* (Georgie). Feature Film includes: *Anna Ballerina*, *Mail Order Wife*, *Surviving Picasso*, *Chish 'n' Fips*. Television includes: "The Bill", "Inmates", "Out On Thursday". Cabaret and concert appearances with Ruthie Henshall, Michael Ball, Bonnie Langford, Stephen Brinberg, Chita Rivera, as well as his own shows, *Comes Love...* and *Skidoo!*. Albums Jon appears in include *The Johnny Mercer Jamboree*, *Skidoo!*, *George M. Cohan Tonight!*



Applebee's
Proudly Supports
Gateway Playhouse

PATCHOGUE
Sunrise Highway
(Route 27)
& Waverly Ave
631-207-5900

Carside To Go
You Call It In. We Bring It Out.™
Available at select locations.
It's a whole new neighborhood.™

RICHARD B. MILLER Assistant Branch Manager First Vice President Investment Officer		ROBERT A. NOGRADY Branch Manager Senior Vice President Investment Officer
WACHOVIA SECURITIES		
Wachovia Securities, LLC 500 West Main Street • Suite 105 • Babylon, NY 11702 Tel 631 661-1600 Fax 631 661-0099 Toll Free 877 613-1600 richard.miller@wachoviasc.com • robert.nogrady@wachoviasc.com		

Beach House
Restaurant



EST. 1923

Lunch & Dinner - Indoor/Outdoor
363 Grove Ave. Patchogue 631-758-3524
(closed Mondays)



NORMAN ORSINGER WOODWORKING

Norman Orsinger Woodworking Ltd.
258 West Woodside Ave.
Patchogue, N.Y. 11772
631.289.0846 - Showroom
516.449.0986 - Cell

*The finest in custom furniture,
cabinets, and millwork.
For more information visit our
website or call us today!*

www.NormanOrsingerWoodworking.com

DEVERE ROGERS (*Ensemble*) is so excited to be doing *Sophisticated Ladies* here at Gateway Playhouse! National: *Five Guys Names Moe*. Off Broadway: *STEP! The Musical*, *Dance Dance Revolution*, *For Flow*. Regional: *Ain't Misbehavin'*, *The Wiz*, *Five Guys Named Moe*, *Little Shop of Horrors*, *Ragtime*, and many more! Education: New York University B.F.A. in Theatre. He also gives thanks to his Momma, his Dad (R.I.P.), family, friends, and to the wonderful cast and crew! Special thanks to his Dereon crew, his brojo, J-bo & Justin, Erica, and to his Tisch Class of 2009! I love you all and God Bless!

CHET WALKER (*Director/Choreographer*) Creator and Co-Choreographer of the Tony and multi-international-award-winning Best Musical *Fosse*, Chet Walker has directed and choreographed original works ranging from *Cirque Du Soleil* to *Jacobs Pillow* where he serves as Director of the Jazz/Musical Theater Program, to original dance pieces

created for Compania Internacional De Teatro Musical, the International Jazz/Musical Theater Dance Company which he co-artistic directs in Buenos Aires, Argentina. Chet began performing on Broadway at the age of sixteen when he appeared in the first revival of *On The Town*. Other Broadway credits include *Lorelei*, *The Ambassadors*, and four Bob Fosse musicals: *The Pajama Game*, *Pippin*, *Dancin'* and *Sweet Charity*. As Director/Choreographer, Chet's extensive stage credits include most recently *Smokey Joe's Café* at the Bethesda Theatre, *Cabaret* at the Terazije Theatre in Serbia where he was first invited by the U.S. State Department; *The Producers* (Israel's equivalent of the Tony Award for his Original Choreography; Argentina's ACE Award nomination for Best Choreography); *The Dancing Man* in Norway, followed by a European tour; *Seven Brides For Seven Brothers* (U.S. National Tour); *Sweet Charity* in the U. S., Holland, Japan, Mexico, Norway and London's

West End; the tenth anniversary tour of *La Cage Aux Folles*; and *Dory! A Musical Portrait* at the Will Geer Theater in Los Angeles. Other productions include *Chicago*, *42nd Street*, *A Chorus Line*, *Follies*, *A Funny Thing Happened On The Way To The Forum*, *Working*, *Kiss Of The Spider Woman* (Mexico's equivalent of the Tony Award for Best Musical), *Singing In The Rain*, *Best Little Whorehouse In Texas* (L.A. Drama-Logue Award for Best Choreography), *Annie Get Your Gun* (Sweden's equivalent of the Tony Award), and *Pal Joey* (Chicago's Joseph Jefferson Award). For television, Chet's credits include the NBC special *Loretta Lynne Country In The Big Apple* and *Just Dance* for Japan's CTV. His work has been seen on *The Rosie O'Donnell Show*, Showtime, and several international television networks, video presentations, and commercials. He was recently profiled in Rose Eichenbaum's *The Dancer Within* and is often featured in *Dance Magazine*. Chet is currently at work on several new musicals including

Diamonds; *Marathon*; *The Reel*; *Valentino*; and *Ain't That A Kick In The Head: The Songs Of Sammy Cahn*. Chet Walker is Artistic Director of Walker Dance, a Jazz/Musical Theatre Dance Company. In recent years Walker Dance has premiered the original Dance Opera, *Seduction* Off-Broadway, performed *Confessions Of Love* at the Jacobs Pillow Dance Festival, and in the near future expects to premiere a new piece entitled *Jazz On Jazz* in New York City.

BRITTANY LOESCH (*Scenic Designer/Scenic Coordinator*) graduated with a BFA in Theater from Pace University in New York City. Previous designs include *Violet*, *Kiss Of The Spider Woman*, *A Perfect Ganesh*, and *Iboga* at Pace University, *Language of Angels* at the Henry Street Experimental Theatre and *Quiet Cry* (Passajj Productions) on Theater Row. Most recently she was the scenic designer for *Brian 'n Brittany's Wedding* at the Jericho Terrace Playhouse. From her humble beginnings, her 8

RELEVÉ DANCE CENTRE

Where everyone is a Star



- Acro
- Break Dance
- Ballet/Pointe
- Hip-Hop
- Jazz (Funk & Cont.)
- Lyrical
- Pre-School Programs
- Kindergarten
- PreJazz/Tap 1st grade
- Tap (Rhythm & Trad.)

AM & PM CLASSES

Birthday Parties

Tumble Buddies (Mommy & Me)

Family Discounts

FREE TRIAL CLASS

889 Montauk Hwy., Bayport, NY

631.472.9322

www.relevedance.com

Professional training in a nurturing environment



"I pride myself in providing the best quality dental care at affordable fees."

Complete Family & Cosmetic Dentistry

Shawn P. Shannon
DMD

- Friendly, Gentle, One Dentist Practice
- Your dental needs and concerns are handled with the care you will appreciate.
- New Patients Welcome

285 Sills Road, Bldg. 15F
East Patchogue • Brookhaven Professional Park

654-1040

For appointments or questions, ask for Ginger

Thanks to all our Patients
who have referred Family & Friends

Call to see if we take your insurance
Sorry, Medicaid not accepted

**LARGE STEAKS
LOW PRICES
BIG VALUE**

**MORE THAN
15 MEALS
FOR UNDER \$15**

**SENIOR CITIZENS DAY
(ALL DAY TUESDAY)**

INCLUDES SOUP OR SALAD,
ENTREE, DESSERT,
COFFEE OR TEA.

FROM \$12.99

**CHOSEN #1 STEAKHOUSE
IN SUFFOLK COUNTY**

FOR BEST BEEF FOR
THE BUCK BY NEWSDAY
4/16/09 PART 2 - "DEALS THAT SIZZLE"

**OVER 25 JUST
LUNCHES \$8.99**

INCL.: SOUP OR SALAD & 2 SIDES

**EARLY BIRD ITEMS
MON.-FRI 3-7 PM
STARTS AT \$12.99**

**BLACK BOARD
SPECIALS DAILY**

KIDS EAT FREE SUN-THURS
ONE WITH EACH FULL PAYING ADULT

WWW.JANDRSSTEAKHOUSE.COM

CALVERTON
727-7218

ROCKY POINT
744-2101

PATCHOGUE
475-9200

MEDFORD
475-3839

STONY BROOK
689-5920

**COMING TO
ISLIP
IN JUNE**

year journey from Intern to Scenic Coordinator has brought her all over the country touring with *Rent* and *Mooseltoe*, as well as designing various children's theatre productions. She is so grateful to have come so far and to be designing for the theater that raised her from a quiet intern to the professional she is today. Thank you Brian, Paul, AD and Mark!!

BRIAN LOESCH (*Lighting Designer/Production Manager*) is proud to be part of the Gateway Family for his twelfth straight season! He's also thrilled that he and his wife Brittany are designing their first production together as a married couple right here at Gateway, where they met eight long years ago! He has previously designed *Forbidden Broadway* (2008 version), *A Christmas Carol*, *The Full Monty*, *A Holiday Spectacular On Ice* (2004 version), *South Pacific*, *Footloose*, *Jesus Christ Superstar*, *Kiss Me Kate*, *Holiday Hop* (1999), *Urinetown*, *Mooseltoe*, *Cabaret* and numerous children's

theatre productions including *Peter Pan* (2004) and *Jungle Book* (2005) for Gateway. Brian graduated with a Degree in Technical Theatre from Suffolk County Community College. Other design credits include *Language of Angels* (Henry Street Experimental Theatre, NYC), *Paraffin Touch* (World Premiere at Suffolk County Community College), *The Man Who Would Be King* (World Premiere at the Antrim Playhouse), and *Kiss Me Kate* (Cape Fear Regional Theatre). National Tour credits include the *George M!* (2003 Candlewood Int./ Mainstage Productions), *Titanic* (2004 Candlewood Int.), *A Holiday Spectacular On Ice* (2004 A Gateway / Candlewood Production), *Mame* (2005-06 Candlewood Int.), *Camelot* (2006-07 Candlewood Int.), and the 2007 and 2008 productions of *Mooseltoe* (Sammelman Productions).

B.G. FITZGERALD (*Costume Designer*) is delighted to return to Gateway Playhouse

where, in previous seasons, he has designed the costumes for *La Cage aux Folles*, *The Mystery of Edwin Drood*, *Broadway Bound*, *Beehive*, *Rumors*, *Anything Goes*, *Me and My Girl*, *Into the Woods*, and *State Fair*, as well as performing the role of the Chairman in *Drood* and Captain Hook in *Peter Pan*. Following *Sophisticated Ladies*, he returns to Chautauqua Opera for a four opera summer season, then back home to Florida for his 12th year at Sarasota Opera's five opera winter season. As for next summer-as they sing in *La Cage*- who knows, the best of times is now!

DOM RUGGIERO (*Production Stage Manager*) Dom Ruggiero, a member of Actors Equity, has been stage managing for the past 27 years. Broadway PSM credits include *The Gathering* starring Hal Linden, *Borscht Belt* on Broadway starring Bruce Adler and Mal Z. Lawrence, and *Ain't That a Kick in the Head* - the Music of Sammy Cahn directed by Chet Walker. 1st National Tours include: *The Cole Porter*

Songbook starring Melba Moore, *The Irving Berlin Songbook* starring Carole Lawrence, *Greetings! Shalom Aleichem Lives* starring Judy Kaye, Bruce Adler and Theo Bikel. Dom has stage managed across the US, Europe, South America and Australia with *Ain't Misbehavin'*, *Phantom*, *Anything Goes*, and *Song & Dance* among many others. He is no stranger to the Gateway Playhouse, having begun his involvement 21 years ago with his production of *Little Shop of Horrors*, which he also directed. Dom has directed numerous shows for Gateway, most notably the 3 productions of *Phantom*, *Tommy*, *Cabaret*, and *Once on This Island*. Dom also directed Gateway Playhouse's production of *Beauty and the Beast* last summer, and will direct the upcoming production of *The Drowsy Chaperone*.

ROBIN JOY ALLAN (*Casting and Artistic Director*) has been the Casting Director at Gateway for the last fifteen years. This will mark her seventh year as Artistic Director.



STAGE DOOR
School of Dance

Summer Classes
now forming



• State-of-the-Art Studio
• Ballet, Tap, Jazz, Hip Hop, Modern
• Weekly Character Dance Camps

655-19 Montauk Hwy • East Patchogue NY
(Just west of McDonald's)

Call now for class schedule
631.654.8858
www.stagedoordancer.com



Lawntasia
LANDSCAPE SERVICES

Design • Patios • Ponds


Roger May

PO Box 652 • Bellport, NY 11713
631.286.0941 • www.lawntasia.com

JOE 281-0376

SHIRLEY SLEEP SHOPPE

618 Montauk Highway • Shirley, NY 11967



Complete Line of Conventional,
Waterbeds & Futons

Bellport Country Club

3-course prix fixe Dinner - \$24.95
Tuesday - Sunday

Reservations recommended

www.bellportcountryclub.com
286-4227



40 South Country Road, Bellport

Official Winery of Gateway Playhouse



Duck Walk Vineyards


231 Montauk Hwy. • Water Mill • NY - (631) 726-7555
44535 Main Road • Southold • NY - (631) 765-3500

www.duckwalk.com

OPEN 7 DAYS • 11 am - 6 pm
Wine Tastings and Tours

*Your Safe,
Solid, Secure
Financial Partner*

Since 1890



**SUFFOLK COUNTY
NATIONAL BANK**

*Twenty-nine branch locations
throughout Suffolk County.*

Visit us on the web at
www.scnb.com

Member FDIC Equal Opportunity Lender

Avino's italian table



Bellport's New Eating Experience!

108 South Country Road, Bellport Village
Phone: 631-803-6416 Fax: 631-803-6418

Robin spent most of her early life performing, directing, musical directing, writing and teaching drama. She then became involved in Casting, spending several years in Manhattan and Los Angeles working in Film and Television. You'll find her name on: *Parenthood*, *When Harry Met Sally*, *Lord of the Flies*, *Side Out*, *Ghost*, *Witness to the Execution*, *Cutters*, along with many other projects, more obscure. She was directly involved in starting the careers of several of today's celebrities. Along with her Artistic and Casting Director duties, she is the force behind Gateway's Acting School Division, where she teaches the advanced classes, and directs the Manhattan Showcase for the school's competitive students. Her daughter Hayley, now twelve, is her joy. She continues to give her heartfelt effort to the evolvement and success of her family's legacy that is Gateway Playhouse.

PAUL ALLAN (Producer) As Gateway celebrates its 60th season, Paul sits in what was once his grandfathers office and reflects on this

monumental achievement. Gateway has always been a family business, and each era has brought significant challenges particularly in the 80's and 90's when shows became more complicated and technically challenging. Additionally, the grounds changed, the buildings were modernized, and the facilities updated. In the most recent decade, the caliber of the artistic staff, performers, musicians, and technicians has risen to a level equaling and sometimes surpassing many Broadway shows. It has been difficult for Paul to find time to do other projects outside of Gateway seasons, but over the years he has been able to work on several NY shows in different capacities, as well as run a touring company with shows traveling around the country and abroad, operate a sister theatre in Connecticut, and maintain a set rental business - where Gateway scenery is used in theatres across the country after appearing on the Gateway stage. Paul appreciates, admires, and honors his family's dedication to the arts and is proud to help continue the legacy. ■



is the official
landscaper of

Gateway Playhouse
all work done by owner
Nicholas J. Harding

631-475-0636

Gateway Playhouse extends its gratitude to the following local restaurants and shops for helping us celebrate our 60 years by participating in the 'gift certificate/coupon book to subscribers' promotion:

Avino's Italian Table, Painters' Restaurant, South Country Inn, Porters on the Lane, Meritage Trattoria, Chachama Grill, Papa Nicks, Pura Vida, La Margherita, Sicilia D'Oro, Brick House Brewery, The Oar Restaurant, The Ground Round, Bobbique, Bellport Jewelers, Summer Salt Beach House, Variety Mart, Circa Something Antiques, Pamela Lerner & Kate Carmel Antiques, Village Paint, Bellport Arts and Framing Studio, and Carla Marla's.

Swan Bakery

All Occasion Cakes

Guy Gagliano

The Official Bakery of Gateway Playhouse

15 South Country Rd., East Patchogue, NY 11772
(631) 475-9626

Swezey

FUEL CO., INC. - EST. 1919

Suffolk's Largest Family Owned Oil Company

- Automatic Oil Delivery Service
- 24-Hour Emergency Service
- Budget Plans That Pay You Interest
- Expert Installation Of Boilers, Burners, Hot Water Heaters & Pool Heaters



475-0270

51 RIDER AVE., PATCHOGUE

DOMINICAN SISTERS FAMILY HEALTH SERVICE

*...a healing presence serving
Suffolk County for over 45 years.*

CERTIFIED NON-PROFIT HOME HEALTH CARE SERVICES

Skilled Nurses & Home Health Aides
Physical, Speech & Occupational Therapies
Social Work & Pastoral Counseling
Long Term Home Health Care
HIV/Aids Care Programs

Call us at our offices

Medford: 631.736.1527

Hampton Bays: 631.728.0181

Wainscott: 631.537.6759

www.dsfs.org

We accept Medicare, Medicaid & most private health & managed care insurance

Richard York

OF PATCHOGUE



631-475-1047
14 South Ocean Ave.
Patchogue

From Patchogue Theatre entrance, 1 block west and four stores south

Quality Footwear for the Entire Family Since 1927

- Friendly, Caring & Knowledgeable Service
- Areas Largest Selection of Sizes & Widths AA-EEEEEE

Rockport, Easy Spirit, Florsheim, New Balance, Stride Rite, Teva, Timberland, Skechers, Ros Hommerson, Hotter, Keds, Reebok, Dyeables, Topsider, Soft Spots, Clarks, Naturalizer, Hush Puppies, Daniel Green, Foamtreads, Toe Warmer Boots, etc.

10% OFF

any purchase with ad only
Excludes Easy Spirit, Dr. Martens & other offers. Expires 12/31/09

ROE AGENCY INC.

Insurance Since 1898

*Personal & Commercial
Life & Health*

- * Homeowners * Automobile *
- * Flood * Boat * Umbrella *
- * Commercial Property *
- * Liability * Business Auto *

All Forms of Insurance

♦ 125 East Main Street ♦

♦ Patchogue, New York 11772 ♦

Phone: 631.475.4000

Fax: 631.475.7648

Stop in today
and visit these

Bellport Shops

EXPLORER OF THE SEAS®
SAILING YEAR ROUND FROM
CAPE LIBERTY, BAYONNE, NEW JERSEY
For more information contact your Royal Caribbean Experts!

Bay Travel & Tours
440 South Country Road • East Patchogue, NY 11772
www.baytravelandtours.com • info@baytravelandtours.com
631-447-6440

*All itineraries are current at the time of printing and subject to change without notice. Certain restrictions apply. ©2008 Royal Caribbean Ltd. Ships registry: The Bahamas. 08011591 • 05/07/2008

\$ Present this ad \$
for on-board credit
with any new
Royal Caribbean
\$ Booking for 2009 \$



South Shore Wines & Liquors

- Weekly Wine Tastings
- Special Orders
- 10% Off Case Purchases

Email for our
Wine Tasting of the Week
southshorewine@gmail.com

440A South Country Rd.
East Patchogue

(631) BUY-WINE
2 8 9 - 9 4 6 3

MVP Automotive

Service Center
HONEST PROFESSIONAL SERVICE



Foreign
&
Domestic

24 Hour Towing

152 South Country Road
Bellport Village, NY 11713
Phone: (631) 776-1010

www.mvpautomotive.com

10% OFF Service with this Ad

Want A "Spa Massage" Without The Spa Prices?

Call Fasulo Chiropractic and experience therapeutic massages at reasonable prices.

"The most relaxing massage I ever had!"
L.S., Westhampton Beach



Embrace Life Holistically

Dr. JoAnna Fasulo - Chiropractor and Applied Kinesiologist
Eileen Valenti & Frank Dallaire: NYS Licensed Massage Therapist

631-289-3939 • 680-C Route 112, Patchogue, NY 11772
(next door to The Pita House)

— Voted Best Chiropractor on Long Island by Long Island Press 2007, 2008, 2009 —
Mention this ad and receive \$10 off a Full Hour Massage

GATEWAY PLAYHOUSE STAFF

ADMINISTRATIVE

Executive Producer..... Ruth Allan
 Producer..... Paul Allan
 Associate Producer..... Jeff Bellante
 General Manager..... Gale Edwards
 Company Manager..... Michael Baker
 Assistant Company Manager..... Stefan Schuette
 Assistant to the Producer..... Kevin Schaefer
 Musical Contractor..... Jeff Hoffman

ARTISTIC

Artistic/Casting Director..... Robin Joy Allan
 Director/Choreographer..... Chet Walker
 Assistant to Director/Choreographer..... Timothy Casper
 Musical Direction..... Jeff Hoffman, Brendan Whiting
 Scenic Designer..... Brittany Loesch
 Lighting Designer..... Brian Loesch
 Costume Designer..... B.G. Fitzgerald
 Resident Sound Designer..... Cody Spencer
 Assistant Lighting Designer..... Justin Hoffman
 Assistant to the Artistic/Casting Director..... Jessica Harrison
 Production Photographer..... Jeff Bellante

BOX OFFICE

Box Office Manager..... Laurie Parr
 Group Sales..... Claire Ward
 House Manager..... Joanne Famiglietti
 Box Office Staff..... Nadine Hazard, Diane Koerber,
 Christina Montalto, Linda Unger, Francesca Welhaus

PRODUCTION

Production Manager..... Brian Loesch
 Production Stage Manager..... Dom Ruggiero
 Wardrobe Supervisor..... Marianne Dominy
 Scenic Coordinator..... Brittany Loesch
 Technical Director..... AD Garrett
 Master Electrician..... Kurt Krohne
 Sound Engineer..... Shane Bourgeois
 Assistant Master Electrician..... Justin Hoffman
 Shop Foreman..... Mark Frederick
 Wardrobe Assistants..... Jessica Spota, Rachael Ralby
 General Technicians..... Matt Anastasio, Courtenay Drakos,
 AJ Lebbons, Keith Reilly
 Sound Consultant..... Dominic Sak
 Production Management Intern..... John Dykstra
 Stage Management Interns..... Ashley Bigge, Matthew Montville
 Electric Interns..... Colin Chauche, Billy Dymond Jr., Avi Meeks
 Sound Intern..... Sarah Ramos
 General Technician Interns..... Robert Bursztyn, Jacob Forstein,
 Zac Kollegger, Peter J. Trawinski
 Wardrobe Interns..... Allen Davidson, Stephen Szymanski

FACILITIES

Facilities Manager..... The Don Harrison
 Concessions Manager..... Carl DeMasi
 Custodial Staff..... Felix Bonilla, Christopher Washington
 Grounds Maintenance..... HTM Landscaping Company
 Facilities Apprentice..... Brendan S. Smith
 House Staff..... Eric Burt, Martin Maningo,
 Raymond Tobia, Edward Wecera
 General Counsel..... Ann L. Nowak & Associates

A Notice About Parking

We strongly encourage our patrons to always park on Gateway grounds. Parking is not allowed on Maplewood Drive north of the back Gateway exit. Parking is also prohibited on the east side of the street (Gateway side). Observe the No Parking signs.

The Village of Bellport has advised us that cars parked in these areas will be ticketed. Please park on the west side of the street, opposite the Gateway fence, between the back exit and South Country Road.

We appreciate your cooperation in making your visit to Gateway as pleasant as possible.

Gateway Playhouse would like to thank our volunteer staff for their dedication and support. It is much appreciated.

Marie Racheck – Head Usher

Missy Atchue, Carmela Aiosa, Olga Belz, Betty Entress, Joyce Gambino, Linda Good,
 Marian Harrison, Peter Haustein, Jean Khabo, Mary Lanier, Connie Merced, Sue Nemet,
 Peter Pernice, Linda Randolph, Sandy Reifel, Allan Ritchie, Terry Seng,
 Alexis Sheridan, Raymond Tobia, Mary Wirth

IF YOU WOULD LIKE TO JOIN OUR VOLUNTEER STAFF CALL 286-0555

Dave's Bellport Cold Beer & Soda

One of the Largest Selections of
Beer on LI (over 700 varieties)

Monthly In Store Beer Tastings
 8-Tap Growler Station
 Knowledgeable Staff
 Fine Cigars • Home Delivery

417 Station Road
 Bellport NY 11713

631.286.0760

www.bellportbeer.com

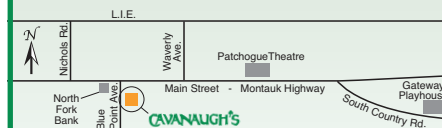
CAVANAUGH'S
 "Let's Have Fun" Est. 1986

Lunch Served
 Tuesday - Sunday, Starting at 11:30 a.m.

Late Night Dining
 Kitchen Open Till 11 p.m., Tuesday - Sunday

Open 6 Days - Tuesday-Sunday
 11:30 a.m.-2 a.m.

**your neighborhood
 restaurant & pub**



www.cavanaughsbbluepoint.com
 255 Blue Point Avenue, Blue Point
 631-363-2666



★ ★
 Summer
 Classes Enrolling
 Now.

ACTING AND MUSICAL THEATRE TRAINING

all levels of acting for all ages thru adult



GATEWAY ACTING SCHOOL

LEARN FROM THE PROFESSIONALS!

286-9014

**OUR FUTURE DEPENDS ON THE DREAMS OF OUR YOUTH –
INSPIRE YOUR KIDS AND GIVE THEM A CULTURAL FOUNDATION...**

CHILDREN'S THEATER **YOU'LL BE GLAD YOU DID**

PINOCCHIO



Friday, July 10
at 10:30 am & 1 pm
Performed by Yates Musical
Theatre on the Patchogue
Theatre stage

The whimsical and magical
story of a puppet on his
journey to becoming a real boy
is told in song and dance.



Friday, July 17 at 10:30 am & 1 pm
Performed by Theaterworks USA on the Patchogue Theatre stage
We bring back the popular- Dinosaurs, from Theaterworks USA.



Friday, July 24
at 10:30 am & 1 pm
Performed by Yates Musical
Theatre on the Patchogue
Theatre stage

A classic story of good over
evil and love enduring, with
songs, duels, antics, comedy
and a happy ending all rolled
into one.



Friday, August 7 at 10:30 am,
Friday, August 14, 21 at 10:30 am & 1 pm
Saturday, August 8, 15, 22 at 10:30 am
Presented by Gateway Playhouse on our Bellport stage

Join Dorothy, the Lion, the Tinman, the Scarecrow
and Toto too, over the rainbow to the Land of Oz. The
story and all the wonderful songs you know and love
is performed by a company of professionally trained
young actors that your kids will delight in meeting.



Friday, August 28
at 10:30 am & 1 pm
Performed by Yates Musical
Theatre on the Patchogue
Theatre stage

The classic Brother's Grimm story
spins musical gold as a fair young
maiden marries a prince due to
her art with a spinning wheel.

**Gateway's Children's Theatre is the perfect backdrop for customized
birthday parties and camp excursions.**

All Seats: \$10.00 • 25 or more : \$9.00 • 100+: \$5.00 (Certain restrictions apply) **RESERVED SEATING**



Sorry, Children aged 2 or older only. No infants please, as they disturb others from enjoying the performance.
Every child, out of the womb, must enter with a purchased ticket.

*Shows subject to change without notice

Gateway PLAYHOUSE **60** *Years of Theater*

**Long Island's Premiere
Professional Theater**

2009 Broadway Series

MESHUGGAH-NUNS! June 17-July 5 In Bellport

MISS SAIGON July 8-July 25 In Patchogue

THE DROWSY CHAPERONE July 29-August 22
In Bellport

**DIRTY ROTTEN
SCOUNDRELS** August 26-September 12
In Patchogue

A CHORUS LINE September 16-October 11
In Bellport



CALL OR LOG ON FOR INFORMATION: 631-286-1133 1-888-4TIXNOW WWW.GATEWAYPLAYHOUSE.COM

PORTERS

— *on the lane* —

RESTAURANT • BAR • CATERING



For reservations or catering info:

631-803-6067

www.portersonthelane.com

email: PortersBellport@aol.com fax: 631-803-6069

**19 Bellport Lane
Bellport Village NY 11713**