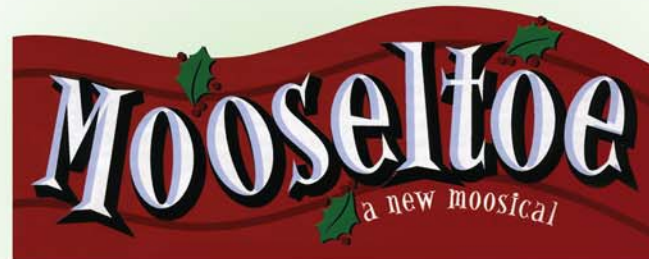


HOLIDAY SEASON 2007  
**PLAYBILL**



**NOVEMBER 17 - 24**

<sup>The</sup>  
**Nutcracker**  
**on ICE**

**NOVEMBER 20 - 24**

*Gateway*  
**PLAYHOUSE**

**GERSHOW**



**RECYCLING**

CONSERVING THE FUTURE BY RECYCLING THE PAST

GERSHOW RECYCLING APPLAUDS THE  
GATEWAY PLAYHOUSE FOR ITS CONTINUED  
DEDICATION TO BRINGING THE PERFORMING ARTS  
TO LONG ISLAND.

AT THE CLOSE OF ANOTHER YEAR WE  
GRATEFULLY PAUSE TO WISH OUR EMPLOYEES,  
OUR CUSTOMERS, AND OUR FRIENDS A HEALTHY  
AND HAPPY HOLIDAY SEASON.

*SAM GERSHOWITZ, KEVIN GERSHOWITZ,*

*ELLIOT GERSHOWITZ, JOE BERTUCCIO, SCOTT BOHAN*

*Let the performance begin!*



**Buyers & Processors of Recyclable Metal and Iron**

BAYSHORE • BROOKLYN • LINDENHURST • NEW HYDE PARK • MEDFORD

631.289.6188 gershowrecycling.com

# Pine Grove Inn

Established In 1910. Famous for almost 100 Years.

## Traditional Thanksgiving Day Feast

With All The  
Trimmings \$24<sup>95</sup>



Reservations required. Open Thanksgiving from 12-9pm

10 Different German Beers - 5 On Tap

Make Your Holiday Reservations Now –  
Open Christmas Eve, New Year's Eve & New Year's Day  
Also Available For Corporate Holiday Parties

Happy Hour At The Bar Friday 4pm-7pm • Complimentary Buffet On Fridays  
Live Band Every Friday & Saturday

## Prime Rib Night Thursdays

\$25<sup>95</sup> King Cut \$22<sup>95</sup> Queen Cut

Choice of Soup or Salad, Potato and Vegetable



Hours: Closed Mondays  
Check our website  
[www.pinegroveinn.com](http://www.pinegroveinn.com)  
for the current entertainment schedule

**1 First Street  
East Patchogue  
631-475-9843**

**\$500 Gift Certificate**  
*Toward Your Lunch Check*  
of \$35 or more

With this certificate. Expires December 31, 2007. Reservations suggested.  
Not valid with other offers. One voucher per couple. Not valid on holidays.

**\$1000 Gift Certificate**  
*Toward Your Dinner Check*  
of \$65 or more

With this certificate. Expires December 31, 2007. Reservations suggested.  
Not valid with other offers. One voucher per couple. Not valid on holidays.



*The Best Burgers & Wraps You'll Ever Have!*

**Sonoma Grill**  
RESTAURANT & BAR

BURGERS • STEAKS • SEAFOOD • PASTA • WRAPS

**Monday thru Friday:  
Lunch Specials**

11:30-4:00 p.m.

**\$8.95**

**Wednesday  
Pasta Night**

4-10 p.m.

**Sonoma Bar Party**

All Pint Beer \$3.00

All Martinis \$6.00

*All Day! Every Day! Closed Tuesdays*

**On or Off Premise Catering**

*We Can Cater Your Holiday Party – 20-120 Guests in our  
Private or Semi-Private Dining Room*

**5745 Sunrise Hwy., Holbrook • 218-3888**

*Sun Lakes Shopping Ctr. (Stop & Shop) Broadway Ave. Exit off Sunrise Hwy.*

*Open 6 Days for Lunch & Dinner - Closed Tues.*

*Visit Our Website: [www.sonoma-grill.com](http://www.sonoma-grill.com)*

**All Our Food Is Homemade & Prepared to Order**

**WINE & DINE MONDAYS FREE BOTTLE OF WINE**

*With Purchase Of 2 Entrees. With Coupon. Cannot Be Combined. Dine-In Only.*

**BLUE**

Restaurant.Cocktails.Events

**COCKTAILS  
DINING  
DANCING**

Join us at **BLUE**  
for **Price Fix**

**\$23/pp - Three Course  
Dinner**

**Served Daily:\***  
**Monday-Friday 4:00pm-7:00pm**  
**& Sunday 1:00pm-9:00pm**

\*Not available on Holidays

**Private Rooms & Catering Available**

**What's Happening at BLUE?**

**Every Friday from 4-7PM:**

Long Island's Premiere Happy Hour  
Complimentary elegant buffet, All drinks ½ price, Live Entertainment  
Live Band or DJ from 9:30 to Close

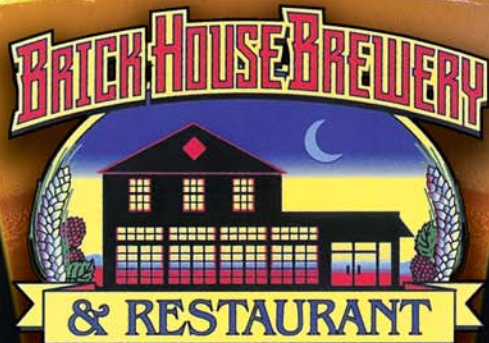
**Saturday Nights:**

Ladies Night - Ladies Drink Free from 9:30-11PM (only @ the bar)  
DJ from 9:30 -Close

**The Place to Party for the 30 & Over Crowd!**

To make a reservation or to inquire about catering  
call: 631-363-6666 • [www.restaurantblue.com](http://www.restaurantblue.com)  
7 Montauk Hwy • Blue Point NY 11715





**Hand Crafted Brews  
Made on Premises**

**LIVE MUSIC**

Tuesday - Open Mic w/David James

Wednesday - Live Blues

Thursday - Karaoke

Friday & Saturday - Best LI Bands

Sunday - Open Blues Jam w/Joseph Wales

**Friday Happy Hour Specials**

**Catering For 25-100 People**

**3 Private Rooms**

67 West Main Street • Patchogue • 631-447-BEER  
(2337)

Open 7 Days A Week For Lunch & Dinner

**10% Off Dinner with Gateway Ticket Stub**

Limited to 1 per table, offer expires 1/31/08

**GATEWAY PLAYHOUSE  
PRESENTS**



Co-Producers

**JIM SEMMELMAN &  
TERRY KIPPENBERGER**

Musical Score  
**GEORGE KRAMER**

Book & Lyrics  
**JIM SEMMELMAN**

Stage Manager  
**MELODY ERFANI**

Scenic Design  
**KELLY TIGHE**

Lighting Design  
**BRIAN LOESCH**

Technical Director  
**COREY KLOOS**

Master Electrician  
**JOSE SANTIAGO**

Wardrobe Supervisor  
**ERIC BERGRIN**

Company Manager  
**AARON KELLEY**

Director/Choreographer  
**JIM SEMMELMAN**

Tour Management - Mainstage Artists Management

*Wm. J. O'Neill*  
Sales Exchange Co., Inc.  
Jewelers and Collateral Loanbrokers

Classic and  
Contemporary



Platinum  
and Gold

Jewelry designs that will  
excite your senses.

Expert Jewelry Repairs

One East Main St., Patchogue 631.289.9899 www.wmjoneills.com  
Mention this ad for 10% discount on purchase

*Bellport  
Country Club*

www.bellportcountryclub.com



- **Always open to the public**
- Conveniently located in the picturesque village of Bellport on South Country Road - just minutes from Gateway Playhouse and the Patchogue Theatre
- Great for large groups or an intimate dinner for two
- Restaurant overlooks the lush golf course and the Great South Bay
- A favorite for pre- or post-show dining
- Reservations recommended, call **286-4227**

Also visit *Irish Coffee* Pub on CARLETON AVENUE in EAST ISLIP • 277-0007



a new moosical

## CAST

MOOSE!TOE .....SCOTT LILLY  
PAPA .....DAVID BAXTER  
MAMA .....ERNEST MC COY, III  
SIS .....JENNYLIND PARRIS  
PENGUIN 1 .....HEATHER HUGHES  
PENGUIN 2 .....NICOLE BREANNAE DI MATTEI  
PENGUIN 3/SNOW WOMAN .....ANNE MONTAVON  
WALRUS/SNOWMAN .....CLINT CARTER  
SANTA .....SETH FOX  
MALE ELF .....TIM WALTER  
FEMALE ELF .....REBECCA MONTALBANO  
SNOWBALL .....VITO LEANZA

**Frank R. Egan, DDS, PC**  
Certified, American Board of Orthodontics



Hospital Road Professional Center  
250 Patchogue-Yaphank Road • Suite 14  
East Patchogue, NY 11772 • (631) 289-3990

**www.TeethOnTheMove.com**



*Sprinkles*



Ice Cream Parlor & Coffee Cafe

**DRIVE THRU**

OPENS @ 7 AM ~ OPEN LATE  
BUY ONE GET ONE FREE SMALL CUP OR CONE  
(w/coupon)

COFFEE ~ MUFFINS ~ CANDY ~ SMOOTHIES  
HOT SOUP ~ GIFT BASKETS ~ PARTIES n MORE

168 MONTAUK HWY • BLUE POINT NY 11715  
**631-237-4544**

JOE 281-0376

**SHIRLEY SLEEP SHOPPE**

618 Montauk Highway • Shirley, NY 11967



Complete Line of Conventional,  
Waterbeds & Futons



## SPOTLIGHT ON...

# The Set of MOOSELTAE

I'm thrilled to be designing a new set for "Mooseltae". In a day and age so influenced by technology, the opportunity to work on a simple tale with a clear message is very refreshing. I found the inspiration for the design in the richly illustrated pop-up books I grew up with. While the set is decidedly whimsical, we've made a concerted effort to create a world that's accessible to kids, but also witty and sophisticated. All of this is achieved through meetings with the director, fellow designers, and my 3 year old goddaughter, McKenna (who suggested we use glitter).

One thing unique to theater (and this production in particular) is the fact that all you see on stage is hand made. The set for Mooseltae was designed and built entirely on the Gateway property by a staff of four talented full time carpenters and two painters. All of the pieces are custom designed for this production and will leave here with the show to tour. Everything breaks down into "bite-size" pieces and hits the road with the cast. Sets, props, costumes, lighting and sound equipment, and show merchandise all fit neatly into one truck that tours the country.

It's always fun to start a holiday tradition. Everyone who worked on the set for "Mooseltae" hopes that you have as much fun watching the show as we had making it.

— KELLY TIGHE,  
*Scenic Designer*



Happy Hour  
Tuesday - Friday  
12-2 p.m.  
& 4-7 p.m.

[www.theoar.com](http://www.theoar.com)



*Enjoy The Winter on the Water*  
Open for Lunch & Dinner Tuesday thru Sunday

Located on the Patchogue River • 264 West Avenue, Patchogue • 654-8266

## This is the story of MOOSELTAE

And his moose family that lives  
In the ice  
And the snow.



A story to tell  
A story to hear  
Of a moose who wants to fly  
With Santa's reindeer.

He starts on his quest.  
His mind on one thing.  
To seek and to find  
The great wise Mooseking.

Through trial and error  
Through friends and through foes  
He continues he journey  
He follows his nose.

He's about to give up  
He's reduced down to tears  
When suddenly one night  
The great Mooseking appears.

He teaches our hero  
What we all can retrieve  
To look deep inside  
And learn to believe.

The North Pole's in a panic  
And so is St. Nick  
It's one of the reindeer.  
It's Blitzen...he's sick.

I won't tell you much more  
But, suffice it to say  
Mooseltae IS the hero  
Mooseltae saves the day!



# South Country Inn

*Fine Italian and Continental Cuisine*

**Stop in after the Show for Dessert or Cappuccino - Full Bar Available**

*A short drive from both theatres on South Country Road.*

**Holiday Parties On or Off Premises—  
Pick-up Trays for Your Office Party!**

Reservations recommended

668 South Country Rd., East Patchogue **758-1919**

Complimentary glass of wine  
with your lunch or dinner when  
you present show tickets or this ad.

**Moderately Priced Dinners  
Starting at \$13.95**

**Early Bird Specials Served  
Complete - 3:30 - 6 PM  
Tuesdays-Thursdays & Sundays**

**Daily Lunch Specials  
Tuesday - Sunday**



## Irish Crossroads Ltd.

*Irish Crystal/China  
Handknit Sweaters  
Celtic Jewelry  
Gift Registries*

*Gift Shop*



*22 East Main Street  
Patchogue, NY 11772  
631-569-5464  
Fax: 631-569-5465  
irishcrossroads4@aol.com*

**Spend \$75.00 and receive a free claddagh pendant**  
(with ad / expires 12.31.07)

## The Perfect Accent Inc.

**For the Spirit of Your Home**

*Novel Home Decor & Gift Items*

*Call for Schedule of Live Entertainment and Events  
Calling singers, clean comedians, "handmade" crafters*



*Imported & Hand Painted Items, Stained Glass  
Lamps & Panels, Decorative Screens,  
Wall Art, Sculptures, Teapots,  
Trunks, Christmas Novelties*

(631) 399-4125 • 1473 Montauk Hwy, Mastic  
1 mile east of William Floyd Pkwy./southeast from LI&E and Rte. 27



is the official  
landscaper of

**Gateway Playhouse**

all work done by owner

Nicholas J. Harding

**631-475-0636**

**GATEWAY PLAYHOUSE  
PRESENTS**

# The Nutcracker on ICE

**a traditional ballet on ice in two acts**  
performed by

**THE ST. PETERSBURG STATE ICE BALLET COMPANY**

Music by

**PETER ILLICH TCHAIKOVSKY**

Lighting Designer

**OLEG STEPANOV**

Company Manager

**OLGA ROSHA**

Senior Wardrobe Master

**TATIAN ZAIKINA**

Technical Director

**MIKHAIL SHAVDATUASHVILI**

Set by

**ELENA MARKOVA**

Senior Makeup Artist

**IRINA NIKOLAEVA**

General Manager

**MIKHAIL KAMINOV**

Principal Choreographer

Merited Artist of Russia

**KONSTANTIN RASSADIN**

Producers and Exclusive USA Management

BRESNER ARTISTS, INC. [BRESNERMGT@AOL.COM](mailto:BRESNERMGT@AOL.COM)

TEL. 917-922-7678 [www.bresnerartists.com](http://www.bresnerartists.com)

Transportation provided by Colonial Transportation, Inc.  
282 Railroad Ave., Sayville, NY 11782 • 631-589-7911



# The Nutcracker on ICE

## PROLOGUE:

A dollmaker, Drosselmeier tells an old story about a beautiful Princess, a Nutcracker and a wicked Mouse King.

## ACT I

Shtalbaum's house. Guests with their children are gathering to celebrate the Christmas holiday. Drosselmeier was invited too and has brought every child a present. Drosselmeier tries to give someone his favorite toy - a Nutcracker, but because it is so ugly, no one wants it. Only Clara feels sorry for the doll and accepts it as a gift. The evening wears on and the clock strikes midnight. It is time for everyone to go home and for the children to go to bed. But after all have left, the magic of Drosselmeier causes the Christmas tree to grow larger and mice appear. They want to destroy all the toys, but the Nutcracker with his soldiers join in battle. Clara comes to their aid and the wicked mice are defeated. Suddenly the ugly Nutcracker turns into a handsome Prince and the little girl Clara turns into a beautiful Princess. The Prince leads her through snow-covered woods and into the Kingdom Confituremburg.

## ACT II

Drosselmeier with his toys is preparing to greet Clara and the Prince. When they arrive, he gives Clara a magic wand to wave and start the celebration. Chocolate Dance (Spanish) Coffee Dance (Arabian) Tea Dance, (Chinese) Clowns ( Russian Dance) and Pastorale (Sugar Candies) perform for the Prince and Princess. The Celebration comes to an end and the fairy-tale Kingdom Confitureburg disappears. Clara is suddenly back as a little girl with her favorite toy, Nutcracker.



## CAST OF CHARACTERS

Clara: .....	Elena Khailova, Yulia Ageeva,
Nutcracker: .....	Viacheslav Vodopyanov, Danil Vedernikov
Clara as Princess: .....	Yulia Ageeva, Elena Khailova
Prince: .....	Oleg Yagubkov, Roman Zarutskiy
Drosselmeier: .....	Sergey Golodnev, Alexander Kuznetsov
Doll: .....	Marina Maslova, Vladislava Blagonravova
Harlequin: .....	Danil Vedernikov, Roman Zarutsky, Alexander Kuznetsov
Blackmoor: .....	Danil Vedernikov, Sergey Golodnev
Mrs. Shtalbaum: .....	Natalia Viazemtseva
Mr. Shtalbaum: .....	Valery Gilnich
Mouse King: .....	Oleg Yagubkov, Oleg Ryabov
Lead Snowflakes: .....	Yulia Ageeva, Khailova Elena, Alina Kulikova
Spanish Dance: .....	Vladislava Blagonravova, Alina Kulikova, Alexander Zavatskov, Alexander Kuznetsov
Oriental Dance: .....	Oleg Riabov, Elena Khailova, Ekaterina Miklina, Oleg Yagubkov, Yulia Ageeva, Roman Zarutsky
Chinese Dance: .....	Marina Lekhmus
Trepak: .....	Ekaterina Galyas, Roman Zarutskiy, Marina Maslova, Danil Vedernikov
Pas de Trois: .....	Ekaterina Galyas, Valdislava Blagonravova, Alexandra Igolkina, Alina Kulikova, Tatiana Shchelokova, Viacheslav Vodopyanov







# Enjoy an old-fashioned shopping experience... Shop Historic Bellport Village this holiday season!

  
**BELLBROOK REALTY, INC.**  
Each Office Is Independently Owned And Operated.


**JOANNE D. TUTHILL**  
Licensed Real Estate Salesperson/Notary Public

(631) 289-4000 EXT. 21 Business  
(631) 289-4006 FAX  
(516) 521-3653 Cellular  
tuthi4@aol.com www.cbbellbrookrealty.com  
440 South Country Road, East Patchogue, NY 11772

**PAPA NICKS PIZZA**

Gyros  
Salads  
Heros  
Dinners



Daily Lunch  
Specials

286-6400  
117C-South Country Road, Bellport Village, NY

**BELLPORT  
JEWELERS & GALLERIES**



**631-286-7700**  
WWW.BELLPORTGALLERIES.COM  
5 BELLPORT LANE  
BELLPORT, NY 11713

*Need Cash  
for the  
Holidays?*

*We're paying the  
highest prices  
in 25 years for  
Jewelry-Coins-  
Currency!*

*Stop in or we'll  
come to you!*

*Pamela Lerner  
&  
Kate Carmel  
Antiques*



Tel 631-803-2689  
147 Main Street,  
Bellport NY 11713  
e-mail pamelalernerantiques@msn.com

**www.pamelalernerantiques.com**

  
**AUTO  
GLASS**  
*Bellport Glass & Mirror*

- Call us BEFORE your Insurance company
- INSURANCE DIRECT BILLING
- AUTO GLASS
- CUSTOM MIRRORS
- TABLE TOPS
- INSULATED GLASS
- STORE FRONTS
- RESIDENTIAL GLASS

**631.286.1885**  
150A Main Street, Bellport, NY 11713

*Bellport  
Bakery  
& Sweets*



1 Free Small Coffee with Any Purchase  
OR  
50¢ off any pastry with purchase of \$5 or more  
(Not to be combined with other offers)

128 South Country Rd • Bellport, NY 11713  
Ph: 631.456.5457 • Fax: 631.456.5457

  
**PHOENIX  
FINE ARTS  
GALLERY**

139 South Country Rd. Bellport • 776-0811  
www.PhoenixFineArtsGallery.com

**FOR THE HOLIDAYS GIVE ART**  
Paintings, Sculpture, Glass Art,  
Pottery and Fine Handcrafted Jewelry.  
**WE DO CUSTOM PICTURE FRAMING**

**Merckling Family Chiropractic, P.C.**

**DR. JOSEPH R. MERCKLING**



16-2 Station Road  
Bellport, NY 11713  
Telephone: (631) 286-2300

*Don't Let Pain Interfere With Your Life!*  
Massage Therapy • Acupuncture  
www.bellportfamilychiropractic.com

  
**Marylou Swan  
Realty Corp.**

An Established  
Tradition of Service

FOR ALL YOUR  
REAL ESTATE NEEDS  
CALL YOUR LOCAL BROKER  
SERVING THE AREA FOR  
OVER 20 YEARS!

www.swanproperties.com  
322 South Country Rd.  
East Patchogue, NY 11772

- Residential
- Commercial
- Free Market Analysis
- Notary Public



**631-289-5550**  
**631-286-1222**

  
**BELLBROOK REALTY, INC.**  
Each Office Is Independently Owned And Operated.



**JANIS PALERMO**  
Licensed Real Estate Salesperson

(631) 289-4000 Business  
(631) 289-4006 FAX  
(631) 872-3693 Cellular  
www.cbbellbrookrealty.com  
440 South Country Road, East Patchogue, NY 11772

*Happy  
Holidays*



*Bon  
Appetite*

**THE BELLPORT**

Steps away from the Gateway Playhouse

★★★★  
New York Times Review

159 South Country Road, Bellport, New York 11713  
(631) 286-7550

**Sign up today for your FREE  
Bellport Discount Card!**



Save money by supporting your local businesses!  
To receive your card just fill out this form and mail to:  
Bellport Chamber of Commerce, PO Box 246 Bellport NY 11713  
Check our website [www.bellportchamber.com](http://www.bellportchamber.com) for the latest  
discounts and offers!

Name: \_\_\_\_\_  
Address: \_\_\_\_\_  
State: \_\_\_\_\_ Zip: \_\_\_\_\_  
E-mail: \_\_\_\_\_

## MIKHAIL KAMINOV

*Director General*

Mr. Kaminov, General Director of the St. Petersburg State Ice Ballet, was the reiterated champion of Leningrad and Russia in pair figure skating and a Master of Sports of Russia. Mr. Kaminov joined the St. Petersburg troupe in 1967, the day of its founding, and was a leading soloist. Upon finishing his performing career in 1988, he became the Deputy Manager of the Ballet on Ice and in 1994 assumed the position of General Manager. Mr. Kaminov and his wife Valentina, a former principal of the company, have one son.



Photographed by Hsuehchen

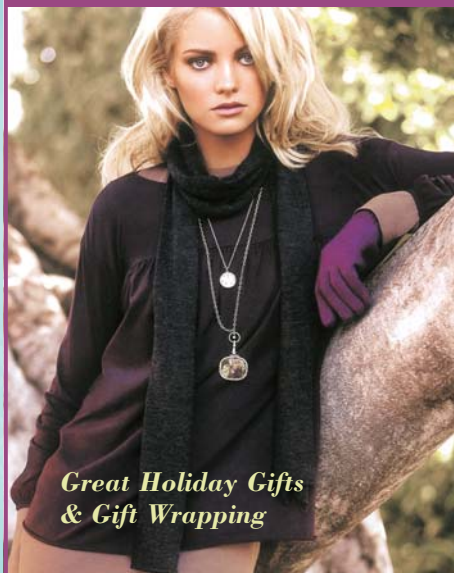
## KONSTANTIN A. RASSADIN

*Principal Choreographer  
of the Saint Petersburg Ice Ballet,  
Merited Artist of Russia*

Upon graduation from the world famous Academy of Russian Ballet named after A. Vagonova, Konstantin was immediately invited to join the renowned ballet troupe of the Maryinsky Theatre of Opera and Ballet of St. Petersburg (formally of the Kirov Theatre). For 23 years he occupied the position of ballet "star", having brilliantly premiered more than two dozen leading roles and performing with ballerinas such as Natalia Dudinskaya, Alla Shelest, Alla Osipenko, Natalia Markarova, and danseurs Konstantin Sergeev, Rudolf Nuriyev and Mikhail Baryshnikov. He worked with the great ballet masters Yuri Grigorovich and Leonid Yakobson and studied at the St. Petersburg Conservatory. After receiving his first award for choreography, Mr. Rassadin began producing classical ballets and programs for theatre throughout the USSR and in 1980 joined the St. Petersburg Ice Ballet in the capacity of its Principal Choreographer. His latest works for the company are "Romantic Poem" and the full-length holiday spectacular, "Nutcracker". ❄

# Shop Downtown Sayville

## Debra Canavan CLASSICS



*Great Holiday Gifts  
& Gift Wrapping*

*Gift Certificates*

**Casual, Career & Cocktail**

53 Main Street, Sayville – 631.563.9385

## BILL KINNEY GALLERY

OBJECTS OF ART AND CUSTOM FRAMING

- LONG ISLAND PHOTOGRAPHY
- BEACH GLASS JEWELRY
- GLASS SCULPTURE
- OIL AND ACRYLIC PAINTINGS

112 MAIN STREET • SAYVILLE, NY  
631-750-9111  
WWW.SPADAGRAPHIX.COM

**20% OFF  
CUSTOM FRAMING**

With this coupon. Not valid with other offers or prior purchase.  
Offer expires 1/15/08

## Silica

ARTISAN JEWELRY DESIGNS

**Visit Us For A Unique  
Shopping Experience!**

Featuring the  
Work of Over 50  
Artisan Jewelers.

38 South Main St.  
SAYVILLE  
631.803.6111

## Swan Bakery

All Occasion Cakes

Guy Gagliano

The Official Bakery of Gateway Playhouse

15 South Country Rd., East Patchogue, NY 11772  
(631) 475-9626



**HARBOR CRAB CO.**  
Patchogue New York

**RESTAURANT & MARINA**

[WWW.HARBORCRAB.COM](http://WWW.HARBORCRAB.COM)

**Holiday Catering in  
Four Separate Areas**

**Lunch & Dinner 7 Days a Week  
Live Music on Weekends**

**Join us for a Family Dinner  
AFTER THE SHOW!!!**

**"...Food & Beverage to Make  
Your Tummy Smile!"**

116 Division Street, Patchogue  
(Only 2 minutes from the Theatre)

**CALL 687-CRAB  
(2722)**

*Dates Still Available  
for Holiday Parties!*

**Cassel**  
**GMC TRUCK SALES**

Acadia



**GMC**  
WE ARE PROFESSIONAL GRADE™

550 North Ocean Avenue • Patchogue, NY  
3 Miles South of LIE • 1 Block North of Sunrise Hwy.

**1-800-758-5811**  
**SALES • PARTS • SERVICE**  
[WWW.CASSELTRUCKS.COM](http://WWW.CASSELTRUCKS.COM)



**MONI'S  
AUTO WORKS**

**It's in the Details**

Expert Auto Collision Repairs  
All Insurance Accepted

1791 Montauk Highway  
Bellport, NY 11713

**286-2116**

Unforgettable moments






**PANDORA**  
*Jewelry*

**ROSE**  
JEWELERS  
CELEBRATING LIFES EVENTS SINCE 1946

Patchogue, 74 E. Main Street (516) 476-1441  
Southampton, 87 Main Street (516) 283-6787

# The St. Petersburg State Ballet On Ice

2007 marks the 40th Anniversary of one of the jewels of Russia, THE ST. PETERSBURG STATE BALLET ON ICE which has toured worldwide throughout Europe, Asia, the Middle East, South Africa, South America, Canada and the USA, performing at the Kennedy Center in Washington D.C., amongst other celebrated venues. In this remarkable presentation you'll hear the great score by Tchaikovsky performed in a most unique way, as the company's world-class figure skaters effortlessly leap and glide on the ice backed by magnificent sets and adorned with exquisite costumes – all together creating a sophisticated and magical interpretation of this great Holiday classic.

"In 1892 Marius Petipa and Lev Ivanov premiered the original Nutcracker in St. Petersburg. As we embrace the twenty-first century, our fascination with faster cars, faster com-



puters, and faster communication finds an apt metaphor in this version of the Nutcracker—one that literally whirls by. This production, choreographed by Konstantin Rassadin, premiered in 1996. Like the traditional ballet version, it tells the story of the young girl Clara, who receives a Nutcracker doll from Herr Drosselmeier, that miraculously becomes human, battles mice, and transports her to The Kingdom of the Sweets."

Kate Mattingly, *Dance Magazine*



# Is Your Dryer Vent System Clean & Safe?



**AVOID DRYER FIRES...  
BRING YOUR DRYER VENT UP TO CODE**



**631.744.1552**

**WWW.DRYERVENTWIZARD.COM**

**RONAN TYNAN**

Photo by  
Walter Petrule,  
Patchogue Theatre,  
Feb. 17, 2007

ronantynan.net

**Patchogue Theatre**  
**Feb. 16, 8:00 PM**  
On Sale Now for Holiday Giving  
[www.patchoguetheatre.com](http://www.patchoguetheatre.com)

Produced by the Greater Patchogue  
Foundation & Bay Shore Hibernians

**Swezey**

**FUEL CO., INC. - EST. 1919**

**Suffolk's Largest Family  
Owned Oil Company**

- Automatic Oil Delivery Service
- 24-Hour Emergency Service
- Budget Plans That Pay You Interest
- Expert Installation Of Boilers,  
Burners, Hot Water Heaters &  
Pool Heaters



**475-0270**

**51 RIDER AVE., PATCHOGUE**

**ROE AGENCY INC.**  
*Insurance Since 1898*

*Personal Insurance*  
*Commercial Insurance*  
*Property, Casualty*  
*Life*  
*Health*  
*Financial Services*

♦ 125 East Main Street ♦  
♦ Patchogue, New York 11772 ♦  
Phone: 631.475.4000  
Fax: 631.475.7648

**"Moving Forward  
in Reverse"**

**WITH A REVERSE MORTGAGE**

- Continue to own your home
- Make no monthly payments
- Tax free income



**HOME  
MORTGAGE  
SERVICES**

For a personal consultation call me,  
Patricia Whitlock  
Reverse Mortgage Advisor -

**631.758.9200**

ext. 228

[www.ReverseMortgageChoices.com](http://www.ReverseMortgageChoices.com)

REGISTERED MORTGAGE BROKER, NYS, CT, MA, FL BANKING DEPARTMENT.  
ALL LOANS ARRANGED THROUGH 3RD PARTY PROVIDERS





# Bellport CHOWDER HOUSE

*In The Bellport Hotel  
Built 1896*



*An Eating and Drinking Tradition*

**FULL MENU**

**FULL BAR**

Open Daily For Lunch and Dinner  
Seven Days A Week

Sunday - Thursday till 11:00 p.m. Friday & Saturday till Midnight

**SPECIALIZING IN FRESH LOCAL SEAFOOD  
AT AFFORDABLE PRICES**

**STEAKS - CHICKEN - PASTA**

*Before and After the Show You'll Want to Meet and Eat At  
THE CHOWDER HOUSE*

**TAKEOUT**

**CATERING**

19 Bellport Lane • Bellport Village • 286-2343

# Searles GRAPHICS, INC.



DESIGN  
**Innovation**

PRE-PRESS  
**Precision**

MARKETING  
**Solutions**

PRINTING  
**Versatility**

56 Old Dock Road | Yaphank NY 11980  
† 631.345.2202 | f 631.345.0975 | [www.searlesgraphics.com](http://www.searlesgraphics.com)



## ACTING AND MUSICAL THEATRE TRAINING

all levels of acting for all ages thru adult



## GATEWAY ACTING SCHOOL

LEARN FROM THE PROFESSIONALS!

# 286-9014

## How do you spell great banking?



### The Smart Package

- **Interest Checking** Free with Direct Deposit
- Premium **Money Market** Savings Account with no monthly maintenance fees
- **And more...**

Ask an HSBC representative how to open up a Smart Package today!

**Bellport Office**  
20 Station Road  
Bellport, NY 11713  
631-286-3800

**Patchogue Office**  
325 E. Main St.  
Patchogue, NY 11772  
631-475-2600

**Mastic Office**  
1718 Montauk Highway, Mastic, NY 11950 • 631-281-6400

**HSBC**   
The world's local bank

us.hsbc.com 1-800-975-HSBC

Issued by HSBC Bank USA ©HSBC Bank USA 2006

## A NOTICE ABOUT PARKING

We strongly encourage our patrons to always park on Gateway grounds. Parking is no longer allowed on Maplewood Drive **north** of the back Gateway exit. Parking is also prohibited on the **east side** of the street (Gateway side). Observe the No Parking signs.

The Village of Bellport has advised us that cars parked in these areas **will be ticketed**. Please park on the west side of the street, opposite the Gateway fence, between the back exit and South Country Road. We appreciate your cooperation in making your visit to Gateway as pleasant as possible.

# GATEWAY PLAYHOUSE STAFF

## ADMINISTRATIVE

Executive Producer ..... Ruth Allan  
Producer ..... Paul Allan  
Associate Producer ..... Jeff Bellante  
General Manager ..... Gale Edwards  
Company Manager ..... Aaron Kelly  
Publicist ..... Linda Unger  
Assistant to the Producer ..... Keith Llewellyn

## ARTISTIC

Artistic/Casting Director ..... Robin Joy Allan

## PRODUCTION

Production Manager ..... Brian Loesch  
Assistant Production Manager ..... Jose Santiago

## BOX OFFICE

Box Office Manager ..... Laurie Parr  
Director of Group Sales ..... Annmarie Allan  
Group Sales ..... Linda Unger, Claire Ward  
House Manager ..... Joanne Famiglietti  
Box Office Staff ..... Ashley Felicio, Nadine Hazard, James O'Donnell, Brian Strumwasser

## FACILITIES

Facilities Manager ..... Don Harrison  
Concessions Manager ..... Carl DeMasi  
Cleaning Contractor ..... Fiori Enterprises, Inc.  
Grounds Maintenance ..... HTM Landscaping Company  
House Staff ..... Eric Burt, Brendan Dooling, Douglas Gentile, Stephen Ledesky, Chelsea Mojallali, and Lauren Parr  
General Counsel ..... Ann L. Nowak & Associates

**WARNING** - The photographing or sound recording of any performance is strictly prohibited. Gateway Playhouse offers a wireless sound enhancement system for the hearing impaired. Inquire at the box office for more information.

## Attention Advertisers

### Support Local Commerce and Long Island's Premier Professional Musical Theatre!

There is still time to become part of the upcoming Gateway Playhouse Playbill. Shows include *Holiday on Broadway*, *Broadway's Spirit of Christmas*, *Christmas From Dublin*, *Meet Me in St. Louis* and *Cirque Le Masque Carnivale*.



To advertise, contact: Pam Young, Sales Representative  
631.345.2202 • 516.459.1893 • pam@searlesgraphics.com  
**Deadline: December 5, 2007**





**LAST CHANCE TO CATCH OUR FIRST TWO HOLIDAY OFFERINGS...**



In Bellport  
All Seats  
\$16

**Tickets Still Available!**  
**(631) 286-1133**  
**1-888-4TIXNOW**  
1.888.484.9669

Go to  
[www.gatewayplayhouse.com](http://www.gatewayplayhouse.com)  
Or Visit the Box Office



**NOVEMBER 20-24**  
**at the Patchogue Theatre**  
Tickets \$37-\$43 • Children under 12 - \$16

## Give the Gift of Entertainment...

**Gateway Playhouse Gift Certificates**  
**for our 2008 Season are Now on Sale!**  
**Our 2008 Season will include**  
***The Producers, Beauty and the Beast***  
**and other musical blockbusters!**



**(631) 286-1133 • 1-888-4TIXNOW • [www.gatewayplayhouse.com](http://www.gatewayplayhouse.com)**

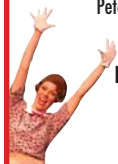
**GATEWAY PLAYHOUSE would like to thank our volunteer staff**  
**for their dedication and support. IT IS MUCH APPRECIATED.**

Marie Rachek - Head Usher

Al Alberg, Missy Atchue, Carmela Aiosa, Olga Belz, Diane Gordova, Betty Entress, Joyce Gambino, Linda Good, Marian Harrison,  
Peter Haustein, Joanne Hittner, Mary Lanier, Connie Merced, Sue Nemet, Peter Pernice, Linda Randolph, Sandy Reifel,  
Allan Ritchie, Charlene Sasto, Terry Seng, Carol Weinstein, Mary Wirth

**IF YOU WOULD LIKE TO JOIN OUR VOLUNTEER STAFF CALL 286-0555**

**Become part of the Gateway Family**  
**and receive complimentary tickets to our shows!**



## HOLIDAY ON BROADWAY!

### A Show for Everyone's Holiday

During this holiday season, different cultures celebrate in their own special way. This show takes you from the sunny Caribbean to the steppes of the North Pole to share with you traditional seasonal music from around the globe. A musical journey featuring some of the most glorious music ever written celebrating all the winter holidays - Christmas, Hanukkah and Kwanzaa. This new show combines inspirational Broadway songs, pop classics and a hilarious "Saturday Night Live" style twist on favorite holiday tunes. The *Los Angeles Times* raved- "Top Notch Performances" and NBC 5 Dallas remarked- "I have never seen more talent than I saw in this extraordinary performance!" The cast, direct from Broadway's *Phantom of the Opera*, *Les Miserables* and more, and a script of great wit and variety, promise an unparalleled evening of entertainment!

**DECEMBER 16th**



**7 p.m. at the**  
**Patchogue Theatre**  
**Tickets: \$39 Adults,**  
**\$16 Children**

## Broadway's SPIRIT OF CHRISTMAS

*"Pure Christmas Joy!"*

### The perfect show for all the family!

The Spirit of Christmas is one of the most delightful and enchanting Festive Season shows ever. Fabulous Christmas songs, a glittering cast, gorgeous costumes and the highest-kicking chorus girls this side of the North Pole will take you to a Winter Wonderland of fun and festive cheer. Join us on a

magical sleigh-ride to enjoy Santa's festive extravaganza, and start Christmas off in grand style! All your favorite Christmas songs: *White Christmas*, *Silent Night*, *Deck the Halls*, *Joy to the World*, *Hark the Herald Angels Sing*, *The First Noel*, and lots more...

**DECEMBER 17th**  
6 p.m.

**DECEMBER 18th**  
2 p.m. & 8 p.m.

**at the Patchogue Theatre**  
**Tickets: \$43 Adults**  
**\$16 Children**



**(631) 286-1133 • 1-888-4TIXNOW • [www.gatewayplayhouse.com](http://www.gatewayplayhouse.com)**



# Christmas From Dublin

## Starring the Three Irish Tenors

Celebrate the holidays with a genuine Irish Christmas! Filled with songs of the season such as "Little Drummer Boy," "Silent Night," "Saviour's Day" and "O Holy Night," *Christmas from Dublin* is full of warmth, charm, and music, direct from the Emerald Isle, that continues to enchant audiences throughout the world. *Christmas from Dublin* features The Three Irish Tenors: the world renowned, **Cieran Nagle, P.J. Hurely and Kenneth O'Regan.**

At the Patchogue Theatre



**DECEMBER 19th • 3 p.m. & 8 p.m. Tickets: \$43 Adults, \$16 Children**



Take your family to a big hearted old-fashioned musical and enjoy the story of Esther Smith, her sisters, her mom and pop, her "boy next door" and her famous trolley ride in a bustling St. Louis at the Turn of the Century; when filling up your dance card was way more lively than adding names to your buddy list. Based on the MGM Judy Garland classic, this production is a ferris wheel of merriment that goes round and round with tune after tune - including the well known *Trolley Song*, *The Boy Next Door*, *Have Yourself a Merry Little Christmas*, *Under the Bamboo Tree*, and of course *Meet Me in St. Louis*. A gem.



**DECEMBER 21-23 at the Patchogue Theatre**

Fri., Dec. 21 .....2pm - \$37 Adults/\$16 Children      Sun., Dec. 23 .....2pm - \$39 Adults/\$16 Children  
Sat., Dec. 22 .....4pm, 8:30pm - \$43 Adults/\$16 Children      Sun., Dec. 23 .....7pm - \$39 Adults/\$16 Children

(631) 286-1133 • 1-888-4TIXNOW • [www.gatewayplayhouse.com](http://www.gatewayplayhouse.com)

# CARNIVALE

Six Performances Only, Including  
Our Special New Year's Eve  
Celebration Show!

## Cirque Le Masque®

Cirque Le Masque has captured audiences worldwide with sold out shows and standing ovations, appearing on NBC live and headlining in Atlantic City, Foxwoods Casino and Las Vegas. Cirque Le Masque's newest – "CARNIVALE" is filled with energy, color, and an original story line. The artistry and skill of the aerialists, contortionists, strong men, gymnasts, and jugglers display quick reflexes, impeccable timing, and human art. With theatrical wizardry and comic audience interaction, Cirque Le Masque has achieved the perfect blend of theater technology and creative entertainment thrilling to behold for audiences of all ages. The future of live theater is here today.

Sat., Dec. 29 .....3pm, 7pm - \$43 Adults/\$16 Children      Mon., Dec. 31 .....7pm - \$45 Adults/\$20 Children  
Sun., Dec. 30 .....12pm, 4pm - \$43 Adults/\$16 Children      Mon., Dec. 31 .....10:30 pm - \$75

## Ring in the New Year with Gateway!

Special 10:30 Show Includes  
**NEW YEAR'S EVE PARTY**  
with hors d'oeuvres, beer and wine, champagne  
toast at midnight. At the Patchogue Theatre

**DECEMBER 29-31**

(631) 286-1133 • 1-888-4TIXNOW • [www.gatewayplayhouse.com](http://www.gatewayplayhouse.com)



American Airlines, American Eagle, AA.com and We know why you fly are marks of American Airlines, Inc. American Eagle is American's regional airline affiliate.



*Paradise isn't lost. We fly there every day.*

We know the way to 35 destinations on 25 unforgettable islands in the Caribbean and The Bahamas. Each and every one a paradise found. No one offers more service from the U.S. than American and American Eagle. Book your next trip online at AA.com or call us at 1-800-433-7300.

**We know why you fly® American Airlines®**  
AA.com

