

HOLIDAY SEASON 2007

PLAYBILL

HOLIDAY ON BROADWAY!

Broadway's
SPIRIT OF CHRISTMAS

Christmas From Dublin
Starring the Three Irish Tenors

Meet Me In St. Louis

CARNIVALE
Cirque Le Masque

Gateway
PLAYHOUSE

GERSHOW



RECYCLING

CONSERVING THE FUTURE BY RECYCLING THE PAST

GERSHOW RECYCLING APPLAUDS THE
GATEWAY PLAYHOUSE FOR ITS CONTINUED
DEDICATION TO BRINGING THE PERFORMING ARTS
TO LONG ISLAND.

AT THE CLOSE OF ANOTHER YEAR WE
GRATEFULLY PAUSE TO WISH OUR EMPLOYEES,
OUR CUSTOMERS, AND OUR FRIENDS A HEALTHY
AND HAPPY HOLIDAY SEASON.

SAM GERSHOWITZ, KEVIN GERSHOWITZ,

ELLIOT GERSHOWITZ, JOE BERTUCCIO, SCOTT BOHAN

Let the performance begin!



Buyers & Processors of Recyclable Metal and Iron

BAYSHORE • BROOKLYN • LINDENHURST • NEW HYDE PARK • MEDFORD

631.289.6188 gershowrecycling.com

Pine Grove Inn

Established In 1910. Famous for almost 100 Years.

Delight in our festive holiday decor

Open Christmas Eve, New Year's Eve & New Year's Day, Closed Christmas Day

Live 3-Piece Band New Year's Eve "Lloyd Roberts" Special New Year's Eve Menu

Make your reservations early! Also available for corporate and holiday parties.



Prime Rib Night Thursdays

\$22⁹⁵ Queen Cut

\$25⁹⁵ King Cut

Choice of Soup or Salad,
Potato and Vegetable

Happy Hour at the Bar

Fri. 4-7 pm

Complimentary Buffet

Live Music

Every Friday and Saturday



1 First Street, East Patchogue • 631-475-9843

Visit www.pinegroveinn.com for the current entertainment schedule

\$5⁰⁰ Gift Certificate
Toward Your Lunch Check

of \$35 or more

With this certificate. Expires January 23, 2008. Reservations suggested.
Not valid with other offers. One voucher per couple. Not valid on holidays.

\$10⁰⁰ Gift Certificate
Toward Your Dinner Check

of \$70 or more

With this certificate. Expires January 23, 2008. Reservations suggested.
Not valid with other offers. One voucher per couple. Not valid on holidays.

The Best Burgers & Wraps You'll Ever Have!



**Monday thru Friday:
Lunch Specials**

11:30-4:00 p.m.

\$8.95

**Wednesday
Pasta Night**

4-10 p.m.

Sonoma Bar Party

All Pint Beer \$3.00

All Martinis \$6.00

All Day! Every Day! Closed Tuesdays



New Year's Eve Gala
Dancing with Pedro and Simone
Champagne Toast & Noisemakers

5745 Sunrise Hwy., Holbrook • 218-3888

Sun Lakes Shopping Ctr. (Stop & Shop) Broadway Ave. Exit off Sunrise Hwy.

Open 6 Days for Lunch & Dinner - Closed Tues.

Visit Our Website: www.sonoma-grill.com

All Our Food Is Homemade & Prepared to Order

WINE & DINE MONDAYS FREE BOTTLE OF WINE

With Purchase Of 2 Entrees. With Coupon. Cannot Be Combined. Dine-In Only.



Restaurant.Cocktails.Events

**COCKTAILS
DINING
DANCING**

Join us at **BLUE**
for **Price Fix**

**\$23/pp - Three Course
Dinner**

Served Daily:*
Monday-Friday 4:00pm-7:00pm
& Sunday 1:00pm-9:00pm

*Not available on Holidays



Private Rooms & Catering Available

What's Happening at BLUE?

Every Friday from 4-7PM:

Long Island's Premiere Happy Hour
Complimentary elegant buffet, All drinks 1/2 price, Live Entertainment
Live Band or DJ from 9:30 to Close

Saturday Nights:

Ladies Night - Ladies Drink Free from 9:30-11PM (only @ the bar)
DJ from 9:30 -Close

The Place to Party for the 30 & Over Crowd!

To make a reservation or to inquire about catering
call: 631-363-6666 • www.restaurantblue.com
7 Montauk Hwy • Blue Point NY 11715

DECEMBER 16th

ETC ENTERTAINMENT COMPANY, INC.

proudly present

THE BEST OF BROADWAY'S HOLIDAY ON BROADWAY!

STARRING

RAYMOND SAAR DIANE KETCHIE

VALERIE PERRI SCOTT HARLAN

Conceived and Directed by Raymond Saar

Playbill Designed and Printed by Searles Graphics, Inc.

HOLIDAY ON BROADWAY!

WHO'S WHO

RAYMOND SAAR has performed on concert stages and in theaters throughout the world. He starred as Raoul in Andrew Lloyd Webber's *Phantom Of The Opera* in San Francisco. He toured with Sammy Cahn in his original musical, *Words And Music*. Mr. Saar played Marius and Enjolras in *Les Miserables* on Broadway, in the Los Angeles production and was one of the featured soloists on the international cast album. He played Lun Thau in the National Tour of *The King And I*, starring Yul Brynner. Mr. Saar worked with Peter Marshall and his singing group, Chapter Five. This included appearances with such notables as Bob Hope, Bob Newhart, Joan Rivers, and a command performance at the White House. His television credits include *General Hospital*, *Good Morning America*, *Jerry Lewis Telethon*, and *The Tonight Show*, starring Johnny Carson. As the founder of ETC Entertainment Company Mr. Saar has produced shows ranging from *A Gershwin Celebration* to *On Broadway!* For more information, please log on to www.etcbox.com.

DIANE KETCHIE made her Broadway debut in *Phantom Of The Opera* and also starred in the San Francisco production of *Phantom* as Carlotta, the opera diva. She made her New York recital debut at *Carnegie Hall* as a result of winning the Artists International annual competition. She has appeared as a guest artist with the *Houston Symphony*, the *Jacksonville Symphony*, the *Milwaukee Symphony*, and the *Long Beach Symphony*. Operatic credits include leading roles with *Lyric Opera Cleveland*, *Opera Delaware*, *Opera*

Carolina, *Skylight Comic Opera* and *Treasure Coast Opera*. Ms. Ketchie is also an accomplished concert pianist who often performs with orchestras as a solo artist. She first performed as both singer and pianist in the premiere of *Orpheus In Love* at the Circle Repertory Theater Off-Broadway. Of her performance, Bernard Holland of *THE NEW YORK TIMES* stated, "I can think of no one in the Broadway, popular or classical world who could do all the things she does and do them so well."

VALERIE PERRI is best known to theater audiences for her award-winning performance in the lead role of Eva Peron in the Tony Award-winning musical *Evita*. Under famed Broadway director Harold Prince's direction, Valerie headed the first national touring production of *Evita* performing the lead role across the United States and Canada. Valerie has performed with symphony orchestras on concert stages at Wolftrap, *Copley Symphony Hall* in San Diego, Frankfurt, Germany's esteemed opera house, and *The London Palladium*.

Wm. J. O'Neill

Sales Exchange Co., Inc.
Jewelers and Collateral Loanbrokers

Classic and
Contemporary



Platinum
and Gold

Jewelry designs that will
excite your senses.

Expert Jewelry Repairs

One East Main St., Patchogue 631.289.9899 www.wmjoneills.com

Mention this ad for 10% discount on purchase





**Hand Crafted Brews
Made on Premises**

LIVE MUSIC

Tuesday - Open Mic w/David James

Wednesday - Live Blues

Thursday - Karaoke

Friday & Saturday - Best LI Bands

Sunday - Open Blues Jam w/Joseph Wales

Friday Happy Hour Specials

Catering For 25-100 People

3 Private Rooms

67 West Main Street • Patchogue • 631-447-BEER
(2337)

Open 7 Days A Week For Lunch & Dinner

10% Off Dinner with Gateway Ticket Stub

Limited to 1 per table, offer expires 1/31/08

HOLIDAY ON BROADWAY!

WHO'S WHO

Ms. Perri also sang in the World Premiere of *Masada* which is now preparing for Broadway. Valerie is also a national recording artist and her compact disc, "*Sweet Conversations*," is available through her website at www.valerieperri.com. Valerie is married to CBS photographer, Cliff Lipson and they have two remarkable 12-year-old twin boys.

SCOTT HARLAN has been seen in LA with Carol Burnett in the world premiere of the new musical, *From the Top* and in the new musical *Radio Gals*. Prior to that, Scott appeared in the national companies of *Do Black Patent Leather Shoes Really Reflect Up?* and *The Rocky Horror Show*. Regionally, Scott created the leading role of Ignatious J.

Reilly in Frank Galati's adaptation of *A Confederacy of Dunces*, was seen in Des McAnuff's production of *80 Days* at the La Jolla Playhouse, appeared as Sancho in *Man of La Mancha* with Jon Cypher, (and John McCook), as Mr. Bumble in *Oliver* with Arte Johnson, Beadle Bamford in *Sweeney Todd* with Amanda McBroom, Marcellus in *The Music Man*, and Tootsie in *I Can Get It For You Wholesale*. Movie roles have included Stan Licata in *Risky Business* opposite Tom Cruise, Ralph Andropwicz in *Power* opposite Richard Gere, and a leading role in the recently released *Creampuff* (best actor nomination-Methodfest). Scott is married to actress Winifred Freedman, and is still her biggest fan.*

Frank R. Egan, DDS, PC
Certified, American Board of Orthodontics



Hospital Road Professional Center
250 Patchogue-Yaphank Road • Suite 14
East Patchogue, NY 11772 • (631) 289-3990

www.TeethOnTheMove.com



Ice Cream Parlor & Coffee Cafe

DRIVE THRU

OPENS @ 7 AM ~ OPEN LATE
BUY ONE GET ONE FREE SMALL CUP OR CONE
(w/coupon)

COFFEE ~ MUFFINS ~ CANDY ~ SMOOTHIES
HOT SOUP ~ GIFT BASKETS ~ PARTIES n MORE

168 MONTAUK HWY • BLUE POINT NY 11715
631-237-4544

JOE

281-0376

SHIRLEY SLEEP SHOPPE

618 Montauk Highway • Shirley, NY 11967



Complete Line of Conventional,
Waterbeds & Futons

Is Your Dryer Vent System Clean & Safe?



**AVOID DRYER FIRES...
BRING YOUR DRYER VENT UP TO CODE**

**DRY
CLOTHES**



**SAFE
HOMES**

631.744.1552

WWW.DRYERVENTWIZARD.COM

∞ DECEMBER 17th & 18th ∞

Broadway's SPIRIT OF CHRISTMAS

*The Grandest Christmas Extravaganza
this side of New York!*

This spectacular Christmas show tap dances and sparkles its way right through Christmas. It has the best Christmas songs, wonderful costumes, amazing singers, the most beautiful high kicking chorus girls and fabulous Christmas scenery to make the miracle of Christmas come true in this high energy, beautifully produced magical Christmas spectacular.

This fabulous Holiday show stars Broadway's very own Santa Claus, joined by Elves, Reindeers and Frosty the Snowman and accompanied by a dazzling cast of singers and dancers. This dynamic Christmas extravaganza radiates so much fun, good cheer and electricity that it could turn on all the Christmas lights in New York!

Broadway's Spirit of Christmas will take you on a fabulous Holiday journey through the best songs and dances of Christmas and Broadway. It features famous hits from Broadway's greatest shows, and the most popular Christmas Songs of all times.

There are fabulous Christmas songs including, *White Christmas*, *Chestnuts Roasting on an open fire*, *Happy Holiday*, *It's the Most Wonderful Time of the Year*, *The Little Drummer Boy*, *Silent Night*, *O Come All Ye Faithful*, *Joy to the World*, *The First Noel*, *I'll Be Home for Christmas*, *I Saw Mommy Kissing Santa Claus*, *Little Drummer Boy*, *Hark the Herald Angels Sing* and many more.





Happy Hour
Tuesday - Friday
12-2 p.m.
& 4-7 p.m.

www.theoar.com



Enjoy The Winter on the Water

Open for Lunch & Dinner Tuesday thru Sunday

Located on the Patchogue River • 264 West Avenue, Patchogue • 654-8266

The Perfect Accent Inc.

For the Spirit of Your Home

Novel Home Decor & Gift Items

Call for Schedule of Live Entertainment and Events
Calling singers, clean comedians, "handmade" crafters



Imported & Hand Painted Items, Stained Glass
Lamps & Panels, Decorative Screens,
Wall Art, Sculptures, Teapots,
Trunks, Christmas Novelties

(631) 399-4125 • 1473 Montauk Hwy, Mastic
1 mile east of William Floyd Pkwy/southeast from LIE and Rte. 27



is the official
landscaper of

Gateway Playhouse

all work done by owner
Nicholas J. Harding

631-475-0636



Broadway's SPIRIT OF CHRISTMAS

LEAD VOCALISTS

Andria Wagner

Gene Yaws

ENSEMBLE

Jamie Body

Victoria Brettle

Kerri-Anne Crocker

Laurel Dean

Frances Elkins

Tomas Gray

Rebecca Jennings

Carla Mayne

Mark Middleton

Joseph Miller

Deborah Paul

Amy Reed

Suzane Sheard

Joanne-Marie Stearne

Charolette Tucker

Shane Whitlam

DANCE CAPTAIN

Victoria Brettle

RONAN TYNAN

Photo by
Walter Petrule,
Patchogue Theatre,
Feb. 17, 2007



ronantynan.net

Patchogue Theatre
Feb. 16, 8:00 PM

On Sale Now for Holiday Giving
www.patchoguetheatre.com

Produced by the Greater Patchogue
Foundation & Bay Shore Hibernians

Swezey

FUEL CO., INC. - EST. 1919

**Suffolk's Largest Family
Owned Oil Company**

- Automatic Oil Delivery Service
- 24-Hour Emergency Service
- Budget Plans That Pay You Interest
- Expert Installation Of Boilers,
Burners, Hot Water Heaters &
Pool Heaters



475-0270

51 RIDER AVE., PATCHOGUE

ROE AGENCY INC.

Insurance Since 1898

Personal Insurance
Commercial Insurance
Property, Casualty
Life
Health
Financial Services

♦ 125 East Main Street ♦
♦ Patchogue, New York 11772 ♦
Phone: 631.475.4000
Fax: 631.475.7648

"Moving Forward in Reverse"

WITH A REVERSE MORTGAGE

- Continue to own your home
- Make no monthly payments
- Tax free income



**HOME
MORTGAGE
SERVICES**

For a personal consultation call me,

Patricia Whitlock
Reverse Mortgage Advisor -

631.758.9200

ext. 228

www.ReverseMortgageChoices.com

REGISTERED MORTGAGE BROKER, NYS, CT, MA, FL BANKING DEPARTMENT.
ALL LOANS ARRANGED THROUGH 3RD PARTY PROVIDERS



DECEMBER 19th

Christmas From Dublin

Starring the Three Irish Tenors

Ciaran Nagle • P.J. Hurley • Kenneth O'Regan



CIARAN NAGLE was born in Dublin in 1970. His first real interest in singing occurred at 10. It was thanks to Fr. Dowling in Willow Park

School who first encouraged him and gave him his first leading role at the age of 12 in a production of *The Gipsy Baron*. From then on singing and music was always his first love. It wasn't until he was 20 that he decided to take it anyway seriously and only at that stage decided to get voice training. He started in the College of Music Dublin in 1990 under the tuition of Edith Forrest FTCL and studied with her for seven years and then with Dr. Veronica Dunne for another two years. During that time he performed many roles including Tamino in *The Magic Flute*, Tom in *The Rakes Progress*, Rodolf in *La Boheme*, *Bepe*, "Rita" for TV and many more.

In 1995 Ciaran became a member of the National Chamber Choir, which is Ireland's only full time professional choir and stayed there until 1998. During that time he also had the experience of performing in Carnegie Hall under the baton of Robert Shaw in productions of Haydn's *Creation and Seasons*. Ciaran also performed with Opera Ireland in productions of *La Cenerentola*, *Faust*, *The Magic Flute*, *La Boheme*, *L'elisir D'amor*, *Eugene Onegin*, *Macbeth*, *Falstaff* and *The Tales of Hoffman*. Ciaran has always enjoyed music theatre and operetta and in that field has performed the roles of Gaylord Ravenal in *Showboat*,

Ralph in *HMS Pinafore*, Cascada in *The Merry Widow* and Tony in *Westside Story*. In 1998 he was given the opportunity to perform with *Riverdance The Show*. Ciaran toured with the show for two years travelling all over Europe and Japan – "The time of my life" – until *The Three Irish Tenors*.



County Clare born tenor **P.J. HURLEY** recently represented Ireland in the 2006 Belvedere International Singing Competition Vienna.

Last year P.J. made his New York debut in Carnegie Hall performing in *A Tribute to Frank Patterson* and his UK operatic debut in the lead role of Rodolfo in Puccini's *La Boheme*. P.J. began his vocal studies with Olive Cowper in Limerick. In The DIT Conservatory of Music and Drama, Dublin he studied with Mary Brennan and is currently training with renowned vocal coach Robert Alderson. P.J. has had much success in vocal competitions winning The Tenor Solo (Feis Maithiu Cork), the O' Mara Cup (Feis Ceoil Dublin), The Thomas Moore Cup and The McDonagh Cup and Bursary (Feis Limerick). P.J. frequently performs with RTE radio and television. In The National Concert Hall he has sung Handel's *Messiah*, Tamino (*The Magic Flute*), Fenton (*Falstaff*), Rodolfo (*La Boheme*), Alfredo (*La Traviata*), The Duke (*Rigoletto*) and the title role in *Don Carlo* as well as singing in tributes to Count John McCormack, Franz Lehr, Sigmund

THOS. CORNELL GALLERIES, LTD.

76 West Main St., Patchogue Village, L.I., New York 11772

NEW YEAR'S DAY "LE GRAND" AUCTION

Tuesday, January 1, 2008 11AM • Exhibition: Sat., Sun. & Mon. 11AM-4PM

FEATURING: 18TH-20TH C. ENGLISH, FRENCH, AMERICA, VICTORIAN & CONTINENTAL FURNITURE • MID-CENTURY MODERN FURNITURE • SEVRES & MEISSEN PORCELAIN • ART GLASS INC. GALLE • SILVER INC. TIFFANY • FINE PAINTINGS & BRONZES • COLLECTION OF JUDAICA • CLOCKS • FINE JEWELRY • ORIENTAL RUGS & MORE!



ESTATE AUCTIONS • ANTIQUE & DESIGN CENTER • APPRAISALS 631-289-9505 www.thoscornellauctions.com

WHO'S WHO

Romberg and Mario Lanza. With Opera Ireland P.J. has sung in productions of *Lady Macbeth of Mtsensk*, *Madam Butterfly*, *Tosca*, *Jenufa*, *Rigoletto* (Borsa) and *La Boheme* (Parpignol) and in Gluck's *Orfeo* which toured to Wiesbaden, Germany. With Anna Livia Opera P.J. has sung in performances of *Faust* and *Il Tabarro*. Recently P.J. sung Mozart's *Coronation Mass* and *Vespers* in Vienna and Mozart's *Requiem Mass* with The Galway Choral Association. P.J. has also performed Schubert's opera *Claudine* and *The Mass in G* in Trinity College Dublin.



KENNETH O'REGAN was born in Cork, the southern most city in Ireland. From a very young age it was evident that music was his passion so it was no surprise to his family and friends when he eventually embarked on a

career in musical theatre. Kenneth has travelled the world with *Riverdance* and is widely regarded as one of the most dynamic vocalists in Irish musical theatre. His list of theatre credits include: "Beadle Bamford" in *Sweeney Todd*, "Freddie Trumper" in *Chess*, "The Scarlet Pimpernel" in *The Scarlet Pimpernel*, "Lt. Joe Cable" in *South Pacific*, "Tony" in *West Side Story*, "Bill Sikes" in *Oliver*, "The King" in *The King and I*, "Lun Tha" in *The King and I*, "Lancelot" in *Camelot*, "Judas" in *Jesus Christ Superstar*, "Billy" in *Carousel*, "Che" in *Evita*, *Riverdance* (World Tour), "Curley" in *Oklahoma* and "Anatoly" in *Chess*. Although musical theatre is where his heart lies, Kenneth regularly performs with his own band throughout Ireland. He is also an accomplished song-writer and is currently writing his own album which he hopes to finish very soon. ❄

TOUR DIRECTION

New York

16 Penn Plaza, Suite 512
New York, NY 10001-1820
212.398.3170 (v)
646.201.9690 (f)

Paris

575 Windwood Lane
Paris, VA 20130-3003
540.592.9573 (v)
540.592.9574 (f)

Website: www.windwoodtheatricals.com

Email: win@windwoodtheatricals.com

South Country Inn

Complimentary glass of wine with your lunch or dinner when you present show tickets or this ad.

Moderately Priced Dinners
Starting at \$13.95

Early Bird Specials Served
Complete - 3:30 - 6 PM
Tuesdays-Thursdays & Sundays

Daily Lunch Specials
Tuesday - Sunday

Fine Italian and Continental Cuisine

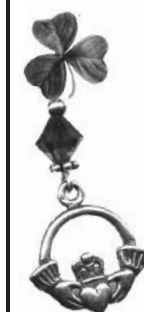
Stop in after the Show for Dessert or Cappuccino - Full Bar Available

A short drive from both theatres on South Country Road.

**Holiday Parties On or Off Premises-
Pick-up Trays for Your Office Party!**

Reservations recommended

668 South Country Rd., East Patchogue **758-1919**



Irish Crossroads Ltd.

*Irish Crystal/China
Handknit Sweaters
Celtic Jewelry
Gift Registries*

Gift Shop



22 East Main Street
Patchogue, NY 11772

631-569-5464

Fax: 631-569-5465

irishcrossroads4@aol.com

Spend \$75.00 and receive a free claddagh pendant
(with ad / expires 12.31.07)

HARBOR CRAB CO.
Patchogue New York

RESTAURANT & MARINA

WWW.HARBORCRAB.COM

**Join Us For
New Year's Eve!**
Special Gourmet Menu

**Join us for a Family Dinner
AFTER THE SHOW!!!**

**Lunch & Dinner 7 Days a Week
Live Music on Weekends**

**"...Food & Beverage to Make
Your Tummy Smile!"**

116 Division Street, Patchogue
(Only 2 minutes from the Theatre)

CALL 687-CRAB (2722)

Cassel
GMC TRUCK SALES

Acadia



GMC
WE ARE PROFESSIONAL GRADE™

550 North Ocean Avenue • Patchogue, NY
3 Miles South of LIE • 1 Block North of Sunrise Hwy.

1-800-758-5811
SALES • PARTS • SERVICE
WWW.CASSELTRUCKS.COM



**MONTI'S
AUTO WORKS**

It's in the Details

Expert Auto Collision Repairs
All Insurance Accepted

1791 Montauk Highway
Bellport, NY 11713

286-2116

Unforgettable moments






PANDORA
Jewelry

ROSE
JEWELERS
CELEBRATING LIFES EVENTS SINCE 1945

Patchogue, 74 E. Main Street (435) 476-1881
Southampton, 87 Main Street (437) 363-6787

Shop
Downtown **Sayville**

Debra Canavan
CLASSICS



*Great Holiday Gifts
& Gift Wrapping*

Gift Certificates

Casual, Career & Cocktail
53 Main Street, Sayville – 631.563.9385

BILL KINNEY GALLERY
OBJECTS OF ART AND CUSTOM FRAMING

- LONG ISLAND PHOTOGRAPHY
- BEACH GLASS JEWELRY
- GLASS SCULPTURE
- OIL AND ACRYLIC PAINTINGS

112 MAIN STREET • SAYVILLE, NY
631-750-9111
WWW.SPADAGRAPHIX.COM

**20% OFF
CUSTOM FRAMING**
With this coupon. Not valid with other offers or prior purchase.
Offer expires 1/15/08

Silica
ARTISAN JEWELRY DESIGNS

**Visit Us For A Unique
Shopping Experience!**

Featuring the Work of Over 50 Artisan Jewelers.

38 South Main St.
SAYVILLE
631.803.6111

COLEMAN
CESSPOOL SERVICE, INC.

475-1733 878-2010

10% Off Complete Cesspool Service With This Ad
Family Owned and Operated For Over 50 Years

- Dedicated to Honest & Reliable Service
- Precast Cesspools Installed
- Portable Toilet Rentals (handicapped accessible available)

1 Chapel Avenue, East Patchogue, New York 11772 www.colemancecesspoolservice.com



Enjoy an old-fashioned shopping experience... Shop Historic Bellport Village this holiday season!


BELLBROOK REALTY, INC.
Each Office Is Independently Owned And Operated.

JOANNE D. TUTHILL
Licensed Real Estate Salesperson/Notary Public


(631) 289-4000 EXT. 21 Business
(631) 289-4006 FAX
(516) 521-3653 Cellular
tuthi4@aol.com www.cbbellbrookrealty.com
440 South Country Road, East Patchogue, NY 11772

PAPA NICKS PIZZA

Gyros
Salads
Heros
Dinners

Daily Lunch
Specials



286-6400
117C-South Country Road, Bellport Village, NY

BELLPORT
JEWELERS & GALLERIES



631-286-7700
WWW.BELLPORTGALLERIES.COM
5 BELLPORT LANE
BELLPORT, NY 11713

Need Cash for the Holidays?
We're paying the highest prices in 25 years for Jewelry-Coins-Currency!
Stop in or we'll come to you!

*Pamela Lerner
&
Kate Carmel*
Antiques



Tel 631-803-2689
147 Main Street,
Bellport NY 11713
e-mail pamelalernerantiques@msn.com

www.pamelalernerantiques.com


Bellport Glass & Mirror

- Call us BEFORE your Insurance company
- INSURANCE DIRECT BILLING
- AUTO GLASS
- CUSTOM MIRRORS
- TABLE TOPS
- INSULATED GLASS
- STORE FRONTS
- RESIDENTIAL GLASS

631.286.1885
150A Main Street, Bellport, NY 11713

Bellport Bakery & Sweets



1 Free Small Coffee with Any Purchase
OR
50¢ off any pastry with purchase of \$5 or more
(Not to be combined with other offers)

128 South Country Rd • Bellport, NY 11713
Ph: 631.456.5457 • Fax: 631.456.5457


PHOENIX FINE ARTS GALLERY

139 South Country Rd. Bellport • 776-0811
www.PhoenixFineArtsGallery.com

FOR THE HOLIDAYS GIVE ART
Paintings, Sculpture, Glass Art,
Pottery and Fine Handcrafted Jewelry.
WE DO CUSTOM PICTURE FRAMING

Merckling Family Chiropractic, P.C.
DR. JOSEPH R. MERCKLING



16-2 Station Road
Bellport, NY 11713
Telephone: (631) 286-2300

Don't Let Pain Interfere With Your Life!
Massage Therapy • Acupuncture
www.bellportfamilychiropractic.com


Marylou Swan Realty Corp.
An Established Tradition of Service

FOR ALL YOUR REAL ESTATE NEEDS
CALL YOUR LOCAL BROKER
SERVING THE AREA FOR OVER 20 YEARS!

www.swanproperties.com
322 South Country Rd.
East Patchogue, NY 11772

- Residential
- Commercial
- Free Market Analysis
- Notary Public




BELLBROOK REALTY, INC.
Each Office Is Independently Owned And Operated.



JANIS PALERMO
Licensed Real Estate Salesperson

(631) 289-4000 Business
(631) 289-4006 FAX
(631) 872-3693 Cellular
www.cbbellbrookrealty.com
440 South Country Road, East Patchogue, NY 11772

Happy Holidays  *Bon Appetite*

THE BELLPORT
Steps away from the Gateway Playhouse
★★★★
New York Times Review

159 South Country Road, Bellport, New York 11713
(631) 286-7550

Sign up today for your FREE Bellport Discount Card! 

Save money by supporting your local businesses!
To receive your card just fill out this form and mail to:
Bellport Chamber of Commerce, PO Box 246 Bellport NY 11713
Check our website www.bellportchamber.com for the latest discounts and offers!

Name: _____
Address: _____
State: _____ Zip: _____
E-mail: _____

Bellport CHOWDER HOUSE

*In The Bellport Hotel
Built 1896*



An Eating and Drinking Tradition

FULL MENU

FULL BAR

Open Daily For Lunch and Dinner
Seven Days A Week

Sunday - Thursday till 11:00 p.m. Friday & Saturday till Midnight

**SPECIALIZING IN FRESH LOCAL SEAFOOD
AT AFFORDABLE PRICES**

STEAKS - CHICKEN - PASTA

*Before and After the Show You'll Want to Meet and Eat At
THE CHOWDER HOUSE*

TAKEOUT

CATERING

19 Bellport Lane • Bellport Village • 286-2343

DECEMBER 21st-23rd



EXECUTIVE PRODUCER

Kyle Desantis

PRODUCER

Gary Griffin

ARTISTIC DIRECTOR

William Osetek

SONGS AND BOOK BY

Hugh Martin & Ralph Blane Hugh Wheeler

Based on "The Kensington Stories" by Sally Benson and
the MGM motion picture "Meet Me In St. Louis."
Songs by Martin & Blane published by EMI Feist Catalog, Inc.
Produced for the Broadway stage by Brickhill-Burke Productions,
Christopher Seabrooke and EPI Products.

CHOREOGRAPHYTammy Mader
MUSIC DIRECTORMargaret James
SCENIC DESIGNERBrian Sidney Bembridge
LIGHTING DESIGNERJesse Klug
COSTUME DESIGNERTatjana Radisic
PROPSD.J. Reed
PRODUCTION STAGE MANAGERThomas Joyce
STAGE MANAGERDominick Ruggiero

DIRECTED BY

Jim Corti

Meet Me In St. Louis is presented by arrangement with Tams-Witmark Music Library, Inc.,
560 Lexington Avenue, New York, New York 10022.

CAST OF CHARACTERS

John Truitt	Justin Berkobien
Mr. Neely	Scott Calcagno*
Warren Sheffield	Brandon Dahlquist*
Mr. Alonso Smith	James Rank*
Mrs. Anna Smith	Cory Goodrich*
Agnes Smith	Rae Gray
Katie O'Rourke	Carol Kuykendall
Lucille Ballard	Nicole Hren*
Rose Smith	Jill Kelly
Grandpa Prophater	Michael Ehlers*
Tootie Smith	Kamilah Lay
Esther Smith	Jessie Mueller*
Lon Smith	Kevin Barthel*
Ensemble	Natalie Berg*, Scott Calcagno*, John Chambers*, Kira Durbin*, Laura Gaona*, Nicole Hren*, Sean Michael Hunt*, Jarrah Korba, Stephen Stockley*, Erin Thompson



*denotes members of Actors' Equity Association, the union of professional actors and stage managers.

How do you spell great banking?



The Smart Package

- ▶ **Interest Checking** Free with Direct Deposit
- ▶ Premium **Money Market** Savings Account with no monthly maintenance fees
- ▶ **And more...**

Ask an HSBC representative how to open up a Smart Package today!

Bellport Office
20 Station Road
Bellport, NY 11713
631-286-3800

Patchogue Office
325 E. Main St.
Patchogue, NY 11772
631-475-2600

Mastic Office
1718 Montauk Highway, Mastic, NY 11950 • 631-281-6400

HSBC
The world's local bank

us.hsbc.com 1-800-975-HSBC

Issued by HSBC Bank USA ©HSBC Bank USA 2006

ASSOCIATE PRIME MEAT MARKET



*Holiday Catering,
Corporate Parties &
Private Tableside Parties*

TOO TIRED TO COOK?

Let us do the work for you.

FULL MENU AVAILABLE ONLINE



Experienced
Butchers & Caterers
for Over 20 Years

Also providing groceries,
dairy & produce

109 Maple Ave. Patchogue
631-475-1749

www.associatemarketli.com

SCENES AND MUSICAL NUMBERS

SETTING

In and around the Smith family home 5135 Kensington Ave., St. Louis.
From the summer of 1903 to the spring of 1904 and the opening of
The Louisiana Purchase Exposition.

ACT ONE

Meet Me In St. Louis	The Smith Family Octet
The Boy Next Door	Esther
You'll Hear A Bell	Mrs. Smith
A Raving Beauty	Warren and Rose
Skip to My Lou	Lon, Esther, Rose and Ensemble
Under the Bamboo Tree	Tootie, Agnes and Esther
Over The Bannister	John
The Trolley Song	Esther and Ensemble

ACT TWO

A Touch of the Irish	Katie with Esther and Rose
A Day in New York	Mr. Smith and Family
Reprise: You'll Hear A Bell	Mrs. Smith
Wasn't It Fun?	Mr. and Mrs. Smith
The Banjo	Lon and Ensemble
You Are For Loving	John and Esther
Have Yourself A Merry Little Christmas	Esther
Reprise: The Trolley Song	The Ensemble
Reprise: Meet Me In St. Louis	Full Company

MUSICIANS

Piano & Conductor	Margaret James
Reeds	Bob Dalpiaz
Violin	Marni Harris
Percussion	Rich Trelease
Musical Arrangements	Adam DeGroot

The use of any recording device, either audio or video, and the taking of photographs, either with or without flash, is strictly prohibited. Please turn off your cell phones and pagers prior to the beginning of the performance.

DIRECTOR'S NOTES

In 1903, the construction of The Louisiana Purchase Exposition sprung up on the horizon. Anticipation of the entire world coming to St. Louis was as palpable as if you could breathe it in the air, taste it in your first bite of a hot dog, lick of an ice cream cone or sip of iced tea. Hundreds of feet in the air you could see ferris wheel cars the size of trolleys. "The Ivory City," sculpted of plaster palaces exhibiting technical feats of art and science, began to tower on the city's western edge for over a thousand acres. This was a time of pride and patriotism commemorating the 1803 acquisition of all the land lying between the Mississippi River and the crest of The Rocky Mountains, more than doubling the size of a young United States. This was a time of firsts that was met with a peerless energy and joy making it seem as if nothing ever could or should remain as it used to be. A long distance phone call could signal heart pounding change in any home as when one is expected by the Smith family on Kensington Avenue. Progress gently pulls at the lives of Alonso and Anna and their five children as it nearly uproots them from little Tootie's favorite city. Each heart rebounds richer and warmer and more embraceable than it ever was. This is a human, real life story of a family's love and of young Esther's romance caught in the midst of the giddy, topsy-turvy turn of the century wonder that was the 1904 St. Louis World's Fair. Sit back. Lean forward. Enjoy.

– Jim Corti

KEVIN BARTHEL (Lon Smith) Past productions include *Seven Brides...* (Gideon), *Oklahoma!* (Will Parker), *Dames at Sea* (Dick), *Shenandoah* (Henry), *The Music Man*, and *Once Upon a Mattress*. Other Chicagoland productions include, *Pageant: The Musical* (Miss Deep South) *The Black Orchid*; *State Fair* (Bearded Lady/Fairtone), *Do Black Patent Leather Shoes...* (Felix Lindor) Marriott Theatre; *A Day in Hollywood...* (Constantine), *Meet Me in St. Louis* (Warren Sheffield), *Singing in the Rain* (Production Tenor) Theatre at the Center. Thanks always to his friends and family for traveling to see him do what he loves.

JUSTIN BERKOBIE (John Truitt) Is happy to make his Gateway debut with the Drury Lane cast of *Meet Me in St. Louis*. Justin and gorgeous actress/wife, Julie, are entering year two of residency in Uptown Chicago where Justin was first

seen in Quest Ensemble's *The Drunkard*. Other Chicagoland credits include Jim in *Pump Boys and Dinettes* (Steel Beam), and Jefferson in *1776* (American Eagle). Born, raised, and educated in Saginaw, Michigan, favorites from home include title roles in *Tommy*, *Man of La Mancha*, and *The Elephant Man*. There, he also penned the original drama, *American Son*, which earned him honors at the Kennedy Center's 2004 American College Theatre Festival in Washington D.C. The play is tentatively scheduled for a Spring '08 Chicago premier and is currently being adapted for the screen.

NATALIE BERG a proud member of Actors' Equity is happy to be making her Long Island Theatre debut! Natalie has been seen throughout the United States and Canada in all four productions of the Classical Kids' Symphony Concert Series:

Beethoven Lives Upstairs; *Mozart's Magnificent Voyage*; *Tchaikovsky Discovers America* and *Vivaldi*. She also had the pleasure of performing in Kuala Lumpur with the Malaysian Philharmonic. She recently starred in the critically acclaimed Chicago production of *Ruthless* and in the Chicago premier of *Bingo!* Natalie made her professional debut in *Les Miserables* as Young Cosette at the age of 10. Other favorite shows include: *A Christmas Carol*, *Charlotte's Web*, *Pinocchio*, *Annie Get Your Gun*, *The Man Who Came to Dinner*, *Little Shop of Horrors*, *Hair*, *The Sound of Music*, and *Annie Warbucks*. She thanks God for family, friends, and Julius Meinl Coffee!

SCOTT CALCAGNO (Ensemble) is happy to make her Gateway debut with the Drury Lane cast of *Meet Me in St. Louis*. Credits include: *The Producers* (Marks): Marriott Lincolnshire, *Scrooge* (Future): Nat'l Tour w/Richard Chamberlain, *The Visit*: Goodman Theater w/Chita Rivera, *Ragtime* (Fireman): First Nat'l Tour, *Ragtime* (Tateh): Nat'l Tour, *Shear Madness* (Tony): Kennedy Center, *Into the Woods* (Baker): Nat'l Tour, *Hot Mikado* (Pooh-Bah): Martinique Theater, Chicago, *Man of La Mancha* (Padre): Drury Lane, *Drood* (Neville): Apple Tree Theater, Chicago. Scott is a proud member of Actor's Equity and thanks you for your support of live theater!

JOHN CHAMBERS (Ensemble) happily joins the cast of *Meet Me in St. Louis* for the holidays, having just completed a run of *A Christmas Carol* at Drury Lane Theatre in Chicago. Other Drury Lane credits include *My Fair Lady*, *Evita*, *Carousel*, *Brigadoon*, and *Follies*. He has appeared regionally in productions

with Theatre at the Center, Shakespeare on the Green, Light Opera Works, Court Theatre, Circle Theatre, and Beef & Boards.

BRANDON DAHLQUIST (Warren Sheffield) Is happy to make his Gateway debut with the Drury Lane cast of *Meet Me in St. Louis*. Favorite credits include *Assassins* and *The Teapot Scandals* (Porchlight Music Theatre), *A Funny Thing...Forum* and *Vikings!* (Noble Fool Theatricals), *King of Coons* (Congo Square) and with Bohemian Theatre Ensemble, *The Life*, *The Wild Party* and *Side Show* (Jeff Citation-Best Musical). In February, Brandon will appear in Next Theatre's production of *The American Dream Songbook*. Brandon sends love to his wonderful, supportive parents and his best friend and partner, Erin. Finally, many thanks to Jim, Margaret, Bill at Drury Lane in Chicago for this great opportunity and to you for supporting live theatre.

KIRA DURBIN (Ensemble) Kira's first show was *Grease* (Patty Simcox) in 2000, and most recently she worked as the assistant to the children in the *King & I*. She graduated with a B.A. in Theatre from Columbia College Chicago, and is now a proud member of Actor's Equity Association, where she also sometimes works. Other regional theatres include *Clock Tower*, *AlphaBet Soup*, *Pheasant Run*, and *the Metropolis*. Kira continues to study dance in its many forms at the Lou Conte Studios. She loves the Yankees and hates cold weather. Special thanks to the PTB, Jim, Tom, and to YOU, the audience member, for supporting live theater! This one's for Chi Chi— we love you and miss you.

MICHAEL EHLERS (*Grandpa Prophater*) is happy to make his Gateway debut with the Drury Lane cast of *Meet Me in St. Louis*. Has appeared as Al Jolson in *Jolson and Company*, *Samovar the Lawyer / Groucho Marx* in *A Day in Hollywood A Night in the Ukraine* at Theatre at the Center, the Emcee in *Cabaret* at Metropolis Performing Arts Centre, Don Lockwood in *Singin' In the Rain* at Drury Lane Oakbrook, Al in *A Chorus Line* at Drury Lane Evergreen Park as well as several productions at Marriott Lincolnshire Theatre. Michael has performed the roles of Munkustrap and Rum Tum Tugger in *Cats* on Broadway as well as National and Canadian tours. Other Tours include *Scrooge* (starring Richard Chamberlain), *Joseph and the Amazing Technicolor Dreamcoat* (starring Donny Osmond), *Chess* and *Evita*.

LAURA GAONA (*Ensemble*) is happy to make her Gateway debut with the Drury Lane cast of *Meet Me in St. Louis*. Drury Lane credits: *The King and I* (Eliza), *Brigadoon* (Maggie), *A Christmas Carol* (Tiny Tim), and *West Side Story*. Other credits include a tour of *West Side Story* (National and Switzerland), and various shows at North Shore, The Goodman Theatre, Marriott Lincolnshire, The MUNY, Kansas City Starlight, and Theater at the Center. TV/Film credits include *Shy of Serenity*, *In the Shade*, and *Guiding Light*.

CORY GOODRICH (*Mrs. Anna Smith*) is happy to make her Gateway debut with the Drury Lane cast of *Meet Me in St. Louis*. shows include: *My Fair Lady* (Eliza), *Brigadoon* (Fiona), *Carousel* (Julie), *1776* (Martha), *Anything Goes* (Hope) *Shenandoah* (Jenny) (Jeff nomination), *Oklahoma!* (Laurey) and Maria in *Sound of*

Music. Other Chicago credits include: *Hello, Dolly!* (Mrs. Malloy), *Oklahoma!* (Laurey) and Lucy in the Midwest premiere of *The Thing About Men* at Theatre at the Center, *The Last Five Years* at Illinois Theatre Center, Bark, *The Musical* (Chanel), *Do Black Patent Leather Shoes Really Reflect Up?* (Becky), *Beef and Boards*, (Peg/Brigadoon) (Jeff nomination) at Candlelight, *Evita* (Eva) at the Barn Theatre and *Nurse/Sunday in the Park* with George at Chicago Shakespeare as well as *Once Upon a Time In New Jersey*, *Houdini* and *Evita* at the Marriott. She has been a soloist at Ravinia, and hobnobbed with George Hearn, Patti Lupone and Audra McDonald in *Sweeney Todd*, *A Little Night Music*, *Passion* and this year's *The Most Happy Fella*. Her award winning children's CDs, *Hush* and *Wiggly Toes* are available on Amazon.com. For more info, visit coryshouse.com, or corygoodrich.com.

RAE GRAY (*Agnes Smith*) is happy to make her Gateway debut with the Drury Lane cast of *Meet Me in St. Louis*. Rae most recently appeared in *Inherit the Wind* at Northlight Theater in Chicago. Other previous credits include *Oliver* and *State Fair* at Lincolnshire Marriott; Ravinia Festival's *Sunday in the Park with George*; *Steppenwolf's Wedding Band*; *Goodman's A Christmas Carol* (2 seasons); Apple Tree Theater's *Number the Stars* and *Timeline Theater's Cry of Players* and *Crucible* (Jeff Citation Best Production/ Ensemble). In her spare time, Rae loves to play softball on the varsity Team at the Latin School of Chicago where she is currently a sophomore.

LAURA GAONA (*Ensemble*) is happy to make her Gateway debut with the Drury Lane cast of *Meet Me in St. Louis*. Drury Lane credits: *The King and I* (Eliza),

Brigadoon (Maggie), *A Christmas Carol* (Tiny Tim), and *West Side Story*. Other credits include a tour of *West Side Story* (National and Switzerland), and various shows at North Shore, The Goodman Theatre, Marriott Lincolnshire, The MUNY, Kansas City Starlight, and Theater at the Center. TV/Film credits include *Shy of Serenity*, *In the Shade*, and *Guiding Light*.

NICOLE HREN (*Lucille Ballard*) is happy to make her Gateway debut with the Drury Lane cast of *Meet Me in St. Louis*. Previous credits include *Superman*, *Fiddler on the Roof* (Chava), *Camelot*, and *Kiss Me Kate*. Other credits: *Radio City Christmas Spectacular*, *The King and I*, *Seven Brides for Seven Brothers* (Alice) at MUNY Theater, St. Louis. *Beauty and the Beast*, *Swing!*, Marriott Theatre, *Chicago* (Annie) at Pheasant Run, *Singin' in the Rain* at CPA, *The Odyssey*, *Babes in Toyland*, *Diary of Anne Frank* at Moraine Valley. Nicole is a graduate of the University of Illinois, and is a proud member of Actor's Equity. Special thanks to Jim, Bill and the production staff as well as family, friends, and the fan club. Love to hubby, Gideon, for traveling far and wide to make sure I always had a merry little Christmas.

SEAN MICHAEL HUNT (*Ensemble*) Credits include: *It's a Bird, It's a Plane, It's Superman!*, *Grease*, *The Wizard of Oz*, *Joseph and the Amazing Technicolor Dreamcoat*, *Oklahoma!*, *Gypsy*, *Singin' in the Rain*, *West Side Story*, *Guys and Dolls*, and *Big River*. Sean is from Utah and holds a B.A. in Musical Theatre from Weber State University. He would like to thank Actors' Equity, and of course his wonderful family and friends for their endless support and encouragement.

JILL KELLY (*Rose Smith*) is happy to make her Gateway debut with the Drury Lane cast of *Meet Me in St. Louis*. A native of Ossian, IN, she has her B.F.A. in Acting from Wright State University in Dayton, OH. Last year, Jill performed in *Oliver*, *South Pacific* and *A Christmas Carol* at Beef & Boards Dinner Theatre in Indianapolis, IN. Some of her favorite past roles include Velma in *Chicago*, Maria in *The Sound of Music* and Catherine in *Proof*. All her love and thanks to her best friend, Jeff.

JARRAH KORBA (*Ensemble*) She recently appeared as Julia Middleton in *The Drunkard* (Quest Theatre). Her favorite roles include: Fan/Elizabeth Cratchit- *A Christmas Carol* (Metropolis), Amaryllis- *The Music Man* (St. James Theatre), and Helen Keller- *The Miracle Worker* (Theatre-Hikes and ArtCraft Theatre). Jarrah recently completed her fifth independent film, and was on TV in the History Channel's *Violent Earth: New England's Killer Hurricane*. Jarrah is a competitive gymnast (Elk Grove Gymnastics), studies acting (Piven Theatre Workshop), takes vocal lessons with Wendy Morgan (Music Institute Chicago) and tap with Laverne Lehman. Many thanks to Drury Lane, Jim Corti, and Mom.

CAROL KUYKENDALL (*Katie O'Rourke*) Chicago credits include: Mrs. Gibbs in *Our Town* at Writers Theatre; Mistress Ford in *The Merry Wives Of Windsor* and Yvonne/Naomi in *Sunday In The Park With George* at Chicago Shakespeare Theatre; *A Christmas Carol* and *The Visit* at the Goodman Theatre; Lady Thiang in *The King and I*, Cinderella's Step-mother in *Into the Woods*, Mrs. Sourberry in *Oliver*, Tessie in *Gypsy*, *Pirates Of Penzance* and

Mame at the Marriott Theatre; Mrs. Baskin in *Big: The Musical* at The Apple Tree Theatre; Grushinskaya in *Grand Hotel*, Aunt Alicia in *GIGI*, Melissa in *State Fair*, *Do I Hear A Waltz*, and Annie in *Proposals* at the Theatre at the Center; *Singin' In the Rain*, *Camelot*, *Hunchback* and *Phantom* at Drury Lane Oakbrook. Regional credits include: Stella in *A Streetcar Named Desire* and the 3rd actress in *The Dining Room* at the Arizona Theatre Company; Fastrada in *Pippin* at the Utah Shakespearean Festival; Emma Lockwood in *Panic* at the Riverpark Center Theatre; Dottie and Ellie in *Showboat* in Chicago and on the National Tour. Carol is married to actor Joel Hatch.

KAMILAH LAY (Tootie Smith) is happy to make her Gateway debut with the Drury Lane cast of *Meet Me in St. Louis*. Kamilah has performed at The Fireside Dinner Theatre (Chicago) in *Disney's Beauty and The Beast* (Chip), *The Music Man* (Amaryllis), *Hollywood Sings* (Shirley Temple), and *Fiddler on the Roof* (Bielke). Other professional appearances include First Stage Children's Theatre, M & W Productions, Acacia Theatre, and Ravinia Festival Pavilion. Doing voiceover work as well as film projects brings Kamilah joy. She plays herself in the multi-award winning public TV educational series *Into the Book*. She can be seen as a principal (Petra) in an independent short entitled *Peter The Cleric*. Kamilah is active in community service and swimming. She's also passionate about studying science and mountain biking with her family. Violin studies began for Kamilah at three-and-a-half. She has received recognition as a competitive soloist. Whatever activity she's

engaged in, Kamilah can be found singing almost incessantly. She is fortunate to have won accolades for her vocals. Like her contemporaries, Kamilah dreams of portraying leads in *Annie* and *Oliver* someday.

JESSIE MUELLER (Esther Smith) is happy to make her Gateway debut with the Drury Lane cast of *Meet Me in St. Louis*. Credits include *Once Upon A Mattress*, *Shenandoah* (Jenny) at the Marriott Lincolnshire (Chicago), several productions at the Chicago Shakespeare Theatre, including originating the role of Daisy in *How Can you Run With a Shell on Your Back?*, *The Three Musketeers* (Cecile) and *Henry IV Parts 1 & 2* (Lady Mortimer), also on tour at the RSC in Stratford-Upon-Avon. She was also seen in *Baby* (Lizzie) at Theatre at the Center and regionally as Mary Jane Wilkes in *Big River* at Syracuse Stage. Thanks to God and her wonderful family and friends. Jessie is a proud member of Actor's Equity and a graduate of Syracuse University. Happy Holidays!

JAMES RANK (Mr. Alonso Smith) is happy to make his Gateway debut with the Drury Lane cast of *Meet Me in St. Louis*, has had an active career in musical theater, opera and concert venues. Credits include: *Grand Hotel* at Drury Lane Water Tower (The Baron), for which he received a 2006 Jeff nomination as Best Actor in a Principal Role; *A Little Night Music and Passion* at Chicago Shakespeare Theater (Mr. Lindquist, Lt. Torasso); *She Loves Me and Baby* at Theater at the Center (Kodaly, Nick); *Carousel* and *Phantom* at the Candlelight Theater (Billy Bigelow, The Phantom); *South Pacific* and *It's a Bird, It's a Plane...It's Superman* at Drury Lane Oakbrook (Joe Cable, Superman);

Candide, *The Fantasticks* and *110 in the Shade* with Light Opera Works (Voltaire/Pangloss, El Gallo, File). *The Face on the Barroom Floor* (Chicago Opera Theater); *La Bohème* (L'Opera Piccola); *Boris Gudonov* and *Götterdämmerung* (Lyric Opera of Chicago). He has also appeared in *The Beggar's Opera* (Santa Fe Opera); *The Pirates of Penzance*, *The Mikado* at Central City Opera (The Pirate King, Pish-Tush); *Carmen*, *L'Italiana in Algeri*, *Hansel and Gretel* and *La Traviata* (Pamiro Opera).

STEPHEN STOCKLEY (Ensemble) is happy to be joining this wonderful cast and show in New York. A proud member of Actors' Equity for over 20 years, Stephen began his professional career at the Burt Reynolds Dinner Theatre performing with Charles Nelson Reilly and Alice Ghostly in *Bye Bye Birdie*. He now calls Chicago home and has had the good fortune to have been a part of a number of memorable productions in this great city. Chicago credits include *Singin' In The Rain* (Don Lockwood, TATC), *A Chorus Line* (Bobby, Don, Drury Lane South/TATC), *West Side Story* (Bernardo, TATC), *Dames At Sea* (Dick, Dreamstreet), *The Wizard of Oz* (Tinman, Marriott Lincolnshire,) and *Pageant: The Musical* (Miss Texas, Black Orchid). Other favorite shows include *Evita* (Marriott Lincolnshire), *My One and Only* (Drury Lane Oakbrook), *Diva Diaries* (Lakeshore, Young Damsel, Clareen and Randee) and *Hot Mikado* (Drury Lane South). Stephen also works extensively as a live narrator/presenter for National Trade Shows as well as in commercials and industrial films. Much love to his family and friends and Happy Holidays to all!

ERIN THOMPSON (Ensemble, Dance Captain) Regional credits include *It's a Bird...it's Superman* and *King and I* (Drury Lane Oakbrook), *Grand Hotel* (Drury Lane Watertown), *Brigadoon* and *Wizard of Oz* (Marriott Theater Lincolnshire), *...Forum* (Noble Fool), *Cripple of Inishmaan* (Western Stage), *Chicago* and *Peter Pan* (New Bedford Festival Theater), *1940s Radio Hour* (Masquers Playhouse). Erin also teaches yoga at Chicago Center for Body Movement. Big love and thanks to her parents and to her wonderful partner-Brandon. This one's for you Gram!

JIM CORTI (Director) Directed and choreographed *The Full Monty*, the inaugural production at The Drury Lane Theater Water Tower Place in Chicago and was nominated for Outstanding Choreography. At Oakbrook Terrace in Chicago he helmed *Bye Bye Birdie*, *Damn Yankees*, and choreographed *Grease*, *Company* and *Singin' in the Rain* which garnered the Jeff Award for choreography. He has appeared in *Dames At Sea*, *Sophisticated Ladies*, *Guys and Dolls* and *Bob Fosse's Dancin'*. He was awarded a Jeff for Outstanding Direction for Blues in the *Night at Northlight* where he also designed dances for *City on the Make*, Jeff Berkson and John Karraker's musical adaptation of Nelson Algren stories. Other Chicago directing credits include *Santa Anita '42*, *The Robber Bridegroom* (Illinois Theater Center), *The Little Shop Of Horrors* (Westin Hotel, Rose Theater) *On A Slow Boat To China* (National Jewish Theatre) and more recently, *God and Country*, Doug Post's musical of the Antigone myth which premiered at Victory Gardens and where he earlier directed *Your Move* with Dennis Zacek and *Symphony*

Pastorale/Fugue at The VG Studio. At The Cleveland Play House he directed and choreographed *A Day In Hollywood/A Night In The Ukraine*, *The Canterbury Tales* and *A...My Name Is Alice* and The Westchester Broadway Theater's *Singin' In The Rain* in upstate New York. Mr. Corti's Broadway credits include, *Ragtime*, *A Chorus Line*, *Candide*, musical staging for Steppenwolf's *The Rise And Fall Of Little Voice* and the national tours of *Cabaret*, *Bob Fosse's Dancin'*, and *Urinetown*.

TAMMY MADER (Choreographer) Tammy has choreographed *Superman*, *Kiss Me Kate* (Jeff Nomination), *Anything Goes* (Jeff Nomination), *My One and Only* (Jeff Award), and *Of Thee I Sing*. Other choreographic credits include *Assassins* (Porchlight Theatre), *Grand Hotel* and *The Full Monty* (assistant director/choreographer) for Drury Lane Water Tower Place; *Guys and Dolls* for Court Theatre; *Beauty and The Beast*, and *Treasure Island* for Marriott's Lincolnshire Theatre; *Do Black Patent Leather Shoes Really Reflect Up?* for Drury Lane Theater in Evergreen Park; *She Loves Me*, *Singin' In The Rain* (Jeff Nomination), *Grand Hotel*, *42nd St.*, *Pump Boys And Dinettes*, *Meet Me In St. Louis*, and *Swingin' On A Star: The Johnny Burke Musical* for Theater at the Center in Munster Indiana. Tammy appreciates your support of live theater and encourages you to enrich the lives of the young people you know by introducing them to the Arts.

MARGARET JAMES (Musical Director) Music Director credits include *Superman*, *The King & I* (After Dark Award), *Pirates of Penzance* (Jeff nomination), *Kiss Me Kate*, *Tintypes*, *Fiddler on the Roof* (Jeff nomina-

tion), *Lucky Stiff*, *Evita*, *Grease*, *The Music Man* (After Dark Award), *My One and Only*, *How to Succeed in Business Without Really Trying*, *Carousel*, and *Anything Goes* (among others). At Drury Lane Evergreen Park (Chicago) she musical directed *Sophisticated Ladies*, *Nunsense*, *A Chorus Line* (After Dark Award), *Hello, Dolly*, *Do Black Patent Leather Shoes Really Reflect Up?*, *Hot Mikado*, *Jerry's Girls*, *Grand Night for Singing*, *Wizard of Oz*, *West Side Story*, and *Some Enchanted Evening* (among others). At Peninsula Players she musical directed *Dames at Sea* and *The Taffetas*; at Theatre at the Center: *Bells Are Ringing*, *Finian's Rainbow*, *Sound of Music*, *Joseph and the Amazing Technicolor Dreamcoat*, *Baby*, *Sweet Charity*, *Man of LaMancha*, and *My Fair Lady* (among others). At The Goodman: *Hey, Stay Awhile*; The Theatre Building: *RapMaster Ronnie* (Jeff Nomination); The Ivanhoe: *Fear of Filing*; *Bailiwick: A Christmas Schooner* (2nd year); Mule Barn Theatre: *Godspell*, *Brigadoon*, *Best Little Whorehouse in Texas*; Royal George: *Disguised as a Grown-up*, *Body Parts*. Film credits include teaching Bill Murray to play the piano for his role in *Groundhog Day*.

BRIAN SIDNEY BEMBRIDGE (Scenic Designer) Brian has designed sets and/or lights for for *Ten Little Indians* (Jeff Nomination), *Forever Plaid*, *The Full Monty*, *Grand Hotel*, and *School House Rock LIVE*. Off Broadway: *Kids With Guns* Theatre Company, The Jean Cocteau Repertory Theatre, Theatre at St. Clements. National Tours: Chicago Shakespeare. Chicago: Goodman Theatre, Steppenwolf Theatre, Chicago Shakespeare Theater, The Second City, Lookingglass Theatre

Company (Production Affiliate), Court Theatre, Chicago Theater, Writers' Theatre, Ravinia Music Festival, Timeline Theatre Company (Artistic Associate), Teatro Vista (Artistic Associate), UMA Productions (Artistic Associate), About Face Theater Company, Luna Negra Dance Theatre, Chicago Civic Ballet, Next Theater, Famous Door Theater Company, The Gift Theatre, Naked Eye Theatre Company, Bailiwick Repertory, Noble Fool Theatricals, Live Bait Theater, among others. Regional: Virginia Opera, Opera Omaha, The Arden Theatre, The Second City Toronto, Milwaukee Repertory, Circle X Theatre Company, Theatre Alliance, The Power House Theater, Golden Mean Productions, among others. Awards: Brian has been honored with 4 Joseph Jefferson Awards/Citations, 5 After Dark Awards including Outstanding Season, 2 LA Drama Critic Circle Awards, 2 Garland Awards and an LA Weekly Award. Brian was named one of the top nine emerging designers in North America, *Entertainment Design* magazine. Film Production Design: *Wallace Shawn's Marie and Bruce*, *Holding Out*, *Manfast*, *Stray Dogs*, *Late for Church*. He also designed sets for *Muppets From Space*. Brian holds a BFA from North Carolina School of the Arts, School of Design and Production.

JESSE KLUG (Lighting Design) Past credits include: *It's a Bird it's a Plane it's Superman*, *Christmas Carol* and *Forever Plaid*. New York credits include: *Romulus* (American Opera Productions). Chicago credits include: *Wizard of Oz*, *Beauty and the Beast*, *Alice in Wonderland*, *Cinderella*, *Pinocchio*, *Treasure Island*, *You're a Good Man Charlie Brown* (Marriott Lincolnshire), *How Can You Run with a Shell on Your Back* (Chicago Shakespeare), *I Do! I Do!*, *Oklahoma!* (American Theatre Company), *Elliott* (Teatro Vista at Steppenwolf), *Blind Mouth Singing*, *Another Part of the House* (Teatro Vista). *Mid Life The Crisis Musical*, *A Funny Thing Happened on the way to the Forum* (Noble Fool), *Assassins* (Porchlight Theatre), *Three Sisters*, *After Dark Award* (Strawdog Theatre), *Big Blue Nail*, *Hortensia and the Museum of Dreams* (Victory Gardens), *Faith Healer* (Uma Productions), *Feast* (Chicago Dramatist), and *Children's Hour* (Timeline Theatre Company). He is the resident Lighting Designer for Chicago Tap Theatre. He would like to thank Sara for her love and support.*

Swan Bakery

All Occasion Cakes

Guy Gagliano

The Official Bakery of Gateway Playhouse

15 South Country Rd., East Patchogue, NY 11772
(631) 475-9626

DECEMBER 29th-31st

Carnivale

Cirque Le Masque

PERFORMERS

ANNE GRENDEAU	IRINA BURDESKY
ALEX GRENDEAU	MARIO DIAMOND
KRIS OLNES	DANNY D'OSCAR
MICHELLE DORTIGNAC	AMAURY SANABRIA
JANINA REINER	YEVGEN VILKOVSKIY
HILARY SWEENEY	JESSIE IRWIN
VITALIY PRIKHODKO	JEFFREY STATON
ALEXEI ANIKINE	CRYSTAL DANZER
ROBERTO LAURANO	LAURA HALEY
MAX LAURINO-MARIA	GINA DEFREITAS
RIQUELME	DANIELLE CALCAGNO
MIA CARESS	

STAGE MANAGER

Mia Caress

ASST MANAGER

Jessie Irwin

RIGGER

Jeff Staton

PRODUCED AND DIRECTED BY

Dennis and Bernie Schussel

ACT 1

Scene 1	MIME/WITH SUITCASE-TOURIST
Scene 2	ENTRANCE PARADE
Scene 3	TRIPLE AERIAL ROPE
Scene 4	CHAIR BALANCE
Scene 5	DUO TRAPEZE
Scene 6	HULA HOOPS-IRINA
Scene 7	COMIC
Scene 8	FLYING STRAPS

INTERMISSION

ACT 2

Scene 9	SILK
Scene 10	RISLEY ACT
Scene 11	VERTICAL ROPE
Scene 12	CUBE JUGGLER
Scene 13	BUTTERFLY FLYING SILK
Scene 14	HAMMOCK/HAND TO HAND BALANCE followed by the finale

Background of Cirque Le Masque

Dennis and Bernie Schussel have been in the entertainment business since 1980 and have received the highest praise for their dedication to service and creative entertainment. In 1993 they had decided to take the stage show idea to its next level by developing a unique approach to Cirque Theater. The first and original production of *Fire and Ice* was a tremendous success selling out performances around the world. Performing for corporate and theaters with sold out dates became the norm. For Cirque Le Masque, the audience saw there was a difference with the level of acts and the creativity of the show. Dennis and Bernie Schussel has unveiled their new show "Carnivale" and will soon bring this to the USA after a 6 week engagement in Athens, Greece. When asked about the fact they have been doing this for so long the response is always the same "we love what we do..., and we care about what we do"...And this love and care can be felt in every performance anywhere around the world...



Cirque Le Masque has captured audiences worldwide with sold out shows and standing ovations. Appeared on NBC Live and headlined in Atlantic City, Foxwoods Casino and

Las Vegas, to name a few. *Cirque Le Masque* has unveiled its newest production "Carnivale", filled with energy, color, and an original story line. "We have taken this show to the next level. The artistry of the performers display quick reflexes, impeccable timing, and human art. *Cirque Le Masque* has taken an idea, a framework, and developed an amazing display of theatrical artistry, and comic audience interaction. *Cirque Le Masque* has achieved the perfect blend of theater technology and creative entertainment that is pleasing and exciting to an audience of all ages. The future of live theater is here today. Enjoy the experience.*

APPEARANCES:

- NBC TV Weekend Show
- Atlantic City- Hilton Hotel
- Foxwoods Casino
- Racetracks
- Theaters and universities around the USA...
- European tours
- Museums
- Outdoor tents
- Hotel ballrooms



ACTING AND MUSICAL THEATRE TRAINING

all levels of acting for all ages thru adult



GATEWAY ACTING SCHOOL

LEARN FROM THE PROFESSIONALS!

286-9014

GATEWAY PLAYHOUSE STAFF

ADMINISTRATIVE

Executive Producer Ruth Allan
 Producer.....Paul Allan
 Associate Producer.....Jeff Bellante
 General ManagerGale Edwards
 Company ManagerAaron Kelley
 PublicistLinda Unger
 Assistant to the ProducerKeith Llewellyn

ARTISTIC

Artistic Director.....Robin Joy Allan

PRODUCTION

Production ManagerBrian Loesch
 Assistant Production Manager.....Jose Santiago

BOX OFFICE

Box Office ManagerLaurie Parr
 Director of Group Sales.....Annmarie Allan
 Group SalesLinda Unger, Claire Ward
 House ManagerJoanne Famiglietti
 Box Office StaffAshley Felicio, Nadine Hazard, James O'Donnell, Brian Strumwasser

FACILITIES

Facilities ManagerDon Harrison
 Concessions Manager.....Carl DeMasi
 Cleaning ContractorFiori Enterprises, Inc.
 Grounds MaintenanceHTM Landscaping Company
 House Staff.....Eric Burt, Brendan Dooling, Douglas Gentile,
 Stephen Ledesky, Chelsea Mojallali, and Lauren Parr
 General Counsel.....Ann L. Nowak & Associates

WARNING – The photographing or sound recording of any performance is strictly prohibited. Gateway Playhouse offers a wireless sound enhancement system for the hearing impaired. Inquire at the box office for more information.

FIRE NOTICE — The exit indicated by a red light and sign nearest to the seat you occupy, is the shortest route to the outside. In the event of fire or other emergency, please do NOT run. WALK to that Exit. However, under normal circumstances, when leaving the Theatre, use the center rear exits. SMOKING is prohibited in the BUILDING, as required by the Suffolk County NO SMOKING Ordinance. Smoking in any area designated "No Smoking" renders the offenders subject to a fine, or imprisonment, or both.

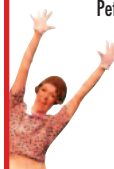
**GATEWAY PLAYHOUSE would like to thank our volunteer staff
for their dedication and support. IT IS MUCH APPRECIATED.**

Marie Rachek - Head Usher

Al Alberg, Missy Atchue, Carmela Aiosa, Olga Belz, Diane Gordova, Betty Entress, Joyce Gambino, Linda Good, Marian Harrison,
 Peter Haustein, Joanne Hittner, Mary Lanier, Connie Merced, Sue Nemet, Peter Pernice, Linda Randolph, Sandy Reifel,
 Allan Ritchie, Charlene Sasto, Terry Seng, Carol Weinstein, Mary Wirth

IF YOU WOULD LIKE TO JOIN OUR VOLUNTEER STAFF CALL 286-0555

**Become part of the Gateway Family
and receive complimentary tickets to our shows!**



Searles GRAPHICS, INC.



DESIGN **Innovation** PRE-PRESS **Precision** MARKETING **Solutions** PRINTING **Versatility**

56 Old Dock Road | Yaphank NY 11980

† 631.345.2202 | f 631.345.0975 | www.searlesgraphics.com

Put A Bundle Of Entertainment Under The Tree

A season full of blockbusters including
the Long Island Professional Premieres of

**THE PRODUCERS AND
BEAUTY AND THE BEAST!**

**THE WEDDING SINGER
SHOWBOAT MOVIN' OUT
PAJAMA GAME SWEENEY TODD
DAMES AT SEA
DIRTY ROTTEN SCOUNDRELS
BYE BYE BIRDIE**

THE PERFECT GIFT

Gateway Gift Certificates are now available for the 2008 Season at Gateway Playhouse in Bellport, and any show produced by Gateway at the Patchogue Theatre, in downtown Patchogue! **They come in all colors, shapes and sizes!** Gift certificates can be used towards the purchase of individual or season tickets, and are available in any denomination. *The Producers* and *Beauty and the Beast* are confirmed for 2008, the rest of the proposed shows are pending release.

Call: (631) 286-1133 Log on: gatewayplayhouse.com or Visit the Box Office

American Airlines, American Eagle, AA.com and We know why you fly are marks of American Airlines, Inc. American Eagle is American's regional airline affiliate.



Paradise isn't lost. We fly there every day.

We know the way to 35 destinations on 25 unforgettable islands in the Caribbean and The Bahamas. Each and every one a paradise found. No one offers more service from the U.S. than American and American Eagle. Book your next trip online at AA.com or call us at 1-800-433-7300.

We know why you fly® American Airlines®
AA.com 

