

SUMMER 2007

PLAYBILL

COLD AS ICE

MAY 16 - JUNE 17

Gateway
PLAYHOUSE

LET'S GET THE SHOW ON THE ROAD!



*PLAN NOW in order to protect
everything you've worked a lifetime to acquire.
We are Long Island's Elder Law, Special Needs and
Estate Planning firm.*

DAVIDOW, DAVIDOW, SIEGEL & STERN, LLP

Original Firm Founded 1913

Main Office:

1601 Veterans Memorial Hwy. Suite 330 Islandia, NY 11749

Tel: (631)234-3030 Fax: (631)234-3140

Nassau: 666 Old Country Road Suite 810 Garden City, NY 11530 Tel: (516)393-0222 Fax: (516)228-6672

East End: 13105 Main Road, P.O. Box 344 Mattituck, NY 11952 Tel: (631)298-9600 Fax: (631)761-0370

www.davidowlaw.com

The Best Advice Leads to Lasting Solutions!



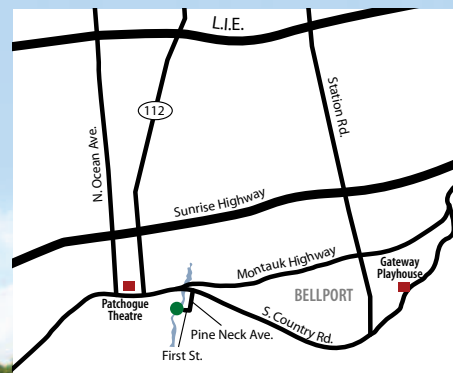
631.475.9843

Outdoor Bar & Patio Now Open

- Open for Lunch and Dinner Tuesday through Sunday •
- Enjoy Live Music Fridays & Saturdays •

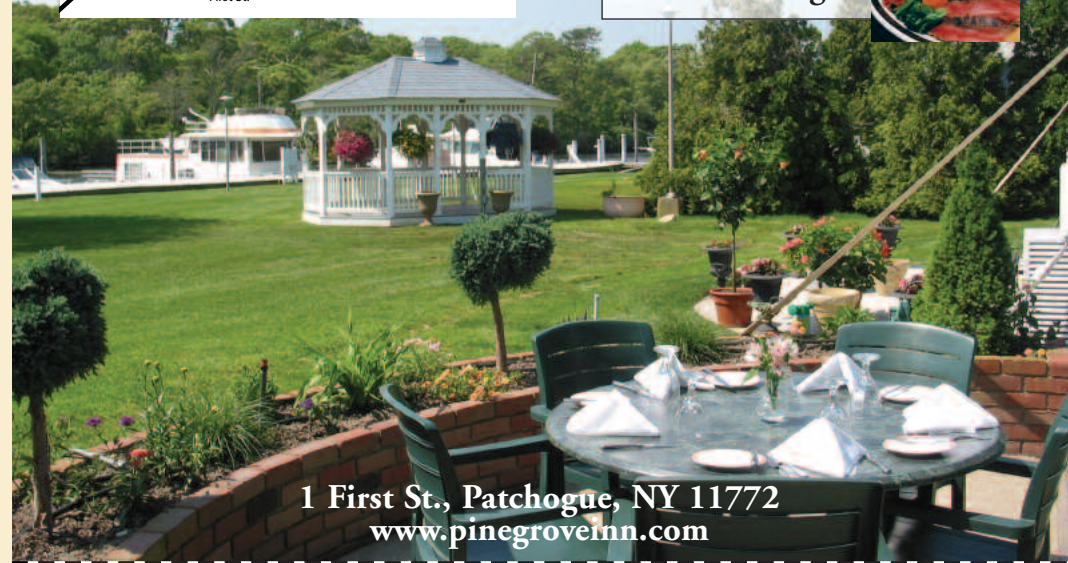
*Fresh Local Seafood • Prime Beef
• Traditional German Fare*

*Catering for all occasions –
(3 separate rooms)*



**Wednesday
Lobsterfest**

**Thursday
Prime Rib Night**



1 First St., Patchogue, NY 11772
www.pinegroveinn.com

**PRESENT THIS VOUCHER FOR
\$5 OFF LUNCH**

on checks of \$35 or more

Expires October 28, 2007. Reservations suggested.

With this voucher. Not valid with other offers. One voucher per couple. Not valid on holidays.

**PRESENT THIS VOUCHER FOR
\$10 OFF DINNER**

on checks of \$65 or more

Expires October 28, 2007. Reservations suggested.

With this voucher. Not valid with other offers. One voucher per couple. Not valid on holidays.

AREA RUGS TO GO

Find us on the web at
arearugstogo.com

100% Price Match Guarantee
Free Shipping

*Specialists in
Quality & Service*



*Family Owned &
Operated Since 1976*

CARPET EXPRESS

1135 Montauk Hwy., Mastic • 399-1890/653-RUGS
721 Rte. 25A (next to Personal Fitness), Rocky Point • 631-744-1810

Open 7 Days



We love it when you love what you're walking on.

W^{m.} J. O'Neill

*Sales Exchange Co., Inc.
Jewelers and Collateral Loanbrokers*

Classic and
Contemporary



Platinum
and Gold

Jewelry designs that will
excite your senses.

Expert Jewelry Repairs

One East Main St., Patchogue 631.289.9899 www.wmjoneills.com

Mention this ad for 10% discount on purchase

WELCOME...

Enjoy the Beauty of Bellport

Equitable Division Today...

Financial Strategies for Tomorrow

Assisting attorneys and their clients with the short-term and long-term financial impacts of divorce with strategic planning

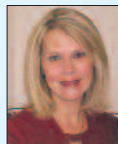


Maria T. Carrara, CPA, CDFA™
CERTIFIED DIVORCE FINANCIAL ANALYST™

Offices in Woodbury & Bellport Village

T 516.443.3204 E CarraraM@optonline.net

www.CPACDFA.com



**COLDWELL
BANKER**

BELLBROOK REALTY, INC.

Each Office Is Independently Owned And Operated.

JOANNE D. TUTHILL

Licensed Real Estate Salesperson/Notary Public

(631) 289-4000 EXT. 21 Business

(631) 289-4006 FAX

(516) 521-3653 Cellular

tuthi4@aol.com www.cbllbrookrealty.com

440 South Country Road, East Patchogue, NY 11772



*An Established
Tradition of Service*

FOR ALL YOUR
REAL ESTATE NEEDS
CALL YOUR LOCAL BROKER
SERVING THE AREA FOR
OVER 20 YEARS!

www.swanproperties.com

322 South Country Rd.
East Patchogue, NY 11772

631-289-5550

631-286-1222

- Residential
- Commercial
- Free Market Analysis
- Notary Public



Lawnfantasia

Landscaping Service

Design • Patios • Ponds

ROGER MAY & MATT PALERMO

(631) 286-0941

P.O. Box 652 • Bellport, N.Y. 11713



**COLDWELL
BANKER**

BELLBROOK REALTY, INC.

Each Office Is Independently Owned And Operated.

JANIS PALERMO

Licensed Real Estate Salesperson

(631) 289-4000 Business

(631) 289-4006 FAX

(631) 872-3693 Cellular

www.cbllbrookrealty.com

440 South Country Road, East Patchogue, NY 11772



- Call us BEFORE your Insurance company
- INSURANCE DIRECT BILLING
- AUTO GLASS
- CUSTOM MIRRORS
- TABLE TOPS
- INSULATED GLASS
- STORE FRONTS
- RESIDENTIAL GLASS

631.286.1885

150A Main Street, Bellport, NY 11713

Villa Lombardi's

The same family that over the past three decades has created one of Long Island's most prized restaurants, has now set the standard to judge reception sites. Our menu is custom designed to meet even the most demanding requirements of each host and hostess. As you enter our newly renovated lobby, you are transported to a romantic Mediterranean Villa.

Our attention to detail is second to none.

Find out why "Reputation is Everything"

877 Main Street, Holbrook, New York 11741

631-471-6609 • www.villalombardis.com

The Best Burgers & Wraps You'll Ever Have!



**Monday thru Friday:
Lunch Specials**

11:30-4:30 p.m.

\$8.95

**Wednesday
Pasta Night**

4-10 p.m.

Sonoma Bar Party

All Pint Beer \$3.00

All Martinis \$6.00

All Day! Every Day! Closed Tuesdays



On or Off Premise Catering
We Can Cater Your Party – 20-120 Guests in our
Private or Semi-Private Dining Room



5745 Sunrise Hwy., Holbrook • 218-3888

Sun Lakes Shopping Ctr. (Stop & Shop) Broadway Ave. Exit off Sunrise Hwy.

Open 6 Days for Lunch & Dinner - Closed Tues.

Visit Our Website: www.sonoma-grill.com

All Our Food Is Homemade & Prepared to Order

WINE & DINE MONDAYS FREE BOTTLE OF WINE

With Purchase Of 2 Entrees. With Coupon. Cannot Be Combined. Dine-In Only.

A LETTER FROM THE PRODUCER

2007 starts off in an unconventional way; a first time ever (on ice!) musical - heading for Broadway. This original concept show has been in development for several years and we are now ready to present it to our Gateway patrons - with a diverse cast of professional actors and skaters, and featuring Olympic Gold Medalist, Oksana Baiul.

Over the years we have presented a wide variety of shows. Our mission has always been to give the public a wonderful alternative to the hustle and bustle of the city by bringing high class entertainment right to their doorstep. We strive to present shows never before seen at Gateway, as well as mixing in classical favorites.

While we wait for shows like THE PRODUCERS and LES MISERABLES to become available, we have the opportunity to broaden our artistic scope by presenting cutting edge shows like COLD AS ICE and the much anticipated CIRQUE DREAMS. Then we add in a touch of the classic with Sinatra, a title made famous by Marilyn Monroe, the huge Broadway success DREAMGIRLS, recently brought back to the spotlight by Hollywood - and finish off with a country rockin' bull ridin' adventure - URBAN COWBOY.

I would like to thank you for your support in helping us achieve our continuous goals. Without our loyal patrons, our staff and our ever increasing list of professional actors, musicians and technicians - Gateway Playhouse would be nothing but a dream, and we are proud to make it a reality, season after season...

Here's to 2007!

Paul Allan

Frank R. Egan, DDS, PC
Certified, American Board of Orthodontics



Hospital Road
Professional Center
250 Patchogue-Yaphank
Road - Suite 14
East Patchogue, NY 11772
(631) 289-3990

www.TeethOnTheMove.com

Richard B. Miller, Assistant Manager
Vice President - Investments

Robert A. Nogrady, Branch Manager
Vice President - Investments



A.G. EDWARDS
FULLY INVESTED IN OUR CLIENTS™

Trusted Advice - Exceptional Service

500 West Main, Suite 105
Babylon, NY 11702
(631) 661-1600 - toll-free: (877) 613-1600
richard.miller@agedwards.com
robert.nogrady@agedwards.com

Member SIPC - 2007 A.G. Edwards & Sons, Inc.

Richard York

OF PATCHOGUE



631-475-1047
14 South Ocean Ave.
Patchogue

From Patchogue Theatre entrance,
1 block west and four stores south

Quality Footwear for the Entire Family Since 1927

- Helpful, Friendly Service
- Areas Largest Selection of Sizes & Widths AA-EEEEEE

Stride Rite, Easy Spirit, Florsheim, New Balance, Teva, Timberland, Skechers, Dexter, Hotter, Keds, Reebok, Dyeables, Topsider, Soft Spots, Clarks, Naturalizer, Hush Puppies, Daniel Green, Foamtreads, Toe Warmer Boots, etc.

10% OFF any purchase
with ad only

Excludes Easy Spirit, Dr. Martens & other offers. Expires 12/31/07



Proud to support
Gateway Playhouse

Right where YOU need us.

North Fork Bank has over 350 branches throughout the New York Metropolitan area and New Jersey to serve your financial needs. To locate the North Fork Bank branch nearest you, call our *Telephone Express Banking Center* at 877-694-9111 or visit us at www.northforkbank.com



Member FDIC



www.theoar.com

Enjoy Live Music Wednesday thru Sunday Evenings
Open for Lunch & Dinner 7 Days a Week

Located on the Patchogue River - 264 West Avenue, Patchogue • 654-8266

- Inquire about our Dinner Cruises
- Casual Waterfront Dining
- Happy Hour 4-7
- Sunday Brunch 11-2

ASSOCIATE PRIME MEAT MARKET

- A Full Line of Groceries
- Meats & Poultry
- Gourmet Gift Baskets

Let Us Cater Your Next Party!

109 Maple Ave. Patchogue, NY 11772
Phone: (631) 475-1749 Fax: (631) 447-5086

www.associatemarketli.com



Patricia Whitlock
631-758-9200 ext. 228

John Ryley
631-744-1552

REVERSE MORTGAGE SPECIALISTS

55 Medford Avenue, Suite A, Patchogue, NY 11772

Gateway
PLAYHOUSE

Presents

COLD AS
ICE

Created by
Frank D'Agostino

Music and Lyrics by
Frank D'Agostino

Book and Lyrics by
Frank D'Agostino and Dean Anderson

Starring

OKSANA BAIUL

Producer
PAUL ALLAN

Associate Producer
JEFF BELLANTE

General Manager
GALE EDWARDS

Artistic Director
ROBIN JOY ALLAN

Production Manager
BRIAN LOESCH

Company Manager
ERIN KRAUS

Production Coordinator/Skate Casting
TARA MODLIN

Costume Coordinator
MARIANNE DOMINY

Lighting Design
AARON SPIVEY

Scenic Design
KELLY TIGHE

Costume Design
JIMMY JOHANSMEYER

Skate Choreography by
TARA MODLIN

Musical Direction and Orchestrations by
JEFF WAXMAN

Directed and Choreographed by
KEITH ANDREWS

CAST OF CHARACTERS

FIGURE SKATERS

Maya	OKSANA BAIUL
Josh	DERRICK DELMORE
David	PHILIP DEYESSO
Chelsea	ERICA STARKMAN
Lindsay	STEPHANIE ROSENTHAL
Dean	LANCE VIPOND
Kelly	SHANNON LENIHAN

ACTORS

Maya	STACIE BONO*
Josh	DENNIS KENNEY*
David	BRIAN GLIGOR*
Chelsea	JESSICA MORTELLARO
Lindsay	ELIZABETH DANIELS*
Dean	STEVEN DOUGLAS STEWART
John	JOHN FLYNN*
Jan	ALANNA WILSON
Jan (Weekends)	KT MILLS
Natalia	ROBIN IRWIN*
Veronica	TAMRA HAYDEN*
Gwen	TINA JOHNSON*
Coach Doug	MICHAEL BAKER*
Coach Steven, Jonathan Brown	JULIAN SCHRENZEL
Jack	KEITH FRANCIS

ENSEMBLE

DANIELLE DOMINICI, CINDY GURKA, MIMI ISHIDATE, LISA LAMACCHIA,
CHRISTOPHER LAROSA, MONICA MALCOMSON, JODI LYNNE SYLVESTER

CHILDREN'S ENSEMBLE

SAMANTHA BOYLE, MAYA GINOR, MARIA GOROKHOV, LANIE HALPERN, ALEXA KAMEN,
LAUREL MALLARDI, ASHTON MALLARDI, JULIA PASSARO, JENNA POLITOSKI,
ALEXA BLAISE SANDBERG, MARIA LIVIA SCARSELLA, DEVIN SIMPSON, JORDAN SIMPSON,
BRITTNEY SKARULIS, ALEXANDRIA SOBELMAN, ADELAIDE PONTE USDIN



The Musicians employed in this production are members of
the American Federation of Musicians.



*Actors employed in this production are members of
Actors' Equity Association, the union of Professional
Actors and Stage Managers in the United States.

ssdc

The Director/Choreographer is a member of the Society of Stage Directors
and Choreographers, Inc., an independent national labor union.

WARNING – The photographing or sound recording of any performance is strictly prohibited. Gateway Playhouse offers a wireless sound enhancement system for the hearing impaired. Inquire at the box office for more information.

FIRE NOTICE — The exit indicated by a red light and sign nearest to the seat you occupy, is the shortest route to the outside. In the event of fire or other emergency, please do NOT run. WALK to that Exit. However, under normal circumstances, when leaving the Theatre, use the center rear exits. SMOKING is prohibited in the BUILDING, as required by the Suffolk County NO SMOKING Ordinance. Smoking in any area designated "No Smoking" renders the offenders subject to a fine, or imprisonment, or both.

Playbill Designed and Printed by Searles Graphics, Inc.

CAST OF CHARACTERS

UNDERSTUDIES

Maya	SHANNON LENIHAN	Dean	JULIAN SCHRENZEL
Josh	JULIAN SCHRENZEL	Gwen	LISA LAMACCHIA
David	MICHAEL BAKER*	Veronica	JODI LYNNE SYLVESTER
Chelsea	SHANNON LENIHAN	Natalia	JODI LYNNE SYLVESTER
Lindsay	SHANNON LENIHAN	Coach Doug	JULIAN SCHRENZEL
John	MICHAEL BAKER*		

MUSICIANS

Conductor/Piano	JEFF WAXMAN
Keyboards	BRENDAN WHITING
Trumpet	JOE BOARDMAN
Reeds	MARK GATZ
Bass	CATHERINE O'MALLEY
Percussion	RICHIE SHAPIRO

MUSICAL NUMBERS

ACT I

"Overture"	Orchestra
"All My Life"	Chelsea, Josh, Maya, David, Lindsay, Dean, and Company
"Skate, Skate"	Doug, Dean, Coaches, and Skaters
"Everything I Am"	Chelsea
"There is a Place"	Maya
"I'm King of the Ice"	Josh and Female Skaters
"Don't Look at Me"	Josh and Dean
"Skatin' Mama Lament"	Gwen, Veronica, and Moms
"Regrets Like Mine"	Veronica
"Get Up and Skate"	Lindsay
"We Get Lots of Snow in Canada"	David, Hockey Players, and Skaters
"All My Life (Reprise)"	Full Company

INTERMISSION

ACT II

"Nobody Knows"	Chelsea and Lindsay
"Until I Met You"	Maya and David
"I Never Took the Time"	Veronica
"What You Wish For"	David, Josh, Dean, Lindsay, Chelsea, Maya
"Finale – What You Wish For"	Full Company



OKSANA BAIUL



MICHAEL EDWARD BAKER



STACIE BONO



ELIZABETH DANIELS



DERRICK DELMORE



PHILIP DEYESSO



JOHN FLYNN



KEITH FRANCIS



BRIAN GLIGOR



TAMRA HAYDEN



ROBIN IRWIN



MIMI ISHIDATE



TINA JOHNSON



DENNIS KENNEY



LISA LAMACCHIA



SHANNON LEIGH LENIHAN



KT MILLS



JESSICA MORTELLARO



STEPHANIE ROSENTHAL



JULIAN SCHRENZEL



ERICA STARKMAN



STEVEN DOUGLAS STEWART



JODI LYNNE SYLVESTER



LANCE VIPOND



ALANNA WILSON

OKSANA BAIUL (*Maya on Ice*) When Oksana Baiul was only three years old, her Grandfather gave her, her first pair of ice skates. By the time she was just seven years old, she would have already won her first of many competitions. The Ukrainian Skating Federation immediately took notice of her natural balletic style on the ice. In 1994, at 16 years old, the whole world watched as Oksana captivated our hearts and won the Olympic Gold Medal, proving that she is the best in the world. Soon after Oksana moved to the United States, turned professional and Barbara Walter's named her "One of the 10 Most Fascinating Personalities of 1994." Born in Dnipropetrovsk, Ukraine, she was the only child of parents who divorced when she was two. Her father faded out of her life, leaving her mother and her grandparents to raise Oksana. When Oksana was 10, her grandparents died. Tragically, three years later, her mother died of ovarian cancer. Soon after, Oksana's coach immigrated to Canada and Oksana was totally alone. Since her victory in Lillehammer, Oksana has kept busy participating in figure skating tours and competitions around the country, including Champions on Ice, Stars on Ice, CBS Sports Ice

Wars, CBS Sports Olympic Winterfest, the Goodwill Games, Celebration of Gold and Hallmark Skaters™ Championship to name a few. Additionally, Oksana's life story was depicted in a CBS TV movie, *A Promise Kept: The Oksana Baiul Story* and she has published two books, *Secrets of Skating/Oksana Baiul* (Universe Publishing, 1997) and *Oksana; My Own Story* (Random House, 1997). Oksana has been profiled in several televised biographies including Lifetime Television's, "Intimate Portrait" (1998) and A&E's "Biography" (2003). Oksana is thrilled to be taking on this new challenge in her life, expanding her skating and her natural ability to perform, to musical theater. She is pleased to be originating the part of Maya in this new "cutting edge" show. While the Olympic Gold Medal seems like the pinnacle of skating, Oksana reaches everyday for new challenges and innovative ways to express her extraordinary gifts.

MICHAEL BAKER (*Coach Doug*) is pleased to be returning to the Gateway Stage after performing in *A Christmas Carol* this last holiday season. Michael has performed in several shows at Gateway on and off

ROE AGENCY INC. *Insurance Since 1898*

Personal Insurance
Commercial Insurance
Property, Casualty
Life
Health
Financial Services

♦ 125 East Main Street ♦
♦ Patchogue, New York 11772 ♦
Phone: 631.475.4000
Fax: 631.475.7648

Old Inlet Inn



Fine Dining Since 1980

Dinners from 5:00 p.m.
Sunday Brunch 12 - 3:00 p.m.
Sunday Dinner 5 - 8:00 p.m.
Closed Mondays

Two Minutes From
The Gateway Playhouse
Ten Minutes From
The Patchogue Theatre

Piano Bar Fri. & Sat. 9:00 p.m. - 1 a.m.

Walter A. Roe, Proprietor

108 So. Country Road, Bellport
286-2650

10% Entrée Discount
with Theatre Tickets

for the past six years making New York his home after college. Favorite shows at Gateway include: *Miss Saigon* (Capt. Shultz); *Jekyll and Hyde* (Newsboy); and *Scarlet Pimpernel* (Tussaud). When not on the Gateway Stage or teaching at the Gateway Acting School, Michael has been seen touring in shows throughout the country and in New York. He does miss his mother back at home on Bainbridge Island, Washington, and sends his love and thanks to her and his brothers, with special thanks to his Gateway family. He holds a B.F.A. in Acting from CW Post/LIU, and is a member of Actor's Equity Association. *Cold As Ice* has truly been an experience and he is excited to be a part of this brand new project with such a great cast and crew...and yes, he can now ice skate.

STACIE BONO (Maya) is thrilled to be performing in the first ever ice skating musical. Recently, Stacie originated the role of the villainess Laverna in the first national tour of *Barbie Live! In Fairytopia*. Film: *When a Man Falls in the Forest* (Sadie). Regional credits: *Bingo the Musical* (Honey), *Guys and Dolls* (Adelaide), *Me and My Girl* (Sally), *Crazy for You* (Polly), *Spring Awakening* (Martha) and *Brigadoon* (Fiona). Graduate of NYU (Tisch-CAP21). Proud AEA member. For GMA M.

ELIZABETH DANIELS (Lindsay) is very excited to be making her Gateway Playhouse debut! Previous credits include: *Cinderella* (Cinderella, Inside Broadway); *The Sound of Music* (Asian Tour); *The Music Man* (Zaneeta Shinn, La Comedia); *The Parrot* (Flea Theatre). Elizabeth has a B.F.A. from NYU, CAP 21. Many thanks to Dina and to Robin for giving me a job! Love as always to Mom and Dad for their constant support and to B., E., C., S., and all my friends in NYC! Proud new member of AEA.

DERRICK DELMORE (Josh on Ice) is a world renowned figure skater who has been a member of the U.S. Figure Skating International Team for 14 consecutive years. He has won numerous medals, including the 1998 World Junior title, and has made 17 straight appearances at the U.S. National Championships. Delmore has guest starred in shows throughout the world, and will be performing this fall in the nationally televised Stars, Stripes and Skates. Known for his combination of artistry and athleticism, he is credited as the first Junior to successfully complete a triple axel at the U.S. Championships.

He was also trained as a classical pianist in his early years, and earned the Paderewski medal for 10 years of playing at the national level. Delmore received an A.B. in Psychology and Communication from Stanford University in 2000, and currently coaches skaters in the Washington, D.C. area.

PHILIP DEYESSO (David on Ice) is extremely psyched to be making his Gateway Playhouse debut. His regional music theatre credits include: *Footloose*, *Silk Stockings*, *Phantom*, and *Forum*. He has also sailed the Caribbean for Disney Cruise Line performing in their mainstage musicals. Philip started figure skating after watching Ms. Baiul win her Olympic title. He has obtained three regional medals in freeskating, which qualified him for Sectional and National competitions. Special thanks to his family for their undying support and love, Frank and Tara for granting him with this wonderful opportunity, Tom and Lisa for their guidance, and also all his friends and fans who keep him going with their unending belief.

JOHN FLYNN (John) is delighted to be returning to the Gateway Playhouse, where he last appeared as Gregory Gardner in *A Chorus Line*. John is the co-creator of the underground hit *Showgirls: The Best Movie Ever Made. Ever!*. He can often be found performing at the Upright Citizen's Brigade, where he has written and performed in *Nights of Our Lives*, *Project Improviser*, and *Themepark Superstar*. John is a graduate of Hofstra University. www.allthingsflynn.com

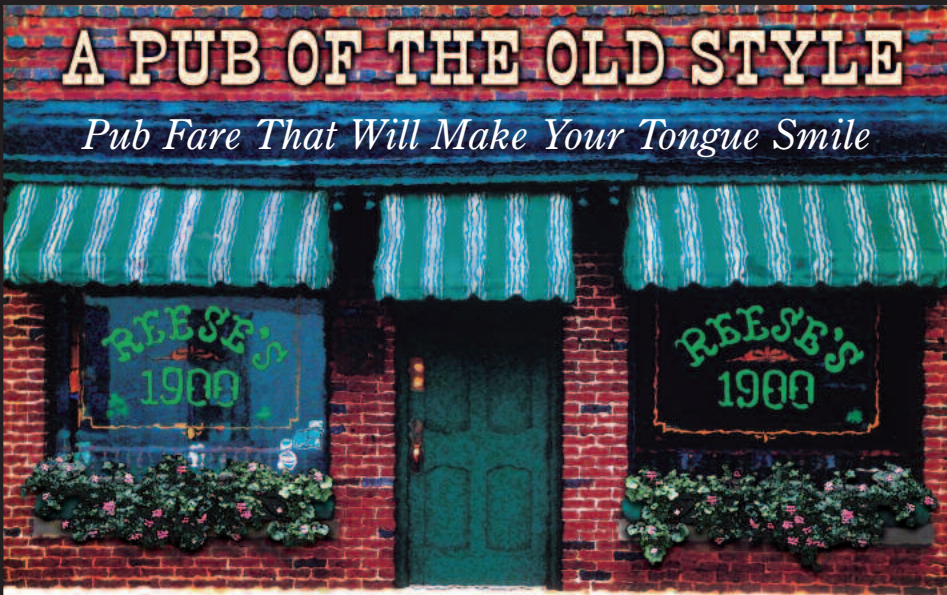
KEITH FRANCIS (Jack) is excited to be a part of his first production at the Gateway Playhouse. Over the years, Keith has performed in theaters throughout New York City and the region. Favorite credits include: *Crazy for You* (Bella Zanglar), *Sound of Music* (Capt. Von Trapp), *As You Like It* (Orlando), *Moon Over Buffalo* (Paul), *Taming the Shrew* (Pretucio), *Midnight Interlude* (Lord Derek Kensington) and more. He has trained in New York City at the Lee Strasberg Institute with Elaine Akins, he was a Member of Ensemble Studios NYC, and studied at Corner Loft Studios with Mark Lenard. Television Credits include *One Life to Live*, *Another World*, the Hollywood E Channel, and more. He has also performed as a SAG member in several feature films. He sends his appreciation and thanks to the entire cast and crew- with special thanks to his family for their love, support, encouragement and patience.

BRIAN GLIGOR (David) grew up in New Jersey, graduated Syracuse University, and now lives in New York City. Theatre credits include Mark in the National and Japan tours of *Rent* and Ethan in *The Full Monty*. TV credits include: "Guiding Light," "One Life to Live," and "All My Children." www.briangligor.com

TAMRA HAYDEN (Veronica) Broadway: *Les Miserables* (Cosette); *Cabaret* (Texas - Studio 54). Off Broadway: *Jacques Brel... (Zipper)*. National Tours: *Phantom of the Opera* (Christine); *Les Miserables* (Cosette - a role she performed over 1800 times!); *Fiddler on the Roof* (Hodel - opposite Theodore Bikel). Regional: *The Haunting of Winchester* (Sarah Winchester - San Jose Rep.); *It Ain't Nothin' But The Blues* (Arizona, Missouri and Seattle Reps.); *Eleanor: An American Love Story* (Alice Roosevelt - Ford); *Company* (Marta - Denver Center); *Carousel* (Julie Jordan - Casa Manana). Tamra's solo singer/songwriter CD is available on CDBaby: www.tamrahayden.com.

MIMI ISHIDATE (Ensemble Skater) is very happy to be a part of this brand new dream production. She is originally from Tokyo, Japan. She has worked in various projects in the past as a skater, dancer, and actress. Her theatrical credits include: *The King and I* and *Miss Saigon*. She also performed with Disney on Ice, Prince Ice World, and Ice Theater of New York. Her love of the performing arts extends to circus, cruise lines, and music video. She is featured in Madonna's, "Nothing Really Matters." Thank you to my family and friends for their love and support.

ROBIN IRWIN (Natalia) is delighted to be returning to Gateway after appearing last season as Ms. Pennywise in *Urinetown*. Broadway/National Tours include; The Tony Award-winning *Titanic*, *Grease!*, and even the ill-fated *Dance of the Vampires*, all original casts. Regional/OffBroadway credits include a number of sassy, scheming maids, and well-meaning prostitutes. Favorites: Aldonza in *Man of La Mancha*, and Sarraghina in *NINE* with D.J. Salisbury, Petra in *A Little Night Music*, and Dorine in *Tartuffe*. TV/Radio - "Sex in the City", "Jack and Mike", "Law & Order", and



A PUB OF THE OLD STYLE
Pub Fare That Will Make Your Tongue Smile

Relax Before or After The Show — Full Bar & Menu
 Kitchen Open 11 AM to 11 PM (Mon. thru Sat.) — Bar 'til 1 AM

70 North Ocean Avenue • Patchogue • (631) 289-1900 • www.reeses1900pub.com

voice-overs for everything from baby products to chain saws. Robin was invited to be a part of the Broadway All-Star Chorus celebrating Stephen Sondheim's 75th Birthday. She has also toured and sung with symphony orchestras around the world. Robin is a graduate of Northwestern University and teaches and coaches dynamic theater workshops throughout the country, and begins pursuits of a Masters Degree in Directing this summer. Love to Erick and my friends and family.

TINA JOHNSON (Gwen) is thrilled to be returning to Gateway this year after appearing as Miss Flannery in last year's *Thoroughly Modern Millie*. She has appeared on Broadway in *State Fair*, *Damn Yankees*, *She Loves Me*, *South Pacific*, *Festival*, and as Angel in *The Best Little Whorehouse in Texas*. Off Broadway credits include: *Christina Alberta's Father at the Vineyard*, *Blue Plate Special* at MTC, *Just So*, *Personals*, *Angry Housewives*, *The Audience* and most recently *Anne of Green Gables*. National Tours: Maggie in *42nd Street*, Lulu in *Footloose*, and Mrs. Claus in *The Radio City Christmas Spectacular*. T.V.: "Law and Order: SVU," "Murphy Brown," "Empty Nest," "Newhart," and Lurlene in NBC's Soap "Texas." Film: *Saving Face*, *Fireflies*. Proud

member of A.E.A. for 40 years. Yes, I was a child actor! Love to Mark and Alice.

DENNIS KENNEY (Josh) is honored to be sharing the stage with such talented performers. Credits include the production of *Mame* at the Kennedy Center starring Christine Baranski and Harriet Harris; the role of Eddie in the Las Vegas Company of *Mamma Mia!*; the first national tour of *42nd Street* (U/S Andy Lee); *The Pajama Game* at Baltimore Center Stage (Charley); Bernardo in *West Side Story* (Gateway Playhouse). He holds a B.F.A. in Drama from Carnegie Mellon University. He would like to dedicate this show to Robin Joy Allan. Thank you for always believing in me!

LISA LAMACCHIA (Skating Mother/Ensemble) is thrilled to be making her first appearance at Gateway Playhouse. Credits include: *Crazy for You* (Irene); *Pippin* (Catherine); *Grease* (Marty) and *Debbie Does Dallas The Musical* (Debbie). To my Mom, the beautiful and talented Linda Lemac. I'm all that I am because of you. Rest in Peace.

SHANNON LENIHAN (Kelly on Ice) recently graduated with Honors from Queen's College earning a Bachelor's degree in Theater and Dance. She is currently the Head Coach of Parkwood Skate School in Great Neck and a Choreographer for the Stars, Stripes, and Skates 2007 show. She is a former Cheerleader/Icegirl for the NY Islander's and a former North Atlantic Regional Competitor. This is Shannon's favorite role she has ever played as it combines her theatrical passion and figure skating ability. She would like to thank her family, Mark, Tara Modlin, Mori and the Parkwood team for all their love and support. A special thanks to Marie Lester, as it was Marie who instilled in Shannon the love of skating.

KT MILLS (Jan) After hosting Gateway shows for 13 years, this is the second production that KT has had the pleasure of being a part of. Thank you Ruth, Robin, and Paul for the opportunity! And thanks to everyone for their support, especially, Jo, Nick, Karen, and Neil. In her other life, KT hosts Afternoon-Drive on WALK Radio. Favorite parts include leading

roles in Christopher Fry's, *The Lady's Not For Burning* and Shakespeare's *Romeo and Juliet*. Musical Theater credits include: *The Boys From Syracuse* and *Side by Side by Sondheim*. KT will always be grateful for her unusual theatrical upbringing – her parents, themselves, are Broadway veterans.

JESSICA MORTELLARO (Chelsea) is thrilled to be returning to the Gateway stage. She has been a part of the Gateway family for 15 years starting with her role as the Balloon Girl in *Gypsy* at age 8. Since then, she has been seen at Gateway in *The Sound of Music* (Brigitta); *Big* (Ensemble); *Titanic* (Stewardess Hutchingson); *Gypsy* (Hollywood Blonde); as well as numerous Children's Theater and Acting School productions. Other credits include: *The Real Thing* (Debbie) at Syracuse Stage, *The Teaspoon One Act Festival* at The Producer's Club, and *The Bruins*, an independent film, which will premiere on Long Island in October. Much thanks to Robin, Paul, and everyone at Gateway for more and more wonderful memories at this theater; and all my love to my Mom, Dad, and brother Michael.

(Continued on page 22)

IMAGINE THE ADVENTURES YOU'LL HAVE



7 NIGHT Caribbean Sailings Starting at \$599

BAY TRAVEL & TOURS
YOUR ROYAL CARIBBEAN® EXPERTS

Call **631.447.6440**
for latest specials

440 B South Country Rd. East Patchogue, NY 11772



Get out there.
Ships registered in the Bahamas

Debra Canavan
CLASSICS



Michael Stars
Trina Turk
Shoshanna
Nicole Miller
Parameter
Robert Rodriguez
Lilly Pulitzer
Milly
Susana Monaco


Denim, Swim
Great Accessories
Tommy Bahama
For Men
Vineyard Vines
and more

Casual, Career & Cocktail

53 Main Street, Sayville – 631.563.9385

Bellport Country Club

www.bellportcountryclub.com



- Always open to the public
- Conveniently located in the picturesque village of Bellport on South Country Road - just minutes from Gateway Playhouse and the Patchogue Theatre
- Great for large groups or an intimate dinner for two
- Restaurant overlooks the lush golf course and the Great South Bay
- A favorite for pre- or post-show dining
- Reservations recommended, call **286-4227**

Also visit **Irish Coffee Pub** on CARLETON AVENUE in EAST ISLIP • 277-0007

The Show Goes On... Before The Play & After The Matinee, Bellport Village Welcomes You

BellportArts.com - When looking for unique gifts and one-of-a-kind home decor items, shop Bellport



*Pamela Lerner
& Kate Carmel
Antiques*

Tel 631-803-2689
147 Main Street,
Bellport NY 11713
e-mail pamelalernerantiques@msn.com

www.pamelalernerantiques.com

PHOENIX FINE ARTS GALLERY

Monthly Art Exhibits
Custom Picture Framing
Photo Restoration
Fine Hand Crafted Gifts

139 South Country Rd. Bellport
776-0811

www.phoenixfineartsgallery.com



SUGAR LOAF CAFE

Enjoy scrumptious breakfasts, lunches,
light dinners and the best coffee around!

141 MAIN STREET • 286-5652

**BELLPORT
JEWELERS & GALLERIES**




We Buy & Sell
Jewelry
Coins
Watches

Goldsmith & Numismatist on Premises

631-286-7700
WWW.BELLPORTGALLERIES.COM
5 BELLPORT LANE
BELLPORT, NY 11713

Drop off your repair work before the show!



THE BELLPORT

Steps away from the Gateway Playhouse

★★★★
New York Times Review

159 South Country Road, Bellport, New York 11713
(631) 286-7550

THE VARIETY MART

An Old Fashion Five & Ten

Celebrating Our
50th Year

138 Main Street
Bellport, New York 11713
631-286-2210

Shop and enjoy
the relaxing
book room at...

**Treasure
Island
Antiques
& Books**



143 Main Street
286-8503

Find Your Gardening &
Decorating Inspiration at

***Inside
Home and gardens Out**


Home & Garden
Necessities and Accessories

Flowering Plants • Pottery
Candles • Garden Tools & Shoes
Fresh Flowers • Organics
Home & Garden • Decor and Gifts

631.286.8370
145 Main Street
www.insideouthomeandgardens.com

PAPA NICKS PIZZA

Gyros
Salads
Heros
Dinners



Daily Lunch
Specials

286-6400
117C-South Country Road, Bellport Village, NY

JEWELRY - SCULPTURE - CERAMICS - ART GLASS

Village Silversmith Gallery

Representing Internationally Recognized
Silversmiths and Goldsmiths
Since 1971



631-286-1660
149 Main Street, Bellport
www.villagesilversmith.com

Sign up today for your **FREE**
Bellport Discount Card!

Save money by supporting your local businesses!
To receive your card just fill out this form and mail to:
Bellport Chamber of Commerce, PO Box 246 Bellport NY 11713
Check our website www.bellportchamber.com for the latest
discounts and offers!

Name: _____
Address: _____
State: _____ Zip: _____
E-mail: _____



Carla Morla's

**ICE CREAM PARLOR
& OLD FASHIONED CANDY SHOP**

COUPON COUPON COUPON

Buy 1 Get 1 Half Price

COUPON COUPON COUPON

8 Bellport Lane, Bellport Village, NY 11713
631-286-0044

Located across the street from the Chowder House
email us at CarlaMarlas@hotmail.com

STEPHANIE ROSENTHAL (*Lindsay on Ice*) has been figure skating for over fifteen years. She is a four-time US National competitor. At the 2006 National Championship, where she placed 8th, she received the Professional Skaters Association "Most Outstanding Performance" award. She is known for her innovative style and unique choreography, especially her ability to bring hip hop dance onto the ice. Steph has been skating in shows from the time she was ten years old. She was a Child of Light in the Olympic Opening and Closing Ceremonies. She has had the honor of being a soloist and guest star in several shows in her hometown of Salt Lake City, Utah as well as, the Sun Valley Ice Show, Champions on Ice, and the Jimmy Fund Show. She has been dancing since she was four years old and has been a choreographer and dancer in several different companies. She currently attends Yale University, where she most recently choreographed, *Little Shop of Horrors*, the musical. She is also a performing and choreographing member of both Yaledancers and Rhythmic Blue hip hop dance company at Yale. She is absolutely honored to be a part of this production. This has been an incredible and exciting experience.

She would like to thank the rest of the cast, her friends, her parents Lisa and Harry Rosenthal, and her sister Mallory for their love and support.

JULIAN SCHRENZEL (*Coach Steven, Jonathan Brown*) is very happy to be making his Gateway Playhouse debut in *Cold As Ice*. Originally, from Seattle, WA, Julian has lived in New York City for the past three years. Musical stage roles include: Sky Masterson in *Guys and Dolls*, Max in *Lead Me a Tenor*, Riff in *West Side Story*, Jesus in *The Passion*, and Perchik in *Fiddler on the Roof*. T.V. and film credits: "Law and Order" and industrial films for I.B.M. and New Balance. Feel free to check him out at www.schrenzel.net. Julian dedicates these performances to his beautiful and supportive fiancé Jenny.

ERICA STARKMAN (*Chelsea*) is originally from Miami, Florida and now lives in Princeton, New Jersey. She is a member of the Skating Club of New York and has been trained by Andrei Pachin, Debbie Starkman, Robin Wagner, Bonni Retzkin, Peter Burrows, Ron Ludington, and Jeff DiGregorio. Erica is a USFSA Double Gold Medalist in Moves in the Field and

Freestyle, North Atlantic Regional Senior Competitor and International Competitor. She has also been a New York Islanders Pepsi Girl Cheerleader at Nassau Coliseum and has performed at Madison Square Garden, Rockefeller Center and Wollman Rink.

STEVEN DOUGLAS STEWART (*Dean*) is thrilled to be making his debut performance with Gateway Playhouse in *Cold As Ice*. Hailing from a small town in Texas, Steven has now become a proud New Yorker. His other regional credits include: *A Chorus Line* (Mike); *Disney's Beauty and the Beast* (Lumiere); *Cats* (Skimbleshanks); *Forever Plaid* (Sparky); *You're a Good Man Charlie Brown* (Snoopy); and Elton John and Tim Rice's *Aida*. Steven holds a B.A. in Musical Theatre from West Texas A&M University. He would like to thank God, as well as, his family and friends, without whom he would be nothing.

JODI LYNNE SYLVESTER (*Skating Mother/Reporter/Ensemble*) is elated to once again be part of the Gateway Family where she was last seen in *A Christmas Carol* this past December. She holds a voice degree from the Opera Institute at Boston

University. Dedicated to show business for 15 years, Jodi has traveled the world in operas, musicals, plays, film, TV, radio and as a spokesmodel. Off-Broadway: *Antigone* (Chorus Leader), *Swamp Fever* (World Premiere), *No Greater Love* (Virgin Mary) Regional Favorites: *Hello Dolly!* (Dolly), *Phantom* (Christine), *Best Little Whorehouse in Texas* (Miss Mona), *Jekyll and Hyde* (Emma), *Carousel* (Julie), *South Pacific* (Nellie), *Little Women* (Aunt March), *Beauty and the Beast* (Mrs. Potts)...to name a few. Tours: *Kiss Me Kate* (Kate), *Music Man* (Marian), *A Christmas Carol* (Christmas Past), *Titanic: The Musical* (Alice Beane), *Man of La Mancha* starring Sheena Easton and Walter Charles. TV: HBO's "Sex and the City." Many thanks to the Lord, family and friends for their gifts of love and support. What an honor to be a part of this exciting World Premiere!!!!

ALANNA WILSON (*Jan*) is thrilled to be performing with Gateway for the first time! In NYC, she was last seen in *Christmas Interrupted* (The Producer's Club) and *Wishing Time* and *The Mask of the Dancing Princess* with Vital Theatre Company. Regional credits include: *Into the Woods* (Little Red); *Hair* (Crissy);

South Country Inn

Fine Italian and Continental Cuisine

Stop in after the Show for Dessert or Cappuccino - Full Bar Available

A short drive from both theatres on South Country Road.

**Special packages for parties & theatre groups.
Open Tuesday - Sunday, for Lunch & Dinner
Reservations recommended**

668 South Country Rd., East Patchogue **758-1919**

**Complimentary glass of wine
with your lunch or dinner when
you present show tickets or this ad.**

**Moderately Priced Dinners
Starting at \$13.95**

**Early Bird Specials Served
Complete - Daily 3:30 - 6 PM
Sundays 1 - 6 PM**

**Daily Lunch Specials
Tuesday - Sunday**



Cassel GMC TRUCK SALES

2007 Acadia



GMC

WE ARE PROFESSIONAL GRADE™

550 North Ocean Avenue • Patchogue, NY
3 Miles South of LIE • 1 Block North of Sunrise Hwy.

1-800-758-5811
SALES • PARTS • SERVICE
WWW.CASSELTRUCKS.COM

CAVANAUGH'S

"Let's Have Fun"

Est. 1986

Lunch Served

Tuesday - Sunday, Starting at 11:30 a.m.

Late Night Dining

Kitchen Open Till 11 p.m., Tuesday - Sunday

DINING SPECIALS

Mondays - Closed

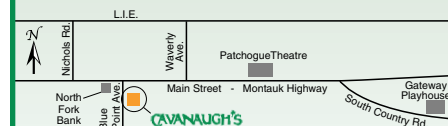
Tuesdays - 20 Oz. Porterhouse \$12.99

Wednesdays - Irish Night

Thursdays - Prime Rib \$12.99

Friday Nights - Seafood Marinara Platter

Sundays - 2 for 1 Wings



Open 6 Days - Tuesday-Sunday 11:30 a.m.-2 a.m.
your neighborhood restaurant & pub
255 Blue Point Avenue, Blue Point
631-363-2666

Once Upon a Mattress (Winnifred); and Annie (Lily St. Regis). Alanna can also be seen in the upcoming feature film, *My Sassy Girl*. Special thanks to Robin and everyone at Gateway, as well as my family and friends for their love and support.

LANCE VIPOND (*Dean on Ice*) is excited to be making his debut with the Gateway Playhouse. Stage credits include: *Gypsy*, *The Life*, *Me and My Girl*, and *Oklahoma!*. As a figure skater, Lance was a

Canadian National team member and a World Junior Competitor. Thanks to Frank and the entire Gateway team for this once in a lifetime opportunity.

PAUL ALLAN (*Producer*) has been involved in the theatre since before he can remember. In the early days of Gateway, he spent his summers following around his grandfather who had his hands full trying to make ends meet - running a theatre in the 60's. Paul grew up here, looking forward to each summer and



475-1733 878-2010

10% Off Complete Cesspool Service With This Ad

Family Owned and Operated For Over 50 Years

- Dedicated to Honest & Reliable Service
- Precast Cesspools Installed
- Portable Toilet Rentals (handicapped accessible available)

1 Chapel Avenue, East Patchogue, New York 11772



mywinesdirect.com

mywinesdirect.com

With MyWinesDirect.com - Discover Great Wines The Easy Way

- FREE SHIPPING on all orders
- Find hidden gems from small, undiscovered vineyards around the world
- Delivered direct to your door
- Choose from pre-selected 6-bottle packs, or mix & match as you please
- Enter code **PLAYTEN** at checkout to **Save \$10** on your order



MONTI'S
AUTO WORKS

It's in the Details

Expert Auto Collision Repairs
All Insurance Accepted

1791 Montauk Highway
Bellport, NY 11713

286-2116

being able to do more each year. By the time he was a teenager he was beginning to take charge of maintaining this 7 acre complex as well as becoming an integral part of the back stage crew. In the 80's as a young Gateway producer, Paul spent part of the winter months working in NY on many off-Broadway shows - serving as technical supervisor, production manager, and/or show carpenter. At the same time he co-founded a touring company whose shows traveled throughout the US and other countries worldwide. The set rental company was also founded at this time and Gateway scenery is constantly being trucked to various theatres across the country. The main focus, though, is still the productions he produces here for our patrons. This season begins with his 159th production.

KEITH ANDREWS (*Director/Choreographer*): is especially excited to be back at Gateway after directing last years production of *Urinetown* and 2005's *The Full Monty*. He started at Gateway by performing in *The Music Man* and *Big: The Musical* as well as being assistant choreographer for the latter. Previously

Keith has directed the National Tours of *The Full Monty* and *Hello Muddah, Hello Faddah*. Recent credits include: *Pirates of Penzance* and *My Way, the Sinatra Tribute* at St. Michael's Playhouse, *Dirty Blonde* at the Barnstormers Theater, *Sweet Charity*, *Godspell*, *Pump Boys and Dinettes*, *Forever Plaid*, and many more. Keith choreographed the off-Broadway revival of *Hello Muddah...*, as well as productions of *Joseph...*, *Little Me*, and *Promises, Promises*, to name a few. As a performer, Keith has toured around the world with shows such as: *West Side Story*, *Seven Brides for Seven Brothers*, *Mame*, and *The Radio City Christmas Spectacular*. In educational theater, he associate directs and choreographs the student showcases at the American Musical and Dramatic Academy in NYC and has directed in the musical theater program at the USDAN Center for the Creative and Performing Arts here on Long Island. Thanks so much to Frank for his vision, patience and faith and to Robin and Paul for everything and then some.

The
BARN MUSEUM

Home of Long Island History
Special Exhibits

Second Largest Collection of Painted
Tinware in the United States

THE
POST-CROWELL
HOUSE 1833

A Fine Collection of
Period Furnishings

THURSDAYS, FRIDAYS & SATURDAYS, 1 TO 4:30PM.

Bellport-Brookhaven Historical Society



EXCHANGE SHOP Antiques & Decorative Accessories

Thurs., Fri., & Sat., 11A.M. - 5PM.
Consignments received Wednesdays, 10 A.M. to 12 Noon
(We encourage the donation of fine antiques which are fully tax deductible)

ANNUAL SUMMER GALA - Saturday, August 4, 2007
"History of Bellport, Then and Now"
Portraits and Village Scenes - 1880's-1920's

For Information, please call 776-7640

ALL LOCATED AT: 31 BELLPORT LANE, BELLPORT - 286-0888

Bellport CHOWDER HOUSE

In The Bellport Hotel
Built 1896



An Eating and Drinking Tradition

FULL MENU

FULL BAR

Open Daily For Lunch and Dinner
Seven Days A Week

Sunday - Thursday till 11:00 p.m. Friday & Saturday till Midnight

**SPECIALIZING IN FRESH LOCAL SEAFOOD
AT AFFORDABLE PRICES**

STEAKS - CHICKEN - PASTA

*Before and After the Show You'll Want to Meet and Eat At
THE CHOWDER HOUSE*

TAKEOUT

CATERING

19 Bellport Lane • Bellport Village • 286-2343

JEFF WAXMAN (*Musical Director*) has worked in New York as a musical director, arranger, composer, musician and producer for over 25 years. He owns Dancing Bull Music and Waxtrax Recording where he produces and composes music for television and film (commercials, television themes, documentaries, etc.) and for pop, rock, folk and country artists. Most recently Jeff was the orchestrator, vocal arranger and musical director for the new musical, *"Almost Heaven, Songs and Stories of John Denver"*, which made its world premiere recently at the Tony Award-winning Denver Center Theatre Company. He received a Drama Desk nomination for his orchestrations for the hit Off-Broadway Musical, *Woody Guthrie's American Song*. Jeff produced the Grammy nominated cast album of the Broadway Musical, *Doonesbury*, which he also arranged, conducted and musical directed. Other Broadway work includes: *Gorey Stories*, *The Cherry Orchard* at Lincoln Center and *Into The Light*. Jeff has also created original music for several Emmy Award winning video projects. Artists Jeff has produced appear on BMG, Sony, Casablanca/Polygram, MCA, Epic and various independent labels. Jeff has written, arranged and produced music for commercial children's educational products, including product for Sesame Street, Berlitz, Scholastic and many other publishers.

FRANK A. D'AGOSTINO (*Creator of "Cold As Ice" / Playwright, Composer / Lyricist*). Frank holds a Bachelor of Science in Marketing with a minor in Theatre from Siena College in Loudonville, New York and has written and produced many full length plays, musicals and cabaret shows throughout the United States. His nationally released album *"Moments"* was nominated for album of the year by the Manhattan Association of Cabaret's (M.A.C). He is a member of ASCAP and the Dramatist Guild. His list of musicals include: *Vivianna*, which is a modern day version of *La Traviata*, (2002 Perry Award nomination for outstanding production of a new musical), the Grand Theatre at the Producer's Club Theatres on West 44th Street. *My Heinous Life* finished a successful run at the William S. Buck Memorial Theatre in New Hope PA and The Eatontown Playhouse and Dramatist Guild, New York (2003 Perry Award nomination for outstanding original production of a new musical). His musical, *Cravings*, played at the Phillips Mill Playhouse in Pennsylvania and at the Kraine Theatre in New York City. Frank has also received stellar reviews for the musical revue entitled, *If The Boy Is Prettier Than You*, which played at Danny's Skylight Room, Judy's in

New York City and Odett's in New Hope PA. Frank is an accomplished figure skater and coach. He is a United States Figure Skating Association Gold Medalist and has skated to his own musical compositions at the United States Open in (1993) and (1994). Frank is a member of the Dramatist Guild, Inc., where he has appeared as a panelist and moderator several times discussing Playwriting and Producing. *Cold As Ice* is his latest musical and he is thrilled that tonight his worlds of figure skating and theatre will meld together for this first time performance. Thanks to Paul Allan and Robin Allan of the Gateway Playhouse, for taking on this new project. Also Tara Modlin, of Fireworks ICS for publicity / promotion. Jeff Waxman and Keith Andrews for their care and diligence. The cast and crew at Gateway for bringing the script to life. Special thanks to **Angelo Del Rossi** for his invaluable assistance and guidance.

TARA EVE MODLIN (*Associate Producer, On-ice Choreography, Skater Casting, Marketing*) is a former national competitive figure skater and current coach, originally from Great Neck, Long Island. Since she graduated from the University of Pennsylvania in 2000, she has become Founder and President of Fireworks ICS, a New York-based sports and entertainment marketing firm. Events that Tara has produced and marketed include "Stars, Stripes, and Skates ICEtravaganza" which has raised funds for The Heritage Foundation of 9/11. The foundation educates young Americans about the events of 9/11 and the heroic efforts that were shown by people around the world. The past five annual skating spectacles were presented with a who's who in the world of figure skating including Oksana Baiul, Nancy Kerrigan, Sasha Cohen, Johnny Weir, and many other well known entertainers. These events were presented at Madison Square Garden and Nassau Coliseum and have been televised nationally on NBC, Comcast's CN8, SportsNet New York, WABC, and other networks. Fireworks has also produced the Reckson Plaza Christmas Spectacular televised on CW11 and other major sporting events. Fireworks has also provided corporate hospitality and athlete representation at two Olympic Games. Tara is also Oksana Baiul's Personal Manager. Tara is thrilled to be part of the original production of *"Cold As Ice"* here at the Gateway Playhouse which she feels will take the world of ice skating to a new level. On behalf of Skating Professionals around the world Tara would like to personally thank Frank D'Agostino (her "Will")

for giving these skaters and actors an opportunity to create this new art form.

DEAN ANDERSON (*Playwright*) holds a Master of Arts in Theater and Communication from Idaho State University. He taught theater and speech for over twenty years at Tusculum College, ISU, and the University of Florida. He is a former Board Member of the Monmouth County Arts Council. He is on the Board of Directors of Monmouth Players in Red Bank, New Jersey. He has co-authored *My Heinous Life* with Frank D'Agostino and continues to act, direct, and write. Dean and Frank have worked together since 1994.

ROBIN JOY ALLAN (*Casting and Artistic Director*) has been the Casting Director at Gateway for the last twelve years. Four years ago, she became the Artistic Director at Gateway which includes not only several Manhattan excursions to cast all productions, but involves planning advertising strategies for all productions, hiring creative staff, designing season ads, posters and booklets, overseeing artistic aspects of each production, costumes, sets and wigs, overseeing Children's Theatre, beautifying the Gateway property from choosing paint colors for actor housing, to adding new perennial floral additions to the Gateway landscape. Prior to moving back home into the wonderland setting of her childhood, she did thrive in Corporate America, spending five years in Los Angeles, casting several TV pilots, MOW's and feature films. You'll find her name on the feature films; *Parenthood*, *When Harry Met Sally*, *Lord of the Flies*, *Side Out* and *Ghost*. Along with her Artistic and Casting Director duties, she is the force behind Gateway's Acting School Division, where she teaches the advanced classes. This is her most impassioned work. Her daughter Hayley, inspires her every day. She hopes her effort is good enough to honor her family, and their amazing effort all these years to bring theatre with integrity to Long Island.

AARON SPIVEY (*Lighting Designer*) Off-Broadway: *From My Hometown*, *4 Guys Named José*, *Golf: The Musical* and *Elle* with Alan Cumming. On Broadway: Aaron has served as the Associate or Assistant designer on several productions including all three parts of *The Coast of Utopia*, *Tarzan*, *Little Women*, *Glengarry Glen Ross*, and *The Pirate Queen*. Currently, Mr. Spivey is the associate designer for the new Broadway production of *Grease*. Other New York credits include, *From My Hometown*, and *Starmites2001* (Amas Musical Theater), *King Lear* (Aulis Collective), *Waiting for Godot*

(The Actors Institute), *The Naked Earth* and *The Life and Times of Ng-Chung Yin* (Yangtze Rep) and associate designer for *Chess: In Concert* at the New Amsterdam. Regional credits include include *4 Guys Named José* (Actors Playhouse), *Mame* (The Helen Hayes Performing Arts Center), *Little Shop of Horrors* and *Beautiful Dreamer* (Cherry County Playhouse), *The King and I* and *Joseph* (Carousel Dinner Theater), *Big River* and *Annie Get Your Gun* (Seacoast Repertory Theater.)

KELLY TIGHE (*Scenic Designer*) Off Broadway: *The Fantasticks*, *Almost Heaven*. Regional: *Aida*, *Cats*, *The Full Monty*, and *Jesus Christ Superstar* (Gateway Playhouse); *Beauty and the Beast*, *Grease*, *Titanic*, *The Who's Tommy*, *My Fair Lady* (Contra Costa Musical Theatre); *Annie*, *Kiss Me Kate*, *Joseph/Dreamcoat* (Ohio's Carousel Dinner Theater); *West Side Story*, *The Scarlet Pimpernel* (Diablo Light Opera Co.); *Around The World In 80 Days*, *The Pavilion*, *Picasso at the Lapin Agile* (Center Repertory Co.); *The Laramie Project*, *A Midsummer Nights Dream* (PPAS/ NYC). Mr. Tighe served as the resident Scenic designer for Western Michigan's Cherry County Playhouse (*The Music Man* starring William Katt and Josie DeGuzman, and the world premiere of *Will's Women* starring Amanda McBroom), as well as Center Rep in the San Francisco Bay Area. Television: "Sunday Night Woah!" (starring Mo Rocca) for Animal Planet as well as several spots for *Verizon*, *Kit Kat*, *Disney*, and *the Oxygen* network. Awards and recognitions: Northern California's "Shellie", Drama-Logue, and the S.F. Bay Area's Outer Critic's Circle. Kelly resides in New York City.

JIMMY JOHANSMEYER (*Costume Designer*) is happy to mark his Gateway Playhouse debut with *Cold As Ice*. He recently made his New York debut with Phil Hail's *Matthew Passion*. Other recent credits include: *Brighton Beach Memoirs* and *Murder on the Nile* at The Emelin Theatre in Mamaroneck and the world premiere of two new musicals, *Cinderella Skeleton* and *Oliver Twist* at the Downtown Cabaret Theatre in Bridgeport, CT. His work has also been seen at Cortland Repertory Theatre (NY), The Theatre Barn (NY), Gorilla Theatre (FL), Theatreworks New Milford (CT), Stamford Center for the Arts (CT), Arundel Barn Playhouse (ME), and on the mainstage of the Downtown Cabaret Theatre, where he continues his work as Wardrobe Supervisor and Resident Designer for the Children's Company. Special thanks to Bert for always being there with a smile.★

FEATURED PERFORMERS: THE FIGURE SKATING COMPANY

Never before has a book musical been written incorporating figure skating, and *Cold As Ice* is written by, about, and starring world-class skaters. The six lead performers enjoy successful competitive careers and appear in ice shows around the world, but there are different challenges playing a character and skating on a surface 1/32 the size of a typical ice arena. However, the *Cold As Ice* company couldn't be more excited by the opportunity to be part of a completely new, innovative project.

In January, Oksana Baiul (Maya) was asked by her manager to come into her office to read a script. "They said she's the one, and that's it – we went right into preproduction and promoting the play," Baiul said. Philip Deyesso (David) threw himself into the show wholeheartedly, he was inspired to start skating after seeing Baiul win the 1994 Olympic gold medal, and has appeared in regional musicals. "I was doing Footloose in Kansas when my friend forwarded me the audition notice. I thought, oh, this is my calling, sign me up now!" he said. "The timing was perfect for me, too" said Derrick Delmore (Josh), "I was thinking this might be my last year of competitive skating, and this would be a good transition into the world of acting."

Compared to a huge arena, the 35' x 40' stage ice is far more intimate and requires skaters (used to broad gestures designed to reach a crowd of thousands) to scale down their movements and increase their acting skills. "It took a while for me to become comfortable in my shoes," Baiul said, "People are sitting right there and will see you up close. This is a very different type of work, but I was looking for a project like this, I love challenges." Stephanie Rosenthal (Lindsay), who has worked with Baiul before and recently choreographed *Little Shop Of*



Horrors for Yale University thinks the show is great for the skating community. "I feel skating is kind of stuck artistically and it is exciting to be blended with some of the other arts," she said.

Lance Vipond (Dean), said of the playwright, Frank D'Agostino, "You don't come across

someone like that often, an author of musicals who has a background in skating. I think if someone who hadn't been a skater wrote it, it wouldn't have the heart it does." Vipond is a choreographer who has created programs for Canadian National Champion Jamie Salé and 2006 Junior National Champion Joey Russell. Working with Baiul has been a wonderful experience for the skaters as well. Erica Starkman (Chelsea) said, "She has a lot of insight on how to connect with the audience and has helped me a lot." Vipond agrees, saying, "She tells a story on ice like no one else." Baiul, though, is modest. "It is a team effort," she said, "You give to them, and they give to you." This *Cold As Ice* team is proud to give this show to Gateway Playhouse patrons.★

Experience
DONALDSONS

Cathy Kelleher - Subaru Sales

"The Smart Choice"

5700 Sunrise Highway, Sayville, NY 11782
Tel: 631.567.6400 Direct: 631.590.5245
Fax: 631.567.8400
cathysubaru@aol.com



THE GATEWAY WINDMILL

One of the most recognizable features of the Gateway property is the wisteria-covered wooden windmill that stands next to the office building. The exact origins of the structure are lost to time; it was probably built between 1868 when the house that is now the office was built, and 1884 when the Mott family acquired the former Osborne estate. The brick building attached to it was built first and the windmill went up around it. Gateway's founder, Harry Pomeran, along with his wife Libby and their children, Sally, David and Ruth, bought the property in the early 1940's and began operating it as a hotel. "We never called it a windmill, it was always 'the pump house', because under the stairs there is a huge artesian well," executive producer Ruth Allan remembers, "It pumped all the property's water and it was known as the best water in Bellport."

The family made the hotel as self-sufficient as possible, raising chickens, and growing fruit and vegetables. The Pump House became something of

a fruit cellar, where Libby stored all her canned goods. "During the 1940's we had 200 chickens, and because we didn't have hotel guests in the winter, Mom preserved the eggs in brine. She also made jelly, and pickled pears from the pear tree. For us, the pump house was also my Dad's toolshed," said Ruth. The local wildlife found uses for the building as well - a family of white owls took up residence in the top of the tower.

On September 15, 1944, the Great Atlantic Hurricane made land for a second time on the East Coast, slamming into Long Island with 85 mph winds. The windmill's wheel fins were the only casualties of the storm on the Gateway property. "They were found as far away as Head of the Neck Road," said Ruth, "That night we stayed up praying and not one of those fins came down on anyone's house." Harry Pomeran had installed an electric pump by then, so the fins were not replaced. Harry also reinforced the interior corners of the tower with steel.

The building became a landmark, being the tallest structure around, it could be seen coming in from Bellport Bay. "It would be easy just to take it down, but it would be very hard not to have it. That, the barn, and the old wing of the house, that's Gateway. It's important to preserve it because of its antiquity," declared Ruth.

Over the years, age and weather took their toll on the windmill. The top of the structure had been steadily leaning at the rate of 2-3 degrees a year, but by this past autumn, the pitch had worsened to where the Allan family began to worry that a bad nor'easter would blow it off. The Bellport Fire Dept was called in to lend the services of their snorkel truck to temporarily shore up the building. Two weeks later a crane was hired to remove the top, and the family decided to begin restoration.

Architects Keith DeLucia from J&B Designs and Jack Rosebery from Rosebery Architectural Studio,



Medford firms specializing in historic buildings, have created a design that will bring the windmill back to its 1940 look including the roof, picket fence around the top, wheel and fins. Paul plans for the restored windmill to be functional, "It should generate enough electricity to power itself, its lighting, etc," he said. Gateway Playhouse will offset the restoration costs with a special event, "The Summer Wind" a concert that will feature songs and singers from Gateway's best-loved productions.

What everyone associates most with the windmill is the wisteria that grows over it, probably planted in the 1880's. Every year, the Allans, the Gateway staff, and patrons eagerly look forward to its blooming. "We've had to cut it back several times because it gets so heavy," said Ruth, "but it always comes back". As will the windmill.★

JOE

281-0376

SHIRLEY SLEEP SHOPPE

618 Montauk Highway • Shirley, NY 11967



Complete Line of Conventional,
Waterbeds & Futons



is the official
landscaper of

Gateway Playhouse

all work done by owner

Nicholas J. Harding

631-475-0636

Swan Bakery

All Occasion Cakes

Guy Gagliano

The Official Bakery of Gateway Playhouse

15 South Country Rd., East Patchogue, NY 11772

(631) 475-9626

The Summer Wind

**A benefit concert to save the Gateway Windmill
Featuring songs and singers from Gateway's
best-loved productions!**

**SATURDAY, SEPTEMBER 1ST -
Special Performances
4:00pm and 6:30pm**

**The second show will include
a cocktail hour and buffet
\$50-\$125**

**Call 631-286-1133
for more information**



GATEWAY PLAYHOUSE STAFF

ADMINISTRATIVE

Executive Producer Ruth Allan
 Producer Paul Allan
 Associate Producer Jeff Bellante
 General Manager Gale Edwards
 Company Manager Erin Kraus
 Publicist Linda Unger
 Assistant to the Producer Keith Llewellyn
 Assistant Company Manager Aaron Kelley
 Musical Contractor Lou Gallo
 Music Librarian Joe LoSchiavo
 Administrative Assistant Sarah Good

ARTISTIC

Artistic/Casting Director Robin Joy Allan
 Director/Choreographer Keith Andrews
 Musical Director Jeff Waxman
 Scenic Designer Kelly Tighe
 Lighting Designer Brian Loesch
 Sound Design Cody Spencer
 Costume Design Jimmy Johansmeyer
 Associate Casting/Artistic Director Michael Baker
 Assistant Musical Director Brendan Whiting
 Sound Consultant Dominick Sack
 Production Photographer Jeff Bellante

BOX OFFICE

Box Office Manager Laurie Parr
 Director of Group Sales Annmarie Allan
 House Managers Joanne Famiglietti
 Box Office Staff Nadine Hazard, James O'Donnell,
 Brian Strumwasser

PRODUCTION

Production Coordinator Tara Modlin
 Production Manager Brian Loesch
 Costume Coordinator Marianne Dominy
 Associate Technical Director Spencer Padilla
 Lighting Supervisor Patrick Johnston
 Associate Scenic Designer/Props Master Brittany Fahner
 Scenic Painter Diana Wright
 Assistant Stage Manager Shannon O'Connor
 Assistant Master Electrician Justin Hoffman
 Assistant Props Masters Jennifer Blazek, Michelle Quartin
 CATALYST Programmer John Bryant
 Video Content Design Spencer Padilla
 Technicians Albert Altovila, Sheena Crespo, Ricky Haug,
 Corey Kloos, Linda Luscombe, Cade Spencer
 Wardrobe Patrick Herb, Megan Moore
 Interns Jason Nathaniel Adams, Sarah Frankel,
 Olivia Gagne, Ryan Lewis, Jennifer Perkins,
 Harrison Santiago, Carolyn Scaringello, Brendan Smith

FACILITIES

Facilities Manager Don Harrison
 Cleaning Contractor Fiori Enterprises, Inc.
 Grounds Maintenance HTM Landscaping Company
 House Staff Brendan Dooling, Chelsea Mojallali, Lauren Parr
 General Counsel Ann L. Nowak & Associates

A NOTICE ABOUT PARKING

We strongly encourage our patrons to always park on Gateway grounds. Parking is no longer allowed on Maplewood Drive north of the back Gateway exit. Parking is also prohibited on the east side of the street (Gateway side). Observe the No Parking signs.

The Village of Bellport has advised us that cars parked in these areas **will be ticketed**. Please park on the west side of the street, opposite the Gateway fence, between the back exit and South Country Road.

We appreciate your cooperation in making your visit to Gateway as pleasant as possible.

Beach House Restaurant



Lunch & Dinner - Indoor/Outdoor
 363 Grove Ave. Patchogue 631-758-3524
 (closed Mondays)

Merckling Family Chiropractic, P.C.

DR. JOSEPH R. MERCKLING



16-2 Station Road
 Bellport, NY 11713
 Telephone: (631) 286-2300
 Fax: (631) 286-4615
 bellportfamilychiropractic.com

Office Hours By Appointment

TR₁O

at the
Holbrook
Country
Club

At Work, At Play or After The Play

Excellent ▶ Located in Holbrook,
Just Minutes From
Gateway Playhouse.

Exquisite ▶ Enjoy lunch or dinner at
Frederick & Co. Restaurant.

Elegant ▶ Schedule your next affair
at Trio's refurbished
catering facility.

700 Patchogue-Holbrook Road
 Holbrook, New York 11741

(631) 585-4433

www.triofinefood.com

Catering ▼ Fine Dining ▼ Golf



New & Used Golf Equipment

BUY, SELL & TRADE

Computerized Club Fitting
Regripping

**14 Regrips for price of 10
with this ad**
(Offer expires 10/31/07)

Open 7 Days a Week

27 South Ocean Avenue, Patchogue N.Y. 11772

631-291-9624

www.uniquegolfshop.com



a charmed life



special edition charms
now available

ROSE
JEWELERS
CELEBRATING LIFE'S EVENTS SINCE 1945

Patchogue, 74 E. Main Street 631-475-1441
Southampton, 57 Main Street 631-283-5757

**How do you spell
great banking?**



The Smart Package

- ▶ **Interest Checking** Free with Direct Deposit
- ▶ Premium **Money Market** Savings Account with no monthly maintenance fees
- ▶ **And more...!**

Ask an HSBC representative how to
open up a Smart Package today!

Bellport Office
20 Station Road
Bellport, NY 11713
631-286-3800

Patchogue Office
325 E. Main St.
Patchogue, NY 11772
631-475-2600

Mastic Office
1718 Montauk Highway, Mastic, NY 11950 • 631-281-6400

HSBC
The world's local bank

us.hsbc.com 1-800-975-HSBC

Issued by HSBC Bank USA ©HSBC Bank USA 2006

**You Can't
Hurry
Love...**

But hurry to
the Long Island Museum!



OPENS JULY 21

Reflections:

The Mary Wilson Supreme
Legacy Collection

This entertaining exhibition traces the
history of The Supremes, from their
beginnings as The Primettes through
their blockbuster Motown career.
Learn about Motown's impact on the
Civil Rights movement. Plus 9 land-
scaped acres in historic Stony Brook

Highlights include:

- 50 original costumes worn by The Supremes
- Motown music & videos
- Visitor's stage & dressing room

The Long Island Museum

1200 Rte. 25A • Stony Brook, NY
(631) 751-0066

www.longislandmuseum.org

Make a Date with History!

H.B. MILLWORK INC.

Custom Stairs • Rails • Windows • Doors • Mouldings • Fireplace Mantels



www.hbmillwork.com

494 Long Island Avenue
& Rte. 112 in Medford
(Exit 64 off the LIE South)
631-289-8086

Swezey

FUEL CO., INC. - EST. 1919

**Suffolk's Largest Family
Owned Oil Company**

- Automatic Oil Delivery Service
- 24-Hour Emergency Service
- Budget Plans That Pay You Interest
- Expert Installation Of Boilers,
Burners, Hot Water Heaters &
Pool Heaters



475-0270

51 RIDER AVE., PATCHOGUE

Searles GRAPHICS, INC.



DESIGN
Innovation

PRE-PRESS
Precision

MARKETING
Solutions

PRINTING
Versatility

56 Old Dock Road | Yaphank NY 11980

† 631.345.2202 | f 631.345.0975 | www.searlesgraphics.com



*Now enrolling for the
Summer Sessions!*

ACTING AND MUSICAL THEATRE TRAINING

all levels of acting for all ages thru adult



GATEWAY ACTING SCHOOL

LEARN FROM THE PROFESSIONALS!

286-9014

The Port Jefferson Country Club at Harbor Hill's Lombardi's on the Sound



*Enjoy breathtaking panoramic
views of the Long Island Sound as
you experience the perfection and class
that the Lombardi Family is famous for.*

*Lombardi's on the Sound caters to one wedding at a time. Our attention to detail
is second to none. Find out why... "Reputation is Everything"*

44 Fairway Drive, Port Jefferson, New York 11777

631-473-1440 • www.lombardisonthesound.com

2007 SEASON

MY WAY JUNE 20 - JULY 8

A Musical Tribute to Frank Sinatra

DREAMGIRLS JULY 11 - JULY 28

LIVE! On Stage at the Patchogue Theatre

**GENTLEMEN PREFER BLONDES
AUGUST 1 - AUGUST 25**

"A kiss on the hand may be quite Continental, but diamonds are a girl's best friend."

**CIRQUE DREAMS JUNGLE FANTASY
AUGUST 23 - SEPTEMBER 8**

at the Patchogue Theatre "Acrobatic audacity and limitless imagination all in one" — New York Daily News

**URBAN COWBOY
SEPTEMBER 12 - 29**

It's a line dancin', fine-romancin', heart-breakin', boot-scootin', raw-hidin', bull-ridin', good time.



ALL TICKETS ON SALE NOW!

**Gateway
PLAYHOUSE**

631-286-1133 • 1-888-4TIXNOW

WWW.GATEWAYPLAYHOUSE.COM

We know why you fly **American Airlines**
Official Airline for the Gateway Playhouse

CHILDREN'S THEATER



JULY 6

**TALES FROM THE FOREST:
HANSEL & GRETEL AND GOLDILOCKS &
THE THREE BEARS**

Yates Musical Theatre

Friday - 10:30am and 1pm in Bellport



JULY 21

PINOCCHIO Yates Musical Theatre

Saturday - 10:30am and 1pm

at Patchogue Theatre



JULY 14

SLEEPING BEAUTY

Yates Musical Theatre

Saturday - 10:30am and 1pm
at Patchogue Theatre



JULY 27

**JIM WEST'S
DINOSAURS**

Theatreworks USA

Friday - 10:30am and 1pm
at Patchogue Theatre



AUGUST 10, 11, 17, 18, 24, 25

**CHARLIE AND
THE CHOCOLATE
FACTORY**

Gateway Playhouse Production
all at 10:30am in Bellport

Gateway's Children's Theatre is the perfect backdrop for customized birthday parties and camp excursions.

Tickets for all Children's Theater Shows on Sale Now!

1.888.484.9669

ALL seats \$9.00 RESERVED SEATING **631.286.1133 1.888.4TIXNOW**

Sorry, Children aged 2 or older only. No infants please, as they disturb others from enjoying the performance.
Every child, "out of the womb" must enter with a purchased ticket.

*Shows subject to change without notice



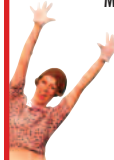
**GATEWAY PLAYHOUSE would like to thank our volunteer staff
for their dedication and support. IT IS MUCH APPRECIATED.**

Marie Rachek - Head Usher

Ushers — Al Aberg, Missy Atchue, Carmela Aiosa, Joel Barak, Olga Belz, Anne Burke, Johanna Digiovanni, Betty Entress, Joyce Gambino, Linda Good, Marian Harrison, Peter Haustein, Joanne Hittner, Mary Lanier, Jeanette Margiotta, Connie Merced, Sue Nemet, Peter Pernice, Linda Randolph, Sandy Reifel, Allan Ritchie, Charlene Sasto, Terry Seng, Rosalind Senie, Carol Weinstein, Pat Yurdigo

IF YOU WOULD LIKE TO JOIN OUR VOLUNTEER STAFF CALL 286-0555

**Become part of the Gateway Family
and receive complimentary tickets to our shows!**



American Airlines, American Eagle, AA.com and We know why you fly are marks of American Airlines, Inc. American Eagle is American's regional airline affiliate.



Paradise isn't lost. We fly there every day.

We know the way to 35 destinations on 25 unforgettable islands in the Caribbean and The Bahamas. Each and every one a paradise found. No one offers more service from the U.S. than American and American Eagle. Book your next trip online at AA.com or call us at 1-800-433-7300.

We know why you fly® American Airlines®
AA.com 

