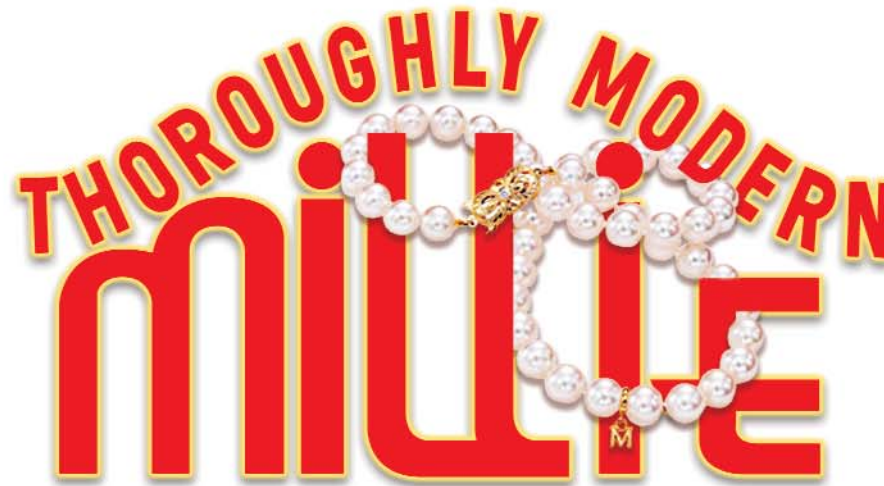


PLAYBILL

S U M M E R 2 0 0 6



57th SEASON
Gateway
PLAYHOUSE

JULY 5 - JULY 22

"Although the theater is **not** life,
it is composed of fragments or
imitations of life, and people on **both**
sides of the footlight have to **unite**
to make the fragments **whole** and the
imitations **genuine**." - Brooks Atkinson

W^m. J. O'Neill

Sales Exchange Co., Inc.
Jewelers and Collateral Loanbrokers

*Classic and
Contemporary*

*Platinum
and Gold*

*Jewelry designs that will
excite your senses.*



One East Main St., Patchogue 631.289.9899 www.wmjoneills.com

Mention this ad for 10% discount on purchase



The Pine Grove Inn has served generations of guests since its establishment in 1910. Our seasonal menus emphasize prime beef, fresh local seafood and the traditional German fare which made us famous. The Palm Bar & outdoor patio overlooks the Swan River.

\$6 Martinis

Tuesday through Friday
from 4-7 at the bar

Enjoy Live Music Thursday through Saturday

*Open for Lunch and Dinner Wednesday through Sunday
Available for Parties Monday & Tuesday*

*Choose us for your next special event –
our catering department will be pleased
to work with you to design your affair*



**Wednesday
Lobsterfest**

**Thursday
Prime Rib Night**



Chapel Avenue & First St., Patchogue, NY 11772 • 631.475.9843
www.pinegroveinn.com

**PRESENT THIS VOUCHER FOR
\$5 OFF LUNCH**

on checks of \$30 or more

Expires July 28, 2006. Reservations suggested.
May not be combined with any other promotional offer.

**PRESENT THIS VOUCHER FOR
\$10 OFF DINNER**

on checks of \$60 or more

Expires July 28, 2006. Reservations suggested.
May not be combined with any other promotional offer.

*Specialists in
Quality & Service*

*Family Owned &
Operated Since 1976*



CARPET EXPRESS

1135 Montauk Hwy., Mastic • 399-1890/653-RUGS
721 Rte. 25A (next to Personal Fitness), Rocky Point • 631-744-1810

Open 7 Days

We love it when you love what you're walking on.

AREA RUGS TO GO

Find us on the web at
arearugstogo.com

**100% Price Match Guarantee
Free Shipping**



Restaurant

*European-style Desserts
and Espresso Drinks*

Open Late 6 Nights per Week

Signature Martini Bar

Outdoor Café Seating

*Live Jazz
Every Thursday &
Late Night Friday*

Zagat Rated Excellent 2001-2006

14 Station Road, Bellport Village
286-3300

THE HARBOR SIDE

"Incomparable Seafood Restaurant"

Open 7 Days a Week
at 11:30 a.m.

All Major Credit
Cards Accepted.

Complete Dinners
Everyday.



Highly Recommended:

* * *

Newsday

Daily News

NY Post

The Practical Gourmet

Special Rates for Theatre
Groups from 20 to 125.

Call for more information.

Complete Lunches*

Served Mon. - Sat.
11:30 a.m. - 3:30 p.m.
Starting at \$8.50

Complete Early Bird Specials*

Served Mon. - Fri. 3:00 p.m. - 6:00 p.m.
Sat. 3:00 p.m. - 5:45 p.m.
Starting at \$14.95

Sunday Specials

Includes: Soup or Salad,
Potato, Vegetable, Dessert &
Coffee. 11:30 a.m. - 4:00 p.m.
Starting at \$9.95

*Above specials not available for
groups of 15 or more on holidays.
Prices subject to change.

Complete Dinners starting at \$18.95 includes Appetizer, Soup or Salad,
Potato, Vegetable, Dessert & Coffee

503 E. Main Street, Patchogue, New York - Located on the corner of E. Main St. (27A) and Phyllis Dr.
(631) 654-9290

Before or After The Show

Late Night Dinner • Dessert and Coffee

All Baking
Done On
Premises



Breakfast,
Lunch and
Dinner

Open 7 Days
6:00 AM - 2:00 AM

Daily Specials

ROYAL OAK

Diner - Restaurant

Station Road and Sunrise Highway - Bellport, New York 11713

TEL. (631) 286-5757

A LETTER FROM THE PRODUCER

Welcome back to the 2006 season,

where the temperature on our stage continues to rise in sync with the summer outside. We're raising the heat as we launch our third show of the season, continuing to give you the finest of Broadway performers, professional musicians, and dazzling technical wizardry to rival any 4th of July fireworks show.

Fresh off *The Fantasticks*, in which we re-invented the Off-Broadway favorite to rousing popular and critical acclaim (it was hailed as "one of the most unforgettable shows in Gateway history"), Gateway's going grand with *Thoroughly Modern Millie*, our first show this season at the beautiful Patchogue Theatre. As you'll remember from our past seasons, being at Patchogue allows us to accomplish technical feats like a flying helicopter on stage in *Miss Saigon*, a giant turntable and revolving sand-boxes in *Aida*, and for *Millie*... well, you'll see. We've pulled out all the stops to create a show that we hope will please every member of your family.

Speaking of family, July also brings us to the start of our Children's Theatre season. With a show every weekend through the rest of the summer, we're keeping busy providing you with quality, enriching entertainment that the entire family can enjoy. We've also created a new way for you to enjoy more shows (with more savings), so don't miss out!

We're committed to providing you with top-notch musical theatre that you just can't see anywhere else on Long Island. That's our commitment, and we thank you for yours.

Paul Allan



TR₁O

at the
Holbrook
Country
Club



At Work, At Play or After The Play

Excellent ▶ Located in Holbrook,
Just Minutes From
Gateway Playhouse.

Exquisite ▶ Enjoy lunch or dinner at
Frederick & Co. Restaurant.

Elegant ▶ Schedule your next affair
at Trio's refurbished
catering facility.

700 Patchogue-Holbrook Road
Holbrook, New York 11741

(631) 585-4433

www.triofinefood.com

Catering ▼ Fine Dining ▼ Golf

Gateway
PLAYHOUSE

Presents

KRISTIN MALONEY

in

THOROUGHLY MODERN MILLIE

Book by
RICHARD MORRIS
and **DICK SCANLAN**

New Music by
JEANINE TESORI

New Lyrics by
DICK SCANLAN

Original Story and Screenplay by
RICHARD MORRIS
For the Universal Pictures Film

Originally Produced for Broadway by
Michael Leavitt Fox Theatricals Hal Luftig Stewart F. Lane James L. Nederlander
Independent Presenters Network L. Mages/M. Glick Berinstein/Manocherian/Dramatic Forces
John York Noble and Whoopi Goldberg

with

GARY LINDEMANN

CRISTIN MORTENSON

NICK SPANGLER

and

SUSAN J. JACKS
CHARLIE PARKER

TINA JOHNSON

KELVIN MOON LOH
ADRIAN PEÑA

Producer

PAUL ALLAN

Associate Producer
JEFF BELLANTE

Artistic Director

ROBIN JOY ALLAN

General Manager
GALE EDWARDS

Production Manager
BRIAN LOESCH

Company Manager
ERIN KRAUS

Production Stage Manager
JOVON E. SHUCK

Costume Coordinator
MARIANNE DOMINY

Lighting Design
MARCIA MADEIRA

Scenic Design
KELLY TIGHE

Costume Designer
NANCY MISSIMI

Musical Direction by
FRED BARTON

Choreographed by
MARY GIATTINO

Directed by
JOHN MACINNIS

Thoroughly Modern Millie is presented by special arrangement with Music Theatre International.
421 West 54th Street, New York, NY 10019

CAST OF CHARACTERS

(in order of appearance)

Millie Dillmount.....KRISTIN MALONEY*
 Jimmy SmithNICK SPANGLER
 RuthKAREN HYLAND*
 GloriaLINDSEY CLAYTON
 RitaSIERRA SCOTT
 AliceABBIE BRADY
 CoraMELISSA SYBIL
 LucilleKATY WOOD
 Ethel PeasANNA REBY
 Mrs. Meers.....SUSAN J. JACKS*
 Miss Dorothy BrownCRISTIN MORTENSON*
 Ching HoKELVIN MOON LOH
 Bun Foo.....ADRIAN PEÑA
 Miss Flannery.....TINA JOHNSON*
 Mr. Trevor GraydonGARY LINDEMANN*
 Speed TappistsCRAIG BLAKE,
 ANDREW BLACK

The Pearl Lady.....MELISSA SYBIL
 The LetchFREDDIE KIMMEL*
 PolicemanANDREW BLACK*
 Muzzy van HossmereCHARLIE PARKER*
 George GershwinCRAIG BLAKE
 Dorothy Parker.....SIERRA SCOTT
 RodneyANDREW BLACK*
 KennethFREDDIE KIMMEL*
 DishwasherFREDDIE KIMMEL*
 Muzzy's BoysCRAIG BLAKE, ANDREW BLACK*,
 SCOT ALLAN, JOSEPH CULLINANE,
 ERIC JACKSON, IAN LIBERTO
 Daphne.....ABBIE BRADY
 DexterANDREW BLACK*
 MathildeMELISSA SYBIL
 New Modern.....SIERRA SCOTT

ENSEMBLE

SCOT ALLAN, ANDREW BLACK*, CRAIG BLAKE, ABBIE BRADY, LINDSEY CLAYTON,
 JOSEPH CULLINANE, KAREN HYLAND*, ERIC JACKSON, FREDDIE KIMMEL*,
 IAN LIBERTO, ANNA REBY, SIERRA SCOTT, MELISSA SYBIL, KATY WOOD

UNDERSTUDIES

Millie Dillmount.....KAREN HYLAND*
 Jimmy Smith.....FREDDIE KIMMEL*
 Mrs. MeersLINDSEY CLAYTON
 Miss Dorothy BrownSIERRA SCOTT

Miss FlanneryANNA REBY
 Mr. Trevor GraydonANDREW BLACK*
 Muzzy van HossmereLINDSEY CLAYTON

MUSICIANS

Piano/ConductorFRED BARTON
 Trumpet IJOSEPH BOARDMAN
 Trumpet IIRICH CRUZ
 Trombone.....ALEX SINIAVSKI
 Reed IMARK GATZ

Reed IILOU GALLO
 Reed IIIMITCHELL KAMEN
 KeyboardBRENDON WHITING
 BassCATHERINE O'MALLEY
 DrumsGREGG MONTEITH



SCOT ALLAN



ANDREW BLACK



CRAIG BLAKE



ABBIE BRADY



LINDSEY CLAYTON



JOSEPH CULLINANE



KAREN HYLAND



SUSAN J. JACKS



ERIC JACKSON



TINA JOHNSON



FREDDIE KIMMEL



IAN LIBERTO



GARY LINDEMANN



KELVIN MOON LOH



KRISTIN MALONEY



CRISTIN MORTENSON



CHARLIE PARKER



ADRIAN PEÑA



ANNA REBY



SIERRA SCOTT



NICK SPANGLER



MELISSA SYBIL



KATY WOOD

La Margherita

The Original Brick Oven Pizza

Theatre Groups Welcome

Complimentary Appetizer with your lunch or dinner entree
when you present your show tickets

1229 Station Road, Medford • 924-0048 Fax 924-0094



The Musicians employed in this production are members of the American Federation of Musicians.



*Actors employed in this production are members of Actors' Equity Association, the union of Professional Actors and Stage Managers in the United States.



The Director/Choreographer is a member of the Society of Stage Directors and Choreographers, Inc., an independent national labor union.

ROE AGENCY INC.

Insurance Since 1898

Personal Insurance
Commercial Insurance
Property, Casualty
Life
Health
Financial Services

♦ 125 East Main Street ♦
 ♦ Patchogue, New York 11772 ♦
 Phone: 631.475.4000
 Fax: 631.475.7648

Old Inlet Inn



Fine Dining Since 1980

Dinners from 5:00 p.m.
 Sunday Brunch 12 - 3:00 p.m.
 Sunday Dinner 5 - 9:00 p.m.
 Closed Mondays

Ten Minutes From
 The Beautifully Renovated
 Patchogue Theater

Piano Bar Fri. & Sat. 9:00 p.m. - 1 a.m.

Walter A. Roe, Proprietor

108 So. Country Road, Bellport
286-2650

10% Entrée Discount
 with Theatre Tickets

MUSICAL NUMBERS

ACT I

"Not for the Life of Me"Millie
 "Thoroughly Modern Millie"Millie, Moderns
 "How the Other Half Lives"Millie, Miss Dorothy
 "Not for the Life of Me (Reprise)"Ching Ho, Bun Foo
 "The Speed Test"Mr. Graydon, Millie, Miss Flannery, Ensemble
 "They Don't Know"Mrs. Meers
 "The Nutty Cracker Suite"Jimmy, Millie, Miss Dorothy, Ensemble
 "What Do I Need With Love"Jimmy
 "Only in New York"Muzzy
 "Jimmy"Millie

INTERMISSION

ACT II

"Forget About the Boy"Millie, Miss Flannery, Ensemble
 "Ah! Sweet Mystery of Life/I'm Falling in Love with Someone"Mr. Graydon, Miss Dorothy
 "I Turned the Corner"Jimmy, Millie
 "Falling in Love (Reprise)"Millie, Jimmy, Mr. Graydon, Miss Dorothy
 "Muqin"Mrs. Meers, Bun Foo, Ching Ho
 "Long as I'm Here with You"Muzzy, Millie, Muzzy's Boys
 "Gimme Gimme"Millie
 "The Speed Test (Reprise)"Millie, Mr. Graydon, Muzzy, Jimmy
 "Ah! Sweet Mystery (Reprise)"Miss Dorothy, Ching Ho
 "Finale"Jimmy, Miss Dorothy, Moderns

Playbill Designed and Printed by Searles Graphics, Inc.

WARNING – The photographing or sound recording of any performance is strictly prohibited. Gateway Playhouse offers a wireless sound enhancement system for the hearing impaired. Inquire at the box office for more information.

FIRE NOTICE — The exit indicated by a red light and sign nearest to the seat you occupy, is the shortest route to the outside. In the event of fire or other emergency, please do NOT run. WALK to that Exit. However, under normal circumstances, when leaving the Theatre, use the center rear exits. SMOKING is prohibited in the BUILDING, as required by the Suffolk County NO SMOKING Ordinance. Smoking in any area designated "No Smoking" renders the offenders subject to a fine, or imprisonment, or both.



Landscaping Service
Design • Patios • Ponds

ROGER MAY
(631) 286-0941 • P.O. Box 652 • Bellport, N.Y. 11713

www.theoar.com



Enjoy Live Music Wednesday thru Sunday Evenings
 Open for Lunch & Dinner 7 Days a Week

Located on the Patchogue River - 264 West Avenue, Patchogue • 654-8266

Inquire
 about our
*Dinner
 Cruises*

**THE BANK OF
 NEW YORK**
 LONG ISLAND REGION

24-hour ATM

32 Station Road, Bellport,
 New York 11713

(631) 286-4200

Member FDIC 1986 The Bank of New York

Frank R. Egan, DDS, PC
 Certified, American Board of Orthodontics



Hospital Road
 Professional Center
 250 Patchogue-Yaphank
 Road - Suite 14
 East Patchogue, NY 11772
 (631) 289-3990

www.TeethOnTheMove.com

SCOT ALLAN (*Ensemble*) is thoroughly excited to be back on the Gateway Stage after appearing in last season's *Evita* and *42nd Street*. National Tour credits: *Thoroughly Modern Millie*, *Grease!* Starring Frankie Avalon. Regional credits include: *Footloose*, *A Chorus Line*, *A Christmas Carol* (McCarter Theater). Originally from Boston, Scot holds a BFA from Shenandoah Conservatory. Many thanks to Robin and especially Mary; where would I be without you?

ANDREW BLACK (*Ensemble/u/s Trevor/Dance Captain*) has performed from the stage of Carnegie Hall to the streets of Tokyo's DisneySea. Favorite credits include: First National Tour of *42nd Street* (Bert Barry/Pat Denning u/s), *White Christmas* (Swing), *Singing in the Rain* (Voice Coach u/s and DC) at the Carousel Dinner Theater and *Sugar* (Jerry/Joe u/s) last season here at the Gateway Playhouse.

CRAIG BLAKE (*Ensemble/George Gershwin*) comes to Gateway Playhouse straight from the national tour of *Thoroughly Modern Millie*. He

has also been on the road with Frankie Avalon in the national tour of *Grease*. Favorite credits include: Bobby Child (*Crazy for You*) and Wayne Frake (*State Fair*). Craig is looking forward to a great summer here and sends love to his parents. O.P.

ABBIE BRADY (*Ensemble/Alice*) Gateway Playhouse debut! National tour: *Oklahoma!* 1st National (Gertie Cummings), Hawaiian tour of *A Chorus Line* (Kristine), Regional: North Carolina Theatre, *A Chorus Line* (Judy Turner), *West Side Story* (Teresita), *Funny Girl* and *Mame* with Loretta Swit, Arts Center of Hilton Head, *Beauty and the Beast* (Silly Girl, and Babette US). Appearances include: *Star Search*, performances with Judy Collins and Jeff Foxworthy. Graduated from UNC-Chapel Hill. For my parents, sisters and niece Emma! Thank you Lord for all your blessings.

LINDSEY CLAYTON (*Ensemble/Gloria/u/s Mrs. Meers/u/s Muzzy*) couldn't be happier to join the Gateway family for the first time! National Tours: *Gentlemen Prefer Blondes* (Dorothy Shaw), *Grease*, starring Frankie Avalon (performed Marty, Patty and Cha Cha!) and *My One and Only*. Regional: *Beauty and the Beast* (Babette), *A Chorus Line* (Bebe), *Chicago* (u/s Velma), *Godspell* (Sonia) and *Crazy For You* (Patsy). Endless love and thanks to family, friends and Timmy.

JOSEPH CULLINANE (*Ensemble*) is thrilled to return to the Gateway Playhouse this summer, after previously being seen in *42nd Street* last year. A graduate of The American Musical and Dramatic Academy, his recent credits include *The Music Man* (La Comedia Dinner Theatre), *A*

Chorus Line, *La Cage Aux Folles* (Cohoes Music Hall) and *Cinderella* (Paper Mill Playhouse). Many thanks to Robin, Mary and everyone at Gateway for inviting him back, my family in Boston and Corey for knowing the entire score to *Millie*.

KAREN HYLAND (*Ensemble/Ruth/u/s Millie*) is thrilled to be returning to Gateway after performing in the spectacular *Holiday Spectacular!!* Recent credits include, *A Funny Thing Happened on the Way to the Forum* (Gemini) at Repertory Theatre of St Louis and Cincinnati Playhouse in the Park, *The Radio City Christmas Show* (Green Polar Bear/Barbie), European Tour of *Grease* (Patty), National Tour of *Joseph...* (Wife), Atlantic City Company of *42nd Street* (Phyllis), and *Anything Goes* (Charity). Much thanks to Robin, and everyone at Gateway! Enjoy the drummer!!! He's really good!!!

SUSAN J. JACKS (*Mrs. Meers*) Susan's return to Gateway (after making her Playhouse debut in *Oliver* earlier this season) reunites her with the glorious Fred Barton, with whom she worked Off-Broadway in *Forbidden Broadway*. Other Off-Broadway credits include *Nunsense* and York Theatre's *Theda Bara and the Frontier Rabbi*. Last year, she toured nationally in *Doctor Dolittle* and made her Goodspeed debut in *Flight of the Lawnchair Man*, which she will be repeating in this fall's New York Music Theatre Festival. Susan has performed in Europe, Scandinavia, Asia and South America, and she has done many shows in regional and stock theatres (*Noises Off* and *Broadway Bound* are two favorites). If you don't blink, you can see her as Tammy the Televangelist in Spike Lee's *Crooklyn*. Susan has been hap-

pily married for all of two years to the sexy and talented Nick Ruggeri.

ERIC JACKSON (*Ensemble*) is excited to be performing at the Gateway Playhouse. He was previously seen as Mereb in Westchester Broadway's *Aida*. Broadway: *Thoroughly Modern Millie*. Other credits include: *Chicago* (National Tour), *Ragtime* (National Tour), *Finian's Rainbow* (Irish Repertory, Westport Playhouse), *Dreamgirls* (PCLO), *Kiss Me Kate* (Weston Playhouse, Westchester Broadway), *My Fair Lady* (Paper Mill Playhouse). B.F.A., University of Michigan.

TINA JOHNSON (*Mrs. Flannery*) has appeared on Broadway in *State Fair*, *Damn Yankees*, *She Loves Me*, *South Pacific*, *Festival*, and as Angel in *The Best Little Whorehouse in Texas!* Off-Broadway credits include: *Christina Alberta's Father* at the Vineyard, *Blue Plate Special* at MTC, *Just So*, *Personals*, and *Angry Housewives*. National Tours: Maggie in *42nd Street*, Lulu in *Footloose*, and Mrs. Claus in *The Radio City Christmas Spectacular*. TV: *Law & Order: SVU*, *Murphy*



Mickey Felice's
"On Main"

Steaks, Seafood, Pasta
Catering On or Off Premises

Tuesday - Pasta - \$9.95
Wednesday - Seafood - \$15.95
Thursday - Prime Rib \$14.95

411 W. Main Street, Patchogue, NY 631-289-1700

For News or to Advertise Call (877) 504-NEWS



The Tide
Your Community Newspaper

Swan Bakery

All Occasion Cakes

Guy Gagliano

The Official Bakery of Gateway Playhouse

15 South Country Rd., East Patchogue, NY 11772
(631) 475-9626



ART COLEMAN 475-1733
878-2010

Family Owned and Operated For Over 50 Years

- Dedicated to Honest & Reliable Service
- Precast Cesspools Installed
- Portable Toilet Rentals

1 Chapel Avenue, East Patchogue, New York 11772

WHO'S WHO

Brown, Empty Nest, Newhart, and Lurlene on NBC's soap *Texas*. Film: *Saving Face, Fireflies*. Love to Mark & Alice.

FREDDIE KIMMEL (*Ensemble/Letch/Rodney/u/s Jimmy*) is very excited to perform in Gateway's production of *Thoroughly Modern Millie*. Other credits include: *On the Town* at the Lucille Lortelle in NYC as Chip, *Miss Saigon* at the Carousel Theater as Chris, *Anything Goes* (T.U.T.S.) *Footloose* (K.C. Starlight), *Gypsy* (Arkansas Rep), and the National Tour of *Annie Get Your Gun* (Charlie/U.S.). Thanks to Steven H, Virginia, Mark, Amy & Mom & Dad.

IAN LIBERTO (*Ensemble*) is thrilled to be making his Gateway debut. National Tours: *Thoroughly Modern Millie*. Regional: *Cabaret* (Emcee), *Oklahoma* (Will Parker), *42nd Street* (Andy Lee), *Beauty and the Beast*, *Grand Hotel*. Ian is a graduate of Millikin University. Much love goes out to his friends and family for their unrelenting support!

GARY LINDEMANN (*Trevor Graydon*) happily returns to the Gateway Playhouse where last he was seen as "Pilate" in *Jesus Christ Superstar*. Gary has performed in theatres throughout the country for the past 20 years. Favorite roles include "Raoul" *Phantom of the Opera* (Broadway); "Don Quixote" *Man of La Mancha* (Stages St. Louis); "William Desmond Taylor" *Mack & Mabel* (Goodspeed); "Antony" *Sweeney Todd* (Pioneer Theatre); and "Fred/Petruchio" *Kiss Me Kate* (Cape Fear Regional Theatre). Gary is a proud member of Actor's Equity Association.

KELVIN MOON LOH (*Ching Ho*), a Long Island native, is excited to return home and make his Gateway Playhouse debut! Recent credits include *A Christmas Carol* (North Shore Music Theater), *God Lives in Glass* (Manhattan Theater Club/Provincetown Playhouse), and *Into the Woods* (Skirball Center). This fall, Kelvin will join the Broadway Asia Company's production of *The King and I*, which opens in China. Kelvin recently graduated from NYU with a Bachelor's of Music for Vocal Performance in Musical



631-475-1047
14 South Ocean Ave.
Patchogue

From Patchogue Theatre entrance,
1 block west and four stores south

Quality Footwear for the Entire Family Since 1927

- Helpful, Friendly Service
- Areas Largest Selection of Sizes & Widths AA-EEEEEE

Rockport, Easy Spirit, Florsheim, New Balance, Stride Rite, Teva, Timberland, Skechers, Dexter, Hoffer, Keds, Reebok, Dyeables, Topsider, Soft Spots, Clarks, Naturalizer, Hush Puppies, Daniel Green, Foamtreads, Toe Warmer Boots, etc.

10% OFF any purchase with ad only

Excludes Easy Spirit, Dr. Martens & other offers. Expires 12/31/06

THE BELLPORT

Steps away from the Gateway Playhouse

★★★★

New York Times Review

159 South Country Road, Bellport, New York 11713
(631) 286-7550

JOE 281-0376

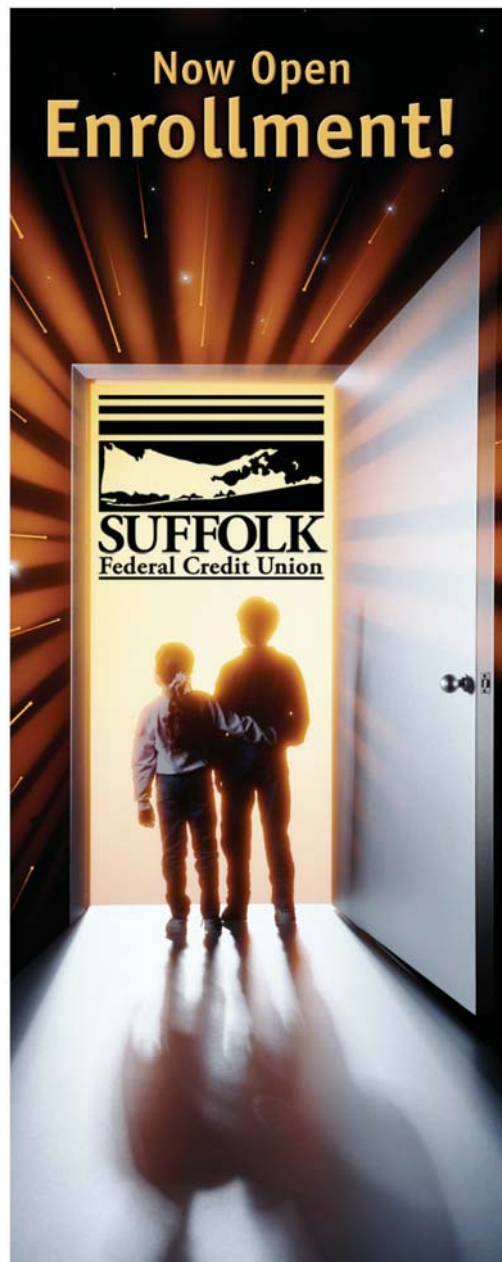
SHIRLEY SLEEP SHOPPE

618 Montauk Highway • Shirley, NY 11967



Complete Line of Conventional,
Waterbeds & Futons

Save with the "Power of Free" and Join Suffolk Federal Credit Union!



During 'Open Enrollment'* you too can keep more money in your pocket with the "Power of Free":

No monthly checking account maintenance fee

No minimum checking account balance

Free phone account access

Free online account access

Free online bill payment

No per-transaction fee

Free Visa check card



Visit us online at www.suffolkfcu.org, call 631.924.8000, or stop by one of our branches and start enjoying the benefits of being an SFCU member today!



Islandia 1282 Motor Parkway
Lindenhurst Sunrise Plaza, 656J North Wellwood Ave
Medford 3681 Horseblock Road
Miller Place Aliano Shopping Center, 691 Route 25A
Riverhead Peconic Plaza, 176 Old Country Road

Additional locations on all Suffolk County Community College campuses.
*Must live or work in Suffolk County to be eligible for membership.

This credit union is federally insured by the National Credit Union Administration

WHO'S WHO

Theater. Thanks to my parents, friends, and everyone at Gateway for this wonderful opportunity.

KRISTIN MALONEY (*Millie Dillmount*) is delighted to return to Gateway, where her previous appearances include *Meet Me in St. Louis*, *Wizard of Oz*, and *The Holiday Spectacular*. She is also currently playing – no joke – Dorothy Parker in the musical *The Talk of the Town*, in New York City's famed Algonquin Hotel (Oak Room). Also in New York, Kristin earned a Drama League Performance Award nomination for her Off-Broadway debut (*The Streets of New York* – Irish Repertory Theatre), and made her principal debut in New York City Opera's production of *The Glass Blowers*. Kristin toured Europe as the Eva Peron alternate (*Evita*) and Mary Magdalene (*Jesus Christ Superstar*). Kristin is a proud member of the BMI/Lehman Engel Musical Theatre Workshop (lyricist) and Actors Equity Association. She wishes to thank her family, friends & co-workers for their support. For more info, see www.kristinmaloney.com.

CRISTIN MORTENSON (*Miss Dorothy Brown*) is thrilled to be back performing for Gateway Playhouse and out of Los Angeles for the summer. Broadway: *By Jeeves*, (performed the role of Stiffy Byng, original Broadway cast member). National Tours: Christine Daae in *Phantom of the Opera*. Regional: Hope Harcourt in *Anything Goes*, Tracy Lord in *High Society*, Maria in *The Sound of Music*, Cinderella in *Into the Woods*, Laurey in *Oklahoma* (opposite Rue McClanahan), Martha Jefferson in *1776* (Gateway), Marsinah in *Kismet*, Glinda in *The Wizard of Oz* (Patchogue Theatre) and Cinderella in *Cinderella*. TV: *All My Children*, *The Tonight Show*, as well as various commercials. Film: *The Stepford Wives*, *The Passion of Daryll*, (showing at Sundance in 2006). Also look for her as the new Spokeswoman for Simmons Beauty Rest Mattresses for the next 5 years. Cristin is a proud member of Actors Equity Association. Thanks to all of you for being here tonight!

Bios continued on Page 23

Beach House Restaurant



Lunch & Dinner - Indoor/Outdoor
363 Grove Ave. Patchogue 631-758-3524
(closed Mondays)

Richard B. Miller, Assistant Manager
Vice President - Investments

Robert A. Nogrady, Branch Manager
Vice President - Investments



A.G. EDWARDS.
FULLY INVESTED IN OUR CLIENTS™
Trusted Advice - Exceptional Service

500 West Main, Suite 105
Babylon, NY 11702
(631) 661-1600 - toll-free: (877) 613-1600
richard.miller@agedwards.com
robert.nogrady@agedwards.com

Member SIPC - 2006 AG, Edwards & Sons, Inc.

Sign up today for your **FREE** Bellport Discount Card!

Local stores and businesses belonging to the Bellport Chamber of Commerce are offering the community special offers! Save money by supporting your local businesses! To receive your card just fill out this form and mail to:
Bellport Chamber of Commerce, PO Box 246 Bellport NY 11713
One per person only. Quantity is limited to the first 2500 participants.
Check our website www.bellportchamber.com for the latest discounts and offers!



Name: _____ Address: _____

State: _____ Zip: _____ Phone (optional): _____ E-mail: _____

Visit These Fine Establishments & Enjoy the Charm of Bellport



Enjoy scrumptious breakfasts, lunches,
light dinners and the best coffee around!
141 MAIN STREET • 286-5652

WE BUY & SELL:

FINE JEWELRY
STAMPS

COINS
CURRENCY
VINTAGE JEWELRY

WATCHES
ANTIQUES

BELLPORT

JEWELERS & GALLERIES
WWW.BELLPORTGALLERIES.COM

5 BELLPORT LANE, BELLPORT, NY 11713
286-7700

Goldsmith & Numismatist on Premises
Free watch battery replacement with your ticket stub

Carla Marla's
ICE CREAM PARLOR

**BUY ONE
ICE CREAM
GET ONE
HALF OFF**

WITH YOUR 2006
TICKET STUB

8 BELLPORT LANE
286-0044

Find Your Gardening &
Decorating Inspiration at

***Inside
Home and gardens Out**

Home & Garden
Necessities and Accessories

Flowering Plants • Pottery
Candles • Garden Tools & Shoes
Fresh Flowers • Organics
Home & Garden
Decor and Gifts

631.286.8370
145 Main Street
www.insideouthomeandgardens.com

**DONNA
WATERS**
Clothing & Accessories

125 Main Street
Bellport
631-286-3901

Summer 2006

Hours
Mon - Sat 11 AM - 6 PM
Sun 11 AM - 4 PM

Shop and enjoy
the relaxing
book room at...

**Treasure
Island
Antiques
& Books**

143 Main Street
286-8503

SPOTLIGHT ON... COSTUMING



In theatre, sets and lighting are representational – they suggest a street, or a ship, or a sidewalk café. It's the costumes that fully flesh out the period and make audiences instantly aware of where they are. A simple bench on an empty stage says nothing, but add a couple in bathing suits and we're at a beach. Change their clothes to a medieval style and we're in King Arthur's throne room. Costumes also give hints as to the character's nature – in *Oliver!* the audience knows exactly what kind of preening peacock Mr. Bumble is, simply by the elaborate blue and gold coat he wears.

Gateway Playhouse has come a long way from the early days when apprentices made their own costumes. Today, costumes are usually rented by the show from a costume house, and Costume Coordinator Marianne Dominy supplements them with new purchases or pieces from Gateway's extensive inventory accumulated over more than 50 years. In an average season, Marianne will also build one show entirely.

Producer Paul Allan has developed relationships with National Regional Theatres renting sets back and forth, which is a mutually beneficial way to share the rising expenses of building sets and costumes. Upon viewing a recent production of *Oliver!* at the acclaimed Marriott Lincolnshire Theatre in Illinois, Robin Joy Allan,

Artistic Director, made special note of the costume design, and felt "the pieces worn especially captured Dickens world, with much detail and texture." She made a couple of phone calls to see if they were available as a complete set. Fortunately, they were, and having just been built, late 2005, they were also in great condition. Gateway has also rented Marriott's packages for *Thoroughly Modern Millie* and *La Cage aux Folles*. Marianne designed *The Fantasticks*, and Costume World will do *Urinetown* with the costumes from the Broadway show.

The stage manager goes through the show and writes the costume plot – a list of what characters need to be wearing in each scene. Marianne will meet with the scenic designer to make sure the costumes will work onstage with the set. On the first day of rehearsal Marianne and her staff take cast measurements and either send them to the costume house to be altered, or if the costumes are already on hand, begin cataloguing, fitting, and accessorizing. Costumes are made so that they can be altered to fit nearly anyone. "Inside the costumes there are large seams; you can get another four inches if you need to," explained Marianne. She



tries to fit the actors for shoes as quickly as she can, so they can rehearse in them.

Costume Parade is held before the final dress rehearsals, so the actors can be lined up in costume for the artistic staff to see, it's here that some costumes may be cut from the production. At the first dress rehearsal, Marianne takes notes to see how well the costumes work under the lighting and for the actor, and may change costume pieces or jewelry. She has one more chance to see the work at the final dress rehearsal the following afternoon.

Once the show has opened, the costuming is set, but Marianne and her assistants still have work to do to maintain the costumes throughout the run. And Actors' Equity dictates that theatres provide actors with clean undergarments per show. "That includes t-shirts, stockings, socks. We do a lot of laundry, as many as five or six loads a day," said Marianne. When a show is in Patchogue, she and her staff will bring the laundry back to Gateway each day. At the end of the run, the rented costumes are catalogued, packed, and shipped.

This year, the huge costume inventory that Gateway has been gathering since the 1950's is being moved from the former barn loft to a much larger space in a building behind the costume shop. The loft will now be used exclusively for storing props. "Every year we get more clothes. Just from last year we have *The Full Monty*, *The Jungle Book*, and the Christmas show," Marianne said, "You even add to shows that come with lots of pieces! For example, *Sugar* came with a lot of hats. But none of them looked right, so we ended up buying two." However, the new building is a former sound studio, where there should be room to accumulate costumes for another fifty years. ♦

Debra Canavan

CLASSICS


Great Jewelry
and Accessories
New Things
Arriving
Daily




Casual, Career & Cocktail
 53 Main Street, Sayville – 631.563.9385

10% OFF ADMISSION
WITH THIS AD*


A WORLD OF ADVENTURE AWAITS...




SNORKEL WITH RAYS, CLIMB ABOARD OUR TOUR BOAT, OR PAY A VISIT TO SOME PENGUINS. THE ADVENTURES NEVER STOP AT ATLANTIS MARINE WORLD. THIS SUMMER, DIVE WITH SHARKS. CLIMB OUR 25-FOOT ROCK WALL. OR SAY HELLO TO THE PARROTS AT OUR NEW AMAZON AVIARY. THERE'S SO MUCH TO SEE, DO, AND EXPLORE - ALL AT ATLANTIS MARINE WORLD.



GET EXTREME!



SHARE A SWIM!



431 EAST MAIN STREET
RIVERHEAD, NY 11901
631.208.9200
WWW.ATLANTISMARINEWORLD.COM

* NOT TO BE COMBINED WITH ANY OTHER OFFER. EXPIRES 12/31/06. GPR-06.

WELCOME...

Enjoy the Beauty of Bellport



Pamela Lerner Antiques
with
Kate Carmel, Fine & Decorative Arts

www.pamelalernerantiques.com
e-mail pamelalernerantiques@msn.com

Tel 631-803-2689 • Cell 631-275-1762
Member, Appraisers Association of America
147 Main Street, Bellport NY 11713

"YOUR HOME AWAY FROM HOME"




Summer Salt
BEACH HOUSE

*Fabulous things for you,
your home and those you love.*

136 Main Street, Bellport, New York 11713
631-286-4638 Fax: 631-286-8397
Carol Wolpert - summersalt86@aol.com

PAPA NICKS PIZZA

Gyros
Salads
Heros
Dinners



Daily Lunch
Specials

286-6400
117C-South Country Road, Bellport Village, NY

THE VARIETY MART

An Old Fashion
Five & Ten




138 Main Street
Bellport, New York 11713

631-286-2210



AUTO GLASS

Bellport Glass & Mirror

- Call us BEFORE your Insurance company
- INSURANCE DIRECT BILLING
- AUTO GLASS
- CUSTOM MIRRORS
- TABLE TOPS
- INSULATED GLASS
- STORE FRONTS
- RESIDENTIAL GLASS

631.286.1885
150A Main Street, Bellport, NY 11713

CHARLIE PARKER (*Muzzy Van Hossmere*) is thrilled to join this multi-talented cast in her Gateway Playhouse debut. Most recently seen as the Washing Machine and Moon in *Speakeasy's Caroline, or Change*, other New England area credits include: *Utah's Crying* - Nurse Sonshine (Abingdon Theatre) and *A Girl Called Dusty* - Tanya (Actors Studio & Provincetown Repertory Theatre). Other regional credits: *Ma Rainey's Black Bottom* - Dussie Mae & *Beowulf* - Wealtheow (Seattle Repertory Theatre), *Smokey Joe's Café & Hair* - Dionne (5th Avenue Theatre), *Prince & the Pauper* - Ordway Center for the Performing Arts, *Man of La Mancha* - Aldonza (Village Theatre), *Black Nativity* (Intiman Theatre), and *Dreamgirls* - Effie White, *Standby* (Regional Tour). Film credits include a brief appearance in Fine Line Features' *Let's Talk About Sex* and campy indie-flick *Gory Gory Hallelujah*. Proud member of Actors Equity Association. Love to Pop and MANDrew.

ADRIAN PEÑA (*Bun Foo*) is thrilled to be making his Gateway debut in *Millie*! Having just finished the 2nd National Tour of *Thoroughly Modern Millie*, he is excited to be stepping up into the role he understudied while in the tour's ensemble. A 2005 graduate of New York University's Steinhardt School of Education, Adrian's credits include *Fiorello!*, *Like You Like It* (first staging), *Ragtime*, Larry in *Babes in Arms*, and dance captain for *A Chorus Line*. He also spent summer '03 singing and dancing in "The Sweetest Place on Earth" at HersheyPark in Hershey, PA. Much love and many thanks to Mom, Dad, bro 1, bro 2, Maura Dintock, Fox, and Jonny.

ANNA REBY (*Ensemble/Ethel*) returns to Gateway after performing in last season's *42nd Street*. National Tours: *Crazy for You* (Polly), *A Wonderful Life* (Mary Hatch), *42nd Street* (Gladys). Regional: *The Radio City Christmas Spectacular* (Stunt Mary), *Damn Yankees & Jesus Christ Superstar* (The Munny). University of Michigan graduate, many thanks to ever-supportive BNB, WD & Mr. Rebert.

SIERRA SCOTT (*Ensemble/Rita/Dorothy Parker/u/s Dorothy*) is thrilled to be part of the company at Gateway Playhouse. Most recently she was seen in the First National Tour of

Oklahoma as swing, u/s Ado Annie. Favorite roles include Rumpleteazer in *Cats* (Prather Family of Theatres), Virtue in *Anything Goes* (St. Louis Repertory Theatre), and Little Red in *Into the Woods* (Arundel Barn Playhouse). Sierra has also performed around the world as a principal singer with Radisson Cruise Lines. Sierra holds a BFA from Webster University. All my love to Mom, Dad, and my penguin, Nick.

NICK SPANGLER (*Jimmy Smith*) was last seen as Matt in Gateway's production of *The Fantasticks* and is currently earning his B.F.A. in musical theatre at NYU's Tisch School of the Arts. A native Californian, Nick's past credits include: Bat Boy in *Bat Boy: The Musical*, Zack Morris in *Saved by the Bell: The Musical*, Sparky in *Forever Plaid*, Tommy in *The Who's Tommy*, and Riff in *West Side Story*. In his upcoming final year at NYU, Nick is excited to have been cast as Jamie in Jason Robert Brown's *The Last Five Years*.



MONTI'S
AUTO WORKS

It's in the Details

Expert Auto Collision Repairs
All Insurance Accepted

1791 Montauk Highway
Bellport, NY 11713

286-2116

**WE'RE SUFFOLK COUNTY'S
BEST KEPT
TRUCK
SECRET!**

"SERVING THE COMMUNITY SINCE 1952
AS YOUR GMC TRUCK HEADQUARTERS!"



2007
Yukon



GMC

WE ARE PROFESSIONAL GRADE™

Cassel
GMC TRUCK SALES

550 North Ocean Avenue • Patchogue, NY
3 Miles South of I-19 • 1 Block North of Sunrise Hwy.

1-800-758-5811
SALES • PARTS • SERVICE

All Types of New & Used Trucks Available - SUV's, Pick-ups, Vans & Dump Trucks.

WHO'S WHO

MELISSA SYBIL (*Ensemble/Cora/Mathilde/ Assistant Choreographer*) is thrilled to be making her mainstage debut at The Gateway. She was last seen in Gateway's Children Theater productions. Happy to be back home in Bellport, Melissa just finished the national tour of *The Will Rogers Follies*. She has performed with the Rockettes in St. Louis, Detroit and NYC. Regional Theater credits include: *Crazy for You* (Patsy), *The Music Man* and *Carousel*. Melissa has her BA in Writing from CUNY Hunter College. A million thanks to Mom, love to my family and MG.

KATY WOOD (*Ensemble/Lucille*) just returned from the North American Tour of *42nd Street*. This year she also performed on a USO Tour to Italy, Turkey, and Egypt. Katy has performed in regional productions of *Singin' in the Rain*, *Guys and Dolls*, *La Cage aux Folles*, *Fiorello*, and *A Funny Thing Happened on the Way to the Forum*. She earned her BA in Dance from Barnard College, Columbia University. Katy is excited to return to Gateway after making her debut in *42nd Street* last summer.

PAUL ALLAN (*Producer*) has been involved in theatre since before he can remember. In the early days of Gateway, he spent his summers following around his grandfather who had his hands full trying to make ends meet - running a theatre in the 60's. Paul grew up here, looking forward to each summer and being able to do more each year. By the time he was a teenager he was beginning to take charge of maintaining this 7 acre complex as well as becoming an integral part of the back stage crew. In the 80's as a young Gateway producer, Paul spent part of the winter months working in NY on many off-Broadway shows - serving as technical supervisor, production manager, and/or show carpenter. At the same time he co-founded a touring company whose shows traveled throughout the US and other countries worldwide. The set rental company was also founded at this time and Gateway scenery is constantly being trucked to various theatres across the country. The main focus, though, is still the productions he produces here for our patrons. This season began with



*Pub Fare That Will Make Your Tongue Smile
Relax Before or After The Show — Full Menu & Desserts
Kitchen Open 11 AM to 11 PM (Mon. thru Sat.) — Bar 'til 1 AM
70 North Ocean Avenue • Patchogue • (631) 289-1900*

**The
BARN MUSEUM**

Home of Long Island History
Special Exhibits

Second Largest Collection
of Painted Tinware
in the United States

THURSDAYS, FRIDAYS & SATURDAYS, 1 TO 4:30PM.



*Bellport-Brookhaven
Historical Society*

**THE
POST-CROWELL
HOUSE 1833**

A Fine Collection of
Period Furnishings

EXCHANGE SHOP
Antiques & Decorative Accessories

Thurs., Fri., & Sat., 11 A.M. - 5 P.M.

Consignments received Wednesdays,
10 A.M. to 12 Noon
(We encourage the donation of fine antiques
which are fully tax deductible)

ALL LOCATED AT: 31 BELLPORT LANE, BELLPORT - 286-0888

Irish Coffee



Hub
at

**Bellport
Country Club**

always open to
the public.

The favorite for
pre- and post-show
dining.

Conveniently located between
Gateway Playhouse and
Patchogue Theater on
SOUTH COUNTRY ROAD, in
BELLPORT VILLAGE

Available for groups and
small parties.

FOR RESERVATIONS
CALL

286-4227

Also visit

Irish Coffee



Hub

on CARLETON AVENUE
in EAST ISLIP
277-0007

ASSOCIATE PRIME MEAT MARKET

A Full Line of Groceries,
Meats & Poultry • Deli,
Vegetables • Beverages



109 Maple Ave. Patchogue, NY 11772
Phone: (631) 475-1749
Fax: (631) 447-5086

Official Winery of Gateway Playhouse



Duck Walk Vineyards

231 Montauk Hwy. • P.O. Box 962
Water Mill • NY • 11976
Phone: (631) 726-7555 • www.duckwalk.com
Complimentary Wine Tastings & Tours
Open all year



Proud supporter of
Gateway Playhouse
and the arts on
Long Island



WWW.NORTHFORKBANK.COM
MEMBER FDIC

his 158th production, as well as a new generation of producer added to the Gateway Family—Paul's first son, Luke.

JOHN MacINNIS (*Director*) was last seen at the Gateway Playhouse 15 years ago as a performer, when he played Junior in *On Your Toes*. He just completed choreographing *High Society* at the Shaw festival in Ontario Canada. Other credits include: choreographing two European productions of Disney's *Beauty and the Beast* which are currently running in the Netherlands and Germany. John also directed and choreographed *The Olympic Medals Plaza* at the 2002 Winter Olympic Games in Salt Lake City, Utah. From 1998-2001, he directed and choreographed *The Radio City Christmas Spectacular*, starring the Radio City Rockettes, including the first international production in Mexico City, Mexico. Other choreography credits include *Beauty and the Beast* (North Shore, Sacramento, Pittsburgh CLO), *Damn Yankees* (TUTS), *Kiss Me Kate* (TUTS), *Once Upon a Mattress* (Music Theater Wichita), *Guys and Dolls* (Seattle's 5th Avenue), *Danny and Faye* and *Honk* (Helen Hayes Nyack). Aside from choreographing, John is also an accomplished performer having appeared in 7 Broadway shows.

MARY GIATTINO (*Choreographer*) is thrilled to return home to Gateway. Mary just finished as Assistant Choreographer to Randy Skinner on *Of Thee I Sing*, at City Center, starring Victor Garber. At Gateway last year, Mary choreographed *42nd Street* and assisted on *Aida*. As a director and choreographer she has been a creative force behind numerous Gateway Children's Theatre productions. As a teacher Mary has educated many children in theatre and dance at the Gateway Acting School and Stage Door School of Dance. As a performer she began her career at Gateway in productions such as *Cabaret*, *Jesus Christ Superstar*, *Annie Get Your Gun*, *A Chorus Line*, *Meet Me In St. Louis*, *It's a Wonderful Life*, *42nd Street*, and *The King & I*. This past Christmas Mary performed in *White Christmas* in Los Angeles (Asst. Dance Captain) as well as having been a Radio City Rockette. She toured the country in

the Broadway National Tour of *42nd Street*. She would like to extend a huge Thank You to Paul, Robin, and Missy Sybil. All my love to Rick and my amazing family.

FRED BARTON (*Musical Director*) is happy to return to Gateway, having arranged and led the band for *Sugar* last season. Fred made his NY debut in 1982 as arranger/performer/pianist in the internationally acclaimed *Forbidden Broadway*; in 1985 the show won its first Drama Desk Award and plays on into the 21st century. Fred followed with *Miss Gulch Returns!*, a one-man performance of original songs that still plays to critical and popular acclaim across the country and generated a popular CD. Mr. Barton's third off-Broadway project, *Whoop-Dee-Do!*, played a season each in N.Y. and London, won two Drama Desk awards, and was recorded by RCA Records. On Broadway and on tour, Fred has conducted Anthony Quinn in *Zorba*, Harold Prince's *Cabaret* revival, Cy Coleman's *City of Angels*, *The Will Rogers Follies* with Marla Maples Trump, and *Camelot* starring Robert Goulet. He has accompanied and/or arranged for Madeline Kahn, Lucie Arnaz, Andrea McArdle, Patti LuPone, Matthew Broderick, Betty Buckley, Mimi Hines and Tovah Feldshuh among many others. Fred was Associate Composer of the hit series "The Magic Schoolbus" starring Lily Tomlin, and contributed music for Michael Moore's "The Awful Truth". Fred's orchestrations are played by symphony orchestras around the country, and he has orchestrated a number of albums: "A Bag Of Popcorn And A Dream" (a collection of rare songs by Wright & Forrest), "A Wrinkle In Swingtime" (a big band collection with singer Elena Bennett), "My Place In The World" (for Broadway singer Neva Small), and "Torch Goddess" (for Broadway singer Karen Murphy). See www.fredbarton.com for more.

ROBIN JOY ALLAN (*Casting and Artistic Director*) has been the Casting Director at Gateway for the last twelve years. Four years ago, she became the Artistic Director at Gateway which includes not only several Manhattan excursions to cast all productions, but

Are you comfortable with your current financial picture?

Annuities • Estate Planning • Retirement Planning • College Planning
Life Insurance • Mutual Funds* • Group Health Insurance
Group Disability Insurance • Long Term Care Insurance
Corporate Pension Plan Reviews • Buy/Sell Agreements

Maria T. Carrara, CPA

Innovative Planning Services, Inc.
516.443.3204

Customized comprehensive planning
to suit your specific goals.

Innovative Planning Services, Inc.
is a representative of the Guardian Life
Insurance Company of America, New York, NY.

Maria Carrara, CPA, is a Financial
Representative with Innovative Planning Services.
* Registered Representative of Park Avenue Securities LLC (PAS),
7 Hanover Square, New York, NY 10004, Securities Products and
services are offered through PAS, 1-888-600-4667.
PAS and the representative do not provide tax advice or services.
PAS is a member NASD, SIPC.



WHO'S WHO

involves planning advertising strategies for all productions, hiring creative staff, designing season ads, posters and booklets, overseeing artistic aspects of each production, costumes, sets and wigs, overseeing Children's Theatre, beautifying the Gateway property from choosing paint colors for actor housing, to adding new perennial floral additions to the Gateway landscape. Prior to moving back home into the wonderland setting of her childhood, she did thrive in Corporate America, spending five years in Los Angeles, casting several TV pilots, MOW's and feature films. You'll find her name on the feature films; *Parenthood*, *When Harry Met Sally*, *Lord of the Flies*, *Side Out* and *Ghost*. Along with her Artistic and Casting Director duties, she is the force behind Gateway's Acting School Division, where she teaches the advanced classes. This is her most impassioned work. Her daughter Hayley, inspires her every day. She hopes her effort is good enough to honor her family, and their amazing effort all these years to bring theatre with integrity to Long Island.

Daniel Pelzig; and *The Transposed Heads* at Lincoln Center, written and directed by Julie Taymor.

KELLY TIGHE (*Scenic Designer*) Off Broadway: *Almost Heaven*. Regional: *Aida*, *Cats*, *The Full Monty*, and *Jesus Christ Superstar* (Gateway Playhouse); *Beauty and the Beast*, *Grease*, *Titanic*, *The Who's Tommy*, *My Fair Lady* (Contra Costa Musical Theatre); *Annie*, *Kiss Me Kate*, *Joseph/Dreamcoat* (Ohio's Carousel Dinner Theater); *West Side Story*, *The Scarlet Pimpernel* (Diablo Light Opera Co.); *Around The World In 80 Days*, *The Pavilion*, *Picasso at the Lapin Agile* (Center Repertory Co.); *The Laramie Project*, *A Midsummer Nights Dream* (PPAS/ NYC). Mr. Tighe served as the resident Scenic designer for Western Michigan's Cherry County Playhouse (*The Music Man* starring William Katt and Josie DeGuzman, and the world premiere of *Will's Women* starring Amanda McBroom), as well as Center Rep in the San Francisco Bay Area. Television: *Sunday Night Woah!* (starring Mo Rocca) for Animal Planet as well as several spots for Verizon, Kit Kat, Disney, and the Oxygen network. Awards and recognitions: Northern California's "Shellie", Drama-Logue, and the S.F. Bay Area's Outer Critic's Circle. Kelly resides in New York City.

MARCIA MADEIRA (*Lighting Designer*) is pleased to design her 19th production for Gateway Playhouse. Her favorites are: *The Fantasticks*, *Sugar*, *42nd Street*, *Gypsy*, *On The Town*, *Swing*, *Jesus Christ Superstar*, *Forbidden Broadway*, *West Side Story*, *The Will Rogers Follies*, and *The Wizard of Oz*. Recently she designed her fourth ice show for Royal Caribbean, *Freedom-Ice.com* for the new largest cruise ship in the world, *Freedom of the Seas* and last winter *Guys and Dolls* directed and choreographed by Daniel Pelzig at the Maltz Jupiter Theatre, in Florida. She received a Tony nomination and won the Drama Desk Award for *Nine* directed by Tommy Tune with Raul Julia. Other Broadway designs include *My One and Only* with Tommy Tune and Twiggy; *Marilyn*, *An American Fable* with Allison Reed and Scott Bakula; and *The Music Man* with Dick van Dyke. Off-Broadway designs include: *Side by Side by Sondheim* at the Dicapo Opera Theatre; *Cloud 9* directed by Tommy Tune; *Privates On Parade* with Jim Dale and Simon Jones directed by Larry Carpenter, choreography by

JOVON E. SHUCK (*Production Stage Manager*) is happy to be in the midst of his fourth season at Gateway. Favorites from the past seasons include: *Oklahoma*, *The Full Monty*, *Aida* and *Miss Saigon*. His other credits include: Broadway: *Noises Off* and *The Graduate*; New York: The New York Shakespeare Festival/Public Theatre, Actors Studio Drama School and five Christmases with *The Radio City Christmas Spectacular*; Regional & Touring: Stamford Center for the Arts Rich Forum, Cherry County Playhouse, Main Street Theatre, Lycian Center and ArtsPower National Touring Theatre. Jovon is a proud member of Actors Equity Association and is equally proud to collaborate in life with his multi-talented wife, Sheila Marie Everett. ♦



BAY STREET
T H E A T R E
2006 TARGET MAINSTAGE SEASON ©

Quartet
By Ronald Harwood

Directed by Jack Hofsis
May 23 - June 4
With Kaye Ballard, Paul Hecht,
Simon Jones and Sian Phillips

VIVA LA VIDA!

By Diane Shaffer
Directed by Susana Tubert
July 18 - August 6
With Mercedes Ruehl as Frida Kahlo

TOMMY

Book by Pete Townshend
and Des McAnuff
Music and Lyrics by Pete Townshend
Directed by Marcia Milgrom Dodge
June 13 - July 9
With Euan Morton

DARWIN
in
MALIBU

By Crispin Whittell
Directed by Daniel Gerroll
August 15 - September 3
*In association with Falcon Theatre

WWW.BAYSTREET.ORG • BOX OFFICE 631.725.9500 • LONG WHARF, SAG HARBOR

Bellport CHOWDER HOUSE

*In The Bellport Hotel
Built 1896*



An Eating and Drinking Tradition

FULL MENU

FULL BAR

Open Daily For Lunch and Dinner
Seven Days A Week

Sunday - Thursday till 11:00 p.m. Friday & Saturday till Midnight

**SPECIALIZING IN FRESH LOCAL SEAFOOD
AT AFFORDABLE PRICES**

STEAKS - CHICKEN - PASTA

*Before and After the Show You'll Want to Meet and Eat At
THE CHOWDER HOUSE*

TAKEOUT

CATERING

19 Bellport Lane • Bellport Village • 286-2343

WELCOME BACK, JOHN MacINNIS

The name MacInnis means "unique choice", and John MacInnis, *Thoroughly Modern Millie's* director, certainly made one as far as his family was concerned when he chose to become a dancer. "I was raised in Boston, and my dad was a plumber," he explained, "To this day my parents still are not into theatre." He remembers being three and putting on his sister's tap shoes, because he liked the sound they made. A few years later, he would watch the girls on his block practicing their dancing lessons on the lawn. *The Lawrence Welk Show* really did it for him, though, every week he would watch the tap dancers, mesmerized, trying to copy their steps. "Finally I asked if I could take dancing lessons, and my mother said if I still wanted to in a year, I could," he said. "A year later she put me in a dancing class where I was the only boy in the school. I had to wear this ridiculous pink and purple leotard, but I was so happy to be dancing, I didn't care what I looked like."

His father was determined that if his son was going to dance, he was going to be the best dancer in the world, and MacInnis was put in a more challenging school, where there were other boys. He would sing all the way home from school at the top of his lungs, and would put his records on in the backyard to tap dance. He nearly got his big break at 11 when *The New Mickey Mouse Club* was casting. MacInnis made it as far as callbacks in Manhattan. "When I got to New York I was so inexperienced, I didn't know someone would be there to play my music. I was too scared to ask. A kid sitting next to me had a tape of the same song I was doing, so I said I'll use your tape," he said. Of course, he had never heard the tape and gave a terrible audition.

Encouraged by the producers to stick with it despite losing the *Mouseketeer* role, MacInnis earned his Equity card a year later in a dinner theatre, where an acting couple asked his parents if they could bring him to New York to be introduced to agents. He was picked up by the first agent he met, and began getting commercials. He didn't do theatre again until he went to NYU for college.

Dropping out of school for a job with the Guthrie Theatre, MacInnis found it difficult to land work when he returned to New

York. "I looked like I was 12 years old and they couldn't use me. But I was determined to overcome my look," he said. He went in to audition for everything, regardless of whether he was

right for it, just so producers and directors would keep seeing his face. He got hired for a tour of *The Tap Dance Kid*. He auditioned for *Me And My Girl* on Broadway and was the last one cut from auditions. "I was 21 and devastated," he remembered, "But great things came out of it - I got the National Tour of *Sweet Charity* and I got to work with Bob Fosse." After the tour, he wound up in *Me And My Girl* anyway, as a replacement, and spent two years in the show.

MacInnis then performed in *Jerome Robbins' Broadway* for nearly a year. In 1991 Gateway Playhouse cast him as Junior Dolan in *On Your Toes*. "It was the first role I'd really done. I ended up getting *Guys And Dolls* on Broadway because Chris Chadman (the choreographer) had a house out here, saw me at Gateway, and saw that I could do more than just be a chorus boy," MacInnis said.

*"When I got to New York
I was so inexperienced,
I didn't know someone would
be there to play my music."*

Welcome Back... continued on Page 33

GATEWAY PLAYHOUSE STAFF

ADMINISTRATIVE

Executive Producer	Ruth Allan
Producer	Paul Allan
Associate Producer	Jeff Bellante
General Manager	Gale Edwards
Publicist	Linda Unger
Company Manager	Erin Kraus
Musical Contractor	Lou Gallo
Music Librarian	Joe LoSchiavo
Assistant to the Producer	Enrico Spada
Administrative Assistant	Jackie Intravaia

ARTISTIC

Artistic/Casting Director	Robin Joy Allan
Director	John MacInnis
Choreographer	Mary Giattino
Musical Director	Fred Barton
Scenic Designer	Kelly Tighe
Costume Designer	Nancy Missimi
Lighting Designer	Marcia Madeira
Assistant Choreographer	Melissa Sybil
Associate Casting/Artistic Director	Christopher Lentz
Assistant Scenic Design/Scenic Charge	Brittany Fahner
Sound Consultant	Dominick Sack
Production Photographer	Jeff Bellante

PRODUCTION

Production Manager	Brian Loesch
Production Stage Manager	Jovon E. Shuck
Technical Director	John Sabo
Costume Coordinator	Marianne Dominy
Master Electrician	Dawn Kenseth
Props Master	Cliff Andrea
Sound Engineer	Cody Spencer
Assistant Stage Manager	Shannon O'Connor
Assistant Technical Director	Spencer Padilla
Assistant Master Electrician	Justin Hoffman
Assistant Scenic Painter	Danielle Goralnik
Shop Foreman	Colin Babcock
Deck Crew Chief	Ryan Brooke
Technicians	Elan Bustin, Ricky Haug, Aaron Kelly Joseph Loesch, Linda Luscombe, Stephanie Shipman, Deuce Stenstrom
Wardrobe	Patrick Herb, Megan Moore, Megan Pitcher
Interns	Brittany Burke, Don Hanna, Ashley Haughwout, Emma Katz, Matt McKenna, Rudolf Mikkleson Brendan Whiting, Kaitlyn Wunderlich

BOX OFFICE

Box Office Manager	Laurie Parr
Director of Group Sales	Annmari Allan
House Manager	Joanne Famiglietti
Box Office Staff	Melissa Durr, Jessica Harrison, Nadine Hazard, Jaclyn Lemp, James O'Donnell, Brian Strumwasser

FACILITIES

Facilities Manager/Hospitality	Greg Potter
Maintenance	Don Harrison
Cleaning Contractor	Fiori Enterprises, Inc.
Grounds Maintenance	HTM Landscaping Company
House Staff	Alyssa Daniels, Brendan Dooling, Don Hanna, AJ Lebbens, Melanie Magdits
General Counsel	Ann L. Nowak & Associates

Welcome Back... continued from Page 31

He also performed in the original cast of *Steel Pier*, and in the Broadway revivals of *How To Succeed In Business* and *Kiss Me Kate*, and began working as a choreographer. Working in *Kiss Me Kate* was something of a lesson in time management, as MacInnis was choreographing the medals award ceremonies for the Salt Lake City Olympics at the same time. "I'd do the show Tuesday through Sunday, fly out to Salt Lake Sunday night, have meetings all day Monday, and Tuesday return back to New York in time for the show. I did that for six months," he said. He has choreographed *Beauty And The Beast* currently running in Amsterdam and in Germany. He didn't even audition for *Thoroughly Modern Millie*, he had just finished the Olympics. He was hired as a swing for *Sweet Smell Of Success*, when someone in the *Millie* cast broke their wrist, and he was asked to substitute in the original cast. He

hadn't signed his contract yet, so he took the *Millie* job, a lucky thing since *Success* closed a few weeks later! MacInnis finds directing somewhat easier than choreographing. "With choreography, I am showing them everything, every step," he explained, "With directing, the actors find a lot of it on their own. I tease my director friends who haven't choreographed – they have it easy!"

MacInnis was delighted to learn he has a connection with Patchogue Theatre. The downstairs seats came from Manhattan's Imperial Theatre, and the last show before that theatre's renovation was *Jerome Robbins' Broadway*. "I'm going to go out and touch the chairs!" he exclaimed. He doesn't need the luck - despite feeling that "every job will be my last" - his unique choice seems to have paid off. ♦



is the official landscaper of

Gateway Playhouse

all work done by owner

Nicholas J. Harding

631-475-0636



A NOTICE ABOUT PARKING

We strongly encourage our patrons to always park on Gateway grounds.

Beginning this season, parking will no longer be allowed on Maplewood Drive **north** of the back Gateway exit. Parking is also prohibited on the **east side** of the street (Gateway side). Observe the No Parking signs.

The Village of Bellport has advised us that cars parked in these areas **will be ticketed**. Please park on the west side of the street, opposite the Gateway fence, between the back exit and South Country Road.

We appreciate your cooperation in making your visit to Gateway as pleasant as possible.

Searles

GRAPHICS, INC.



DESIGN
Innovation

PRE-PRESS
Precision

MARKETING
Solutions

PRINTING
Versatility

56 Old Dock Road | Yaphank NY 11980

† 631.345.2202 | f 631.345.0975 | www.searlesgraphics.com

Licensed Home Inspections

HEIMER
ENGINEERING, P.C.

WITH THE **INSIGHT AND UNDERSTANDING** THAT ONLY
A LICENSED PROFESSIONAL ENGINEER CAN PROVIDE®

• INSPECTIONS 7 DAYS A WEEK •

Over 75,000 Inspections
Certified, Insured & Bonded

• SERVING ALL OF NYC, LONG ISLAND, WESTCHESTER •

PRE-PURCHASE HOME AND BUILDING INSPECTIONS

Residential, Commercial, Industrial, Condo, Co-op and Brownstones

Prioritized Cost Estimates Included

• REPORTS E-MAILED AT NO EXTRA CHARGE •



MEMBER
NATIONAL ACADEMY OF BUILDING INSPECTION ENGINEERS



www.heimer.com
800 605-1500



Prudential
CRES Commercial Real Estate

Looking for Investment Properties?

Looking to sell or lease your property?

KNOWLEDGEABLE
and EXPERIENCED
REAL ESTATE ADVISORS
with LOCAL EXPERTISE
and a NATIONAL REACH

CALL DAN HURNEY
631-928-9600 x114
for a FREE CONSULTATION

**South
Country
Inn**

*Fine Italian and
Continental Cuisine*

**Moderately Priced Dinners
Starting at \$13.95**

**Early Bird Specials Served
Complete - Daily 3:30 - 6 PM
Sundays 1 - 6 PM**

**Daily Lunch Specials
Tuesday - Sunday**

Complimentary glass of wine
with your lunch or dinner when
you present show tickets or this ad.

*A short drive from both theatres
on South Country Road.*

**Special packages for parties &
theatre groups.**

**Open Tuesday - Sunday,
for Lunch & Dinner**

Reservations recommended

668 South Country Rd., East Patchogue

758-1919



*Now enrolling for the
Summer Sessions!*

**ACTING AND MUSICAL
THEATRE TRAINING**

all levels of acting for all ages thru adult



GATEWAY ACTING SCHOOL

LEARN FROM THE PROFESSIONALS!

286-9014

Swezey

FUEL CO., INC. - EST. 1919

**Suffolk's Largest Family
Owned Oil Company**

- Automatic Oil Delivery Service
- 24-Hour Emergency Service
- Budget Plans That Pay You Interest
- Expert Installation Of Boilers,
Burners, Hot Water Heaters &
Pool Heaters



475-0270

51 RIDER AVE., PATCHOGUE

**How do you spell
great banking?**



The Smart Package

- ▶ **Interest Checking** Free with Direct Deposit
- ▶ Premium **Money Market** Savings Account with no monthly maintenance fees
- ▶ **And more...**

Ask an HSBC representative how to open up a Smart Package today!

Bellport Office
20 Station Road
Bellport, NY 11713
631-286-3800

Patchogue Office
325 E. Main St.
Patchogue, NY 11772
631-475-2600



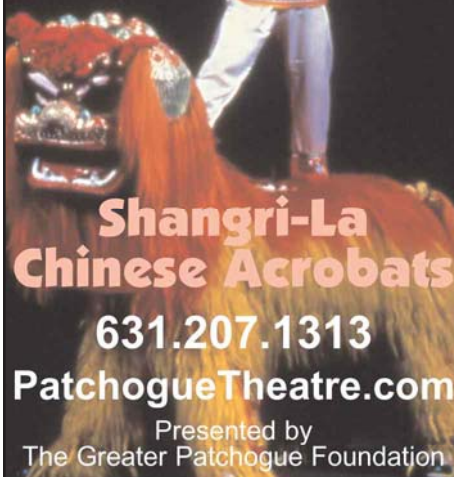
us.hsbc.com 1-800-975-HSBC

Issued by HSBC Bank USA ©HSBC Bank USA 2006

Patchogue Theatre

**Nov. 12
3 PM**

\$22 | \$27 | \$32 | \$37



**Shangri-La
Chinese Acrobats**

631.207.1313

PatchogueTheatre.com

Presented by
The Greater Patchogue Foundation

GET YOUR ACT TOGETHER!



Time is Running Out!

Medicaid has long served as a safety net for middle class seniors faced with the catastrophic cost of a nursing home.

This program is constantly under attack and is always changing. Most recently, the Deficit Reduction Act of 2005 (DRA) has changed the law making it much harder to protect your assets requiring earlier and smarter planning.

It is our duty to alert you to this new law and encourage you to seek our counsel **IMMEDIATELY**. We remain dedicated to preserving the rights and the dignity of senior citizens and those with special needs.

***We urge you to plan now
before TIME RUNS OUT!***

DAVIDOW, DAVIDOW, SIEGEL & STERN, LLP

Original Firm Founded 1913

Long Island's Elder Law, Special Needs and Estate Planning Firm...our 93rd year!

New! Nassau Location

666 Old Country Road
Suite 810

Garden City, NY 11530
Tel (516)393-0222
Fax (516)228-6672

Main Office

One Suffolk Square
Suite 330

1601 Veterans Memorial Hwy.
Islandia, NY 11749
Tel (631)234-3030
Fax (631)234-3140

East End Office

13105 Main Road
P.O. Box 344

Mattituck, NY 11952
Tel (631)298-9600
Fax (631)761-0370

H.B. MILLWORK

Custom Stairs • Rails • Windows • Doors • Millwork C.



Visit Our
New
Showroom
and
Website

494 Long Island Avenue
& Rte. 112 in Medford
(Exit 64 off the LIE South)

631-289-8086

www.hbmillwork.com

www.davidowlaw.com

DANCE, SING, CHEER THE 57TH SEASON IS HERE

"Spend A Little Time With Me"

SWEET CHARITY JULY 26 - AUGUST 19

"Open Your Eyes! For If We've Done Our Job Correctly, You Will Leave With More Than A Torn Ticket Stub And A Folded Program!"

LA CAGE aux FOLLES
AUGUST 23 - SEPTEMBER 9

*"It's A Kind Of Mythical Place You Understand...
Well, Let's Just Say It's Filled With
Symbolism And Things Like That."*

URINETOWN
SEPTEMBER 13 - OCTOBER 7



**Gateway
PLAYHOUSE**

South Country Rd., Bellport, New York

631-286-1133 1-888-4TIXNOW

We know why you fly **American Airlines** AA.com

Official Airline for the Gateway Playhouse

**ALL TICKETS
ON SALE NOW!**

WWW.GATEWAYPLAYHOUSE.COM

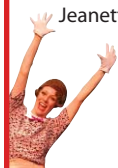
**GATEWAY PLAYHOUSE would like to thank our volunteer staff
for their dedication and support. IT IS MUCH APPRECIATED.**

Marie Rachek - Head Usher

Ushers - Al Aberg, Missy Atchue, Carmela Aiosa, Joel Barak, Anne Burke, Johanna Digiovanni,
Betty Entress, Joyce Gambino, Linda Good, Marian Harrison, Joanne Hittner, Mary Lanier,
Jeanette Margiotta, Connie Merced, Sue Nemet, Joanne Noonan, Peter Pernice, Linda Randolph,
Sandy Reifel, Allan Ritchie, Terry Seng, Rosalind Senie, Jack Stein, Carol Weinstein

IF YOU WOULD LIKE TO JOIN OUR VOLUNTEER STAFF CALL 286-0555

**Become part of the Gateway Family
and receive complimentary tickets to our shows!**



CHILDREN'S THEATER

presented by Gateway Playhouse

Buy Tickets to the
FIRST 2 SHOWS, and receive **50% OFF TICKETS**
to one or all of the remaining **3 SHOWS!**

The WONDERFUL WORLD OF
MAGIC JULY 8

Saturday - 10:30 a.m. only at Patchogue Theatre

The Wizard of Oz JULY 14

Friday - 10:30 a.m. and 1 p.m. at Patchogue Theatre

**Beauty
and the Beast**

JULY 21

Friday - 10:30 a.m. and 1 p.m.
at Patchogue Theatre

Disney's
Cinderella
KIDS

AUGUST 4,5,11,12,18,19

all at 10:30 a.m. in Bellport

**STUART
LITTLE**

AUGUST 26

Saturday - 10:30 a.m. and 1 p.m.
at Patchogue Theatre

ALL SEATS \$9.00 RESERVED SEATING
631-286-1133 WWW.GATEWAYPLAYHOUSE.COM



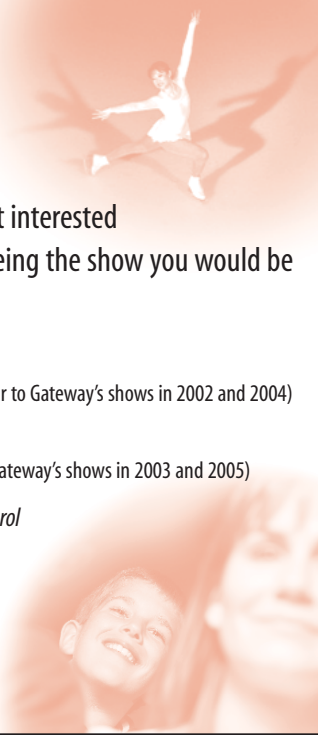
Sorry, Children aged 2 or older only. No infants please, as they disturb others from enjoying the performance.
Every child, "out of the womb" must enter with a purchased ticket. *Shows subject to change without notice

AUDIENCE POLL

Please help us plan this year's Holiday Show
by completing the survey below. Number the following
shows from 1 to 5; one being the show you would be most interested
in seeing Gateway produce this holiday season, and five being the show you would be
least interested in seeing.

- _____ **A Holiday Spectacular on Ice**
(Winter themed ice skating variety show with songs and specialty acts, similar to Gateway's shows in 2002 and 2004)
- _____ **A Century of Christmas Holiday Spectacular**
(Christmas through the decades, variety show with specialty acts, similar to Gateway's shows in 2003 and 2005)
- _____ **A classic holiday musical such as *It's a Wonderful Life* or *A Christmas Carol***
- _____ ***Cold As Ice*, a brand new ice-skating musical**
starring Irina Slutskaja, Elvis Stojko, and Emily and/or Sarah Hughes.
- _____ **Irving Berlin's *White Christmas*, the musical**
(would be the New York Premiere)

THANK YOU!



American Airlines, American Eagle, AA.com and We know why you fly are marks of American Airlines, Inc. American Eagle is American's regional airline affiliate.



We know the power of a moving performance. That's why American Airlines proudly supports the arts in communities around the world. After all, we offer world-class performances to more than 250 cities in 40 countries around the globe. Book your next trip online at AA.com or call us at 1-800-433-7300.



We know why you fly **American Airlines**
AA.com

