



# Gateway

PERFORMING ARTS CENTER OF SUFFOLK COUNTY

ROCK  
OF  
AGES

**DIAMONDS·WATCHES·BROOCHES**  
**GIA CERTIFIED DIAMOND GRADER**  
**BRACELETS·EARRINGS·CHARMS**  
**ANTIQUE & CONTEMPORARY GOLD JEWELRY**  
**WRITTEN APPRAISALS**  
**MUSICAL INSTRUMENTS & RENTALS**  
**EXPERT JEWELRY REPAIRS**

A special celebration or an invest in your financial future, by selling your unworn jewelry, we are at your service.

*W<sup>m.</sup>J. O'Neill*  
*Advancing your financial lifestyle needs with  
compassion, confidence & trust for 60 years*

We are proud and privileged to be part of a company with a nationwide reputation for honesty, integrity, dependability and service. We attend to your daily financial needs not met by any other financial institutions. Our customers represent today's working class citizens who have an unexpected need for a short term loan. We buy Gold. Licenced by Suffolk County Consumer Affairs.

**One East Main Street  
Patchogue, New York 11772  
wmjoneills.com 631.289.9899**



# PORTERS

*on the lane*

COCKTAILS  RESTAURANT  CATERING



**FOR RESERVATIONS *or* MORE INFO CONTACT US**

phone ✦ 631 — 803 — 6067

email ⚓ [portersbellport@aol.com](mailto:portersbellport@aol.com)

**NEW MENUS - SPECIALS - MUSIC - UPCOMING EVENTS**

**SUMMER HOURS  MORE VISIT ...**

website ⚙ [www.portersonthelane.com](http://www.portersonthelane.com)

*Address - 19 Bellport Lane Bellport Village NY 11713*

**SOMETHING SWEET FROM ACROSS THE STREET**



*Carla Marla's*

ICE CREAM PARLOR & CANDY SHOP



one free topping w/ this coupon

**CALL: 631-803-6630**

*email: [carlamarlas@hotmail.com](mailto:carlamarlas@hotmail.com)*

8 BELLPORT LANE, BELLPORT VILLAGE, NY 11713



# THE Gateway

PERFORMING ARTS CENTER OF SUFFOLK COUNTY

Welcome back to our 66th season! As the oldest professional theater on Long Island, Gateway is able to quickly acquire the rights to new Broadway titles, as soon as they become available. This summer, we will bring five recent Broadway hits to Long Island for the first time.

The Gateway's production of *Rock of Ages* features members of the Broadway Company including Genson Blimline, who played Lonny; Michael Minarik, Associate Producer; Lead Guitarist, Tommy Kessler; and Drummer, Jon Webber. Both Genson and Michael have a long history with The Gateway—on stage, and in Genson's case, also as an acting school teacher. Tommy is also playing lead guitar for *Blondie*. Teamed up with Director Keith Andrews, *Rock of Ages* promises to be a high energy start to our 2015 season.

Sally Struthers, who most recently starred in The Gateway's production of *Nine to Five*, returns this summer as Duchess Estonia Dulworth in George and Ira Gershwin's *Nice Work If You Can Get It*. The show, packed with memorable tunes, promises also to be a lot of fun.

*Sister Act* will keep you rolling in the aisles with some of the best songs for the stage. Written by Alan Menken and starring Rashidra Scott from the Broadway show, you won't want to miss what the press called "a ripping good time hit."

We move to the Patchogue Theatre for our major production of *Billy Elliot*, The Musical, winner of ten Tony awards. Based on the 2000 film, *Billy Elliot* tells the story of a motherless boy who trades his boxing gloves for ballet shoes, and is set against the backdrop of the UK miner's strike in North Eastern England. The song, dance, and moments of flight will keep you enthralled and spellbound.

Later this summer, *Ballroom with a Twist* returns, features pros from *Dancing with the Stars* and your favorite reality singing and dancing competitions. We then close the season with the disco phenomenon *Saturday Night Fever*, prefaced by The Gateway's fifth annual gala, *Gateway's Disco Ball*.

Throughout the year, we have continued to build on our community outreach efforts and partnerships with local non-profits. This year we were able to expand our theater arts education program in South Country School district, with the generous support of the South Country Education Foundation and The Knapp-Swezey Foundation.

I invite you to sit back and enjoy the show. It is because of you, our loyal audience throughout the years, that we are able to grow and bring to Long Island the very best that Broadway has to offer.



Sincerely,

Paul Allan,  
Managing Producer



Production of

# ROCK OF AGES

Book by

**CHRIS DARIENZO**

Arrangements and Orchestrations by

**ETHAN POPP**

Starring

**GENSON BLIMLINE**

and

**EMILY BEHNY, KELLY FELTHOUS, ANTHONY FESTA, ROB MARNELL**

With

**STEVE BRADY, JUSTIN COLOMBO, JEREMY GASTON, MICHAEL LORZ,  
AMMA OSEI, SAL PAVIA**

**AMANDA DOWNEY, JENNIFER ELYSE GELLER, MAUREEN KELLEY,  
CHRISTINA LASCHUK and BRYAN CHARLES MOORE**

Producer

**PAUL ALLAN**

Production Manager

**BRIAN LOESCH**

Associate Producer

**JEFF BELLANTE**

Casting Director

**MICHAEL BAKER**

Projection Design

**ZACHARY G. BOROYAY**

Company Manager

**BETHANY SORTMAN**

Costume Design

**GREGORY GALE**

Scenic Design

**BEOWULF BORRITT**

Associate Director

**MICHAEL MINARIK**

Lighting Design

**CHRISTOPHER LANDY**

Production Stage Manager

**SUZANNE APICELLA**

Musical Director

**ANDREW HAILE AUSTIN**

Directed and Choreographed by

**KEITH ANDREWS**

# Neighborhood style restaurant with globally inspired food

VISIT OUR NEW LOCATION  
65 EAST MAIN STREET, RIVERHEAD

Happy Hour M-F 3-7 pm | Specials  
Live Music Friday & Saturday 9 pm - 12 am



[perabellfoodbar.com](http://perabellfoodbar.com) | 631-447-7766  
69 E. Main Street, Patchogue Village

# THE CAST

(in order of appearance)

Lonny.....	GENSON BLIMLINE*
Justice.....	AMMA OSEI*
Dennis.....	JUSTIN COLOMBO*
Drew.....	ANTHONY FESTA*
Sherrie.....	EMILY BEHNY*
Father.....	ROB MARNELL*
Mother.....	AMMA OSEI*
Regina.....	KELLY FELTHOUS*
Mayor.....	JEREMY GASTON*
Hertz.....	STEVE BRADY*
Franz.....	MICHAEL LORZ*
Stacee Jaxx.....	ROB MARNELL*
Waitress #1.....	CHRISTINA LASCHUK
Reporter.....	AMANDA DOWNEY
Mayor/Ja'Keith/Strip Club DJ.....	JEREMY GASTON*
Joey Primo/Sleazy Producer.....	SAL PAVIA*
Candi.....	KELLY FELTHOUS*
Young Groupie.....	JENNIFER ELYSE GELLER
<b>Dance Captain.....</b>	<b>KELLY FELTHOUS*</b>

## ENSEMBLE

AMANDA DOWNEY, JEREMY GASTON\*, JENNIFER ELYSE GELLER\*, MAUREEN KELLEY,  
CHRISTINA LASCHUK, BRYAN CHARLES MOORE, AMMA OSEI\*, and SAL PAVIA\*

## UNDERSTUDIES

Lonny.....	MICHAEL MINARIK*
Drew.....	BRYAN CHARLES MOORE
Dennis.....	MICHAEL MINARIK*
Stacee Jaxx.....	SAL PAVIA*
Franz.....	BRYAN CHARLES MOORE
Hertz.....	MICHAEL BAKER*
Mayor/Ja'Keith.....	MICHAEL MINARIK*
Sherrie.....	AMANDA DOWNEY
Regina.....	JENNIFER ELYSE GELLER
Justice.....	CHRISTINA LASCHUK

## THE BAND

Conductor/Keyboard.....	ANDREW HAILE AUSTIN
Guitar 1.....	TOMMY KESSLER
Guitar 2.....	JOE LOSCHIAVO
Bass.....	MATTHEW BERMUDEZ
Drums.....	JON WEBER



\*Actors employed in this production are members of Actors' Equity Association, the union of Professional Actors and Stage Managers in the United States.



The Musicians employed in this production are members of the American Federation of Musicians.



The Director/Choreographer is a member of the Society of Stage Directors and Choreographers, Inc., an independent national labor union.

**42%** of American adults own a tablet computer

**58%** of American adults own a smartphone

**63%** of Internet traffic comes from mobile devices

**Is your website mobile-ready?**

\*Source: comScore

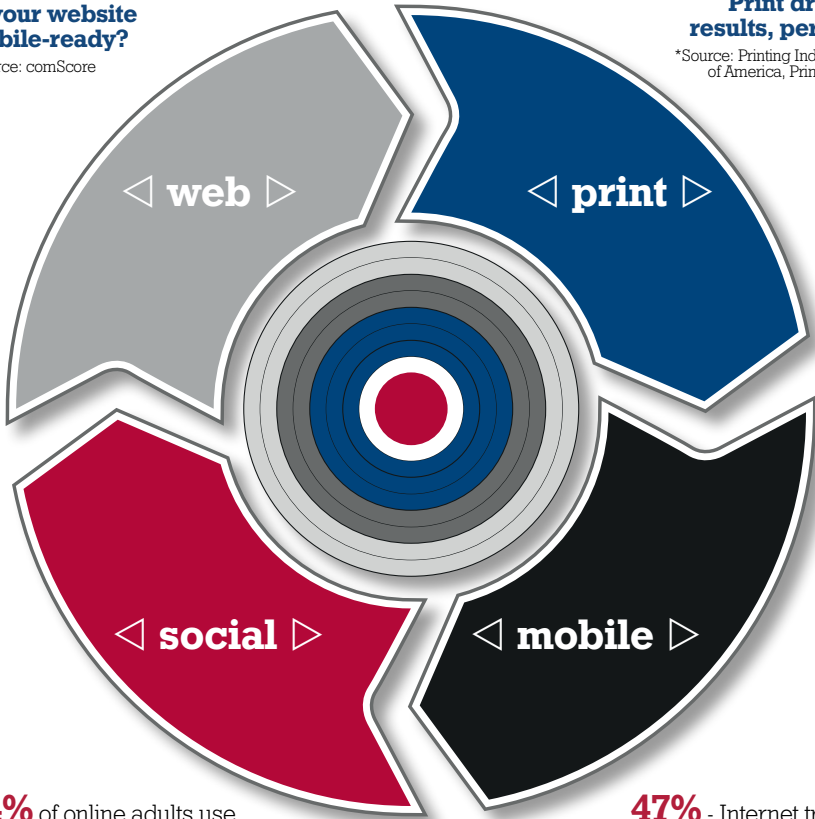
**67%** of online action is driven by offline messages.

**14%** - Increase in direct mail marketing response rates since 2004

**80%** of households read or browse their advertising mail

**Print drives results, period.**

\*Source: Printing Industries of America, Print is Big



**74%** of online adults use social networking sites

**Your customers are on social media, are they finding you?**

\*Source: Pew Research Center

**47%** - Internet traffic from native mobile apps

**45%** - Internet traffic from PCs

**Could your business benefit from a native app?**

\*Source: comScore

**Targeted solutions  
for your business.**



**SEARLES** 631 345 2202 | [www.searlesgraphics.com](http://www.searlesgraphics.com)  
**GRAPHICS**  [fb.com/searlesgraphics](https://fb.com/searlesgraphics)  [@searlesgraphics](https://@searlesgraphics)





# MUSICAL NUMBERS

## 🎵 ACT ONE

LIVIN' IN PARADISE / CUM ON FEEL THE NOIZE  
SISTER CHRISTIAN / MOTORIN'  
WE BUILT THIS CITY/TOO MUCH TIME ON MY HANDS  
I WANNA ROCK  
WE'RE NOT GONNA TAKE IT  
MORE THAN WORDS / HEAVEN  
I'VE BEEN WAITING FOR A GIRL  
DEAD OR ALIVE  
I WANT TO KNOW WHAT LOVE IS  
CUM ON FEEL THE NOIZE / WE'RE NOT GONNA TAKE IT  
HARDEN MY HEART / SHADOWS OF THE NIGHT  
HERE I GO AGAIN

---

## 🎵 ACT TWO

THE FINAL COUNTDOWN  
ANY WAY YOU WANT IT / I WANNA ROCK  
HIGH ENOUGH  
BEAVER HUNT  
HATE MYSELF FOR LOVIN' YOU / HEAT OF THE MOMENT  
HIT ME WITH YOUR BEST SHOT  
CAN'T FIGHT THIS FEELING  
EVERY ROSE HAS ITS THORN  
KEEP ON LOVIN' YOU  
OH SHERRIE  
THE SEARCH IS OVER  
RENEGADE  
DON'T STOP BELIEVIN'

# CHET MITRANI PLASTERING, LLC

*Four Generations of Quality Craftmanship*

TRADITIONAL 3 COAT PLASTER | VENETIAN PLASTER  
ORNAMENTAL PLASTER | CEMENT STUCCO  
SPRAY FIREPROOFING | VENEER PLASTER | LATHING | EIFS

## CHET MITRANI

Office: 631.468.3150 Fax: 631.468.3152 Email: chet@emitraniplastering.com

1337-7 Lincoln Avenue, Holbrook, NY 11741



567 SOUTH OCEAN AVE  
PATCHOGUE, NY  
631-307-9999

## South Ocean Grill

FINE CASUAL DINING BY THE BAY

**COME DINE WITH US!!**

*Executive chef "H" and his staff look forward to serving you!!!*

**SPECIALTY WINE | CRAFT BEERS**

ARTISAN BREAD MADE ON PREMISES | MARKET SALADS WITH SEASONAL VEGETABLES  
DELICIOUS FRESHLY GROUND BURGERS | HAND SELECTED STEAKS AND FISH  
HOUSEMADE DESSERT SELECTION

**TUESDAY -SUNDAY – LUNCH 11:30-3:00 – DINNER 5-10**

Visit our website for updated Menus: [www.southoceangrill.com](http://www.southoceangrill.com)

# WELCOME TO OUR 2015 SEASON AT

*The Gateway*  
PERFORMING ARTS CENTER OF SULLY COUNTY



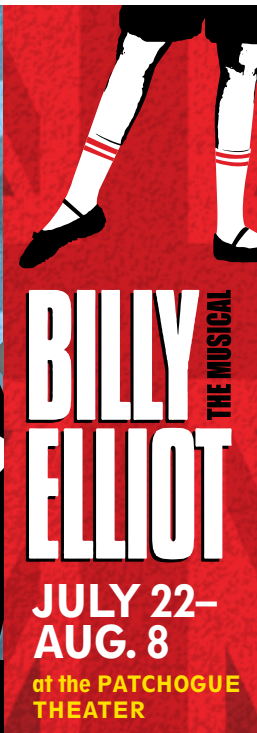
**JUNE 10–  
JUNE 27**

at the GATEWAY  
PLAYHOUSE



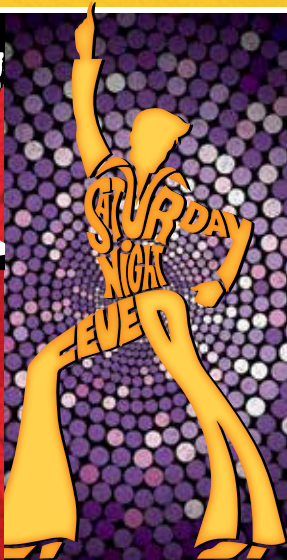
**JULY 1–  
JULY 18**

at the GATEWAY  
PLAYHOUSE



**JULY 22–  
AUG. 8**

at the PATCHOGUE  
THEATER



**AUG. 26–  
SEPT. 12**

at the GATEWAY  
PLAYHOUSE

Make **YOUR** tickets work for **YOU** with the

# 3-4-5 PLAN

**IT'S SIMPLE.**

You pick the dates, you pick the times,  
you pick the number of shows.

**PICK ANY 3**

**SAVE \$5 OFF  
EACH SHOW**

**PICK ANY 4**

**SAVE \$10 OFF  
EACH SHOW**

**PICK ANY 5**

**SAVE \$15 OFF  
EACH SHOW**

**Limited time offer. ORDER TODAY!**

\*Adult tickets only. Not to be combined with other offers. Valid only on main stage productions.



**EMILY BEHNY** (*Sherrie Christian*) is so excited to rock out with you! National Tours: *Wicked* (Nessarose), *Beauty and the Beast* (Belle), *Goodspeed's Something's Afoot* (Hope u/s) and *Circus in Winter* (Irene). B.A. Ball State University 2010. Thanks to the entire Gateway team,

Henderson Hogan Agency, Mom, Dad, and her love Adam. "Dare Greatly."



**GENSON BLIMLINE** (*Lonny Barnett*) Broadway/NYC: *Rock of Ages* (Lonny), *South Pacific* (LCT Tony award winning original cast), *The Searchers* (Atlantic Theatre Company), *Waitress* (dir. Diane Paulus), *Dee Snider's A Very Twisted Christmas*.

Nat'l Tours: *South Pacific*, *A Chorus Line*, *Smokey Joe's Cafe*, *Grease*, and *Footloose*. Much love to my wife Jacqueline, daughter Sophia, and daughter número dos who is arriving in just a few weeks! @genson11www.gensonblimline.com



**STEVE BRADY** (*Hertz Klinemann*) is happy to be back at Gateway. You've seen him in *Singin' in the Rain*, *White Christmas*, *My Fair Lady*, *Hello Dolly!*, *A Christmas Carol: The Musical*, *Urinetown*, and *The Fantasticks*. He's been on Broadway, *Inherit the Wind*; Off-Broadway, *Bill W. and Dr. Bob*, *The Power of Darkness*, *Poor Beast in the Rain*. Steve toured nationally in *The Exonerated*, the world with *West Side Story*, and Germany as Scrooge in *A Christmas Carol*. He's worked regionally at Cincinnati Playhouse, Rep Theatre of St. Louis, Shakespeare Theatre DC, Syracuse Stage, Papermill Playhouse, The Wilma, Triad Stage, Royal Alexandra, TheatreWorks Palo Alto and many more. For Buddy. Good Dog!



**JUSTIN COLOMBO** (*Denris Dupree*) Justin's childhood dream was to play for the Boston Red Sox, but he couldn't hit a curveball to save his life. Credits: *Rock of Ages* (National Tour, Canada and Asia), *Ragtime*, *Fiddler on the Roof*,

*Girlfriend from Hell*, *Much Ado About Nothing*, *Songs For a New World*, *Coram Boy*, *The Wedding Singer*. Training: Ithaca College, The Moscow Arts Theatre. Thanks to the Cast & Crew, The Roster, ZOLL, Jo and his parents.



**AMANDA DOWNEY** (*Constance/Ensemble/u/s Sherrie*) is beyond stoked to make her Gateway Playhouse debut! Past favorite credits include: *Crazy for You* (Polly), *Marvelous Wonderettes* (Cindy Lou), *I Love You, You're Perfect*,

*Now Change* (Woman 1), *BatBoy* (Shelley), *9 to 5*, *Spamalot*, and Irving Berlin's *White Christmas*. Big thanks to Michael and Keith for this wonderful opportunity and this awesome cast she gets to ROCK with every night. To her dreamy husband- I love you, this is for you! Psalms 73:24 Follow her on Twitter @TheAmandaDowney.



**KELLY FELTHOUS** (*Regina/Candi*) is ready to rock out with this amazing cast in her Gateway debut! She has originated roles in *Bring it On* (Eva), *Flashdance* (Gloria), *Max and Ruby* (Ruby), and *Trip of Love* (Caroline). Other credits

include: National Tours/Off-Broadway: *Wicked* (Galinda/Nessa u/s), *Grease* (Marty), and *Seussical* (Mayzie). Regional favorites include *South Pacific* (Nellie), *Legally Blonde* (Elle), *A Chorus Line* (Val), *Singing in the Rain* (Kathy), and *Gypsy* (June). NYU Alum. Thanks Mark, Mom, Charns, Henderson Hogan and the *Rock of Ages* Family! Let's Do This!!!





**ANTHONY FESTA** (*Drew Boley*) is ready to rock out the Bourbon Room at Gateway! Credits: Tony in *West Side Story* (West End/UK Tour), *Bare* in NYC, *How Deep is The Ocean* at NYMF, *Billy Elliot*, *South Pacific*, *Hairspray*, *The Full Monty*

and *I Am Harvey Milk* at Avery Fischer Hall. Anthony thanks Nani/Saperstein, his family and most of all, his Mother for teaching him rock and roll by taking him to his first rock concert. Let's rock!



**JEREMY GASTON** (*Mayor/Ja'Keith/Strip Club DJ*) is thrilled to be a part of this rock'n show. National/International tour: *Smokey Joe's Cafe* 20th Anniv. (Victor u/s), *Sister Act* 1st nat'l (Eddie, Curtis, TJ u/s), *Shrek* (Donkey), *Sunfish* (Monk,

Storyteller), *Jesus Christ Superstar* (Priest u/s, Apostle). Regional: *Once On This Island* (Daniel), *Rent* (Benny), *Grease* (Teen Angel, Johnny Casino), *The Buddy Holly Story* (Apollo Performer). TV: Guest appearance on *Good Morning America with Katie Couric*. Jeremy holds a BFA from Wright State University. A special thanks to Daniel Hoff Agency, Michael Baker, cast & crew. Much love to Mom, Nana, family & friends for their amazing support. Thank you Jesus! James 4:10



**JENNIFER ELYSE GELLER** (*Young Groupie/ Ensemble/u/s Regina*) is unbelievably ecstatic to be rocking out on the Gateway stage! A brand spankin' new NYC resident, Jennifer has recently finished traveling the world with the

Broadway International Tour of *Bring It On: The Musical* playing the role of Nautica! The blessings just keep coming, with all the gratitude in the world to the parental units, Chris, and of course, the Gateway team!



## The Big Picture.

Our State-of-the-art Interventional Cardiac Catheterization Laboratory Saves Lives.

Cardiac catheterization enables Brookhaven cardiologists to visualize and assess the condition of the coronary arteries, providing necessary information for treating blockages with medication, balloon angioplasty or stent placement. It is an essential tool that provides expert emergency care to patients who may be experiencing a heart attack or other cardiac issues. For Long Island's South Shore, cardiac care never looked better.

### Excellence Goes Far Beyond Cardiac Care at Brookhaven Memorial Hospital.

Breast Imaging, Stroke, Bariatric & Wellness, Wound Care and Hyperbaric Medicine are all recognized Centers of Excellence at Brookhaven. Brookhaven Hospital is the proud recipient of the 2014 Stroke Gold Plus Achievement Award, the 5 Diamond Patient Safety Award, and the Home Care Elite Award. And best of all, since Brookhaven is our community hospital, this level of care is as convenient, as it is compassionate.



Memorial Hospital Medical Center

101 Hospital Road, Patchogue, NY 11772  
(631) 654-7100 • [www.brookhavenhospital.org](http://www.brookhavenhospital.org)

AFTER THE SHOW

# STROLL THE VILLAGE OF

Sign up for Bellport Chamber Discount Card and SAVE!



[WWW.BELLPORTCHAMBER.COM](http://WWW.BELLPORTCHAMBER.COM)

## DON'T LET PAIN Interfere With Your Life!



Providing Relief for: Postural Problems  
and Pregnancy Related Back Pain  
We use Rock Tape Kinesio-Tape  
Neck and Back Pain | Headaches  
TMJ Pain | Sciatica | Scoliosis

Merckling Family Chiropractic, P.C.  
16 Station Road, Suite 2, Bellport Village  
631-286-2300 | [www.mercklingdc.com](http://www.mercklingdc.com)

## ROYAL OAK DINER

BREAKFAST, LUNCH AND  
DINNER DAILY

Complete Early Bird Dinners 3-5:45pm  
Complete Dinner Specials starting at \$12.95  
Lunch Specials Daily starting at \$6.95 11am-3pm  
Try our Panini Menu starting at \$8.95

900 Station Road, Bellport  
631-286-5757



[www.papanickspizzeria.com](http://www.papanickspizzeria.com)

Home of the Crispy Crust • Daily Specials

631-286-6400

117C South Country Road | Bellport Village



Objects of curiosity, distinctive gifts,  
uncommon jewelry, graceful flower bouquets,  
specialty clothing, interior design specialists....

631.431.6825  
[www.gionaso.com](http://www.gionaso.com)

151 South Country Rd.  
Just down the road from the theater in Bellport



Celebrating over 30 years  
of business, since 1984



An Established  
Tradition of Service

322 S. Country Rd., East Patchogue  
(631) 289-5550 | [www.swanproperties.com](http://www.swanproperties.com)

Licensed RE Broker David J. Rice

Bellport's Premier MLS Agency

RICE  
REALTY  
GROUP Inc.

SALES - RENTALS - COMMERCIAL  
Tel: (631) 624.1200 [www.ricerealty1.com](http://www.ricerealty1.com)

# BELLPORT.



## THE BELLPORT

Steps away from the Gateway Playhouse



New York Times Review

159 South Country Road, Bellport, New York 11713  
(631) 286-7550



**IT'S IN THE DETAILS**

**EXPERT AUTO  
COLLISION REPAIRS**

ALL INSURANCE ACCEPTED



1791 MONTAUK HIGHWAY  
BELLPORT, NY 11713

**286-2116**



*Supporting our schools, local community  
services and local businesses!*

Member of the Bellport  
Chamber of Commerce

# TOLA.



A SMALL TOWN BOUTIQUE WITH A BIG TIME VIBE



136 South Country Road • Bellport Village, NY  
www.tolanewyork.com • 631-286-0186

## It's Only Natural

ORGANIC MARKET & NATURAL PHARMACY

Vitamins ~ Supplements  
Produce ~ Grocery  
Home ~ Beauty  
~ Salads  
~ Juices



118 South Country Rd  
Bellport, NY

## YOUR AD HERE



ADVERTISE IN  
THE GATEWAY'S  
NEXT PLAYBILL



CONTACT PAM YOUNG  
pam.young@searles.media  
631.345.2202 | [gatewayplaybill.com](http://gatewayplaybill.com)



**MAUREEN KELLEY** (*Ensemble*) is ready to let her hair down and make her Gateway Playhouse debut in *Rock of Ages!* Favorite credits include *7 Brides for 7 Brothers* (Ruth), *A Chorus Line* (Judy Turner), *42nd Street*, *The Producers*, *Wonderful Town*, *Mack and Mabel* and *The Nutcracker* (Sugar Plum Fairy). Maureen holds a BFA in Dance from the University of Michigan. MaureenKelley.net



**CHRISTINA LASCHUK** (*Waitress #1/Ensemble/u/s Justice*) was recently seen in *La Cage aux Folles* and *Mame* at the Wick Theater. Last summer she performed in *A Chorus Line* (Surflight Theater), *A Chorus Line* (Tibbits Opera House), and *in Some Enchanted Evening* (Surflight Theater). She has performed with *Inside Broadway* in Manhattan. Christina also toured in the National Tour of *Oklahoma!* Other credits include *Sugar* (Westchester Broadway Theater), *High School Musical* (La Comedia), *Beauty and the Beast* (Surflight Theater), and *Chicago* (Little Theater on the Square), and a world cruise tour on Regent Luxury Cruise Lines. Thank you Chris, my family, and friends for your constant love and support!



**MICHAEL LORZ** (*Franz Klinemann*) is a recent graduate of NYU - CAP21 and is making his Gateway debut! Recent credits include *Into the Woods* (Jack) at Northern Stage, *Clown Bar* at The Box, *Swiss Family Robinson* at NYMF, and *Gross Indecency* at the Abingdon. "A dream doesn't become reality through magic; it takes sweat, determination, and hard work." - Colin Powell. [www.michaellorz.com](http://www.michaellorz.com)



**ROB MARNELL** (*Stacee Jaxx/Father*) is ecstatic to be joining the Gateway family! He was last seen as Bob Gaudio in *Jersey Boys* at the Paris, Las Vegas and played Joe Long in Clint Eastwood's film version. Rob originated the role of

Alex in Dreamwork's National Tour of *Madagascar Live* and has worked in several regional theatres across the U.S. He is the drummer for the NYC-based-cover-band-trio "Poppy's Suitcase." For Kingston and my new wife!



**BRYAN CHARLES-MOORE** (*Ensemble/u/s Drew, Franz*) is thrilled to be returning to rock out at Gateway. A native of St. Paul, MN, Moore received a BA in Ballet Performance from Saint Mary's University in Winona, MN. Credits:

*The Radio City Christmas Spectacular* (Shine Tour), *Mary Poppins* (Gateway Playhouse/Ogunquit Playhouse), *Sweet Charity* (National Tour), *Fiddler on the Roof* (Virginia Rep.), *West Side Story* (Ogunquit Playhouse), *Disney's High School Musical* and *Fashion 47* (CTC, Minneapolis). Thanks to my parents for raising me on classic rock!



**AMMA OSEI** (*Justice/Mother*) Broadway: *Rock of Ages* (Justice). National/International Tours: *Rock of Ages* (Justice), *Fame* (Ms. Sherman). Regional Credits: *Crowns* (Wanda), *Seussical* (Sour Kangaroo), *Big River* (Alice), *Ain't Misbehavin'* (Armelia), *All Shook Up* (Sylvia), *Little Shop...* (Ronette) *The Who's Tommy* (Acid Queen), and *A Christmas Carol* (Ghost of Christmas Present). Thanks to Whole Artist Management, The Mine and to my friends and family for your guidance, support and belief in me. @AmmaOseiNYC





**SAL PAVIA** (*Joey Primo/Sleazy Producer/Ensemble/u/s Stacey Jaxx*) Gateway Playhouse debut! Sal's a native New Yorker, and a graduate of Wagner College where he earned a B.A. in Theatre Performance. Off Broadway: *My*

*Big Gay Italian Wedding/Funeral*. Tours: *Legally Blonde* (Emmett), *Brigadoon* (Charlie). Regional: *tick, tick... BOOM* (Jon), *Footloose* (Ren), *A Chorus Line* (Al), *All Shook Up* (Chad). Thanks to Mom, Dad, and my beautiful fiancé Kaitlyn, for being the best fan club a guy could ask for. Let's rock!

**KEITH ANDREWS** (*Director/Choreographer*) is head-bangingly stoked to be back at The Gateway and reliving the 80's with *Rock of Ages*. Last season, Keith directed and choreographed *The Addams Family* at Bellport and *South Pacific* at the Patchogue Theater. Other productions at Gateway include *Spamalot*, *My Fair Lady*, *9 to 5- the Musical* (starring Sally Struthers), *The Full Monty*, *Dirty Rotten Scoundrels* (starring Joe Piscopo), *The Wedding Singer*, *My Way* (*A Musical Tribute to Frank Sinatra*), *Cold as Ice*, *Urinetown*, *2009's Holiday Spectacular on Ice*, *Happy Days*, and *Avenue Q*. He has directed the National Tours of *The Full Monty* and *Hello Muddah, Hello Fadduh*. Other recent directing/choreography credits include: *Young Frankenstein*, *The Drowsy Chaperone*, *The 25th Annual... Spelling Bee*, *Dames at Sea*, *Breaking Up is Hard to Do*, *Barnum*, *Pump Boys and Dinettes*, *Little Shop of Horrors*, *The Pirates of Penzance*, *Big River*, and *Forever Plaid*, to name just a few. As a choreographer, Keith has recently worked on *The Gig* at the New York Musical Theater Festival, and the world premiere of *Love, Incorporated*. He received an Innovative Theater Award for Best Production of a Musical and nomination for Best Choreography for his work on the show *Like You Like It*. On the ice, Keith has directed and choreographed *Home for the Holidays- a Celebration on Ice*, starring 2014 Olympic Gold Medalists Charlie White and Meryl Davis, and 2010 Olympic Gold Medalist- Evan Lysacek, as well as two productions of *Stars, Stripes and Skates*, a benefit on ice to support survivors and families of 9/11. As a performer, Keith has toured all over the world with shows such as: *West Side Story*, *Mame*, *Jesus Christ Superstar* and the *Radio City Christmas Spectacular*. In educational theater, Keith directs and choreographs student industry showcases at the American Musical and Dramatic Academy in NYC as well as having directed many musicals at

# WHO'S WHO

the USDAN Center for the Performing Arts, here on Long Island. Thanks to Paul and Michael B for everything and more, to Michael M and Vince for their invaluable help, and of course to Amy too! Check out the new release of - KeithAndrewsonline.com.

**SUZANNE APICELLA** (*Production Stage Manager*) Broadway: *Burn the Floor*, *Fun Home*; National Tours: *Kinky Boots*, *Rock of Ages*, *Spamalot*, *Sweeney Todd*, *The Producers*, *The Addams Family*; NYC: *Dr. Seuss' How the Grinch Stole Christmas* (MSG), *Dee Snider's: A Very Twisted Christmas*; Regional: *Carnival* (Goodspeed), *Metamorphoses*, *The Goat...* (FST), *Toys in the Attic* (Pearl).

**ANDREW HAILE AUSTIN** (*Music Director*) *Rock of Ages* marks Andrew's sixth show at Gateway Playhouse. As a composer, pianist, and conductor, he travels the country working for many theatres and schools. After graduating from college, Andrew moved to NYC where he worked at several arts schools while free-lancing as a conductor in the New York area. Since that time, he has music directed almost 100 productions of operas and musicals across the country. Currently, he is pursuing his doctorate of music composition at the Peabody Institute of Johns Hopkins University, studying with Kevin Puts and acts as composer-in-residence for the Tidewater Opera Initiative in Norfolk, VA. [www.andrewhaileaustin.com](http://www.andrewhaileaustin.com)

**MICHAEL MINARIK** (*Associate Director*) is a Tony nominated producer of *Rock of Ages* (Broadway, Toronto, National Tour and Australia). He has also produced *The Scene* at second stage with the Araca Group starring Patricia Heaton and Tony Shaloub. He is the lead producer along with Carl Levin of *Fat Camp the Musical*. Michael received his equity card at Gateway Playhouse in 2001.

**CHRISTOPHER LANDY** (*Lighting Designer*) is always thrilled to return to Gateway, where past designs include *Beauty and the Beast*, *Oliver*, *Urban Cowboy*, *Phantom*, *Tommy* (CT Critic Circle Award), *Jekyll & Hyde*, *Showboat*, *West Side Story*, *Brigadoon*, *Cabaret*, and *Crazy For You*. His theatre and opera credits include *A Little Night Music for Goodspeed*; *Rosencrantz and Guildenstern are Dead* for Long Wharf and Williamstown; *Hay Fever*, *Princess*

# WHO'S WHO

*Turandot* and *Angel Street* for Westport Country Playhouse; *Altar Boyz*, *Smokey Joe's Café* and *Hot N' Cole* for Riverside Playhouse, *Orfeo ed Euridice* and *Turandot* for Virginia Opera and *Madame Butterfly*, *Marriage of Figaro*, *Die Fledermaus* and *Rigoletto* for Boheme Opera. Off-Broadway credits include *Oedipus*, *Hotel Universe*, *Princess Turandot*, *Ivanov*, and *Retribution*. Landy works extensively in television and is the owner and principal designer of Vibrant Design whose clients include NBC, CBS, MTV, MTV2, VH1, Comedy Central, LOGO, Oxygen, Food Network, AMC, FUSE, Style Network, NBATV, MSNBC, CNN, and CMT among others. Shows of note are *The Tonight Show starring Jimmy Fallon*, *Late Night w/ Jimmy Fallon*, *Lip Sync Battle*, *Totally Biased w/ W. Kamau Bell*, *The Marriage Ref*, *The Job*, *Food Network Challenge*, *Tough Crowd with Colin Quinn* and countless MTV shows starting with *Total Request Live with Carson Daly*. Chris' musical background has led him to light concert performances for the likes of Jay-Z, U2, REM, LL Cool J, Justin Timberlake, John Legend, Katy Perry, Lady Gaga, Britney Spears, Christina Aguilera, Dave Matthews and Beck, to name a few. He received an Emmy award for his lighting of *MTV's Unplugged with Katy Perry*. He also received an Emmy Nomination for his work on MSNBC's coverage of the 2004 Election. His work can be seen here at [www.vibrantdesign.com](http://www.vibrantdesign.com).

tv. Chris, being the luckiest man alive, is fortunate enough to have married the beautiful and talented production designer Ellen Waggett. Besides Vibrant Design, they have produced two amazing children: Max and Samantha. Last count they had two dogs, two cats, and four chickens.

**ZACHARY G. BOROVAJ** (*Projection Design*). Selected Broadway credits: *Rock of Ages* (also London, Australia, Las Vegas, Toronto, Norwegian Cruise Line, National & UK tours), *Holler If Ya Hear Me*, *No Man's Land*, *Waiting for Godot*, *Ann*, *Evita* (also National tour), *Elf*, *Lombardi* (Drama Desk nom.), *A Catered Affair* (Drama Desk nom.) and *Xanadu* (also National tour, Japan). Recent regional credits: *The Colored Museum* (Huntington Theatre Co), *Chaplin* (La Jolla Playhouse), and *Nerds* (Philadelphia Theatre Co.). Additional credits include *The Radio City Music Hall Christmas Spectacular*, *Peepshow* (Las Vegas) and *Voyage de la Vie* (Singapore). Zachary is on the Board of Trustees for United Scenic Artists Local 829 and is also an accomplished bassist (Berklee College of Music).



**Avino's**  
**ITALIAN TABLE**

**Stop In Before or After the Show**  
**OPEN 7 NIGHTS A WEEK**

108 South Country Road, Bellport Village • 631-803-6416  
[AvinosItalianTable.com](http://AvinosItalianTable.com)

## Swan Bakery

All Occasion Cakes • The Official Bakery of Gateway Playhouse  
Guy Gagliano

15 South Country Rd. • East Patchogue, NY 11772 • (631) 475-9626

# A PUB OF THE OLD STYLE

*Pub Fare That Will Make Your Tongue Smile*



*Relax Before or After The Show — Full Bar & Menu*

Kitchen Open 11 AM to 11 PM (Mon. thru Sat.) — Bar 'til 1 AM

70 North Ocean Avenue • Patchogue • (631) 289-1900 • [www.reeses1900pub.com](http://www.reeses1900pub.com)



## STAGE DOOR SCHOOL OF Dance

*Serving the Greater Patchogue Community for 40 Years!*

**Classes for Everyone from 18 Months Old to Adults,  
from Beginners to Advanced Dancers!**

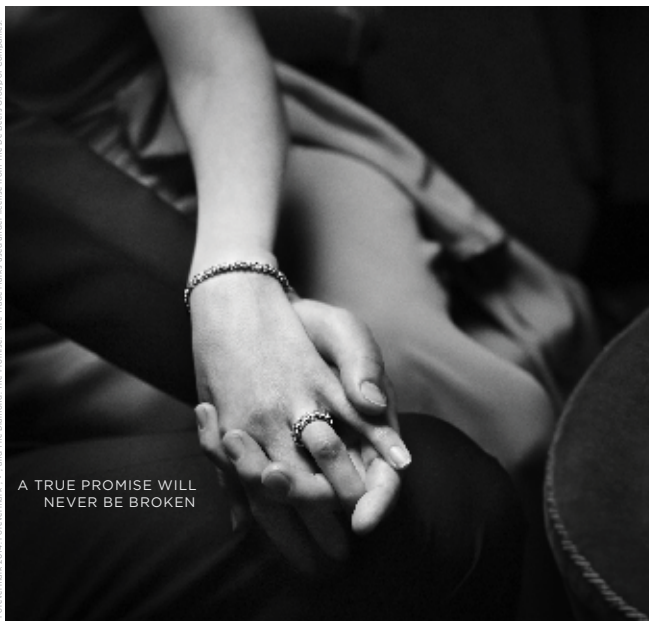
*-Jazz  
-Hip Hop  
-Acro  
-Ballet  
-Lyrical  
-Modern  
-Musical Theatre  
-DanceAbility  
-Pre-School*

**Check out our Amazing Summer Schedule  
and Register Online Today!**

*Owned by Broadway Vets  
Mary Giattino-Styles  
and Rick Styles!*

655-19 Montauk Highway  
E Patchogue NY 11772  
631.654.8858  
[www.stagedoordancer.com](http://www.stagedoordancer.com)

© Forevermark, 2014. Forevermark, Forevermark's, and The Diamond, The Promise, are trademarks used under license from The De Beers Group of Companies.



A TRUE PROMISE WILL  
NEVER BE BROKEN

FOREVERMARK



THE DIAMOND. THE PROMISE.



*Kay*  
*Cameron*  
FINE  
JEWELRY

48 Main Street, Sayville  
631-567-1698

Ni tro  
Boo M  
s tout



**BRICKHOUSE BREWERY**

67 WEST MAIN, PATCHOGUE NY  
(631) 447-BEER • BRICKHOUSEBREWERY.COM



Gateway's

# DISCOBALL

5<sup>TH</sup> ANNUAL GALA

*A celebration of the 70's with special sneak peek selections from  
our final production - Saturday Night Fever*

**SATURDAY, AUGUST 22, 2015  
AT 6:00 PM**

Tickets available at [Gatewayplayhouse.org](http://Gatewayplayhouse.org)  
or by calling **631-286-1133**



## CHILDREN'S THEATER

Fun for the Whole Family • Tickets starting at \$12



Produced by  
Theatreworks USA  
at the Gateway  
Playhouse  
**JUNE 21  
ONLY**



A Gateway production  
at The Gateway  
Playhouse  
**JULY 3-  
JULY 18**



A Gateway  
production  
at The Patchogue  
Theatre  
**JULY 24-  
AUG. 8**



Amazing Off-  
Broadway Illusion  
at The Patchogue  
Theatre  
**AUG. 14  
ONLY**

Children age 2+ only. Every child must enter with a purchased ticket. Seating is reserved. Discounts available for groups of 25+. \*All shows & dates subject to change.

# ROE AGENCY INC.

Over A Century of  
**COMMITMENT**

Since 1898

## ALL FORMS OF INSURANCE

*PERSONAL and  
COMMERCIAL*

*Call us for a quote!*

125 East Main St., Patchogue, NY 11772  
p: 631.475.4000 f: 631.475.7648



## OVERLOOKING THE GOLF COURSE

Breakfast & Lunch • Tuesday–Sunday

Dinner • Friday & Saturday

**HAPPY HOUR**  
TUESDAY–SUNDAY, 3–6 P.M.

Outdoor Seating • Everyone is Welcome

Located by the 9th hole at the  
Bellport Country Club

(631) 803-8440

40A S Country Rd • Bellport, NY



## RELEVÉ DANCE CENTRE

33B Montauk Hwy.  
Blue Point, NY 11715  
631.472.9322  
www.relevedance.com  
e: rdc889@aol.com

*Her dream becomes reality  
Her passion is ignited  
Her future is bright*

- Acro •
- Ballet/Pointe •
- Hip-Hop •
- Jazz •
- Lyrical/Contemporary •
- Modern •
- Tap •



Reach for HOPE  
**Quannacut**  
Where Recovery Happens

**Eastern Long Island Hospital**

201 Manor Place • Greenport, NY • www.ELIH.org

**477.8877** Inpatient **369.8966** Outpatient

## Ruland FUNERAL HOME, INC.

Caring for Families like yours since 1856

**David Romeo**  
Owner-Director

**Our Directors:**

Vanessa C. Zenz  
Daniel G. Prunty  
Richard J. O'Shea, Jr.

**631-475-0098**

www.therulandfuneralhome.com  
office@therulandfuneralhome.com

500 North Ocean Avenue, Patchogue NY 11772

# JIM'S DELI

*Catering for all Occasions*



(631) 286-2333

2478 Montauk Hwy • Brookhaven, NY 11719

**WARNING:** The photographing or sound recording of any performance is strictly prohibited.

**FIRE NOTICE:** The exit indicated by a red light and sign nearest to the seat you occupy, is the shortest route to the outside. In the event of fire or other emergency, please do NOT run. WALK to that Exit. However, under normal circumstances, when leaving the Theatre, use the center rear exits. **SMOKING** is prohibited in the **BUILDING**, as required by the Suffolk County **NO SMOKING Ordinance**. Smoking in any area designated "No Smoking" renders the offenders subject to a fine, or imprisonment, or both.



*"Break a leg..." Theatre actors and guests ...*

*"Break a crab leg" before 'n' after your show !!*

**HARBOR CRAB CO.**  
**RESTAURANT & MARINA**

**116 DIVISION STREET • PATCHOGUE NEW YORK**  
**631.687.CRAB (2722) www.harborcrab.com**

**WATERSIDE DINING**

The **Oar**

**Steak & Seafood Grill**

**THE FINEST & FRESHEST SEAFOOD**

Enjoy Sunset Cocktails at Our Outdoor Gazebo Bar

Live music Friday and Sunday • Open Year Round Lunch & Dinner • Summer 7 days Winter 6 days

 **LATITUDE 121**  
— COASTAL GRILL —

**Come Visit Us at Our Second Location • Latitude 121 Coastal Grill**  
121 Main Street • Stony Brook, NY 11790 • (631) 675-9264



**264 WEST AVENUE, PATCHOGUE (631) 654-8266 THEOAR.COM**

*Richard York*   
OF PATCHOGUE



## SHOES

From Patchogue Theatre  
entrance, 1 block west  
and four stores south

Caring & Knowledgeable Service  
Sizes & Widths up to EEEEE

### Quality Footwear Since 1927

Comfortable Shoes, Sneakers, Sandals, Boots,  
Slippers & Socks for Men Women & Children

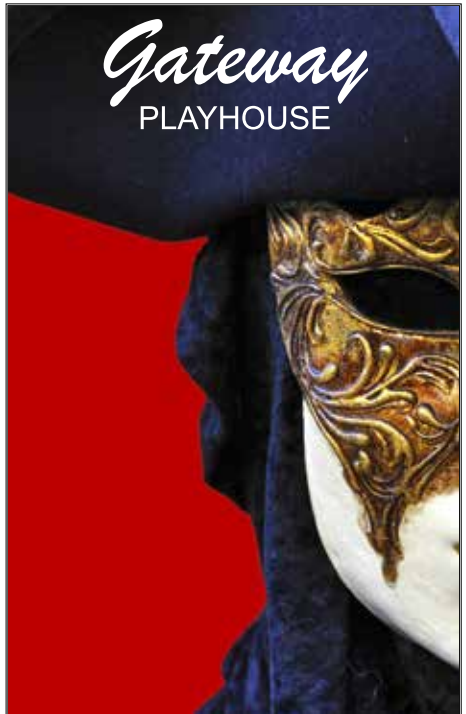
[WWW.RICHARDYORKOFPATCHOGUESHOES.COM](http://WWW.RICHARDYORKOFPATCHOGUESHOES.COM)

14 South Ocean Ave • Patchogue, NY 11772  
631-475-1047

Rockport, Easy Spirit, Florsheim, New Balance, Stride Rite,  
Teva, Timberland, Skechers, Ros Hommerson, Hoffer,  
Keds, Reebok, Dyeables, Topsider, Soft Spots, Clarks,  
Naturalizer, Hush Puppies, Daniel Green, Foamtreads,  
Toe Warmer Boots, Fifflop, Walking Cradles, etc.

**10% off any purchase with ad only**

Excludes Dr. Martens & other offers. Expires 12/31/15



Suffolk County National Bank,  
Long Island's true community  
bank, is proud to support  
Long Island's oldest  
professional theater,  
*The Gateway Playhouse.*

CELEBRATING

125  
YEARS



The Bank for Business<sup>SM</sup>

[scnb.com](http://scnb.com)

Branch locations throughout  
Long Island including  
2801 Route 112, Suite B  
Medford • 631.758.1500

Member FDIC

*American Dance Theatre of Long Island*  
Presents



*Clara's Dream*  
**The Nutcracker**

December 4-6

at The Patchogue Theatre for the  
Performing Arts

Tickets \$15.00 - \$32.00 Available at  
[www.patchoguetheatre.com](http://www.patchoguetheatre.com) or call 1-877-77CLICK

ADTLI is a Not-For-Profit Arts Organization



# CLARE ROSE PLAYHOUSE

## SUMMER 2015 SCHEDULE



**July 24-26**

The improvised musical comedy of  
***On the Spot with Stacked***

8 p.m. Friday and Saturday; 3 p.m. Sunday

Cost: \$15 general admission; \$12 for students and seniors

**Clare Rose Playhouse**

St. Joseph's College  
155 West Roe Boulevard  
Patchogue, NY 11772

For more information, call the playhouse box office  
at 631.654.0199 or visit [sjcny.edu](http://sjcny.edu).



# Swezey

FUEL CO., INC. - EST. 1919

## Suffolk's Largest Family Owned Energy Company

- Heating & Air Conditioning
- Automatic Oil Delivey Service
- 24-Hour Emergency Service
- Budget Plans that Pay You Interest
- Expert Installations of Boilers, Burners, Hot Water Heaters & Air Conditioning Equipment



# 475-0270

51 RIDER AVE., PATCHOGUE



## MVPAUTOMOTIVE Service Center

*MVP would like to congratulate everyone at The Gateway for a wonderful summer of shows in 2015!*



Inspections • Check Engine Lights  
Oil Changes • Tune-ups • Brakes • Tires  
Exhausts • Dealer Services  
& so much more...



### We Proudly Service



CELEBRATING 14 YEARS IN BELLPORT VILLAGE  
OPEN MON.-SAT. 8AM-5PM

152 SOUTH COUNTRY RD,  
BELLPORT VILLAGE, NY



[www.mvpautomotive.com](http://www.mvpautomotive.com)  
Complete Auto Care for Foreign & Domestic Vehicles

# Bella

Cocktails

Chocolate & Cheese Fondue

Cheese Boards / Panini & Flatbread

Hummus & Vegetable Platters

Make Your Own S'mores

Quesadillas & Taco Cupcakes



Live Music Thursday, Friday & Saturday from 8 p.m.

Psychic Night - Tuesdays

Happy Hour Monday-Saturday, 5p.m.-8p.m.

1/2 price drinks and 15% off menu items

23 South Ocean Avenue Patchogue  
631-569-2397

[www.facebook.com/BellaVinoPatchogue](http://www.facebook.com/BellaVinoPatchogue)

Want to be on stage?  
**NOW ENROLLING**

  
**THE Gateway**  
PERFORMING ARTS CENTER OF SUFFOLK COUNTY

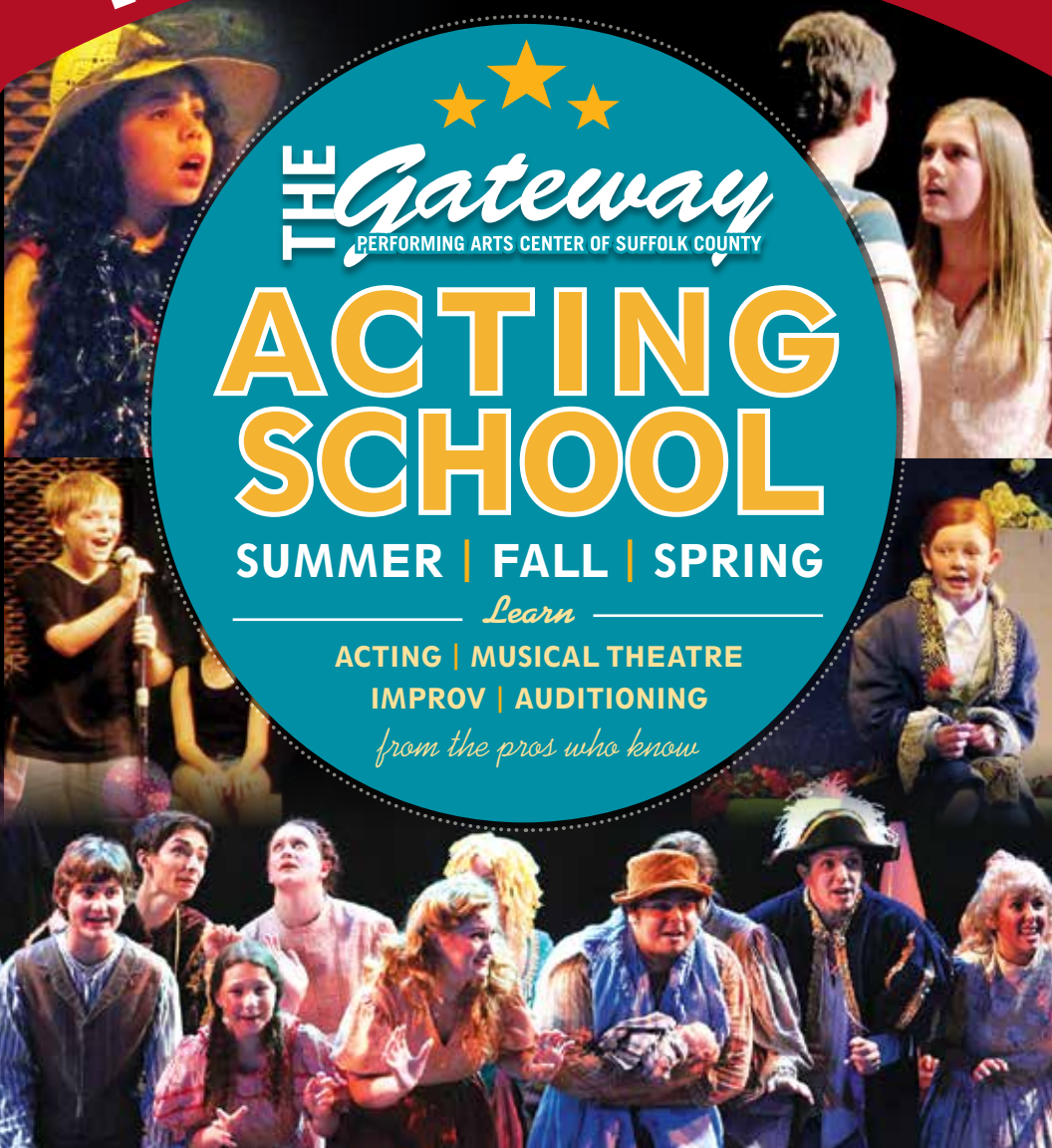
# ACTING SCHOOL

SUMMER | FALL | SPRING

*Learn*

ACTING | MUSICAL THEATRE  
IMPROV | AUDITIONING

*from the pros who know*



# PERFORMING ARTS CENTER OF SUFFOLK COUNTY

## BOARD OF DIRECTORS

Co-Chair .....Bob Durkin and Diane Giattino  
Vice-Chair ..... Ann L. Nowak

Secretary.....Gale Edwards  
Director.....Paul Allan

## ADMINISTRATIVE

Managing Producer..... Paul Allan  
Associate Producer..... Jeff Bellante  
Casting Director..... Michael Baker  
Company Manager..... Bethany Sortman  
Director of Development/  
Public Relations .....Scot Patrick Allan  
Casting Assistant..... Rachel Colson  
Asst. Company Manager..... Corinne Jacob  
HR/Contracts Coordinator.....Ada Graham  
Guest Services/  
Quality Assurance Manager ..... Jane Hayes

## ARTISTIC STAFF

Director/Choreographer ..... Keith Andrews  
Music Director .....Andrew Austin  
Associate Director .....Michael Minarik  
Assistant Choreographer.....Vincent Ortega  
Lighting Designer ..... Chris Landi  
Scenic Coordinator ..... Rev. Jose Santiago  
Wig and Makeup Designer .....Gregory Gale  
Sound Designer ..... Don Hanna  
Assistant Lighting Designer..... Abby Wells  
Musical Contractor ..... Jeff Hoffman  
Production Photographer ..... Jeff Bellante  
Season Understudies .....Scot Patrick Alan  
Michael Baker

## FACILITIES

Concessions and  
Hospitality Manager.....Blake Armitstead  
Cleaning Staff.....Jasper Bailey  
House Staff ..... Tim Cole, James Gibney  
Lauren Hersh, Ryan Koerber, Joe Kraus  
Kaitlyn LaGrega, Danny Lebenns, Dominic Mond  
Emily Nelson, Alex Pardo, Cooper Pardo  
Grounds Maintenance.. HTM Landscaping Company  
General Counsel .....Ann L. Nowak

## EDUCATION

Acting School Director.....Michael Baker  
Teaching Staff.....Rachel Colson, Bethany Dellapolla  
Brooke Turner, Amy Woschnik  
Accompanists ..... Christy Weiler, Peter Pece

## PRODUCTION

Production Manager..... Brian Loesch  
Production Stage Manager..... Suzanne Apicella  
Technical Director..... John Sabo  
Rentals Manager/Assistant  
Production Manager..... Anthony Tombasco  
Sound Engineer ..... Don Hanna  
Wardrobe/Wig Supervisor..... Trent Pcenicni  
Master Electrician..... Liz Marquis  
Props Master .....Mitch Domer  
Scenic Artist..... Roxeanne Miftahittin  
Asst Master Electrician.....Matthew McKone  
Asst Stage Manager .....Sara Sharos  
Asst Wardrobe Supervisor..... Lily Parker  
Props Assistant..... Ivy Thomas  
Wardrobe Crew Chief ..... Amber Mallon  
Staff Electrician ..... Sam Callery  
Sound Assistant..... Sam Silva  
Carpenters.....Kara Burkhart, Graham Caulfield  
Stephen Dunham, Matt McKenna, Blair Rath

## APPRENTICES

Stage Management Apprentice..... Kaitlyn Driesen  
Electrics Apprentices .....Brian McMullen  
Alex McPherson  
Carpentry Apprentices .....Riley Lescault  
Aaron Collins  
Wardrobe Apprentice ..... Jenna Kay Light

## INTERNS

Stage Management Intern..... Eric Mattingly  
Sound Intern.....Thomas Brush  
Carpentry Interns . Joe Crumlish, Sandra Paige Davis  
Wardrobe Intern .....Loren Spencer  
Wig and Makeup Intern.....Kenny Eng

## BOX OFFICE

Box Office Manager..... Laurie Cole  
House Manager ..... Joanne Famiglietti  
Asst. House Manager ..... Beth Harrison  
Box Office Staff ..... Janet Caponi, Rachele Izard  
Joe Varsalona

**NOTICE ABOUT PARKING:** We strongly encourage our patrons to always park on Gateway grounds. Parking is not allowed on Maplewood Drive north of the back Gateway exit. Parking is also prohibited on the east side of the street (Gateway side). Observe the No Parking signs. The Village of Bellport has advised us that cars parked in these areas will be ticketed. Please park on the west side of the street, opposite the Gateway fence, between the back exit and South Country Road. We appreciate your cooperation in making your visit to Gateway as pleasant as possible.



# CONTRIBUTE TO THE FUTURE OF THE ARTS

We invite you to lend your support and become a bigger part of our performing arts family.

★ **STAR BILLING** ★

**\$5,000**

★ **DIRECTORS CIRCLE** ★

**\$2,500**

★ **FRONT ROW VIP** ★

**\$1,000**

★ **BACKSTAGE PASS** ★

**\$500**

★ **CAST MEMBER** ★

**\$250**

★ **STAGE HAND** ★

**\$100**

★ **FAN CLUB** ★

**\$50**

GO TO [PACSC.ORG/ONLINE/DONATE](http://PACSC.ORG/ONLINE/DONATE) OR CALL (631) 286-7027 FOR MORE INFORMATION

## 2015 SEASON SPONSORS

AARP  
The Manhattan Club  
Sunrise Toyota

## STAR BILLING

AARP  
County of Suffolk  
Timothy Kana  
The Knapp-Swezey  
Foundation  
New York State  
Council on the Arts

## DIRECTOR'S CIRCLE

Steve and Kate  
Browning  
HSBC  
Nancy Hollander and  
Ken Sunshine  
Tom and Pamela  
Lerner  
Francis and Virginia  
Palamara

## FRONT ROW VIP

Catherine Ann  
Conneally  
Cheryl A. Felice  
Teresa Fiori  
MVP Automotive  
Titus Kana  
Wm J. O'Neill  
Exchange Co., Inc

## BACKSTAGE PASS

Bellport Chamber of  
Commerce  
Estella and Robert  
Clasen  
Thomas Connelly  
John Shea Jr. and  
Diane Crean  
Raymond and  
Therese Ebarb  
Mayor Ray and  
Debbie Fell  
Thomas Gavin  
James and Diane  
Giattino  
Frank and Diane Lento  
Roe Agency

James Martinsen and  
Robin Stevens  
Lawrence and Leticia  
Minei  
John Moter and Jane  
Graham  
Michael and Hwasoon  
Mullaney  
Phylis Natoli and  
Debbie Ann Chang  
Bill and Monica  
Rignola  
Dorry Tooker  
Frank and Marie  
Trotta  
Joseph and Patricia  
Van De Wetering

## CAST MEMBER

Teresa Abramowski  
Meredith Bain and  
Eugene Nifenecker  
Susan Belcher  
Helen Budny  
Wayne Buess  
Linda Carr Relethford  
Fran Cirillo  
Thomas and Sara Jane  
Corwin  
Kathy and Tom Cullen  
Mary Jane and Brian  
Cullen  
Gloria Cummings  
Susan DiBernardo  
Kenneth and Tamara  
Fehling  
Anna Lou Fletcher  
Francis and Lorraine  
Fosmire  
Joseph Franco  
Ed Graziano and Doug  
Carabe  
Chris and Laura Hane  
Alfred and Eleanor  
Hobbs  
Judith Hope  
Susan Kahl and Jim  
Vaughan  
Joan & Irwin Kirtman  
Vincent and Linda  
Leuzzi  
Ann Marie and  
Gary Loesch

Jane Love  
Margie Ludewig  
Joseph and Ellen  
Masterson  
Lisa and George  
Meyer-Fertal  
Giovanni Naso and  
Brian Oper  
Robert and Kathe  
Palermo  
Richard and Maria  
Pierce  
Patrick and Katarina  
Preux  
Robert and Ann  
Quinn  
Alonzo and  
Margaret Rand  
Bob and Pamela  
Rosenberg  
Eric and Barbara Russo  
Judith Steinberg  
Richard and Mary  
Giattino-Styles  
Janet Taylor  
Bruce Tooker  
Patricia A. Trainor and  
Taylor O. Alonso  
John and Lorelei  
Tuthill  
Carolyn &  
Francis G. Walsh  
Peter Williams

## STAGE HAND

Kent and Connie Adee  
Evelyn Bergen  
Fred and Janet Braun  
Elaine and Irwin  
Cooper  
Alicia Demonte  
Joseph and  
Margaret Doran  
Marjorie Feehey  
Ruth Flynn  
Steve and Marge Frost  
Jack Moter and  
Jane Graham  
Marilyn Hamilton and  
Joseph LaGennusa  
Timothy and Laura  
Hawryluk  
Richard Hoshino

Janice Klein  
Arnie and Elizabeth  
Lizan  
Richard and Janet  
Loehr  
Dennis Miller  
John T. Morris  
Tom and April Murray  
Karen Palacino  
Jeanette Paolillo  
Dennis and  
Sharon Pape  
Scott Pask  
Joseph Policano  
Sandy Reifel  
Stanley Resnick  
Dianne and Peter  
Romano  
Donald and Iva  
Sheehan  
James and Patricia  
Sikorski  
Laura Soper  
Donald Steckler  
Mr. Lawrence J.  
Strickland  
David Tobachnik  
Ms Janice Wargelin  
Allen Welcome  
Cynthia and Robert  
Wellins  
Edward and  
Jane-Marie Wright  
Kathy Zankel

## FAN CLUB

Leonard and  
Eileen Astrin  
Mr. & Mrs. Jeff  
Bellante  
Richard and Evelyn  
Brody  
June Cardenas  
Edward & Margaret  
Dankievitch  
Kathie Davis  
Ms. Donna Devine  
Doris Devoti  
Cheryl Dippel  
Wendy and Roy  
Erlanson  
Robert and  
Patricia Falco

Carl Goodwin  
Ron and Evonne  
Hammond  
Robert Hawkins  
Dan Haynes  
Jean Heblch  
Maureen and PK  
Hopkins  
David and Peggy  
Kulakowski  
Mrs. Linda  
Lane-Weber  
Joyce and Leonard  
Lang  
Ann Lucas  
Kevin and Joy O'Brien  
Susan and Michael  
O'Grady  
Ray and Fran Ormand  
Ray and Helga Pirozzi  
Henry and Sonia  
Rotella  
Ray Schiemel  
Annmarie & Fred  
Schiller  
Andrew and  
Jennifer Setzer  
Diana Seuringer  
Joseph and  
Germaine Skelly  
Mary Ellen Smith  
Christine Squitieri  
Donald and Ann  
Stonebridge  
Denise and Richard  
Strothman  
Patricia Tarasenko  
Susan Thorstenn  
Nancy Vaillancourt  
Irwin and Susan Wein  
Genie and Carol  
Weisman  
Barbara Wright  
William and Janet  
Wrobleski  
Janet Young  
Gary and Diane  
Zanazzi  
S. Paul and Ingrid Zola

*\*Listed names reflect  
2015 FY donations*

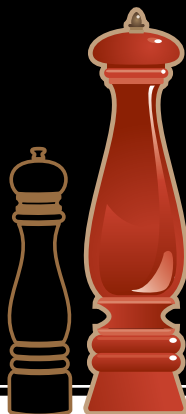
The Performing Arts Center of Suffolk County is a 501(c)3 non-profit organization – all donations are 100% tax-deductible. Thank you for your contribution to the future of the arts!

To adjust the way your name is listed here, please email [Scot@gatewayplayhouse.org](mailto:Scot@gatewayplayhouse.org).

# Peppercorn

OPEN  
7 DAYS  
LUNCH &  
DINNER  
11AM

*Cafe*  
*American Cuisine*



## HAPPY HOUR 4-6 P.M.

*Half Priced Drinks at the Bar*

KITCHEN IS OPEN UNTIL 10 P.M.  
Sunday-Thursday, 11 P.M. Friday & Saturday

LIVE *Music*

Tuesday, Thursday, Friday, Saturday,  
Sunday 7 – 11 P.M.



**SUNDAY &  
MONDAY**

*Crab Dinner*

**\$15**

**TUESDAY**

*NY Shell Steak Dinner*

**\$18**

**WEDNESDAY**

*Prime Rib Dinner*

**\$18**

Centrally located between the Gateway Playhouse and Patchogue Theater. Outdoor dining

**668 SOUTH COUNTRY ROAD, EAST PATCHOGUE**

[thepeppercorncafe.com](http://thepeppercorncafe.com) • 631-438-0661

**\$10 OFF CHECK OF  
\$50 OR MORE**

**\$20 OFF CHECK OF  
\$100 OR MORE**

WITH THIS COUPON. MUST PRESENT COUPON. NOT TO BE COMBINED WITH OTHER OFFERS.



Building a successful business takes more than passion.



It takes a strong financial partner.

As one of the top community banks in New York,\* BNB has been passionate about helping Long Island businesses succeed for more than 100 years.

See the difference our passion can make to your business' success.

Start your relationship today.

Call **James Manseau**, Chief Retail Banking Officer,  
at 631.537.1000 Ext. 7300.

\*Ranking from April 28, 2014 American Banker Magazine.



Branches in Suffolk and Nassau Counties | Lending Offices in Riverhead and Manhattan  
631.537.1000 | [www.bridgenb.com](http://www.bridgenb.com)



### Ford Fusion

22 City/34 Hwy/ 26 Combined

### Ford Escape

23 City/32 Hwy/ 28 Combined

# \$15 off

Any service for all makes and models

Must present coupon at time of write up. No two offers or specials can be combined. One coupon per repair. Exp. 12/31/2015

# \$250 off

Any new or pre-owned vehicle purchase

Must present coupon at time of write up. No two offers or specials can be combined. One coupon per household. Exp 12/31/2015

## Get More for your Trade In! Up to \$1,000 Trade Assistance Voucher Available\*

\* May only be used towards the purchase of new or preowned vehicles. Limit 1 per household.



5686 SUNRISE HWY EXIT 50 • SAYVILLE, NY

631.589.4800  
SAYVILLEFORD.COM

FOLLOW US ON

